

**Transcon's 10th annual
Simmental**



COW-A-RAMA

Offering over 200 head

Saturday, 11:00 a.m.

NOVEMBER 21, 2009

Innisfail Auction Mart, Innisfail, AB

Sales Management Comments

Welcome to the 10th edition of Cow-A-Rama, the only ANNUAL sale in the Simmental breed that allows both registered & commercial breeders to compete at a buying level like a one-shot dispersal would offer. The reputation of quality combined with affordability is uniquely done year after year. Next to The National Trust this event has the most inquiries each year. The labor friendly mini-productions have concentered a tangible factor to the consistency of the annual element. The following biographies will explain the components of the 10th annual Cow-A-Rama.

The Sevcik family of Hussar, Alberta are well known for their friendly demeanor and self less nature. For labor reasons and a few unfortunate injuries combined, the workload must be decreased. This herd that was established in 1970 has been advertised as a mature cowherd dispersal but is more accurately an "in-the-prime-of-their-life" dispersal and will include all (except for a predetermined group that were culled) of the L,M,N,P, & R born cows. Within these are many notable cows with proven track records having placed progeny into such sales as the illustrious Red & Black. Top cows to look for in this hard working group are the Black Perfector daughter purchased from Ron Burgemeister; the dam of "Big Red", former herdsire for Yellow Rose now owned by Bar CL Simmentals; a red "Keepsake" purchased from Lewis Farms; and a Full Figures daughter originating from Ultra Livestock. The "SSP" cattle have developed a reputation over the years as great investments that have always rewarded their new owners.

Alberta's Highway 22 is signed all along it's route as "The Cowboy Trail" and it is ranches like the Kelley's Twin Anchor 7 that exist along the province's western most main highway that give it this name. Rodeo careers and ranching encompass the lifestyles at the Twin Anchor 7 that is a beautiful working ranch along both banks of the James River. This herd has the advantage of never being campaigned excessively to the public, therefore have been sorted in or out of the herd for reasons to create bulls for their commercial rancher counterparts. All in all, great feet, great udders, and productive with no purebred "hang-ups". They will retain all their heifer calves and bred heifers to continue on in the Simmental business, only cows owned by the kids and a few "golden oldies" will be kept, thus creating a bred cow dispersal for Guy & Christina. The devastating hailstorm on the August long weekend wiped out their winter feed supplies bringing on the sale of these cows.

The origin to the powerhouse Skor Simmentals herd is the breed foundation herd of Graf's Nu-Horizon Simmentals. The Graf cows have been quietly operating on a share basis at Skor's, but analyzing their past bull sale catalogs many of the top bulls still loyally bear the historic NUH prefix. Not only were the Graf family breed pioneers, the late Alex & Jean Graf were GIANTS as advocates for the YCS and gave many young breeders of the era (including Tracy) their start and reason for being in the Simmental breed. Skor Simmentals would be a good example, ask Terry, Debbie or Dale about Alex, a bad word won't be heard, but overwhelming admiration and appreciation for the guidance offered to launch them. As the Skor cowherd now numbers in the 300 range combined with Tracy Graf's other business commitments, this nucleus of "bull-makers" will be sold.

Absolutely, undoubtedly, one of the greatest names in the Simmental business ever is Virginia Ranch. This will be their 3rd consecutive mini-production sale at Cow-A-Rama and like the first two, the only Red Simmi bred heifers to sell anywhere this fall will be here. A year ago, the "Marciano" daughters were sold at National Trust and Calgary Round Up. There are

less of them available this year, so attach the "Lobos" to them and you have the "sire code sort" for the Virginia Ranch sale heifers for 2009. Incidentally the "Champ's Romano" daughters will all be sold at National Trust and Fleckvieh Equation exclusively. Confused? In a nutshell, all the Red Purebreds sell here and the Fleckviehs are sorted according to their respective sires assuring quality "lead off" heifers every time they hit a sale ring. Virginia Ranch's high seller a year ago (including National Trust), was in the Cow-A-Rama string.

Way up north, hails Moose Creek Simmentals and their 2nd appearance as a mini-production sale at Cow-A-Rama. This herd's design has an intentionally methodical genetic make-up, that shows forward motion every year. They have established a successful bull market in the Peace regions of B.C. and Alberta through the basics of customer service and quality product. I know in my travels this summer (not to mention Glenn's), I selected two head that came in dam from Moose Creek heifers that sold in their mini-production here a year ago (one heifer calf for National Trust and one bull calf for Simmsational). Summary: they raise good cattle that return for their customers!

Janzen Ranches gained access to an additional grazing reserve this year and as the old cowboy adage is, "never turn pasture down". Therefore most of their bred heifers were sent to a community range except a few top ones specifically to be sold here (less one at National Trust for promo opportunity). I saw most of the heifers this summer that they sold last fall and their new owners all had the same question, "Are Janzen's selling more heifers at Cow-A-Rama?". This is why they asked: one has a heifer calf selling at the Southern Alberta Simmental Round Up for Parview, three others have heifer calves going to the replacement pen at Nielsen Farms, and another has a bull calf that Blue will sell in the 2010 LaBatte Bull Sale. How about those testimonials?

The core of Czech-Mate's replacement bred heifer pen is a feature at this special 10th edition of Cow-A-Rama. Much like the sorting philosophy for the Virginia Ranch heifers, sires of the heifers were used to allocate them through different sales. 2 out of 3 "Red Labels" sell here, the other one sells ahead of these at National Trust. The only daughters of "Icon" and "Herc" sell here and because there is only one "Top Gun", she got the nod to go to Ultimate Red & Black with her red heifer calf sister, who is the best red heifer calf Czech-Mate will sell this year. These heifers carry the exciting new services of Semex's "King Arthur" and the reigning Olds Fair Supreme Champion, "General Lee".

As it's always been, you may use our free order-buying services in the event you cannot personally attend. Call any of our cell phones listed for an experienced appraisal.

See you November 21,

Jay Good



email: transcon@transconlivestock.com
www.transconlivestock.com

Transcon Livestock Corp.

403/938-6680 Fax: 403/206-7786
Box 700, Okotoks, AB T1S 1A8
JK cell: 403/566-5283 BW cell: 403/540-3094
GN cell: 780/542-0634

Cow-A-Rama consignors

Sevcik Simmental Ranch 1 - 84

Marvin & Donna Sevcik & family
Box 182, Hussar, AB T0J 1S0
Phone: 403 787-2292 Fax: 403 787-2294
Russell cell: 403 934-0960
email: rpslive1@telus.net

Twin Anchor 7 Simmentals 100 - 151

Guy, Christina, Taylor & Tanner Kelley
RR 1, Site 20, Box 7, Sundre, AB T0M 1X0
403 638-3063 Cell: 403 638-6740
twinanc7@davincibb.net

Graf's Nu-Horizon Simmentals 160 - 192

Tracy Graf
contact
Terry & Debbie Skoretz 780 384-2189 cell: 780 385-2027
email: skors@telus.net

Virginia Ranch 200 - 211

Harry & Michelle Satchwell
Box 47, Cremona, AB T0M 0R0
403/637-2587 cell: 403/818-4205
email: virginiaranch@xplornet.com

Moose Creek Simmentals 215 - 224

Don, Joyce & Shon Smith
Box 47, Gordondale, AB T0H 1V0
Phone (780) 353-2284
email: mosecrk@telusplanet.net

Czech-Mate Livestock 226 - 232

Jim, Gwen & Andrea Smith
Box 651, Carstairs, AB T0M 0N0
403 337-2997 cell: 403 818-3106
email: czech@xplornet.com website: czech-matelivestock.com

Janzen Ranches 235 - 240

Matt & Andrew Janzen
Box 32, Rosemary, AB T0J 2W0
403 378-3788 Matt 403 378-4690 Andrew
Fax: 403 378-3792
email: mjanzen@eidnet.org

Transcon's Simmental

Cow-A-Rama X

Saturday, 11:00 a.m.

NOVEMBER 21, 2009

Innisfail Auction Mart, Innisfail, AB

OFFERING 224 HEAD

70 Fleckvieh Fullblood bred females
121 Red bred females 22 Black bred females
11 Red open heifers

Auctioneer:
Don Oberg

Special Representatives:
Robert Lind Ryan Dorran Ben Wright
Danny Daines Grant Daines

Sale day phones:
Transcon cells:
Jay Good 403/556-5563 Bob Wilson 403/540-3084
Glenn Norton 780/542-0634
Innisfail Auction Mart 403/227-3166

Sale Headquarters
R&R Inn, Innisfail 403/227-2214
Highwayman Motor Inn, Innisfail 403/227-6001

Innisfail Auction Mart cafeteria will be open.

For further information contact any of The Transcon Team



Heather James
403/938-6680



Jay Good
403/556-5563



Bob Wilson
403/540-3084



Glenn Norton
780 542-0634



Bob James
403/938-8145



Shellaine Kientz
403/938-6680

Sevcik Simmental Ranch

Sevcik Simmental Ranch

Marvin & Donna Sevcik & family
 Box 182, Hussar, AB T0J 1S0
 Phone: 403 787-2292 Fax: 403 787-2294
 Russell cell: 403 934-0960

Welcome!

This is your special personal invitation to be with our family on November 21st.

This past year or so we have had some mishaps and health issues. With Marvin and I as the sole work force, the work load needs to be managed.

Sale day you will be bidding and buying ranch raised, no frills cows that work hard and play hard. The herd grazes 7 – 8 months of the year on mostly native pasture in the Wivterwiwa Hills and stubble fields on dropped straw swaths.

If you require any assistance or have questions about the cows, feel free to give the Transcon crew or myself a call.

See you in Innisfail.

Russell P. Sevcik

A special thanks to all our family, neighbors and friends for assisting us in the past year.



REFERENCE SIRE

REMINGTON INTIMIDATOR 82S

BLACK POLLED PUREBRED MALE
 BPTG672989 RCCI 82S 24 June 2006

GW LUCKY BREAK 047G	LCHMAN LUCKY BUCK 7049C
JDJ INTIMIDATOR 080K BPTG636673	GW MISS 600U 1351C
WSS BELLE 615F	GW TAILOR MADE 515A
	RB MAXINE 106A
TNT BLACK DAKOTA MADE E72	BLACK POLLED DAKOTA
GGL 313K BPG540054	TNT MISS TIZZY C57
GGL 412G	SPRING VALLEY E878
	ELTON MISS WRANGLER 9Y

BW: 96; 205 day: 629; 365 day: 1143.



REFERENCE SIRE

HSF CASHUS 62L

BLACK POLLED PUREBRED MALE
 BPTG622031 RPP 62L 25 August 2001

HERCULES 538P	ER CANADIAN 676L
BOZ REDCOAT SG319346	PHILLIPS POLLED CHARM
BOZ RED LADY	BOLD FUTURE
	MISS BIG SANDY U804
DS POLLFLECK 809	SIR ARNOLD 809G
HSF VANESSA 45D 1799587	DS MS URSRING 513S
MS HIGH BRED 53A	MEYERS BLACKTOP 206Y
	MS HIGH-BRED 20X



REFERENCE SIRE

PIONEER RED SENSATION 2T

POLLED PUREBRED MALE
 PG679589 PXP 2T 10 January 2007

STF STARQUEST N114	STF MONTANA BLACK KF25
TWIN-CHIEF RED NECK 247R PG647313	STF LEONA L260
TWIN-CHIEF LARAMIE 248L	CG HOMEBUILDER 803H
	TWIN-CHIEF HELEN 248H
RJY RED RESPECT 10F	ER BIG SKY 545B
AVH RED LICORICE 2L PG568650	S-BAR MS JASMINE 67D
TBSF JULIA 43J	TBSF ROBERT 20F
	TBSF GELSEY 15G

BW: 98; 205 day: 684; 365 day: 1239.

Sevcik Simmental Ranch



REFERENCE SIRE

MI PLAYBOY 3P

SCURRED PUREBRED MALE
SG624952

MJIS 3P

10 January 2004

PPSR ARMAGEDDON 25J
PPSR FIREBALL 66M PG608831
MISS PRICKLY PEAR H815

MR SHAWACRES RED RAM 16J
MS MI LANA 1L G611989
MS HIGHWOOD 26B

LRS PREFERRED STOCK 370C
MISS PRICKLY PEAR 263B
PPSR MONTANA IRISH 107D
MISS PRICKLY PEAR 547E
BBS ZIMA D55
MISS SHAWACRES IMPACT 4G
SIR HLC JR 20W
MISS HIGHWOOD 01M

BW: 100; 205 day: 754.



REFERENCE SIRE

CALICO RED 818U

POLLED PUREBRED MALE
PG704068

XCAL 818U

21 January 2008

JF NEW DIMENSION 903J
LAZY S RED 236M PG585449
MS LAZY S RED P 87H

LRS RED REALITY 33J
CALICO RED GABRIEL 314N PG629385
CALICO GABBY 127L

NLC 64Y TOMCAT
NICHOLS KELLY 75U
PPSR FIREPOWER 57F
MS LAZY S 199F
PPSR COAL BLACK 65F
LRS MS PREFD STOCK 715G
MR DD&E THE GANGSTER 3G
CALICO COLETTE 930J

BW: 97.



REFERENCE SIRE

PRAIRIE WIND RITZ 16U

BLACK POLLED PUREBRED MALE
BPG704445

JGM 16U

19 February 2008

BH LIMITED BLACK 015K
KWA LIMITED 71P BPG628110
BBN MS BLACK FIGURES 14K

R PLUS 2072M
PRAIRIE WIND 96S PG674734
PRAIRIE WIND 15M

SAC MR MT 73G
BH BUTTERFLY KISSES 735G
3C FULL FIGURES C288 BLK
WFL BLACK LADY 505H
LFE MR LEWIS 376J
MISS R PLUS 927J
PRAIRIE WIND COPYCAT 17K
PRAIRIE WIND 40K

BW: 90.

1. SSP LUNA 102L

POLLED PUREBRED FEMALE
PG565958

SSP 102L

1 January 2001

GW-CPL RED ALERT
ER RED DASH 649D PTC390665
ER MISS REDLINE 40B

SU DIPLOMAT 159D
SUN STAR MS CAN WEST 38F G363136
SUN STAR MISS T 3Y

LEACHMAN RED BALDY 438W
CPL MS MONTANA 216Y
ER BLACK MACK 568Y
ER MISS HERC 79U
SIM-ROC CANADIAN WEST
MS RED GOSEBERY 158X
LWC 2W
RIVERGLEN LAURETTE

BW: 55; 205 day: 559; 365 day: 858.

Exposed to Pioneer Red Sensation 2T -PG679589- May 7 to Aug 20/09.

Daughters at Morton's, Outlaw and Southpaw. A son at Sandiland's, Millarville, AB. A good bull calf by Pioneer Red Sensation 2T (PXP 2T) this year.

2. RPP MS SHUTOUT 114L

SCURRED PUREBRED FEMALE
SG565995

RPP 114L

22 January 2001

WHF RED ROOKIE 160E
CZAR MR SHUTOUT 20J PG521889
MISS PARKHILL 22A

MR WRS WINNER 57A
RPP LADY LUCK 96E 367709
J ANCHOR 18A

DS BLACK ZINGER 141B
BDV RUBY C60
PARKHILL TONIUS
MISS PARKHILL 2U
CSR BOLD WINNER 110W
BAR 5 MS BIGSKY1464W
J ANCHOR TRAMP 10T
J ANCHOR 16W

BW: 90; 205 day: 680; 365 day: 1000.

Exposed to Pioneer Red Sensation 2T -PG679589- May 7 to Aug 20/09.

A daughter in the herd. A top PXP 2T heifer calf this year.

Sevcik Simmental Ranch



3. DTD MS SEIGE 147L

POLLED PUREBRED FEMALE
PG565988

DTD 147L

11 February 2001

GW-CPL RED ALERT
STF RED SEIGE PTG399266
ER HERC 58Y

LEACHMAN RED BALDY 438W
CPL MS MONTANA 216Y
HERCULES 538P
ER 222M
BAR 5 CROWN ROYAL 419W
JRSF MISS AWESUM 007U
ALTA HORN 8X
SSP MISS DESTINY 9P

KFL CROWN 48Z
DTD MARGO 622C G297711
DTD SWEET PEA 370Z

BW: 95; 205 day: 690; 365 day: 1004.

Exposed to Pioneer Red Sensation 2T -PG679589- May 7 to Aug 20/09.

Daughters at Camden's, Timber Meadows and Twin Chief. All sold at Red & Black Sale. 2 daughters in the herd.



4. SSP DAWN 164L

POLLED FULLBLOOD FEMALE
P565976

SSP 164L

19 February 2001

GREAT GUNS KARL 17C
SSP EXAMINER 32E 344489
SSP CHANTILLY LACE 432A

BEL C&B WESTERN 2ND
MISS KNIGHT 155S
ALTA HORN 8X
KAYPANT 3T
WLSF GENESIS 430U
HY CROSS GAL 127P
MYALTA PARAGON 1J
RIVERGLEN GINGER

JRSF HEARTBEAT OF AMERICA
SSP DELTA DAWN 8D P301231
RIVERGLEN BELLE

BW: 97; 205 day: 716; 365 day: 1062.

Exposed to Pioneer Red Sensation 2T -PG679589- May 7 to Aug 20/09.

Dam of Virginia Ranches' Ricky Bobby bull. A daughter at Chalk Hills. 3 daughters in the herd. 1 daughter in the sale.



5. SSP RED SEIGE 187L

POLLED PUREBRED FEMALE
PG565982

SSP 187L

28 February 2001

GW-CPL RED ALERT
STF RED SEIGE PTG399266
ER HERC 58Y

LEACHMAN RED BALDY 438W
CPL MS MONTANA 216Y
HERCULES 538P
ER 222M
CHERAY AMAZE 23A
CHERAY BRENDA 14B
MR WRS WINNER 57A
SSP MISSENFORCER 104X

LBR AMAZE 13D
SSP MS AMAZE 133H 502079
SSP LADY WINNER 680C

BW: 88; 205 day: 586; 365 day: 878.

Exposed to Pioneer Red Sensation 2T -PG679589- May 7 to Aug 20/09.

A bull maker - 6 for 6. Bulls sold to very good ranches.



6. SSP MS SHUTOUT 206L

POLLED PUREBRED FEMALE
PG565983

SSP 206L

15 March 2001

WHF RED ROOKIE 160E
CZAR MR SHUTOUT 20J PG521889
MISS PARKHILL 22A

DS BLACK ZINGER 141B
BDV RUBY C60
PARKHILL TONIUS
MISS PARKHILL 2U
CSR MR SEGFRIED 176T
MISS KNIGHT 108N
BAR 5 BOTTOMLINE 374C
SSP MISS ZOAR 654C

KNIGHT STINGER 207Y
SSP MS STINGER 16J G526432
SSP MS BOTTOM LINE 10G

BW: 97; 205 day: 662; 961.

Exposed to Pioneer Red Sensation 2T -PG679589- May 7 to Aug 20/09.

3 daughters in the herd.

Sevcik Simmental Ranch



7. KAPPES REFLECTION L436

POLLED PUREBRED FEMALE

PG623730

DEZ 436L

10 May 2001

COPPER BLACK S72
KAPPES BLACK REFLECTION 1856765
MISS PRICKLY PEAR 426S

BLACK POLLED DAKOTA
KAPPES LADY DAKOTA D59 1795602
KAPPES Y42

PERFORMER
BLACK QUEEN
LANDRIDGE JET BLACK
MISS PRICKLY PEAR 212P
KOEPLIN RANCH 736
MEYER RANCH 427
DDC BLACK SHADOW
KS GAL W22

Exposed to Remington Intimidator 82S -BPTG672989- May 20 to July 15/09 and also exposed to Prairie Wind Ritz 16U -BPG704445- July 16 to Aug 20/09.
A bull to Carr Farms last year.

10. RPP MS KENNY 14M

POLLED PUREBRED FEMALE

PG606537

RPP 14M

24 January 2002

BAR 15 MESCALERO 109H
BFPS KENNY 22K PG532300
GFP EMOTIONAL GIRL 19H

DATAMAN GABI 214B
RPP JEWEL 40E PG367708
T2 JEWEL 66X

ER MACKFRID 550B
NLC BEEBA B22
WHF RED DOC 940E
GFP MISS RED PRECIOUS 8F
DEK DATAMAN 114W
PIONEER GABI
BAR 5 REDMAN 407S
MS KFL SS 83S

BW: 88; 205 day: 613; 365 day: 1044.

Exposed to MI Playboy 3P -SG624952- May 20 to Aug 20/09.

2 daughters in the herd and a daughter sold to KMR Ranches at Red & Black.

11. CSS MS RED 16M

SCURRED PUREBRED FEMALE

SG606538

CSS 16M

26 January 2002

LANDRIDGE JET BLACK
BTS REDWOOD G705 PTG528069
ER MISS HERC 91X

IPU RED BODACIOUS 104H
CSS MISS RED BO 113K PG540221
M&S MISS MAHOGANY 6A

SINGLETREE SMOKE
LANDRIDGE ONYX 261K
HERCULES 538P
ER 239M
FF BODACIOUS B900
CIRCLE S 7U
MAHOGANY RED 82X
EDN MISS 70N

BW: 82; 205 day: 622; 365 day: 1045.

Exposed to MI Playboy 3P -SG624952- May 20 to Aug 20/09.

Dam is CSS 113K. Has a daughter in the herd.

8. TWIN-CHIEF LUSCIOUS 484L

POLLED PUREBRED FEMALE

PG557821

BZL 484L

27 January 2001

ER RED DASH 649D
TWIN-CHIEF HEATSEEKER 2H PG414684
TWIN-CHIEF FLORENCE 20F

EAGLE-RIDGE DUCE 28D
TWIN-CHIEF GEM 484G G411558
TWIN-CHIEF DOLL 484D

GW-CPL RED ALERT
ER MISS REDLINE 40B
LORR DURA-BULL 1D
TCS BREANNE 2B
SIM-ROC STROLLER
MISS EAGLE-RIDGE 5W
3C PASQUE 8773
COULEE CREST 48Y

BW: 103; 205 day: 753.

Exposed to Pioneer Red Sensation 2T -PG679589- May 7 to Aug 20/09.

Sons at Berwest and Flewelling Livestock. Daughter in the sale.

9. SSP MS RED 8M

POLLED PUREBRED FEMALE

PG606534

SSP 8M

18 February 2002

LANDRIDGE JET BLACK
BTS REDWOOD G705 PTG528069
ER MISS HERC 91X

CFR MR CURTIS 73G
SUN STAR KALI 31K PG534856
SUN STAR MS ELNINO 12E

SINGLETREE SMOKE
LANDRIDGE ONYX 261K
HERCULES 538P
ER 239M
RED PEPPER
BAR 15 MS DAKOTA 43C
BAR 15 EL NINO 5B
SUNNY VALLEY SIG-GAL

BW: 68; 205 day: 626; 365 day: 1059.

Exposed to MI Playboy 3P -SG624952- May 20 to Aug 20/09.

Dam is SSSF 31K. Has a daughter in the herd.



12. ULTRA MISS FIGURES 28M

BLACK POLLED PUREBRED FEMALE

BPG574028

TC 28M

24 January 2002

EMMONS BLACK HERCULES
3C FULL FIGURES C288 BLK BPG500948
3C DANMARKA 0922 BLKZ

BDV POWER BALL 1D
ULTRA MISS POWER 85K BPG543094
OPPS BAXTER E71

LANDRIDGE JET BLACK
ER MISS HERC 118X
DLC DAN & MARK
3C CROCUS 7378 BWF
MEYERS BLACK POWER
BDV BLACK LADY Y32
TSR BAXTER C103
OPPS BLACK GOLDIE

BW: 75; 205 day: 542; 365 day: 828.

Exposed to Pioneer Red Sensation 2T -PG679589- May 7 to Aug 20/09.

A daughter in Gencor's donor program. A daughter in the herd and 2 sons at Vogstead Ranches.

Sevcik Simmental Ranch



13. Son sold in 2008 Red & Black SSP MS SHUTOUT 31M

POLLED PUREBRED FEMALE
PG606540 SSP 31M 1 January 2002

WHF RED ROOKIE 160E
CZAR MR SHUTOUT 20J PG521889
MISS PARKHILL 22A

KLONDIKE ARNIE GNM 250Z
SSP MS ARNIE 54H 502085
SSP PRINCESS 89D

DS BLACK ZINGER 141B
BDV RUBY C60
PARKHILL TONIUS
MISS PARKHILL 2U
SRF MR BIGFOOT S138
SIM-ROC GWEN
KFL CROWN 48Z
SSP LADY D D 66W

BW: 82; 205 day: 630; 365 day: 1062.

Exposed to Pioneer Red Sensation 2T -PG679589- May 7 to Aug 20/09.
3 sons working in commercial herds and a daughter in the herd.



14. KHX 32M

BLACK POLLED PUREBRED FEMALE
BPG581523 KHX 32M 22 February 2002

LRS PREFERRED STOCK 370C
ELLINGSON BLACK PERFECTOR BPG521862
ELLINGSON BLACKTOP F672

MEYERS BLK COALMINER 728
BDV BLACK AGATHA 81A BPG259139
BDV BLACK ROSE Y24

BW: 90; 205 day: 742; 365 day: 1099.



Exposed to Pioneer Red Sensation 2T -PG679589- May 7 to Aug 20/09.

All black pedigree. A super Cashus daughter at Twin Chief. 3 full sisters to her in the herd. She has an awesome bull calf by PXP 2T this year.



15. RPP MS CISCO 38M

BLACK POLLED 3/4 BLOOD SIMMENTAL FEMALE
BPRS606542 RPP 38M 4 February 2002

PTL POLLED STATS
ER BLACK CISCO 532C BPTG320649
ER MISS MAX 54Z

SSP GOT A GET SOME 8G
RPP BLACK GO GETTER 70K BR5540201
FN-ANAN ANGUS/ANGUS

BUCK
PTL MISS JETLINER S404
BLACK MAX
ER MISS REDLINE 63T
RDD CRIMSON TIDE 518D
SSP ETERNITY 2E

BW: 75; 205 day: 691; 365 day: 1136.

Exposed to Pioneer Red Sensation 2T -PG679589- May 7 to Aug 20/09.
Dam is RPP 70K. Has a daughter in the herd. A couple of bulls sold to good ranches.



SSP Eternity 2E & son SSP 8G

16. SSP MS X 49M

FULLBLOOD FEMALE
606545 SSP 49M 12 February 2002

GREAT GUNS KARL 17C
SSP EXAMINER 32E 344489
SSP CHANTILLY LACE 432A

SIR BAR 40 DEUCE
SSP LADY DEUCE 607C 297714
WSR MISS AMARILLA 18A

BEL C&B WESTERN 2ND
MISS KNIGHT 155S
ALTA HORN 8X
KAYPANT 3T
BAR 5 BIG RED 650S
MISS LEWIS 34R
WSR GENERAL 5S
WSR 9U

BW: 92; 205 day: 588; 365 day: 1017.

Exposed to Pioneer Red Sensation 2T -PG679589- May 7 to Aug 20/09.

Super cow family. Maternal sister to Eternity and Obsession. Has a good PXP 2T bull calf in the bull pen.

Sevcik Simmental Ranch



17. SSP MS SHUTOUT 67M

POLLED PUREBRED FEMALE TWIN
PG606552 SSP 67M 23 February 2002

WHF RED ROOKIE 160E
CZAR MR SHUTOUT 20J PG521889
MISS PARKHILL 22A

MR WRS WINNER 57A
SSP LADY LUCK 78H G502059
SSP MISS ANTONIUS 302Z

DS BLACK ZINGER 141B
BDV RUBY C60
PARKHILL TONIUS
MISS PARKHILL 2U
CSR BOLD WINNER 110W
BAR 5 MS BIGSKY1464W
ANTONIUS
SSP WRANGLER GAL 119X

BW: 67; 205 day: 598; 365 day: 1011.

Exposed to Pioneer Red Sensation 2T -PG679589- May 7 to May 20/09 and also exposed to NAC Timon 43T -BPG686016- May 21 to Aug 20/09.

Dam of Yellow Rose's Big Red bull. 1 daughter in the herd. Weaned off over 1400 lbs of twin bull calves this year.



SSP Big Red - son of Lot 17

18. SSP MS SHUTOUT 68M

POLLED PUREBRED FEMALE TWIN
PG606553 SSP 68M 23 February 2002

WHF RED ROOKIE 160E
CZAR MR SHUTOUT 20J PG521889
MISS PARKHILL 22A

MR WRS WINNER 57A
SSP LADY LUCK 78H G502059
SSP MISS ANTONIUS 302Z

DS BLACK ZINGER 141B
BDV RUBY C60
PARKHILL TONIUS
MISS PARKHILL 2U
CSR BOLD WINNER 110W
BAR 5 MS BIGSKY1464W
ANTONIUS
SSP WRANGLER GAL 119X

BW: 58; 205 day: 607; 365 day: 1062.

Exposed to Calico Red 810U -PG706000- May 20 to Aug 20/09.

Twin to SSP 67M. Sold 2 bulls commercially.

19. SSP MS BO 70M

POLLED PUREBRED FEMALE
PG606554 SSP 70M 25 February 2002

FF BODACIOUS B900
IPU RED BODACIOUS 104H PG416201
CIRCLE S 7U

KNIGHT STINGER 207Y
SSP MS STINGER 16J G526432
SSP MS BOTTOM LINE 10G

BLUE PRINT MCM 63X
MISS INCUMBENT 34Z
LANDRIDGE JET BLACK
CIRCLE S 22S
CSR MR SEGFRIED 176T
MISS KNIGHT 108N
BAR 5 BOTTOMLINE 374C
SSP MISS ZOAR 654C

BW: 84; 205 day: 662; 365 day: 995.

Exposed to MI Playboy 3P -SG624952- May 20 to Aug 20/09.

Has a daughter in the herd. Bull sold to a good ranch. Weaned off over 1300 lbs of twins this year.



20. SSP MS GRIT 73M

SCURRED FULLBLOOD FEMALE
S606555 SSP 73M 28 February 2002

PRL PORTERHOUSE REGENT
GRINALTA'S GRIDIRON 403J ST528840
GRINALTA'S POLLED FLECK

BEL WESTERN UNION 2ND
SSP LADY UNION 16K 539983
SSP HARMONY 12D

ROGANT
MS PRL NITE ANCHOR 087B
MUTIG
EDC POLL MAGNUM 1B
BEL WESTERN UNION 5Z
MOYGADDY JENNIFER
BAR 5 ADMINISTRATOR
SSP SWEET HARMONY 480A

BW: 115; 205 day: 735; 365 day: 1107.

Exposed to MI Playboy 3P -SG624952- May 20 to Aug 20/09.

2 daughters in the herd.

21. SSP MS KENNY 74M

SCURRED PUREBRED FEMALE
SG606556 SSP 74M 28 February 2002

BAR 15 MESCALERO 109H
BFPS KENNY 22K PG532300
GFP EMOTIONAL GIRL 19H

PIONEER WRANGLER
SSP EVIE 3E G368426
SSP MISS ROYAL 668C

ER MACKFRID 550B
NLC BEEBA B22
WHF RED DOC 940E
GFP MISS RED PRECIOUS 8F
DANUELI TOPPER 515T
DANUELI VERONI 529T
RDD MR ROYAL 02Z
SSP MISS ROCKER 48N

BW: 92; 205 day: 613; 365 day: 1026.

Exposed to MI Playboy 3P -SG624952- May 20 to Aug 20/09.

A daughter at High Country and 1 daughter in the herd.

Sevcik Simmental Ranch



22. SSP MS BO 76M

POLLED PUREBRED FEMALE
PG606557

SSP 76M

3 March 2002

FF BODACIOUS B900
IPU RED BODACIOUS 104H PG416201
CIRCLE S 7U

NUH WRANGLER 19T
SSP WRANGLER GAL 316Z RS232528
SSPMISS FROSTBITE35T

BLUE PRINT MCM 63X
MISS INCUMBENT 34Z
LANDRIDGE JET BLACK
CIRCLE S 22S
MR DUSTY DIGNIFIED 10P
MISS HSF FAME 74M
MR CEDAR RIDGE 9M
FN-SMXX SIMMENTAL/CROSSBRED

BW: 92; 205 day: 631; 365 day: 1081.

Exposed to MI Playboy 3P -SG624952- May 20 to Aug 20/09.
3 bulls sold commercially. 1 daughter in the herd.



23. DTD MS BO 78M

POLLED PUREBRED FEMALE
PG606558

DTD 78M

6 March 2002

FF BODACIOUS B900
IPU RED BODACIOUS 104H PG416201
CIRCLE S 7U

MR CAMP CASANOVA 17C
DTD MISS CASSY 129F G392019
SSP MISS DESTINY 9P

BLUE PRINT MCM 63X
MISS INCUMBENT 34Z
LANDRIDGE JET BLACK
CIRCLE S 22S
SIM-ROC PREMIER
BGS DIGNITY 29U
BAR 5 DESTINY 310K
SSP MISS PARI 13J

BW: 84; 205 day: 670; 365 day: 1069.

Exposed to MI Playboy 3P -SG624952- May 20 to Aug 20/09.
2 daughters in the sale.



24. SSP MS KINNY 98M

SCURRED PUREBRED FEMALE
SG606560

SSP 98M

13 March 2002

BAR 15 MESCALERO 109H
BFPS KENNY 22K PG532300
GFP EMOTIONAL GIRL 19H

MR ZSL NORTHERN LITE 7A
SSP MOONGLOW 344490
WSR MISS AMANDA 16A

ER MACKFRID 550B
NLC BEEBA B22
WHF RED DOC 940E
GFP MISS RED PRECIOUS 8F
SIR BAR 40 COMMANCHI
NUH CHANEL 2W
WSR GENERAL 5S
WSR TESSA 2T

BW: 89; 205 day: 630; 365 day: 1113.

Exposed to MI Playboy 3P -SG624952- May 20 to Aug 20/09.
2 daughters in the herd.

25. SSP MS SHUTOUT 84M

POLLED PUREBRED FEMALE
PG606559

SSP 84M

7 March 2002

WHF RED ROOKIE 160E
CZAR MR SHUTOUT 20J PG521889
MISS PARKHILL 22A

BAR 5 BOTTOMLINE 374C
SSP MS BOTTOM LINE 10G G388009
SSP MISS ZOAR 654C

DS BLACK ZINGER 141B
BDV RUBY C60
PARKHILL TONIUS
MISS PARKHILL 2U
BAR 5 MVP 402Y
LFE MISS LEWIS 33Y
CHERAY ZOAR 29Z
SSP MISS FROSTBITE 52S

BW: 87; 205 day: 634; 365 day: 1099.

Exposed to MI Playboy 3P -SG624952- May 20 to Aug 20/09.
A daughter in the sale and one in the herd.

26. SSP MS SHUTOUT 102M

POLLED PUREBRED FEMALE
PG606561

SSP 102M

16 March 2002

WHF RED ROOKIE 160E
CZAR MR SHUTOUT 20J PG521889
MISS PARKHILL 22A

SIR BAR 40 DEUCE
SSP DOUBLE DUECE 31F 387986
SSP MISS WOODY 338Z

DS BLACK ZINGER 141B
BDV RUBY C60
PARKHILL TONIUS
MISS PARKHILL 2U
BAR 5 BIG RED 650S
MISS LEWIS 34R
RIVERGLEN WOODY
FREPANELLA 7T

BW: 78; 205 day: 679; 365 day: 1084.

Exposed to BMD Black Ultra 1U -BPG692645- Apr 30 to June 1/09.

This cow lost her calf this year. Spent the summer at Outlaw Cattle Co; rescued a calf for Brad.

Sevcik Simmental Ranch

27. RPP MS BO 103M

POLLED PUREBRED FEMALE
PG606565

RPP 103M

16 March 2002

FF BODACIOUS B900
IPU RED BODACIOUS 104H PG416201
CIRCLE S 7U

BLUE PRINT MCM 63X
MISS INCUMBENT 34Z
LANDRIDGE JET BLACK
CIRCLE S 22S
SIM-ROC PREMIER
BGS DIGNITY 29U
DJK ELECT 26T
LAVENDARS STEPHY 16S

MR CAMP CASANOVA 17C
RPP CASSY 58F 387915
RPP TIFFANY 134X

BW: 91; 205 day: 694; 365 day: 1069.

Exposed to MI Playboy 3P -SG624952- May 20 to Aug 20/09.

A daughter in the herd. 2 bulls sold commercially.

28. SSP MS BO 112M

POLLED PUREBRED FEMALE
PG606562

SSP 112M

24 March 2002

FF BODACIOUS B900
IPU RED BODACIOUS 104H PG416201
CIRCLE S 7U

BLUE PRINT MCM 63X
MISS INCUMBENT 34Z
LANDRIDGE JET BLACK
CIRCLE S 22S
CSR BOLD WINNER 110W
BAR 5 MS BIGSKY1464W
DJK ELECT 26T
KAYPANT 3T

MR WRS WINNER 57A
SSP LADY LUCK 68H 502057
SSP LADY ELECT 224Y

BW: 95; 205 day: 725; 365 day: 1106.

Exposed to MI Playboy 3P -SG624952- May 20 to Aug 20/09.

A daughter in the herd. Has a nice MI Playboy 3P (MJIS 3P) daughter this year.

29. RPP MS RPP 118M

BLACK POLLED 1/2 BLOOD SIMMENTAL FEMALE
BPRS606563

RPP 118M

1 April 2002

BAR 15 MESCALERO 109H
BFPS KENNY 22K PG532300
GFP EMOTIONAL GIRL 19H

ER MACKFRID 550B
NLC BEEBA B22
WHF RED DOC 940E
GFP MISS RED PRECIOUS 8F

FN-ANAN ANGUS/ANGUS

BW: 71; 205 day: 647; 365 day: 1146.

Exposed to Pioneer Red Sensation 2T -PG679589- May 7 to May 20/09 and also exposed to NAC Timon 43T -BPG686016- May 21 to Aug 20/09.

2 daughters in the herd. Raised a good 4-H steer for my good neighbor, Austin in his first year of 4-H.

30. SSP MS BO 120M

SCURRED PUREBRED FEMALE
SG610902

SSP 120M

1 April 2002

FF BODACIOUS B900
IPU RED BODACIOUS 104H PG416201
CIRCLE S 7U

BLUE PRINT MCM 63X
MISS INCUMBENT 34Z
LANDRIDGE JET BLACK
CIRCLE S 22S
PIONEER WRANGLER
PIONEER MS E BEST23X
NUH WRANGLER 19T
SSPMISS FROSTBITE35T

FMW WRANGLER BEST 100B
SSP FIRST LADY 91E G367745
SSP WRANGLER GAL 316Z

BW: 81; 205 day: 637; 365 day: 1099.

Exposed to MI Playboy 3P -SG624952- May 20 to Aug 20/09.

A daughter in the bred heifer pen.



31. SSP MS SHUTOUT 122M

POLLED PUREBRED FEMALE
PG606564

SSP 122M

6 April 2002

WHF RED ROOKIE 160E
CZAR MR SHUTOUT 20J PG521889
MISS PARKHILL 22A

DS BLACK ZINGER 141B
BDV RUBY C60
PARKHILL TONIUS
MISS PARKHILL 2U
BAR 5 CROWN ROYAL 419W
BAR 5 MS BEST 421S
ROCKER 7N EXTRA LAD
KJK MISS ACAJOU 03H

RDD MR ROYAL 02Z
SSP MISS ROYAL 668C G297742
SSP MISS ROCKER 48N

BW: 85; 205 day: 708; 365 day: 1188.

Exposed to MI Playboy 3P -SG624952- May 20 to Aug 20/09.

Dam of the champion steer at the local 4-H show. A MJIS 3P son who gained 3.98 lbs a day over 35 other steers.



32. LFE KEEPSAKE 158M

POLLED PUREBRED FEMALE
PG602240

LFE 158M

23 January 2002

PTL POLLED STATS
ER BLACK CISCO 532C BPTG320649
ER MISS MAX 54Z

LRS BIG COUNTRY 37E
SSP KEEPSAKE 23K BPG539951
SSP BLAZE 5F

BW: 87; 205 day: 529.

Exposed to Pioneer Red Sensation 2T -PG679589- May 7 to Aug 20/09.

A daughter of Lewis' donor cow, SSP Keepsake. 158M's first daughter sold to High Country for \$6,000. Sawyer Daley bought her Cashus daughter pictured above at Red & Black 2007 for \$5,000. A Cashus daughter in the sale, RPP 562R. 2 daughters in the herd.



Sevcik Simmental Ranch



33. ULTRA MS JOKER FINAL 16N

BLACK POLLED PUREBRED FEMALE

BPG590178

TC 16N

12 January 2003

HARTS BLACK CASINO B408
PVF-BF BF26 BLACK JOKER BPG523064
PVF-BF MABELLE C131

STOCKER 11H
ULTRA STOCK FINESSE 94L BPG555622
DRIFTING *M* FINESSE 1F

BW: 81; 205 day: 629.



Exposed to Remington Intimidator 82S -BPTG672989- May 20 to July 15/09 and also exposed to Prairie Wind Ritz 16U -BPG704445- July 16 to Aug 20/09.

A son is working at Vogstead Ranch and a daughter is at KMR Ranches. A daughter in the herd. This year's heifer (pictured above) is a good example.



34. LBR BOLDCAT 32N

POLLED PUREBRED FEMALE

PG601868

LBR 32N

3 February 2003

NLC 64Y TOMCAT
TSS BOZ BOLD CAT PG400874
BOZ RED LADY

ANCHOR *T* PIRATE 16F
LBR PIRATE 46J 530911
WEISSDALE ARND D20

CHERITHBROOK MR ABE
KS BM N713
BOLD FUTURE
MISS BIG SANDY U804
ZAMUTO
ANCHOR *T* ALDINE 55C
RHY NORTHERN ARNOLD 48B
BCR 238B

BW: 89; 205 day: 704.

Exposed to MI Playboy 3P -SG624952- May 20 to Aug 20/09.

A son at Sandiland's, Millarville, AB. 2 daughters in the herd.



35. LBR CABELLO 50N

BLACK POLLED PUREBRED FEMALE

BPG601882

LBR 50N

15 February 2003

TRIPLE C PETERBUILT H023
BAR 15 CABALLO 123L BPG550596
BAR 15 BALCK TOSCA 166H

BBS ZIMA D55
LBR ZIMA 34K PG541843
LBR IMAGE 7C

BW: 81; 205 day: 660.

Exposed to Pioneer Red Sensation 2T -PG679589- May 7 to Aug 20/09.

Sons at Meyer's, Delia, AB, Vogstead Ranch and Gary Katona's, Caroline, AB. A good PXP 2T bull calf in the pen this year.

LRS PREFERRED STOCK 370C
HART HOLLYWOOD QUEENE 700
BAR-X BLACK IRISH 79F
BAR 15 TOSCA LASS 68E
RED CADILLAC ZU95
MISS PELTZ N55
ABR SIR ARNOLDS IMAGE
MISS DUSTY 4A

36. ULTRA MISS COOPER 78N

BLACK POLLED PUREBRED FEMALE

BPG594649

TC 78N

1 February 2003

PVF-BF BF26 BLACK JOKER
CROSSFIRE 16L BPG561662
IPU MS BLACK DAKOTA 16J

BDV POWER BALL 1D
ULTRA POWER MISSCOOPER55J BPG537810
BDV COOPER F88

HARTS BLACK CASINO B408
PVF-BF MABELLE C131
BLACK POLLED DAKOTA
LBR D-427
MEYERS BLACK POWER
BDV BLACK LADY Y32
PPSR BLK POL DUSTER
BDV RED Y10

BW: 89; 205 day: 619.

Exposed to Remington Intimidator 82S -BPTG672989- May 20 to July 15/09 and also exposed to Prairie Wind Ritz 16U -BPG704445- July 16 to Aug 20/09.

A daughter in the sale. A good Remington Intimidator 82S (RCCI 82S) bull calf this year.

37. ULTRA NOON CANDY 99N

BLACK POLLED PUREBRED FEMALE

BPG594667

TC 99N

7 February 2003

GW PASQUE 182D
GW HIGH NOON 080H BPG561234
GW MISS 600U 1354C

J&C BLACK BOZO
ULTRA MISS BOZO CANDY 9H BPRS567027
BSL MISS COAL 124F

3C PASQUE 8773
GW MISS EQUALIZER 269B
CIRCLE S LEACHMAN 600U
GW MISS BRODERICK 191Z
LIBBYS BLACK BONUS BOZO
J&C MISS BLACK MAXINE X1
MEYERS BLK COALMINER 728
FN-ANAN ANGUS/ANGUS

BW: 72; 205 day: 564.

Exposed to Remington Intimidator 82S -BPTG672989- May 20 to July 15/09 and also exposed to Prairie Wind Ritz 16U -BPG704445- July 16 to Aug 20/09.

A daughter at Moonshine Simmentals. 2 bulls at good ranches.

Sevcik Simmental Ranch

38. BAR 15 BLACKBIRD 25J-105N

BLACK POLLED ½ BLOOD SIMMENTAL FEMALE
BPRS619237 AX 105N

24 January 2003

MEYERS MOST WANTED 25H
BAR 15 MOST WANTED 125K BPG528768
CCC BLACK CORDELIA 49E

MEYERS NORTHERN EXPOSURE
MEYERS BLK PERFECTION
BLACK IRISH KANSAS
NLC C79 CORDELIA

FN-ANAN ANGUS/ANGUS

BW: 84.

Exposed to Pioneer Red Sensation 2T -PG679589- May 7 to Aug 20/09.

A daughter at Wolbeck Farms. A bull calf in the pen.

39. SSP ROCKY RED 315N

POLLED PUREBRED FEMALE
PG621796

SSP 315N

27 January 2003

GW STOP LIGHT 024F
KAPPES ROCK SOLID H32 BPG540011
KAPPES LADY SKY F45

MV RED LIGHT 406
3C CROCUS D323 R
ER BIG SKY 545B
MISS PRICKLY PEAR 426S
COPPER BLACK S72
MISS PRICKLY PEAR 426S
ALTA HORN 8X
SSP WRANGLER GAL 153X

CHARLES PRIDE

SSP 10E BPG550640

SSP MISS HORN 526B

BW: 87; 205 day: 587; 365 day: 913.

Exposed to Remington Intimidator 82S -BPTG672989- May 20 to July 15/09 and also exposed to Prairie Wind Ritz 16U -BPG704445- July 16 to Aug 20/09.

A real good RCCI 82S heifer calf this year. Another in the bred pen.

40. SSP MS KENNY 332N

POLLED PUREBRED FEMALE
PG621812

SSP 332N

8 February 2003

BAR 15 MESCALERO 109H
BFPS KENNY 22K PG532300
GFP EMOTIONAL GIRL 19H

ER MACKFRID 550B
NLC BEEBA B22
WHF RED DOC 940E
GFP MISS RED PRECIOUS 8F
CHERAY AMAZE 23A
CHERAY BRENDA 14B
MR WRS WINNER 57A
SSP MISSENFORCER 104X

LBR AMAZE 13D

SSP MS AMAZE 133H 502079

SSP LADY WINNER 680C

BW: 88; 205 day: 551; 365 day: 847.

Exposed to Remington Intimidator 82S -BPTG672989- May 20 to July 15/09 and also exposed to Prairie Wind Ritz 16U -BPG704445- July 16 to Aug 20/09.

A son working at Hand Hills. Real nice RCCI 82S heifer calf.

41. RPP MS GINGER 339N

POLLED PUREBRED FEMALE
PG621814

RPP 339N

11 February 2003

IPU BLACK DAKOTA 46G
RPP DOODAD 113L BSTG565994
IPU CHARLIE'S ANGEL 62E

BLACK POLLED DAKOTA
LBR C-361
CHARLES PRIDE
DMX LADY 3B
BLACK POLLED DAKOTA
MFL KONZE 9Z
CHIEF RED BEAR
DOUBLE K L SPOT

CZAR MR BLACK TIGER 4F

CZAR MS GINGER 722J PG523485

DOUBLE K L 722F

BW: 88; 205 day: 646; 365 day: 993.

Exposed to Remington Intimidator 82S -BPTG672989- May 20 to July 15/09 and also exposed to Prairie Wind Ritz 16U -BPG704445- July 16 to Aug 20/09.

Has a good Cashus bull calf this year.



42. SSP MS BOSCO 343N

POLLED PUREBRED FEMALE
PG621816

SSP 343N

17 February 2003

PVF FIFTH AVENUE 761G
LFE MR LEWIS 419L PG563218
LFE JULI 614F

BBS ZIMA D55
BDV ARLENE E81
ASR TABASCO D409
LFE JULI 78D

PIONEER WRANGLER

SSP EVIE 3E G368426

SSP MISS ROYAL 668C

DANUELI TOPPER 515T
DANUELI VERONI 529T
RDD MR ROYAL 02Z
SSP MISS ROCKER 48N

BW: 86; 205 day: 615; 365 day: 942.

Exposed to Remington Intimidator 82S -BPTG672989- May 20 to July 15/09 and also exposed to Prairie Wind Ritz 16U -BPG704445- July 16 to Aug 20/09.

A super young cow. Has an awesome RCCI 82S heifer calf this year.



43. CSS MS BOSCO 348N

POLLED PUREBRED FEMALE
PG621820

CSS 348N

28 February 2003

PVF FIFTH AVENUE 761G
LFE MR LEWIS 419L PG563218
LFE JULI 614F

BBS ZIMA D55
BDV ARLENE E81
ASR TABASCO D409
LFE JULI 78D

RIVERGLEN TOPGUN

DONHAZ MS TOPGUN 6D 300699

LWC MISS THUNDER 12A

MR DUSTY SIR ARNOLD 15X
RIVERGLEN TINA
RICHMOND THUNDER 60Y
LWC 21U

BW: 84; 205 day: 566; 365 day: 863.

Exposed to Remington Intimidator 82S -BPTG672989- May 20 to July 15/09 and also exposed to Prairie Wind Ritz 16U -BPG704445- July 16 to Aug 20/09.

Has a very good thick, black blaze faced RCCI 82S heifer calf this year (pictured above).

Sevcik Simmental Ranch

44. SSP MS SHUTOUT 347N

POLLED PUREBRED FEMALE

PG621818

SSP 347N

21 February 2003

WHF RED ROOKIE 160E
CZAR MR SHUTOUT 20J PG521889
MISS PARKHILL 22A

KLONDIKE ARNIE GNM 250Z
SSP MS ARNIE 54H 502085
SSP PRINCESS 89D

DS BLACK ZINGER 141B
BDV RUBY C60
PARKHILL TONIUS
MISS PARKHILL 2U
SRF MR BIGFOOT S138
SIM-ROC GWEN
KFL CROWN 48Z
SSP LADY D D 66W

BW: 87; 205 day: 597; 365 day: 916.

Exposed to Remington Intimidator 82S -BPTG672989- May 20 to July 15/09 and also exposed to Prairie Wind Ritz 16U -BPG704445- July 16 to Aug 20/09.

Raised a good Rush son working at Armstrong Properties.



46. RPP MS BOSCO 360N

POLLED PUREBRED FEMALE

PG621824

RPP 360N

2 March 2003

PVF FIFTH AVENUE 761G
LFE MR LEWIS 419L PG563218
LFE JULI 614F

SSP EXAMINER 32E
RPP MISS X 109G 399950
RPP LADY LUCK 96E



BW: 88; 205 day: 642; 365 day: 978.

Exposed to Remington Intimidator 82S -BPTG672989- May 20 to July 15/09 and also exposed to Prairie Wind Ritz 16U -BPG704445- July 16 to Aug 20/09.

Has an awesome RCCI 82S bull calf pictured above. 2 daughters in the herd.

48. SSP MS SHUTOUT 361N

POLLED PUREBRED FEMALE

PG621825

SSP 361N

2 March 2003

WHF RED ROOKIE 160E
CZAR MR SHUTOUT 20J PG521889
MISS PARKHILL 22A

BAR 5 MR ROYALTY 424Z
SSP MS AMAZE 52J 526439
SSP OBSESSION 7F

DS BLACK ZINGER 141B
BDV RUBY C60
PARKHILL TONIUS
MISS PARKHILL 2U
BAR 5 CROWN ROYAL 419W
DEK POLLED MANDY 48P
KLONDIKE ARNIE GNM 250Z
SSP LADY DEUCE 607C

BW: 83; 205 day: 648; 365 day: 996.

Exposed to Remington Intimidator 82S -BPTG672989- May 20 to July 15/09 and also exposed to Prairie Wind Ritz 16U -BPG704445- July 16 to Aug 20/09.

A good, high volume cow that works hard.

45. RPP MS KENNY 350N

POLLED PUREBRED FEMALE

PG621822

RPP 350N

24 February 2003

BAR 15 MESCALERO 109H
BFPS KENNY 22K PG532300
GFP EMOTIONAL GIRL 19H

BAR 5 PREMIER 922Z
PSE SKIPPY'S ESCORT 26E 329006
WATER LILY 20W

ER MACKFRID 550B
NLC BEEBA B22
WHF RED DOC 940E
GFP MISS RED PRECIOUS 8F
BAR 5 PRESTIGE 681T
BAR 5 BEST LADY 400X
DENEILS TEDDY BEAR 62T
MISS CET 123M

BW: 87; 205 day: 657; 365 day: 1004.

Exposed to Remington Intimidator 82S -BPTG672989- May 20 to July 15/09 and also exposed to Prairie Wind Ritz 16U -BPG704445- July 16 to Aug 20/09.

2 daughters in the herd. A RCCI 82S bull calf in the bull pen.



47. SSP MS KENNY 368N

POLLED PUREBRED FEMALE

PG621828

SSP 368N

7 March 2003

BAR 15 MESCALERO 109H
BFPS KENNY 22K PG532300
GFP EMOTIONAL GIRL 19H

LBR AMAZE 13D
SSP AMAZING COLORS 132H 502071
SSP LADY DEUCE 607C

ER MACKFRID 550B
NLC BEEBA B22
WHF RED DOC 940E
GFP MISS RED PRECIOUS 8F
CHERAY AMAZE 23A
CHERAY BRENDA 14B
SIR BAR 40 DEUCE
WSR MISS AMARILLA 18A

BW: 89; 205 day: 667; 365 day: 1015.

Exposed to Remington Intimidator 82S -BPTG672989- May 20 to July 15/09 and also exposed to Prairie Wind Ritz 16U -BPG704445- July 16 to Aug 20/09.

A son works commercially. A daughter in the herd.

49. RPP MS SHUTOUT 362N

POLLED PUREBRED FEMALE

PG621826

RPP 362N

3 March 2003

WHF RED ROOKIE 160E
CZAR MR SHUTOUT 20J PG521889
MISS PARKHILL 22A

KFL CROWN 48Z
DTD JEZABELLE 608C 297707
MISS DTD GLORY GIRL 346Z

DS BLACK ZINGER 141B
BDV RUBY C60
PARKHILL TONIUS
MISS PARKHILL 2U
BAR 5 CROWN ROYAL 419W
JRSF MISS AWESUM 007U
RIVERGLEN WOODY
HRD MISS SUPERSTAR

BW: 87; 205 day: 651; 365 day: 986.

Exposed to Remington Intimidator 82S -BPTG672989- May 20 to July 15/09 and also exposed to Prairie Wind Ritz 16U -BPG704445- July 16 to Aug 20/09.

Has a son at Armstrong Properties. A good RCCI 82S son in the bull pen.

Sevcik Simmental Ranch

50. SSP MS KENNY 373N

POLLED PUREBRED FEMALE

PG621829 SSP 373N 11 March 2003

BAR 15 MESCALERO 109H
BFPS KENNY 22K PG532300
GFP EMOTIONAL GIRL 19H

ALTA HORN 8X
SSP MS FREEZI 427A 256577
MS R.C. 12U

ER MACKFRID 550B
NLC BEEBA B22
WHF RED DOC 940E
GFP MISS RED PRECIOUS 8F
HORN
BUSHY PARK HEIDI II
BAR 5 GOLD STEEL 591R
MS RED CREEK 2S

BW: 89; 205 day: 663; 365 day: 1001.

Exposed to Remington Intimidator 82S -BPTG672989- May 20 to July 15/09 and also exposed to Prairie Wind Ritz 16U -BPG704445- July 16 to Aug 20/09.

A daughter in the sale and one in the herd.

51. SSP MS SHUTOT 377N

POLLED PUREBRED FEMALE

PG621789 SSP 377N 13 March 2003

WHF RED ROOKIE 160E
CZAR MR SHUTOUT 20J PG521889
MISS PARKHILL 22A

MR WRS WINNER 57A
SSP HEVENLY GRACE 49G 388017
RIVERGLEN BELLE

DS BLACK ZINGER 141B
BDV RUBY C60
PARKHILL TONIUS
MISS PARKHILL 2U
CSR BOLD WINNER 110W
BAR 5 MS BIGSKY1464W
MYALTA PARAGON 1J
RIVERGLEN GINGER

BW: 87; 205 day: 706; 365 day: 1073.

Exposed to Remington Intimidator 82S -BPTG672989- May 20 to July 15/09 and also exposed to Prairie Wind Ritz 16U -BPG704445- July 16 to Aug 20/09.

A daughter in the herd. A good RCCI 82S heifer calf this year.

52. SSP MS BOSCO 384N

POLLED PUREBRED FEMALE

PG621795 SSP 384N 18 March 2003

PVF FIFTH AVENUE 761G
LFE MR LEWIS 419L PG563218
LFE JULI 614F

CFR MR CURTIS 73G
SUN STAR KALI 31K PG534856
SUN STAR MS ELNINO 12E

BBS ZIMA D55
BDV ARLENE E81
ASR TABASCO D409
LFE JULI 78D
RED PEPPER
BAR 15 MS DAKOTA 43C
BAR 15 EL NINO 5B
SUNNY VALLEY SIG-GAL

BW: 86; 205 day: 657; 365 day: 1017.

Exposed to Remington Intimidator 82S -BPTG672989- May 20 to July 15/09 and also exposed to Prairie Wind Ritz 16U -BPG704445- July 16 to Aug 20/09.

Dam is SSSF 31K. Has a son working commercially and a daughter in the herd.

53. SSP MS BOSCO 385N

POLLED PUREBRED FEMALE

PG621797 SSP 385N 19 March 2003

PVF FIFTH AVENUE 761G
LFE MR LEWIS 419L PG563218
LFE JULI 614F

SSP EXAMINER 32E
SSP MISS X 54K 539942
MS CANADIANA 277B

BBS ZIMA D55
BDV ARLENE E81
ASR TABASCO D409
LFE JULI 78D
GREAT GUNS KARL 17C
SSP CHANTILLY LACE 432A
BAR 5 ACCELERATION 372Y
BGD PAMELA 065Z

BW: 84; 205 day: 709; 365 day: 1057.

Exposed to Remington Intimidator 82S -BPTG672989- May 20 to July 15/09 and also exposed to Prairie Wind Ritz 16U -BPG704445- July 16 to Aug 20/09.

Dam is SSP 54K. Has a nice RCCI 82S heifer calf this year.

54. RPP MS SHUTOUT 392N

POLLED PUREBRED FEMALE

PG621805 RPP 392N 22 March 2003

WHF RED ROOKIE 160E
CZAR MR SHUTOUT 20J PG521889
MISS PARKHILL 22A

ALTA HORN 8X
DTD DREAMY STARLITE 410A 256671
HRD MISS SUPERSTAR

DS BLACK ZINGER 141B
BDV RUBY C60
PARKHILL TONIUS
MISS PARKHILL 2U
HORN
BUSHY PARK HEIDI II
CSV ACHILLES SUPERSTAR
HRD SIS' EXTRA

BW: 87; 205 day: 632; 365 day: 1026.

Exposed to Remington Intimidator 82S -BPTG672989- May 20 to July 15/09 and also exposed to Prairie Wind Ritz 16U -BPG704445- July 16 to Aug 20/09.



55. SSP MS BOSCO 403N

POLLED PUREBRED FEMALE

PG621813 TWIN SSP 403N 26 March 2003

PVF FIFTH AVENUE 761G
LFE MR LEWIS 419L PG563218
LFE JULI 614F

SSP EXAMINER 32E
SSP ETERNAL FLAME 83J 507315
SSP ETERNITY 2E

BBS ZIMA D55
BDV ARLENE E81
ASR TABASCO D409
LFE JULI 78D
GREAT GUNS KARL 17C
SSP CHANTILLY LACE 432A
KLONDIKE ARNIE GNM 250Z
SSP LADY DEUCE 607C

BW: 83; 205 day: 634; 365 day: 956.

Exposed to Remington Intimidator 82S -BPTG672989- May 20 to July 15/09 and also exposed to Prairie Wind Ritz 16U -BPG704445- July 16 to Aug 20/09.

Twin to SSP 402N. Has a really good heifer calf by RCCI 82S.

56. SSP MS BOSCO 402N

POLLED PUREBRED FEMALE

PG621811 TWIN SSP 402N 26 March 2003

PVF FIFTH AVENUE 761G
LFE MR LEWIS 419L PG563218
LFE JULI 614F

SSP EXAMINER 32E
SSP ETERNAL FLAME 83J 507315
SSP ETERNITY 2E

BBS ZIMA D55
BDV ARLENE E81
ASR TABASCO D409
LFE JULI 78D
GREAT GUNS KARL 17C
SSP CHANTILLY LACE 432A
KLONDIKE ARNIE GNM 250Z
SSP LADY DEUCE 607C

BW: 78; 205 day: 656; 365 day: 982.

Exposed to Remington Intimidator 82S -BPTG672989- May 20 to July 15/09 and also exposed to Prairie Wind Ritz 16U -BPG704445- July 16 to Aug 20/09.

Twin to SSP 403N. An Eternity 2E granddaughter. 2E was Champion Female at Agribition in 1997.

Sevcik Simmental Ranch

57. RPP MS BOSCO 415N

BLACK POLLED 1/2 BLOOD SIMMENTAL FEMALE
BPRS621815 RPP 415N 14 April 2003

PVF FIFTH AVENUE 761G
LFE MR LEWIS 419L PG563218
LFE JULI 614F

BBS ZIMA D55
BDV ARLENE E81
ASR TABASCO D409
LFE JULI 78D

FN-ANAN ANGUS/ANGUS

BW: 78; 205 day: 716; 365 day: 1051.

Exposed to Remington Intimidator 82S -BPTG672989- May 20 to July 15/09 and also exposed to Prairie Wind Ritz 16U -BPG704445- July 16 to Aug 20/09.

Has 2 sons working at ranches. Another this year by RCCI 82S.



59. RPP MS BOSCO 427N

BLACK POLLED 1/2 BLOOD SIMMENTAL FEMALE
BPRS621821 RPP 427N 14 May 2003

PVF FIFTH AVENUE 761G
LFE MR LEWIS 419L PG563218
LFE JULI 614F

BBS ZIMA D55
BDV ARLENE E81
ASR TABASCO D409
LFE JULI 78D

FN-ANAN ANGUS/ANGUS

BW: 78; 205 day: 705; 365 day: 1084.

Exposed to Remington Intimidator 82S -BPTG672989- May 20 to July 15/09 and also exposed to Prairie Wind Ritz 16U -BPG704445- July 16 to Aug 20/09.

A daughter in the herd. A real good RCCI 82S bull calf this year pictured above.

58. SSO MS BOSCO 425N

POLLED 3/4 SIMMENTAL FEMALE
PRS621819 SSP 425N 4 May 2003

PVF FIFTH AVENUE 761G
LFE MR LEWIS 419L PG563218
LFE JULI 614F

BBS ZIMA D55
BDV ARLENE E81
ASR TABASCO D409
LFE JULI 78D
GREAT GUNS KARL 17C
SSP CHANTILLY LACE 432A

SSP EXAMINER 32E
SSP MISS X 75K RS540000

FN-SMSM SIMMENTAL/SIMMENTAL

BW: 82; 205 day: 815; 365 day: 1159.

Exposed to Remington Intimidator 82S -BPTG672989- May 20 to July 15/09 and also exposed to Prairie Wind Ritz 16U -BPG704445- July 16 to Aug 20/09.

A daughter in the herd. A good RCCI 82S heifer calf this year.



60. SSP MS BOSCO 420P

SCURRED PUREBRED FEMALE
SG640784 SSP 420P 6 February 2004

PVF FIFTH AVENUE 761G
LFE MR LEWIS 419L PG563218
LFE JULI 614F

BBS ZIMA D55
BDV ARLENE E81
ASR TABASCO D409
LFE JULI 78D
SRF MR BIGFOOT S138
SIM-ROC GWEN
SIR BAR 40 DEUCE
WSR MISS AMARILLA 18A

KLONDIKE ARNIE GNM 250Z
SSP OBSESSION 7F 367763
SSP LADY DEUCE 607C

BW: 92; 205 day: 613; 365 day: 915.

Exposed to Remington Intimidator 82S -BPTG672989- May 20 to July 15/09 and also exposed to Prairie Wind Ritz 16U -BPG704445- July 16 to Aug 20/09.

Goes back to the 607C cow family. Has a very good RCCI 82S heifer calf; may watch for her next fall.

61. RPP MISS BEEF 407P

POLLED PUREBRED FEMALE
PG640756 RPP 407P 24 January 2004

GFI BRANDO H02
BRANDED BEEF LCC L397L PG609100
LCHMN BWF BALDY G7001

GW STOP LIGHT 024F
MISS 600U CH D037
LCHMN BLACKKEYED JOE7000D
LCHMN BLK BALDY E7021
WHF RED ROOKIE 160E
MISS PARKHILL 22A
BAR 5 SIR MVP 607D
MISS DUSTY FOREMAN 1C

CZAR MR SHUTOUT 20J
RPP MS SHUTOUT 54M SG606547
CHERAY FALINA 26F

BW: 82; 205 day: 627; 365 day: 998.

Exposed to Remington Intimidator 82S -BPTG672989- May 20 to July 15/09 and also exposed to Prairie Wind Ritz 16U -BPG704445- July 16 to Aug 20/09.

A broody Branded Beef daughter. 2 daughters in the herd.

62. DTD MS BEEF 415P

POLLED PUREBRED FEMALE
PG640755 DTD 415P 2 February 2004

GFI BRANDO H02
BRANDED BEEF LCC L397L PG609100
LCHMN BWF BALDY G7001

GW STOP LIGHT 024F
MISS 600U CH D037
LCHMN BLACKKEYED JOE7000D
LCHMN BLK BALDY E7021
FF BODACIOUS B900
CIRCLE S 7U
MR CAMP CASANOVA 17C
SSP MISS DESTINY 9P

IPU RED BODACIOUS 104H
DTD MS BO 78M PG606558
DTD MISS CASSY 129F

BW: 82; 205 day: 641; 365 day: 999.

Exposed to Remington Intimidator 82S -BPTG672989- May 20 to July 15/09 and also exposed to Prairie Wind Ritz 16U -BPG704445- July 16 to Aug 20/09.

Dam is DTD 78M. A real good RCCI 82S heifer calf this year.

Sevcik Simmental Ranch

63. SSP MS BEEF 421P

POLLED PUREBRED FEMALE
PG640785

SSP 421P

8 February 2004

GFI BRANDO H02
BRANDED BEEF LCC L397L PG609100
LCHMN BWF BALDY G7001

GW STOP LIGHT 024F
MISS 600U CH D037
LCHMN BLACKKEYED JOE7000D
LCHMN BLK BALDY E7021
WHF RED ROOKIE 160E
MISS PARKHILL 22A
BAR 5 BOTTOMLINE 374C
SSP MISS ZOAR 654C

CZAR MR SHUTOUT 20J
SSP MS SHUTOUT 84M PG606559
SSP MS BOTTOM LINE 10G

BW: 87; 205 day: 650; 365 day: 908.

Exposed to Remington Intimidator 82S -BPTG672989- May 20 to July 15/09 and also exposed to Prairie Wind Ritz 16U -BPG704445- July 16 to Aug 20/09.

Dam is SSP 84M. Has a good, black blaze faced heifer calf by RCCI 82S.

64. CSS MS KENNY 426P

POLLED PUREBRED FEMALE
PG640752

CSS 426P

9 February 2004

BAR 15 MESCALERO 109H
BFPS KENNY 22K PG532300
GFP EMOTIONAL GIRL 19H

ER MACKFRID 550B
NLC BEEBA B22
WHF RED DOC 940E
GFP MISS RED PRECIOUS 8F
FF BODACIOUS B900
CIRCLE S 7U
MAHOGANY RED 82X
EDN MISS 70N

IPU RED BODACIOUS 104H
CSS MISS RED BO 113K PG540221
M&S MISS MAHOGANY 6A

BW: 84; 205 day: 609; 365 day: 943.

Exposed to Remington Intimidator 82S -BPTG672989- May 20 to July 15/09 and also exposed to Prairie Wind Ritz 16U -BPG704445- July 16 to Aug 20/09.

Dam is CSS 113K. A good RCCI 82S heifer calf this year.

65. SSP MS CASHUS 431P

BLACK POLLED PUREBRED FEMALE
BPG640786

SSP 431P

12 February 2004

BOZ REDCOAT
HSF CASHUS 62L BPTG622031
HSF VANESSA 45D

HERCULES 538P
BOZ RED LADY
DS POLLFLECK 809
MS HIGH BRED 53A
GREAT GUNS KARL 17C
SSP CHANTILLY LACE 432A
JRSF HEARTBEAT OF AMERICA
RIVERGLEN BELLE

SSP EXAMINER 32E
SSP DAWN 164L P565976
SSP DELTA DAWN 8D

BW: 85; 205 day: 662; 365 day: 889.

Exposed to Remington Intimidator 82S -BPTG672989- May 20 to July 15/09 and also exposed to Prairie Wind Ritz 16U -BPG704445- July 16 to Aug 20/09.

A full sister to Virginia Ranch's Ricky Bobby bull. 2 full sisters at home. Dam is SSP 164L.

66. SSP MS KENNY 454P

POLLED PUREBRED FEMALE
PG640790

SSP 454P

25 February 2004

BAR 15 MESCALERO 109H
BFPS KENNY 22K PG532300
GFP EMOTIONAL GIRL 19H

ER MACKFRID 550B
NLC BEEBA B22
WHF RED DOC 940E
GFP MISS RED PRECIOUS 8F
RED PEPPER
BAR 15 MS DAKOTA 43C
BAR 15 EL NINO 5B
SUNNY VALLEY SIG-GAL

CFR MR CURTIS 73G
SUN STAR KALI 31K PG534856
SUN STAR MS ELNINO 12E

BW: 88; 205 day: 572; 365 day: 919.

Exposed to Remington Intimidator 82S -BPTG672989- May 20 to July 15/09 and also exposed to Prairie Wind Ritz 16U -BPG704445- July 16 to Aug 20/09.

Dam is SSSF 31K. A smaller cow that works hard. Has very good twin heifer calves by RCCI 82S. SSP 454P weaned off more than 90% of her body weight.



67. SSP PARIS 461P

POLLED PUREBRED FEMALE
PG640791

SSP 461P

27 February 2004

BOZ REDCOAT
HSF CASHUS 62L BPTG622031
HSF VANESSA 45D

HERCULES 538P
BOZ RED LADY
DS POLLFLECK 809
MS HIGH BRED 53A
GREAT GUNS KARL 17C
SSP CHANTILLY LACE 432A
DATAMAN GABI 214B
SSP MISS ROYAL 573B

SSP EXAMINER 32E
SSP EXAMINER 94G G399939
SSP GABI 75E

BW: 92; 205 day: 672; 365 day: 930.

Exposed to Remington Intimidator 82S -BPTG672989- May 20 to July 15/09 and also exposed to Prairie Wind Ritz 16U -BPG704445- July 16 to Aug 20/09.

Great cow family. A sister to Beechinor's donor cow, SSP Mystery 19M. Also has sisters working at Jen Schmid's herd.

68. RPP MS BO 462P

POLLED PUREBRED FEMALE
PG640759

RPP 462P

28 February 2004

FF BODACIOUS B900
IPU RED BODACIOUS 104H PG416201
CIRCLE S 7U

BLUE PRINT MCM 63X
MISS INCUMBENT 34Z
LANDRIDGE JET BLACK
CIRCLE S 22S
SIM-ROC ALI
CORMIE MISS LUCKY
MFL BIG SKY 17S
BAR 5 MS BEST 443N

4-S ALI'S FORTUNE 13D
RPP BIG FORTUNE 92F 387914
BAR 5 MS BIGSKY1464W

BW: 87; 205 day: 628; 365 day: 943.

Exposed to Remington Intimidator 82S -BPTG672989- May 20 to July 15/09 and also exposed to Prairie Wind Ritz 16U -BPG704445- July 16 to Aug 20/09.

2 daughters in the herd. A bull works at a good ranch.

69. SSP MS SHUTOUT 473P

POLLED PUREBRED FEMALE
PG640794

SSP 473P

7 March 2004

WHF RED ROOKIE 160E
CZAR MR SHUTOUT 20J PG521889
MISS PARKHILL 22A

DS BLACK ZINGER 141B
BDV RUBY C60
PARKHILL TONIUS
MISS PARKHILL 2U
CHERAY AMAZE 23A
CHERAY BRENDA 14B
KFL CROWN 48Z
SSP DESTINY LADY 7P

LBR AMAZE 13D
SSP MS AMAZE 135H 502067
SSP LADY CROWN 557B

BW: 88; 205 day: 658; 365 day: 941.

Exposed to Remington Intimidator 82S -BPTG672989- May 20 to July 15/09 and also exposed to Prairie Wind Ritz 16U -BPG704445- July 16 to Aug 20/09.

A daughter in the herd. A nice RCCI 82S heifer calf this year.

Sevcik Simmental Ranch



70. SSP MS KENNY 464P

POLLED PUREBRED FEMALE
PG640792

SSP 464P

29 February 2004

BAR 15 MESCALERO 109H
BFPS KENNY 22K PG532300
GFP EMOTIONAL GIRL 19H

MR WRS WINNER 57A
SSP HEVENLY GRACE 49G 388017
RIVERGLEN BELLE

ER MACKFRID 550B
NLC BEEBA B22
WHF RED DOC 940E
GFP MISS RED PRECIOUS 8F
CSR BOLD WINNER 110W
BAR 5 MS BIGSKY1464W
MYALTA PARAGON 1J
RIVERGLEN GINGER

BW: 87; 205 day: 641; 365 day: 892.

Exposed to Remington Intimidator 82S -BPTG672989- May 20 to July 15/09 and also exposed to Prairie Wind Ritz 16U -BPG704445- July 16 to Aug 20/09.

A sister to SSP 377N.



71. RPP MS M F 469P

BLACK POLLED PUREBRED FEMALE
BPG640760

RPP 469P

4 March 2004

PVF-BF BF26 BLACK JOKER
S-PAW MUTUAL FUND 301M BPTG582410
ER MISS MAX 57Y

CZAR MR SHUTOUT 20J
RPP MS SHUTOUT 37M PG606541
MISS BKJS CLASSY GAL 3C

HARTS BLACK CASINO B408
PVF-BF MABELLE C131
BLACK MAX
ER MISS REDLINE 10T
WHF RED ROOKIE 160E
MISS PARKHILL 22A
GREAT GUNS FERDINAND 13Z
MISS BKJS GOLDIE 1Z

BW: 88; 205 day: 805; 365 day: 912.

Exposed to Remington Intimidator 82S -BPTG672989- May 20 to July 15/09 and also exposed to Prairie Wind Ritz 16U -BPG704445- July 16 to Aug 20/09.

3 daughters in the herd.



72. CSS MS CASHUS 477P

BLACK POLLED PUREBRED FEMALE
BPG640753

CSS 477P

9 March 2004

BOZ REDCOAT
HSF CASHUS 62L BPTG622031
HSF VANESSA 45D

LBR AMAZE 13D
CSS MS AMAZE 137H 502029
MISS XSJ 1B

HERCULES 538P
BOZ RED LADY
DS POLLFLECK 809
MS HIGH BRED 53A
CHERAY AMAZE 23A
CHERAY BRENDA 14B
J ANCHOR JUMBO 9Z
HRD MISS JR 07X

BW: 87; 205 day: 692; 365 day: 938.

Exposed to Remington Intimidator 82S -BPTG672989- May 20 to July 15/09 and also exposed to Prairie Wind Ritz 16U -BPG704445- July 16 to Aug 20/09.

A daughter in the bred heifer pen and the heifer calf pen by RCCI 82S.

73. SSP MS CASHUS 485P

BLACK POLLED PUREBRED FEMALE
BPG640796

SSP 485P

13 March 2004

BOZ REDCOAT
HSF CASHUS 62L BPTG622031
HSF VANESSA 45D

MR WRS WINNER 57A
SSP LUCKY RED 45E 368428
KAYPANT 3T

HERCULES 538P
BOZ RED LADY
DS POLLFLECK 809
MS HIGH BRED 53A
CSR BOLD WINNER 110W
BAR 5 MS BIGSKY1464W
SRN PANTHER
MHS 4K

BW: 89; 205 day: 637; 365 day: 952.

Exposed to Remington Intimidator 82S -BPTG672989- May 20 to July 15/09 and also exposed to Prairie Wind Ritz 16U -BPG704445- July 16 to Aug 20/09.

A good, broody Cashus daughter. A daughter by Rush in the bred heifer pen. Has a good heifer calf by RCCI 82S this year.

74. RPP MS CASHUS 501P

BLACK POLLED PUREBRED FEMALE
BPG640763

RPP 501P

23 March 2004

BOZ REDCOAT
HSF CASHUS 62L BPTG622031
HSF VANESSA 45D

SIR BAF KNIGHT REWARD 16D
A BAR J MISS ELVIRA 47K BG553759
BAF MISS BLACK ONYX 26Z

HERCULES 538P
BOZ RED LADY
DS POLLFLECK 809
MS HIGH BRED 53A
IRISH BLACK KNIGHT
MS BAF JASMINE 38W
LPR GOLD DUST 12W
MS BAF CHALKIE 14W

BW: 86; 205 day: 631; 365 day: 940.

Exposed to Remington Intimidator 82S -BPTG672989- May 20 to July 15/09 and also exposed to Prairie Wind Ritz 16U -BPG704445- July 16 to Aug 20/09.

Goes back the the Knight Reward 16D bull. Has a really good, black blaze faced RCCI 82S heifer calf this year.

Sevcik Simmental Ranch



75. SSP MS NOBLE 506R

POLLED PUREBRED FEMALE
PG653480 SSP 506R 22 January 2005

DRYCREEK LARRY 15L
YR RED NOBLEMAN 52N PG608614
MS BGS OLIVE 92G

BFPS KENNY 22K
SSP MS KENNY 373N PG621829
SSP MS FREEZI 427A

PRICKLY PEAR 19H
GW MISS WALLY 822G
PARKHILL CHARLEY 119E
MISS PARKHILL OLIVIA 03E
BAR 15 MESCALERO 109H
GFP EMOTIONAL GIRL 19H
ALTA HORN 8X
MS R.C. 12U

BW: 78; 205 day: 625; 365 day: 1003.

Exposed to Pioneer Red Sensation 2T -PG679589- May 7 to Aug 20/09.

Dam is 373N. Has a good NAC Timon 43T bull calf. Daughter pictured above sold in the 2008 Red & Black sale to Loralta Farms.



76. SSP BLACK ROSE 507R

BLACK POLLED PUREBRED FEMALE
BPG640797 SSP 507R 23 January 2005

BOZ REDCOAT
HSF CASHUS 62L BPTG622031
HSF VANESSA 45D

CHARLES PRIDE
SSP BLAZE 5F RS387979
SSP MISS ROYALTY 98D

HERCULES 538P
BOZ RED LADY
DS POLLFLECK 809
MS HIGH BRED 53A
COPPER BLACK S72
MISS PRICKLY PEAR 426S
RDD MR ROYAL 02Z
FN-SMXX SIMMENTAL/CROSSBRED

BW: 88; 205 day: 614; 365 day: 937.

Exposed to Remington Intimidator 82S -BPTG672989- May 20 to July 15/09 and also exposed to Prairie Wind Ritz 16U -BPG704445- July 16 to Aug 20/09.

A maternal sister to Keepsake (pictured above) and out of Cashus. Full sister in the herd.

77. SSP MS NOBLE 510R

POLLED PUREBRED FEMALE
PG653483 SSP 510R 26 January 2005

DRYCREEK LARRY 15L
YR RED NOBLEMAN 52N PG608614
MS BGS OLIVE 92G

LFE MR LEWIS 419L
SSP MS BOSCO 334N SG629772
SSP GABI 75E

PRICKLY PEAR 19H
GW MISS WALLY 822G
PARKHILL CHARLEY 119E
MISS PARKHILL OLIVIA 03E
PVF FIFTH AVENUE 761G
LFE JULI 614F
DATAMAN GABI 214B
SSP MISS ROYAL 573B

BW: 88; 205 day: 701; 365 day: 997.

Exposed to MI Playboy 3P -SG624952- May 20 to Aug 20/09.

Same cow family as SSP 461P.



78. SSP BLACK LACE 547R

BLACK POLLED PUREBRED FEMALE
BPG640804 SSP 547R 14 February 2005

BOZ REDCOAT
HSF CASHUS 62L BPTG622031
HSF VANESSA 45D

LRS BIG COUNTRY 37E
SSP BLACK LACE 112L BPG565962
SSP BLAZE 5F

HERCULES 538P
BOZ RED LADY
DS POLLFLECK 809
MS HIGH BRED 53A
DS BLACK ZINGER 141B
LRS MISS 600U 304C
CHARLES PRIDE
SSP MISS ROYALTY 98D

BW: 81; 205 day: 624; 365 day: 1046.

Exposed to Calico Red 810U -PG706000- May 20 to Aug 20/09.

A Cashus daughter out of Keepsake's full sister. A full sister to 547R sold to Foxy Lady Cattle Company, Foxwarren, MB at Red & Black.

79. RPP MS CASHUS 535R

POLLED PUREBRED FEMALE
PG653514 RPP 535R 7 February 2005

BOZ REDCOAT
HSF CASHUS 62L BPTG622031
HSF VANESSA 45D

RED INCUMBENT
JB DISTINCTION 409D PG312830
MISS ECLIPSE WIL 88R

HERCULES 538P
BOZ RED LADY
DS POLLFLECK 809
MS HIGH BRED 53A
C&B INCUMBENT 4131
C&B MISS P STRECH 3011P
MR ECLIPSE
GALANT WIL 68L

BW: 89; 205 day: 622; 365 day: 1089.

Exposed to MI Playboy 3P -SG624952- May 20 to Aug 20/09.

A great cow family. Full sister to Twin Chief's Pepsi cow. Maternal sisters have worked well for Westway, Hoegl Farms and Christensen's. A maternal brother at Carr Farms.

Sevcik Simmental Ranch



80. SSP MS CASHUS 551R

BLACK POLLED PUREBRED FEMALE
BPG653496 SSP 551R 15 February 2005

BOZ REDCOAT
HSF CASHUS 62L
HSF VANESSA 45D

SSP EXAMINER 32E
SSP MS EXAMNER 91H G525628
SSP FLASHY 59E

HERCULES 538P
BOZ RED LADY
DS POLLFLECK 809
MS HIGH BRED 53A
GREAT GUNS KARL 17C
SSP CHANTILLY LACE 432A
PIONEER WRANGLER
SSP MISS ZOAR 636C

BW: 91; 205 day: 610; 365 day: 1023.
Exposed to Calico Red 810U -PG706000- May 20 to Aug 20/09.
Has a good MJIS 3P daughter this year. Out of HSF Cashus pictured above.



81. RPP MS CASHUS 562R

POLLED PUREBRED FEMALE
PG666602 RPP 562R 20 February 2005

BOZ REDCOAT
HSF CASHUS 62L BPTG622031
HSF VANESSA 45D

ER BLACK CISCO 532C
LFE KEEPSAKE 158M PG602240
SSP KEEPSAKE 23K

HERCULES 538P
BOZ RED LADY
DS POLLFLECK 809
MS HIGH BRED 53A
PTL POLLED STATS
ER MISS MAX 54Z
LRS BIG COUNTRY 37E
SSP BLAZE 5F

BW: 86; 205 day: 652; 365 day: 993.
Exposed to Remington Intimidator 82S -BPTG672989- May 20 to July 15/09 and also exposed to Prairie Wind Ritz 16U -BPG704445- July 16 to Aug 20/09.
Dam is LFE 158M. Full sister at Southpaw. 562R has a Rush daughter in the bred heifer pen.



82. SSP MS CASHUS 571R

BLACK POLLED PUREBRED FEMALE
BPG653499 SSP 571R 26 February 2005

BOZ REDCOAT
HSF CASHUS 62L BPTG622031
HSF VANESSA 45D

LBR AMAZE 13D
SSP AMAZING COLORS 132H 502071
SSP LADY DEUCE 607C



BW: 88; 205 day: 654; 365 day: 1086.
Exposed to Remington Intimidator 82S -BPTG672989- May 20 to July 15/09 and also exposed to Prairie Wind Ritz 16U -BPG704445- July 16 to Aug 20/09.
Great cow family. Goes back to the 607C cow. Has a really good RCCI 82S heifer calf in the keeper pen.

83. DTD MS REDO 573R

POLLED PUREBRED FEMALE
PG653526 DTD 573R 27 February 2005

NLC EXCALIBUR 36E
MUL MR NORM 713N PG604289
BOBB MS POL GATORODE 41G

IPU RED BODACIOUS 104H
DTD MS BO 78M PG606558
DTD MISS CASSY 129F

ER CAYENNE 554B
NLC B19 BERNADETTE
ER AMERICANA 537B
PATT CHANCE'S POLCHARM49C
FF BODACIOUS B900
CIRCLE S 7U
MR CAMP CASANOVA 17C
SSP MISS DESTINY 9P

BW: 90; 205 day: 656; 365 day: 917.
Exposed to Remington Intimidator 82S -BPTG672989- May 20 to July 15/09 and also exposed to Prairie Wind Ritz 16U -BPG704445- July 16 to Aug 20/09.
Dam is DTD 78M, sister to DTD 415P. Has a real good black blaze faced bull calf by RCCI 82S.

84. DTD MS CASHUS 587R

POLLED PUREBRED FEMALE
PG653527 DTD 587R 9 March 2005

BOZ REDCOAT
HSF CASHUS 62L BPTG622031
HSF VANESSA 45D

SSP EXAMINER 32E
DTD MS EXAMNEL 56J PG527331
CJS MISS BLACK LADY 3F

HERCULES 538P
BOZ RED LADY
DS POLLFLECK 809
MS HIGH BRED 53A
GREAT GUNS KARL 17C
SSP CHANTILLY LACE 432A
CHARLES PRIDE
RJV MISS RED LADY 1B

BW: 88; 205 day: 687; 365 day: 1020.
Exposed to Pioneer Red Sensation 2T -PG679589- May 7 to May 20/09 and also exposed to NAC Timon 43T -BPG686016- May 21 to Aug 20/09.
A good Cashus daughter. Has 2 bulls working commercially.

Twin Anchor 7 Simmentals

Twin Anchor 7 Simmentals

Guy, Christina, Taylor & Tanner Kelley

twinanc7@davincibb.net

RR 1, Site 20, Box 7

Sundre, AB TOM 1X0

403 638-3063 Cell: 403 638-6740

Located:

8.5 miles North of Sundre on Hwy 22



REFERENCE SIRES

SPRUCEBURN SAMSON 22S

FULLBLOOD MALE DLF 22S 19 January 2006
665473

OVERHALL HIVY
FGAF SELDOM 835L 550316
RAJ MS ARNOLD 21F

CAMUS FRONTIER
SPRUCEBURN PRISSY 22P 636346
HEMR LACE 2L



BW: 78; 205 day: 791; 365 day: 1077.

Samson was bred by Spruceburn Simmentals. We are very happy with the calving ease and color that Samson puts into his calves. It is very impressive to see the muscle and style he stamps on all of his offspring.

TWIN ANCHOR 7 SCOOTER 33S

FULLBLOOD MALE GUY 33S 19 January 2006
T670299

BHR DOORN G629E
SHAWACRES JAHARI 50L T559299
MISS SHAWACRES HEIDI 1H

MFL CHAMPLAIN 50C
SPJ HARMONY 34H 505646
LAKE ISLE MISS 30B



BW: 112; 205 day: 786; 365 day: 1324.

Scooter is an embryo calf we raised out of Jahari and our great donor cow SPJ Harmony 34H. We just love his calves, they have thickness, tremendous growth, pigment and a great disposition.

TWIN ANCHOR 7 ULTRA 9U

FULLBLOOD MALE GUY 9U 5 January 2008
713441

SHAWACRES JAHARI 50L
TWIN ANCHOR 7 SCOOTER 33S T670299
SPJ HARMONY 34H

DOUBLE BAR D LINCOLN
TWIN ANCHOR 7 MISSY 63M 589478
SU KLARA 36K

BHR DOORN G629E
MISS SHAWACRES HEIDI 1H
MFL CHAMPLAIN 50C
LAKE ISLE MISS 30B
PRL PORTERHOUSE REGENT
BAR NONE FENELLA
SU HUDSON 935H
MFL ELAINE 72E

BW: 98; 205 day: 703; 365 day: 1113.

We used Ultra as a clean up bull after Scooter was injured. He is out of a great little cow that always raises a big calf. Sired by Scooter, we hope he will follow in his footsteps!

KOP KLAUS 33K

POLLED FULLBLOOD MALE GOP 33K 26 January 2000
P540864

ECKHOLM 41053
EISENHERZ P397318
037131389

GREAT GUNS MOSES 50D
GREAT GUNS DIANA 59H 401975
GREAT GUNS RHAPSODIE 8D



BW: 104; 205 day: 934; 365 day: 1353.

We were lucky to have the opportunity to purchase Klaus at the Norton Dispersal Sale. We were searching for a good polled bull for our program and were sure impressed to see some of his outstanding females at the sale. He is still a walking herdsire here at Twin Anchor 7 at an impressive nine years of age! Semen available by private treaty.

100. MVS MISS FANCY 1J

FULLBLOOD FEMALE MVS 1J 19 January 1999
522837

BEL C&B WESTERN 2ND
GREAT GUNS MOSES 50D T338409
MISS KNIGHT 155S

BEL WESTERN UNION 2ND
MTV UELI 20G 390989
MTV NIKE



BW: 87.

Exposed to KOP Klaus 33K -P540864- from Mar 31/09 and preg checked safe to February. We purchased Fancy from Marty Vernon at the Roundup Sale. She and her dam were Grand Champion cow/calf pair at 4-H on Parade.

101. BLACK FOREST JULIANA

FULLBLOOD FEMALE BFC 12J 8 February 1999
507031

RHY MORITZ 82E
RIVERBEND GERICO 10G 392221
TIFFANY 1A

BEL C&B WESTERN 2ND
BLACK FOREST CHARLOTTE T279666
MISS SALLY

LAKI
RHY ZELKOVA 33Z
GREAT GUNS ROMNEFF 15Y
GREAT GUNS LITA 8Y
SIM-ROC C&B WESTERN
ADRIAN
DOR-MAUR SALVADOR 1A
ABW LADY PATRICIA 2F

BW: 94; 205 day: 664; 365 day: 905.

Exposed to Spruceburn Samson 22S -665473- from Apr 2/09 and preg checked safe to March.

A Black Forest cow that goes back to C & B Western.

Twin Anchor 7 Simmentals

102. BLACK FOREST JULIET

FULLBLOOD FEMALE BFC 13J 9 February 1999
507032

RHY MORITZ 82E
RIVERBEND GERICO 10G 392221
TIFFANY 1A

ABR SIR ARNOLDS IMAGE
YETTE'S IMAGE 274302
JLB WESTERN PROGRESS



BW: 96; 205 day: 713; 365 day: 1000.
Exposed to KOP Klaus 33K -P540864- from Mar 31/09 and preg checked safe to February.
Look at her pedigree! It is full of famous foundation bloodlines such as Laki, SH Romulus F53R and Sir Arnolds Image. It just confirms why she is such a great cow.

103. DFM JADE 913J

FULLBLOOD FEMALE DFM 913J 14 January 1999
T521925

ZAMUR
ZAMUTO 264714
SANDRA

BEL C&B WESTERN 2ND
DFM 40Y T215200
JSF FELICITE

ZARTER
ERNA
PLUTO
SELMA
SIM-ROC C&B WESTERN
ADRIAN
SV BAVARIAN 7C
JAY FARM ROLLI

BW: 98; 205 day: 590.
Exposed to Twin Anchor 7 Scooter 33S -T670299- Apr 2 - June 4/09 and also exposed to Twin Anchor 7 Ultra 9U -713441- from June 4/09. Preg checked safe to January.
FULL FLECKVIEH. Great cow out of Darrell Maronda's 40Y cow and Zamuto.

104. DFM 947J

FULLBLOOD FEMALE DFM 947J 7 February 1999
511780

SIR ARNOLD 809G
DFM RIDGE'S DAMON 447D T314454
CANADIAN RIDGE

ZAMUTO
J ANCHOR MISS 39F T364916
J ANCHOR 28A



BW: 81; 205 day: 654.
Exposed to Twin Anchor 7 Scooter 33S -T670299- Apr 2 - June 4/09 and also exposed to Twin Anchor 7 Ultra 9U -713441- from June 4/09. Preg checked safe to January.
FULL FLECKVIEH. Full Fleckvieh cow that really produces.

105. BLACK FOREST KOMTESSA

FULLBLOOD FEMALE BFC 1K 1 January 2000
T544626

HAXEN
HEXER 537824
ANJA

HARRY
UTA 539831
UTE



BW: 99; 205 day: 743; 365 day: 1021.
Exposed to Spruceburn Samson 22S -665473- Apr 2 - and preg checked safe to February.
FULL FLECKVIEH. A cow with a real outcross pedigree. Take a good look here!

106. BLACK FOREST KAYLA

FULLBLOOD FEMALE BFC 12K 16 February 2000
531736

HAXON
HAXENT 263035
PIPPI

BLACK FOREST EMPEROR
BLACK FOREST GOLDA 380227
BLACK FOREST YOLANDA



BW: 87; 205 day: 715.
Exposed to Spruceburn Samson 22S -665473- from Apr 2/09 and preg checked safe to January.
A Haxent cow that always brings home a top calf. One of our favorites.

107. BLACK FOREST KASSANDRA

FULLBLOOD FEMALE BFC 14K 25 February 2000
531741

ELCH
ELDORADO 397020
MUSTER

HAXENT
BLACK FOREST HERA 403067
BLACK FOREST CHARLOTTE

EGMONT
SALMA
METAXAS
MUCKL
HAXON
PIPPI
BEL C&B WESTERN 2ND
MISS SALLY

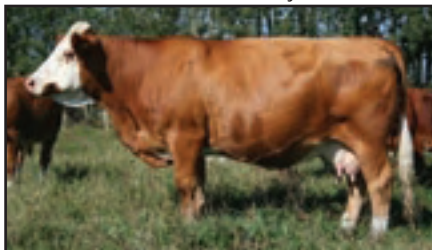
BW: 88; 205 day: 774.
Exposed to Twin Anchor 7 Scooter 33S -T670299- Apr 2 - June 4/09 and also exposed to Twin Anchor 7 Ultra 9U -713441- from June 4/09. Preg checked safe to January.
14K is out of Eldorado, a bull that throws a lot of growth into his calves.

108. RU-BENS KOURTNEY 16K

FULLBLOOD FEMALE BRB 16K 2 January 2000
549388

ELCH
ELDORADO 397020
MUSTER

HAXENT
LAZY H HOLLY 28H T415205
RHY BORONIA 61B



BW: 90; 205 day: 691.
Exposed to Twin Anchor 7 Scooter 33S -T670299- Apr 2 - June 4/09 and also exposed to Twin Anchor 7 Ultra 9U -713441- from June 4/09. Preg checked safe to January.
FULL FLECKVIEH. Kourtney is a super thick cow that produces eye catching stylish calves.

109. RU-BENS KONNIE 40K

FULLBLOOD FEMALE BRB 40K 17 February 2000
537962

ANCHOR "T" METRO 4E
KLONDIKE CLINT 54H 415615
KLONDIKE HILDA 4F

KLONDIKE EAGLE 59D
PINERIDGE FEATURE 374973
PINERIDGE FERNIE



BW: 92; 205 day: 638.
Exposed to Spruceburn Samson 22S -665473- from Apr 2/09 and preg checked safe to March.
FULL FLECKVIEH. One of our top full Fleckvieh cows with a tremendous pedigree.

Twin Anchor 7 Simmentals

110. SJWW STELLA FF66K

FULLBLOOD FEMALE SJWW 66K 1 February 2000
549435

GREAT GUNS SEGAL 16A
JACK PINE STYLE 8C 284394
GREAT GUNS LITA 8Y

BALTIMORE
SJWW MARIAH FF56H T504388
GREAT GUNS MITZI 11X



BW: 88; 205 day: 745; 365 day: 954.
Exposed to Twin Anchor 7 Scooter 33S -T670299- Apr 2 – June 4/09 and also exposed to Twin Anchor 7 Ultra 9U -713441- from June 4/09. Preg checked safe to March.
FULL FLECKVIEH. Stella comes from the Wolfe Fleckvieh and Jack Pine program. She is a great cow.

111. TWIN ANCHOR 7 LACE 24L

FULLBLOOD FEMALE GUY 24L 17 January 2001
566249

RHY MORITZ 82E
RIVERBEND GERICO 10G 392221
TIFFANY 1A

TRIPLE S P STROMER
BLACK FOREST AURORA 225502
BLACK FOREST SCARLET



BW: 102; 205 day: 602; 365 day: 994.
Exposed to KOP Klaus 33K -P540864- from Mar 31/09 and preg checked safe to February. Here is a nice package! Lace has a beautiful udder and is a consistent producer in our herd.

112. TWIN ANCHOR 7 LOYAL 25L

FULLBLOOD FEMALE GUY 25L 20 January 2001
566250

ELCH
ELDORADO 397020
MUSTER

RIVERBEND GERICO 10G
BLACK FOREST JULIANA 507031
BLACK FOREST CHARLOTTE



BW: 86; 205 day: 593; 365 day: 910.
Exposed to KOP Klaus 33K -P540864- from Mar 31/09 and preg checked safe to February. This cow has raised some of the top producing females in our herd.

113. TWIN ANCHOR 7 LILLY 28L

FULLBLOOD FEMALE GUY 28L 26 January 2001
566255

GREAT GUNS MOSES 50D
RICHMOND MR MOSES 5G T379535
JANCHOR MISS 27E

MFL ERWIN 9E
EAGLE-RIDGE 9J 528928
EAGLE-RIDGE 70G



BW: 82; 205 day: 603; 365 day: 884.
Exposed to KOP Klaus 33K -P540864- from Mar 31/09 and preg checked safe to March. Out of a great Eagle Ridge cow. Bred to our polled Klaus bull.

114. TWIN ANCHOR 7 MARNIE 57M

FULLBLOOD FEMALE GUY 57M 15 January 2002
589473

PRL PORTERHOUSE REGENT
DOUBLE BAR D LINCOLN 392284
BAR NONE FENELLA

GREAT GUNS MOSES 50D
MVS MISS FANCY 1J 522837
MTV UELI 20G



BW: 88; 205 day: 544; 365 day: 733.
Exposed to Spruceburn Samson 22S -665473- from Apr 2/09 and preg checked safe to March.
FULL FLECKVIEH. Marnie is out of MVS Fancy 1J, Lot 100.

115. TWIN ANCHOR 7 MAGGIE 61M

FULLBLOOD FEMALE GUY 61M 17 January 2002
589454

BEL C&B WESTERN 2ND
GREAT GUNS MOSES 50D T338409
MISS KNIGHT 155S

RIVERBEND GERICO 10G
BLACK FOREST JULIET 507032
YETTE'S IMAGE



BW: 104; 205 day: 621; 365 day: 775.
Exposed to Twin Anchor 7 Scooter 33S -T670299- Apr 2 – June 4/09 and also exposed to Twin Anchor 7 Ultra 9U -713441- from June 4/09. Preg checked safe to January. Maggie is out of Great Guns Moses, one of our favorite AI sires.

116. TWIN ANCHOR 7 MISSY 63M

FULLBLOOD FEMALE GUY 63M 21 January 2002
589478

PRL PORTERHOUSE REGENT
DOUBLE BAR D LINCOLN 392284
BAR NONE FENELLA

SU HUDSON 935H
SU KLARA 36K 536905
MFL ELAINE 72E

ROGANT
MS PRL NITE ANCHOR 087B
STEWART
BAR NONE FRITZIE
SU MR UNIVERSE 1992 26B
SU ARNOLD'S VERNA 935Y
HORAL
MFL ATTRACTION 2A

BW: 76; 205 day: 568; 365 day: 747.
Exposed to Twin Anchor 7 Scooter 33S -T670299- Apr 2 – June 4/09 and also exposed to Twin Anchor 7 Ultra 9U -713441- from June 4/09. Preg checked safe to March.
Wonderful maternal cow. Dam of reference sire Twin Anchor 7 Ultra 9U.

117. TWIN ANCHOR 7 MERCEDES

FULLBLOOD FEMALE GUY 69M 27 January 2002
589484

BAR NONE MAINSTREAM
EAGLE-RIDGE MR MAIN 45K 549778
BAR NONE HILMA

BLACK FOREST EMPEROR
BLACK FOREST HILLARY 403073
GNB ARVENA



BW: 88; 205 day: 648; 365 day: 827.
Exposed to Twin Anchor 7 Scooter 33S -T670299- Apr 2 – June 4/09 and also exposed to Twin Anchor 7 Ultra 9U -713441- from June 4/09. Preg checked safe to February. Mercedes is out of our herd bull, Eagle Ridge Mr. Main 45K. His heifers are just what we wanted to raise. Thick, deep and lots of rib.

Twin Anchor 7 Simmentals

118. TWIN ANCHOR 7 MELODY 72M

FULLBLOOD FEMALE GUY 72M 12 February 2002
589486

PRL PORTERHOUSE REGENT ROGANT
DOUBLE BAR D LINCOLN 392284 MS PRL NITE ANCHOR 087B
BAR NONE FENELLA STEWARD
MFL CHAMPLAIN 50C BAR NONE FRITZIE
SPJ HARMONY 34H 505646 MFL MEISTER 36Y
LAKE ISLE MISS 30B MFL BLUTE 44Y
KNIGHT MR T 255T
ANCHOR "T" BERTHA 115Y

BW: 90; 205 day: 662; 365 day: 816.
Exposed to KOP Klaus 33K -P540864- from Mar 31/09 and preg checked safe to February.
FULL FLECKVIEH. Melody's dam is SPJ Harmony 34H, our donor cow. Melody has progeny at Keato Meadows Simmentals and Chalk Hill Simmentals.

119. TWIN ANCHOR 7 MILLIE 74M

FULLBLOOD FEMALE GUY 74M 25 February 2002
589487

BAR NONE MAINSTREAM
EAGLE-RIDGE MR MAIN 45K 549778
BAR NONE HILMA
MFL ERWIN 9E
EAGLE-RIDGE 9J 528928
EAGLE-RIDGE 70G



BW: 102; 205 day: 638; 365 day: 836.
Exposed to KOP Klaus 33K -P540864- from Mar 31/09 and preg checked safe to January.
Millie 74M is another deep bodied Eagle Ridge 45K daughter. She produces the good ones.

120. TWIN ANCHOR 7 MAUVE 76M

FULLBLOOD FEMALE GUY 76M 14 March 2002
589488

BAR NONE MAINSTREAM
EAGLE-RIDGE MR MAIN 45K 549778
BAR NONE HILMA
GRINALTAS EXTRAORDINAIRE
SOUTH-HOLDEN EXTRO 52F6J 512975
SOUTH-HOLDEN POL BOLD 52F



BW: 98; 205 day: 687; 365 day: 858.
Exposed to Twin Anchor 7 Scooter 33S -T670299- Apr 2 - June 4/09 and also exposed to Twin Anchor 7 Ultra 9U -713441- from June 4/09. Preg checked safe to January.
FULL FLECKVIEH. Mauve 76M is one of two daughters in this sale out of FLEM 6J.

121. TWIN ANCHOR 7 MARGARITA

FULLBLOOD FEMALE GUY 77M 26 April 2002
589489

BAR NONE MAINSTREAM
EAGLE-RIDGE MR MAIN 45K 549778
BAR NONE HILMA
BLACK FOREST EMPEROR
BLACK FOREST HENNY 403074
BLACK FOREST EVITA



BW: 104; 205 day: 762; 365 day: 916.
Exposed to KOP Klaus 33K -P540864- from Mar 31/09 and preg checked safe to February.
Another good producing Eagle Ridge 45K daughter. Lots of milk packaged in a nice square, compact udder.

122. TWIN ANCHOR 7 MATTIE 78M

FULLBLOOD FEMALE GUY 78M 26 August 2002
611852

BAR NONE MAINSTREAM
EAGLE-RIDGE MR MAIN 45K 549778
BAR NONE HILMA
ABR SIR ARNOLDS IMAGE
YETTE'S IMAGE 274302
JLB WESTERN PROGRESS



BW: 94; 205 day: 581; 365 day: 851.
Exposed to KOP Klaus 33K -P540864- from Mar 31/09 and preg checked safe to March.
Mattie goes back to Sir Arnold's Image in her pedigree. A real heifer maker with loads of depth.

123. TWIN ANCHOR 7 NIKITA 13N

FULLBLOOD FEMALE GUY 13N 16 January 2003
611858

PRL PORTERHOUSE REGENT
DOUBLE BAR D LINCOLN 392284
BAR NONE FENELLA
BLUCON NEFF'S GOLDMINER
BLUCON JAMI 538855
BLUCON KARMEN



BW: 102; 205 day: 632; 365 day: 1007.
Exposed to KOP Klaus 33K -P540864- from Mar 31/09 and preg checked safe to February.
FULL FLECKVIEH. Nikita is a smaller framed Lincoln daughter. She has a perfect udder and seems to cross well with any sire.

124. BLACK FOREST PRIMIA

FULLBLOOD FEMALE BFC 2P 19 February 2004
613016

BAR 5 KALGERY 402J
LAZY 8 KALGERY 2M 586222
LAZY-8 MS PAULI DUX 9D
HEXER
BLACK FOREST KOMTESSA T544626
UTA



BW: 89; 205 day: 723.
Exposed to KOP Klaus 33K -P540864- from Mar 31/09 and preg checked safe to February.
FULL FLECKVIEH. This cow has some unique bloodlines! She would make a great addition to

125. TWIN ANCHOR 7 PETRA 9P

FULLBLOOD FEMALE GUY 9P 12 January 2004
629788

ANCHOR "T" METRO 4E
ANCHOR "T" IMPACT 2H T415160
ANCHOR "T" HELGA 10Y
EAGLE-RIDGE MR MAIN 45K
TWIN ANCHOR 7 MERCEDES 589484
BLACK FOREST HILLARY



BW: 88; 205 day: 722; 365 day: 1129.
Exposed to Twin Anchor 7 Scooter 33S -T670299- Apr 2 - June 4/09 and also exposed to Twin Anchor 7 Ultra 9U -713441- from June 4/09. Preg checked safe to February.
Petra's sire is the well known Anchor T Impact herd bull that walked the pastures of Eagle Ridge Simmentals. She is a top producer.

Twin Anchor 7 Simmentals

126. TWIN ANCHOR 7 PATTY 25P

POLLED PUREBRED FEMALE GUY 25P 23 January 2004
PG629801

PPSR COAL BLACK 65F
LRS RED REALITY 33J PG548916
LRS MS PREFD STOCK 715G

ANCHOR *T* METRO 4E
TWIN ANCHOR 7 LORIE 27L G566253
TWIN ANCHOR 7 14J



BW: 84; 205 day: 602; 365 day: 885.
Exposed to Spruceburn Samson 22S -665473- from Apr 2/09 and preg checked safe to February.
A correct cow with lots of power. She raises a big stylish calf each year.

127. TWIN ANCHOR 7 PENELOPE

FULLBLOOD FEMALE GUY 33P 29 January 2004
629824

BAR NONE MAINSTREAM
EAGLE-RIDGE MR MAIN 45K 549778
BAR NONE HILMA

GRINALTA'S EXTRAORDINAIRE
SOUTH-HOLDEN EXTRO 52F6J 512975
SOUTH-HOLDEN POL BOLD 52F



BW: 88; 205 day: 742; 365 day: 1121.
Exposed to KOP Klaus 33K -P540864- from Mar 31/09 and preg checked safe to February.
FULL FLECKVIEH. A full Fleckvieh Mainstream daughter. You can't go wrong with a pedigree like this!

128. TWIN ANCHOR 7 PIPPA 36P

FULLBLOOD FEMALE GUY 36P 31 January 2004
629826

BAR NONE MAINSTREAM
EAGLE-RIDGE MR MAIN 45K 549778
BAR NONE HILMA

ARNOLD'S HIGH FIVE
SU KORAL 23K 536856
SU HANNAH 802H



BW: 94; 205 day: 716; 365 day: 1062.
Exposed to Twin Anchor 7 Scooter 33S -T670299- Apr 2 - June 4/09 and also exposed to Twin Anchor 7 Ultra 9U -713441- from June 4/09. Preg checked safe to February.
A real deep bodied cow that produces darker colored calves.

129. TWIN ANCHOR 7 PANDORA 37P

FULLBLOOD FEMALE GUY 37P 31 January 2004
629827

BAR NONE MAINSTREAM
EAGLE-RIDGE MR MAIN 45K 549778
BAR NONE HILMA

TRIPLE S P STROMER
BLACK FOREST AURORA 225502
BLACK FOREST SCARLET



BW: 98; 205 day: 547; 365 day: 877.
Exposed to KOP Klaus 33K -P540864- from Mar 31/09 and preg checked safe to March.
Pandora is out of a favorite Triple SP Stromer Black Forest cow we purchased. She has a great pedigree and is a reliable producer.

130. TWIN ANCHOR 7 PROMISE 40P

FULLBLOOD FEMALE GUY 40P 3 February 2004
629828

BAR NONE MAINSTREAM
EAGLE-RIDGE MR MAIN 45K 549778
BAR NONE HILMA

MRLN RODEN
TWIN ANCHOR 7 LOUISE 32L 566262
MVS MISS FANCY 1J

NDM MUSKEL 14W
BAR NONE FLORENCE
TAKAR
BAR NONE HAZELINE
MRLN ROGAR
RIA
GREAT GUNS MOSES 50D
MTV UELI 20G

BW: 82; 205 day: 657; 365 day: 991.
Exposed to Twin Anchor 7 Scooter 33S -T670299- Apr 2 - June 4/09 and also exposed to Twin Anchor 7 Ultra 9U -713441- from June 4/09. Preg checked safe to February.
FULL FLECKVIEH. Another good Mr. Main daughter bred to Scooter - should be a great cross!

131. TWIN ANCHOR 7 POLARIS 42P

FULLBLOOD FEMALE GUY 42P 6 February 2004
629829

BAR NONE MAINSTREAM
EAGLE-RIDGE MR MAIN 45K 549778
BAR NONE HILMA

BERND
TWIN ANCHOR 7 LEAH 31L 566260
BLACK FOREST JUANITA



BW: 108; 205 day: 751; 365 day: 1123.
Exposed to KOP Klaus 33K -P540864- from Mar 31/09 and preg checked safe to February.
Polaris is one of our favorites. She has loads of capacity and brings home a great calf each fall. Take a look at this one!

132. TWIN ANCHOR 7 PROTEGE 44P

FULLBLOOD FEMALE GUY 44P 7 February 2004
629805

BAR NONE MAINSTREAM
EAGLE-RIDGE MR MAIN 45K 549778
BAR NONE HILMA

RICHMOND MR HETAL 74J
SOUTH SEVEN LOTUS 61L 551966
SOUTH SEVEN MISS FERDI47H



BW: 70; 205 day: 615; 365 day: 991.
Exposed to Twin Anchor 7 Scooter 33S -T670299- Apr 2 - June 4/09 and also exposed to Twin Anchor 7 Ultra 9U -713441- from June 4/09. Preg checked safe to February.
FULL FLECKVIEH. Protege is out of a full Fleckvieh cow we purchased from South Seven. She has a nice tidy udder and raises a good calf.

133. TWIN ANCHOR 7 PRISCILLA

FULLBLOOD FEMALE GUY 56P 22 February 2004
629809

BAR NONE MAINSTREAM
EAGLE-RIDGE MR MAIN 45K 549778
BAR NONE HILMA

BEL C&B WESTERN 2ND
BLACK FOREST BRITTA T245806
MISS SALLY

NDM MUSKEL 14W
BAR NONE FLORENCE
TAKAR
BAR NONE HAZELINE
SIM-ROC C&B WESTERN
ADRIAN
DOR-MAUR SALVADOR 1A
ABW LADY PATRICIA 2F

BW: 86; 205 day: 711; 365 day: 1037.
Exposed to Twin Anchor 7 Scooter 33S -T670299- Apr 2 - June 4/09 and also exposed to Twin Anchor 7 Ultra 9U -713441- from June 4/09. Preg checked safe to February.
A good cow with a pedigree consisting of great foundation genetics.

Twin Anchor 7 Simmentals

134. TWIN ANCHOR 7 PHYLLIS 58P

FULLBLOOD FEMALE GUY 58P 22 February 2004
629810

BAR NONE MAINSTREAM
EAGLE-RIDGE MR MAIN 45K 549778
BAR NONE HILMA

RICHMOND MR MOSES 5G
TWIN ANCHOR 7 LILLY 28L 566255
EAGLE-RIDGE 9J

BW: 76; 205 day: 651; 365 day: 867.

Exposed to KOP Klaus 33K -P540864- from Mar 31/09 and preg checked safe to January. Phyllis is another great daughter from our Eagle Ridge Mr. Main sire. She should cross nicely with Klaus.



135. TWIN ANCHOR 7 PATTY 64P

FULLBLOOD FEMALE GUY 64P 3 March 2004
629814

BAR NONE MAINSTREAM
EAGLE-RIDGE MR MAIN 45K 549778
BAR NONE HILMA

JACK PINE STYLE 8C
SJWW STELLA FF66K 549435
SJWW MARIAH FF56H

NDM MUSKEL 14W
BAR NONE FLORENCE
TAKAR
BAR NONE HAZELINE
GREAT GUNS SEGAL 16A
GREAT GUNS LITA 8Y
BALTIMORE
GREAT GUNS MITZI 11X

BW: 94; 205 day: 714; 365 day: 1025.

Exposed to Twin Anchor 7 Scooter 33S -T670299- Apr 2 - June 4/09 and also exposed to Twin Anchor 7 Ultra 9U -713441- from June 4/09. Preg checked safe to February. FULL FLECKVIEH. Patty's pedigree is filled with proven bloodlines. She will have a great Scooter calf.

136. TWIN ANCHOR 7 RACHELLE 1R

FULLBLOOD FEMALE GUY 1R 1 January 2005
650659

MUTIG
ARNOLD'S HIGH FIVE 396036
MS DD&E MOVING ON 28C

TONI
HEMR EMMY 16K 535675
MRLN EMILY

BW: 90; 205 day: 613; 365 day: 946.

Exposed to KOP Klaus 33K -P540864- from Mar 31/09 and preg checked safe to February. FULL FLECKVIEH. We have had good success crossing 1R with our polled Klaus bull.



137. TWIN ANCHOR 7 ROXIE 9R

POLLED PUREBRED FEMALE GUY 9R 8 January 2005
PG650661

PPSR COAL BLACK 65F
LRS RED REALITY 33J PG548916
LRS MS PREFD STOCK 715G

EAGLE-RIDGE MR MAIN 45K
TWIN ANCHOR 7 NALA 18N G611861
SPRUCEBURN GENTLE 17G

BW: 94; 205 day: 682; 365 day: 1015.

Exposed to Spruceburn Samson 22S -665473- from Apr 2/09 and preg checked safe to January.

Here is a real powerhouse cow. A deep bodied cow with loads of capacity!



138. SHAWACRES RENE 16R

FULLBLOOD FEMALE JXJ 16R 21 January 2005
651983

DAN-JACO BENZ 78
BAR 5 SA BENZ 415L T559543
WISP-WILL FIONA

BHR DOORN G629E
SHAWACRES MISS NOLA 5N 595376
MFL GRETA 3G

BW: 82; 205 day: 629.

Exposed to Twin Anchor 7 Scooter 33S -T670299- Apr 2 - June 4/09 and also exposed to Twin Anchor 7 Ultra 9U -713441- from June 4/09. Preg checked safe to February. FULL FLECKVIEH. We purchased Rene at the Fleck Fest sale and were sure happy that we did! As a first calver, she raised twin bull calves on her own that both ended up in our bull pen!



139. TWIN ANCHOR 7 ROSIE 23R

FULLBLOOD FEMALE GUY 23R 19 January 2005
650669

BAR NONE MAINSTREAM
EAGLE-RIDGE MR MAIN 45K 549778
BAR NONE HILMA

RIVERBEND GERICO 10G
BLACK FOREST JULIET 507032
YETTE'S IMAGE

NDM MUSKEL 14W
BAR NONE FLORENCE
TAKAR
BAR NONE HAZELINE
RHY MORITZ 82E
TIFFANY 1A
ABR SIR ARNOLDS IMAGE
JLB WESTERN PROGRESS

BW: 102; 205 day: 588; 365 day: 868.

Exposed to Twin Anchor 7 Scooter 33S -T670299- Apr 2 - June 4/09 and also exposed to Twin Anchor 7 Ultra 9U -713441- from June 4/09. Preg checked safe to January. Here is a stylish Eagle Ridge Mr. Main daughter with a nice square udder.

140. TWIN ANCHOR 7 REBECCA 29R

FULLBLOOD FEMALE GUY 29R 22 January 2005
650671

GIDSCO APPOLLO 3F
MVS GUNNER 1N 605215
MTV CINDI 3K

ELDORADO
TWIN ANCHOR 7 LOYAL 25L 566250
BLACK FOREST JULIANA

ANTONIUS
MFL BRENDA 65B
MRLN RODEN
BEL WENDY 02H
ELCH
MUSTER
RIVERBEND GERICO 10G
BLACK FOREST CHARLOTTE

BW: 88; 205 day: 666; 365 day: 952.

Exposed to KOP Klaus 33K -P540864- from Mar 31/09 and preg checked safe to February. FULL FLECKVIEH. A smaller framed cow that is a consistent dark red color producer.

141. TWIN ANCHOR 7 RACHEL 48R

FULLBLOOD FEMALE GUY 48R 9 February 2005
653129

BAR NONE MAINSTREAM
EAGLE-RIDGE MR MAIN 45K 549778
BAR NONE HILMA

JACK PINE STYLE 8C
SJWW STELLA FF66K 549435
SJWW MARIAH FF56H

BW: 100; 205 day: 654; 365 day: 961.

Exposed to KOP Klaus 33K -P540864- from Mar 31/09 and preg checked safe to January. FULL FLECKVIEH. Rachel has been a consistent, trouble free producer for us. Take a look at her pedigree and you will see why!



Twin Anchor 7 Simmentals

142. TWIN ANCHOR 7 RIKKI 59R

FULLBLOOD FEMALE
653131

GUY 59R

23 February 2005

BAR NONE MAINSTREAM
EAGLE-RIDGE MR MAIN 45K 549778
BAR NONE HILMA

NDM MUSKEL 14W
BAR NONE FLORENCE
TAKAR
BAR NONE HAZELINE
PRL PORTERHOUSE REGENT
BAR NONE FENELLA
GREAT GUNS MOSES 50D
MTV UELI 20G

DOUBLE BAR D LINCOLN
TWIN ANCHOR 7 MARNIE 57M 589473
MVS MISS FANCY 1J

BW: 98; 205 day: 687; 365 day: 921.

Exposed to KOP Klaus 33K -P540864- from Mar 31/09 and preg checked safe to January.
FULL FLECKVIEH.

143. TWIN ANCHOR 7 RUTH 68R

FULLBLOOD FEMALE
653134

GUY 68R

16 March 2005

ELDORADO
TWIN ANCHOR 7 NEWSTAR 7N 611854
TWIN ANCHOR 7 LEXUS 20L

EAGLE-RIDGE MR MAIN 45K
TWIN ANCHOR 7 NATALIE 50N 629821
RU-BENS KONNIE 40K

BW: 92; 205 day: 680; 365 day: 1013.

Exposed to Twin Anchor 7 Scooter 33S -T670299- Apr 2 - June 4/09 and also exposed to Twin Anchor 7 Ultra 9U -713441- from June 4/09. Preg checked safe to February.
FULL FLECKVIEH.



144. TWIN ANCHOR 7 SPICE 20S

FULLBLOOD FEMALE
669857

GUY 20S

13 January 2006

GIDSCO APPOLLO 3F
MVS GUNNER 1N 605215
MTV CINDI 3K



BLUCON NEFF'S GOLDMINER
BLUCON JAMI 538855
BLUCON KARMEN

BW: 90; 205 day: 592; 365 day: 746.

Exposed to Twin Anchor 7 Scooter 33S -T670299- Apr 2 - June 4/09 and also exposed to Twin Anchor 7 Ultra 9U -713441- from June 4/09. Preg checked safe to January.
FULL FLECKVIEH. A nice cow out of our herdsire MVS Gunner. Gunner is now the main heifer sire at Wolfe Farms, Tony and Lisa Wolfe.

145. TWIN ANCHOR 7 SALLY 26S

FULLBLOOD FEMALE
669851

GUY 26S

15 January 2006

BAR NONE MAINSTREAM
EAGLE-RIDGE MR MAIN 45K 549778
BAR NONE HILMA

NDM MUSKEL 14W
BAR NONE FLORENCE
TAKAR
BAR NONE HAZELINE
TAKT
RAUT
MRLN GOLD
MRLN ELISE

TONI
HEMR EMMY 16K 535675
MRLN EMILY

BW: 88; 205 day: 642; 365 day: 837.

Exposed to KOP Klaus 33K -P540864- from Mar 31/09 and preg checked safe to February.
FULL FLECKVIEH. This is a daughter of an excellent cow we purchased from Heimstra's. Lots of milk in her pedigree!

146. TWIN ANCHOR 7 SATIN 36S

FULLBLOOD FEMALE
671288

GUY 36S

22 January 2006

GIDSCO APPOLLO 3F
MVS GUNNER 1N 605215
MTV CINDI 3K



EAGLE-RIDGE MR MAIN 45K
TWIN ANCHOR 7 PENELOPE 629824
SOUTH-HOLDEN EXTRO 52F6J

BW: 96; 205 day: 596; 365 day: 780.

Exposed to Twin Anchor 7 Scooter 33S -T670299- Apr 2 - June 4/09 and also exposed to Twin Anchor 7 Ultra 9U -713441- from June 4/09. Preg checked safe to January.
FULL FLECKVIEH. Another easy calving Gunner daughter. She has good feet and a great udder.

147. TWIN ANCHOR 7 SELECT 80S

FULLBLOOD FEMALE
669852

GUY 80S

26 February 2006

BAR NONE MAINSTREAM
EAGLE-RIDGE MR MAIN 45K 549778
BAR NONE HILMA



MFL CHAMPLAIN 50C
SPJ HARMONY 34H 505646
LAKE ISLE MISS 30B

BW: 108; 205 day: 666; 365 day: 839.

Exposed to Spruceburn Samson 22S -665473- from Apr 2/09 and preg checked safe to March.
FULL FLECKVIEH. Select is out of a favorite flush cow of ours. She should raise some excellent calves.

148. TWIN ANCHOR 7 TEAL 13T

FULLBLOOD FEMALE
689454

GUY 13T

14 January 2007

KYKSO HAPED
BHR DRACO SA 628N T621436
AI-AI RINA



ELDORADO
RU-BENS KOURTNEY 16K 549388
LAZY H HOLLY 28H

BW: 100; 205 day: 639; 365 day: 973.

Exposed to Twin Anchor 7 Scooter 33S -T670299- Apr 2 - June 4/09 and also exposed to Twin Anchor 7 Ultra 9U -713441- from June 4/09. Preg checked safe to February.
FULL FLECKVIEH. This is an outstanding cow. She has a unique pedigree and is sure to be a top producer in your herd.

149. TWIN ANCHOR 7 TANYA 16T

FULLBLOOD FEMALE
689455

GUY 16T

15 January 2007

GIDSCO APPOLLO 3F
MVS GUNNER 1N 605215
MTV CINDI 3K

ANTONIUS
MFL BRENDA 65B
MRLN RODEN
BEL WENDY 02H
ELDORADO
TWIN ANCHOR 7 LEXUS 20L
EAGLE-RIDGE MR MAIN 45K
RU-BENS KONNIE 40K

TWIN ANCHOR 7 NEWSTAR 7N
TWIN ANCHOR 7 RUTH 68R 653134
TWIN ANCHOR 7 NATALIE 50N

BW: 82; 205 day: 734; 365 day: 953.

Exposed to KOP Klaus 33K -P540864- from Mar 31/09 and preg checked safe to March.
FULL FLECKVIEH. Tanya is a good milking female with great conformation.

Twin Anchor 7 Simmentals / Graf's Nu-Horizon Simmentals

150. TWIN ANCHOR 7 TANNIS 75T

FULLBLOOD FEMALE
689469

GUY 75T

19 February 2007

GIDSCO APPOLLO 3F
MVS GUNNER 1N 605215
MTV CINDI 3K

EAGLE-RIDGE MR MAIN 45K
TWIN ANCHOR 7 MARGARITA 589489
BLACK FOREST HENNY



BW: 98; 205 day: 639; 365 day: 921.

Exposed to KOP Klaus 33K -P540864- from Mar 31/09 and preg checked safe to March.
Tannis is a structurally correct young cow with a great future. She has a perfect udder and raises a nice calf.

151. TWIN ANCHOR 7 TOPAZ 80T

FULLBLOOD FEMALE
689472

GUY 80T

23 February 2007

BAR NONE MAINSTREAM
EAGLE-RIDGE MR MAIN 45K 549778
BAR NONE HILMA

LAZY 8 KALGERY 2M
BLACK FOREST PRIMIA 613016
BLACK FOREST KOMTESSA

NDM MUSKEL 14W
BAR NONE FLORENCE
TAKAR
BAR NONE HAZELINE
BAR 5 KALGERY 402J
LAZY-8 MS PAULI DUX 9D
HEXER
UTA

BW: 86; 205 day: 691; 365 day: 928.

Exposed to Spruceburn Samson 22S -665473- from Apr 2/09 and preg checked safe to March.

FULL FLECKVIEH. Topaz is a good young cow with lots of potential.

Graf's Nu-Horizon Simmentals

Graf's Nu-Horizon Simmentals

Tracy Graf

for information contact:
Terry & Debbie Skoretz
SKOR Simmentals
780 384-2189 cell: 780 385-2027
email: skors@telus.net

Herd Health program

Cows		
Bovi-Shield Gold FP VL5	Vision 8 with Somnus	Jencine
Calves		
Bovi-Shield Gold FP VL5	Spring Turnout Vision 8 with Somnus	Once PMPH
At Weaning the calves receive the below shots which are boosted approximately 21 days later.		
Bovi-Shield Gold Vitamin AD (given only once)	Vision 8 with Somnus	Once PMPH

160. NUH MS RIGHT TIME 507U

POLLED PUREBRED FEMALE
PG712091

NUH 507U

9 January 2008

DS BLACK ZINGER 141B
BH RIGHT TIME 520E PTG401225
HF GFI QUEEN OF DENIAL C42

NUH BOLD ZIMA 1J
NUH MISS BOLD HORIZON 54P PG635520
NUH MS HORIZON 76H



BW: 87.

AI'd to TNT Gunner N208 -PG676236- on Apr 2/09. No exposure.

161. NUH MS FREEDOM 508U

POLLED PUREBRED FEMALE
PG712092

NUH 508U

10 January 2008

BH TRACKER 998J
THSF FREEDOM 300N PTG634923
SAFN MISS ZING 02H

NUG JU JUBE 31J
NUH MS RED JUBE 19P PG635517
GTC MS 56K

LRS PREFERRED STOCK 370C
699F
SAC JET TOP 2D
SAC MISS ZING 88E
BBS ZIMA D55
MISS NUG 1X
MFL NU-MILLENNIUM 62F
GTC CAMEO 2F

BW: 91.

AI'd to TNT Gunner N208 -PG676236- on Mar 26/09. No exposure.

162. NUH MS FREEDOM 511U

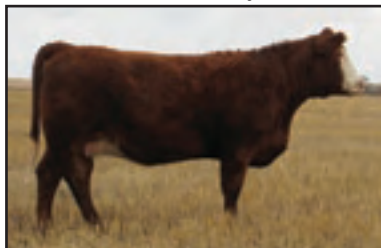
POLLED PUREBRED FEMALE
PG712093

NUH 511U

12 January 2008

BH TRACKER 998J
THSF FREEDOM 300N PTG634923
SAFN MISS ZING 02H

CZAR MR BLACK KNIGHT 74J
NUH MISS HORIZON 39L G577148
NUH MS 26J



BW: 90.

AI'd to CNS Dream On L186 -BPTG632589- on Apr 1/09. No exposure.

163. NUH MS QUEST 513U

POLLED PUREBRED FEMALE
PG712094

NUH 513U

13 January 2008

STF MONTANA BLACK KF25
STF STARQUEST N114 PTG616507
STF LEONA L260

LCHMN BODYBUILDER 7303F
NUH MS RED BUILDER 516R PG655068
NUH MISS 8L



BW: 76.

AI'd to TNT Gunner N208 -PG676236- on Apr 20/09. No exposure.

Graf's Nu-Horizon Simmentals

164. NUH MS CROCKET

POLLED PUREBRED FEMALE
PG712095

NUH 523U 28 January 2008

KENCOMF POWERLINE 204L
LBR CROCKET R81 PTG671306
LBR NIGHT DREAM M22

NUH BOLD ZIMA 1J
GTC MISS 48M G598847
GTC MS 67K



BW: 103.
AI'd to TNT Gunner N208 -PG676236- on Apr 2/09. No exposure.

165. NUH MS DYNAMITE 505T

POLLED PUREBRED FEMALE
PG696782

NUH 505T 5 January 2007

RW BOMBER 8H
TNT DYNAMITE BLACK L137 BPG578230
OPPS WIS GM2

LGW BLACK PREMINITION 5D
NUH MISS PREMINITION 5N BG617419
GTC TRACY 60H

PTL CUTTING EDGE D209
BABS THE BLACK BOMBER
LRS PREFERRED STOCK 370C
OPPS EXTRABLK BLAZE Y024
RED PEPPER
LL&L BLACK BEAUTY
SKORS MR DUSTY 1E
GTC MS EXTRA 48C

BW: 92.
AI'd to TNT Top Gun R244 -PG654937- on Mar 24/09. Exposed to Skors Red Fullback 192U -PG702086- May 2 - June 6/09.

166. NUH MS RED DREAM 515T

POLLED PUREBRED FEMALE
PG696767

NUH 515T 9 January 2007

NICHOLS BLK DESTINY G151
CNS DREAM ON L186 BPTG632589
CNS SHEEZA DREAM K107W

PELTONS POWERCAT 344G
NUH MISS POWERCAT 24N PG617425
NUG 15K



BW: 76.
AI'd to TNT Top Gun R244 -PG654937- on Apr 14/09. Exposed to Skors Red Fullback 192U -PG702086- May 2 - June 6/09.

167. NUH MS RED BUILDER 529T

POLLED PUREBRED FEMALE
PG696771

NUH 529T 19 January 2007

3C WALLY C240 BLK
LCHMN BODYBUILDER 7303F PG502869
LSF MOMENTO D8

MFL NU-MILLENNIUM 62F
NUH MS 29J 530955
NUH MS TAZ 72F

EMMONS BLACK HERCULES
3C CROCUS 9278 BL
LEACHMAN RED BALDY 438W
LBR B-248
MFL HOFFMAN 69D
MFL CINDY 8C
NUH TAZ 20D
NUH SATIN 2B

BW: 95.
AI'd to LBR Crocket R81 -PTG671306- on Mar 24/09. Exposed to Skors Red Fullback 192U -PG702086- May 2 - June 6/09.

A lot: polled Purebred female, NUH Ms Gunner 514W, NUH 514W, Jan 11/09, by TNT Gunner N208 PG676236, BW: 76.

168. NUH HORIZON 556T

POLLED PUREBRED FEMALE
PG696762

NUH 556T 14 February 2007

WHEATLAND BULL 131L
WHEATLAND BULL 445P BPG622092
MISS WHEATLAND 550E

NUG JU JUBE 31J
NUH JUJUBE 17P PG635515
NUH 71K



BW: 89.
AI'd to TNT Top Gun R244 -PG654937- on Apr 9/09. Exposed to Skors Red Fullback 192U -PG702086- May 2 - June 6/09.

169. NUH MS POWERCAT 506S

POLLED PUREBRED FEMALE
PG665247

NUH 506S 5 January 2006

NLC 64Y TOMCAT
PELTONS POWERCAT 344G PTG505105
COTTONWOOD ENHANCED

MFL NU-MILLENNIUM 62F
NUH MS 28J 530953
NUH MS TAZ 72F



BW: 89; 205 day: 704; 365 day: 994.
AI'd to Lchmn Bodybuilder 7303F -PG502869- on Mar 23/09. Exposed to Skors Red Fullback 192U -PG702086- May 2 - June 6/09.

A lot: polled Purebred Female, NUH Ms Top Gun 501W, NUH 501W, Jan 2/09, by TNT Top Gun R244, BW: 78.

170. NUH MS GOODNUFF 507S

POLLED PUREBRED FEMALE
PG665249

NUH 507S 6 January 2006

NLC 64Y TOMCAT
NLC GOOD A NUFF 33G PG500946
NLC A03 AVALINE

BBS ZIMA D55
NUH 2K PG561162
BIG ROCK TWINKLES 6D



BW: 106; 205 day: 641; 365 day: 950.
AI'd to TNT Top Gun R244 -PG654937- on Apr 8/09. Exposed to Skors Red Fullback 192U -PG702086- May 2 - June 6/09.

A lot: polled Purebred female, NUH Ms Right 523W, NUH 523W, Jan 19/09, by BH Right Time 520E PTG401225, BW: 89.

171. NUH DREAM GIRL 518S

POLLED PUREBRED FEMALE
PG665246

NUH 518S 13 January 2006

NICHOLS BLK DESTINY G151
CNS DREAM ON L186 BPTG632589
CNS SHEEZA DREAM K107W

PELTONS POWERCAT 344G
NUH MISS POWERCAT 24N PG617425
NUG 15K



BW: 84; 205 day: 638; 365 day: 921.
AI'd to Wheatland Red Ace 747T -PTG678327- on Apr 5/09. Exposed to Skors Red Fullback 192U -PG702086- May 2 - June 6/09.

A lot: polled Purebred female, NUH Ms Ruby 504W, NUH 504W, Jan 3/09, by TNT Top Gun R244 PG654937, BW 86.

Graf's Nu-Horizon Simmentals

172. NUH MS REDCAT 533S

POLLED PUREBRED FEMALE NUH 533S 20 January 2006
PG665250

NLC 64Y TOMCAT
PELTONS POWERCAT 344G PTG505105
COTTONWOOD ENHANCED

DAY TWELVE OCLOCK HIGH
GTC MS 5J 530976
GTC ROYAL LILY 2C



BW: 94; 205 day: 654; 365 day: 953.
AI'd to STF Starquest N114 -PTG616507- on Apr 8/09. Exposed to Skors Red Fullback 192U -PG702086- May 2 - June 6/09.

173. NUH MS AMERICA 536S

POLLED PUREBRED FEMALE NUH 536S 21 January 2006
PG665248

BLACK MAX
ER AMERICANA 537B PTG293404
ER MISS REDLINE 63T

MFL NU-MILLENNIUM 62F
NUH 64K 561180
NUH MS HORIZON 92E

PERFORMER
MISS NICK 175L
HERCULES 538P
ER 116L
MFL HOFFMAN 69D
MFL CINDY 8C
NUH EXTRA FAME 54C
NUH MS HORIZON 85C

BW: 91; 205 day: 686; 365 day: 947.
Exposed to Skors Red Fullback 192U -PG702086- May 2 - June 6/09 and observed bred May 14/09.

174. NUH MS RED QUEST 540S

POLLED PUREBRED FEMALE NUH 540S 24 January 2006
PG665245

STF MONTANA BLACK KF25
STF STARQUEST N114 PTG616507
STF LEONA L260

BH RIGHT TIME 520E
NUH MISS 8L PG576734
NUH MS HORIZON 46H



BW: 104; 205 day: 707; 365 day: 985.
AI'd to LBR Crocket R81 -PTG671306- on Apr 13 and May 1/09. Exposed to Skors Red Fullback 192U -PG702086- May 2 - June 6/09 and observed bred May 12/09.

175. NUH MS MICKEY 503R

POLLED PUREBRED FEMALE NUH 503R 3 January 2005
PG655065

MRE KIT KAT 28K
MRE MICKEY KAT 4M PG585829
MRE KAYE 12K

BGS CHAIRMAN 38B
NUH MS CHAIRMAN 25F 381474
NUH MS ROYAL RED 44D



BW: 94; 205 day: 720; 365 day: 1022.
AI'd to LBR Crocket R81
-PTG671306- on Apr 30/09. Exposed to Skors Dynamic 76S May 3 - May 30/09.
A lot: polled Purebred female, NUH Ms Caesar 525W, NUH 525W, Jan 20/09, by Ankonian Red Caesar PT670682, BW: 92.

176. NUH MS BODYBUILDER 506R

POLLED PUREBRED FEMALE NUH 506R 3 January 2005
PG655067

3C WALLY C240 BLK
LCHMN BODYBUILDER 7303F PG502869
LSF MOMENTO D8

MR DUSTY DIGNIFIED 10P
NUH MS DUSTY 12G 501069
MISS WESTERLEA WINNIE 23C

EMMONS BLACK HERCULES
3C CROCUS 9278 BL
LEACHMAN RED BALDY 438W
LBR B-248
BAR 5 DIGNIFIED 526K
MISS INDIANA
OKT NIBS 1A
TBS FERBIE 4A

BW: 72; 205 day: 539; 365 day: 773.
AI'd to TNT Gunner N208 -PG676236- on Apr 16/09. Exposed to Skors Encore 250T -PG684441- May 12 - June 1/09.

177. NUH MS RED BUILDER 516R

POLLED PUREBRED FEMALE NUH 516R 7 January 2005
PG655068

3C WALLY C240 BLK
LCHMN BODYBUILDER 7303F PG502869
LSF MOMENTO D8

BH RIGHT TIME 520E
NUH MISS 8L PG576734
NUH MS HORIZON 46H



BW: 108; 205 day: 684; 365 day: 1046.
AI'd to TNT Gunner N208 -PG676236- on Mar 31/09. Exposed to Skors Dynamic 76S -BPG665326- May 3 - May 30/09.
A lot: polled Purebred female, NUH Ms Crocket 526W, NUH 526W, Jan 21/09, by LBR Crocket R81 PTG671306, BW: 105.

178. NUH MS BODYBUILDER 2P

POLLED PUREBRED FEMALE NUH 2P 1 January 2004
PG635516

3C WALLY C240 BLK
LCHMN BODYBUILDER 7303F PG502869
LSF MOMENTO D8

NUH BOLD ZIMA 1J
NUH MS RED HORIZON 46M G598825
NUH MS 29J



BW: 89; 205 day: 693; 365 day: 1002.
AI'd to TNT Gunner N208 -PG676236- on Apr 27/09. Exposed to Skors Dynamic 76S -BPG665326- May 3 - May 30/09.

A lot: polled Purebred female, NUH Ms Jazz 531W, NUH 531W, Feb 14/09, by Skors Black Jazz 50R BPG646412, BW: 101.

179. NUH MS REALITY 4P

POLLED PUREBRED FEMALE NUH 4P 2 January 2004
PG655374

PPSR COAL BLACK 65F
LRS RED REALITY 33J PG548916
LRS MS PREFD STOCK 715G

NUH BOLD ZIMA 1J
GTC MISS 48M G598847
GTC MS 67K

600 PLUS
MISS PRICKLY PEAR 57B
LRS PREFERRED STOCK 370C
LRS MS RED BARTON 560B
BBS ZIMA D55
BIG ROCK TWINKLES 6D
MFL NU-MILLENNIUM 62F
NUH DUSTYS BEST 12A

BW: 74; 205 day: 635; 365 day: 944.
AI'd to CNS Dream On L186 -BPTG632589- on Apr 20/09. Exposed to Skors Red Fullback 192U -PG702086- May 2 - June 6/09.

Graf's Nu-Horizon Simmentals

180. NUH JUJUBE 17P

POLLED PUREBRED FEMALE NUH 17P 11 January 2004
PG635515

BBS ZIMA D55
NUG JU JUBE 31J PTG521254
MISS NUG 1X

HVB MARQUIS 53G
NUH 71K 561182
NUH SWEET INNOCENCE 29D



BW: 100; 205 day: 705; 365 day: 980.
Al'd to TNT Gunner N208 -PG676236- on Mar 30/09. Exposed to Skors Dynamic 76S - BPG665326- May 3 - May 30/09.

A lot: polled Purebred female, NUH Ms Horizon 528W, NUH 528W, Jan 31/09, by LBR Crocket R81 PTG671306, BW: 104.

181. NUH MS RED JUBE 19P

POLLED PUREBRED FEMALE NUH 19P 11 January 2004
PG635517

BBS ZIMA D55
NUG JU JUBE 31J PTG521254
MISS NUG 1X

MFL NU-MILLENNIUM 62F
GTC MS 56K 561934
GTC CAMEO 2F

RED CADILLAC ZU95
MISS PELTZ N55
HSF SHOGUN 89M
NUG 156N
MFL HOFFMAN 69D
MFL CINDY 8C
BGS CHAIRMAN 38B
GTC MS EXTRA 48C

BW: 102; 205 day: 629; 365 day: 986.
Al'd to TNT Top Gun R244 -PG654937- on Apr 3/09. Exposed to Skors Dynamic 76S - BPG665326- May 3 - May 30/09.

182. NUH MS REDHAWK 33P

POLLED PUREBRED FEMALE NUH 33P 18 January 2004
PG635518

DAY MR NIGHTHAWK 634E
LAZY S BLACK HAWK 37H BPG417639
KAPPES LADY EIGHT C251

CHARLES PRIDE
MISS PRICKLY PEAR 214B
PPSR EIGHT BALL
KAPPES POLLED DAKOTA A36
SIM-ROC PREMIER
SAO C&B LADY 66R
SWITZ POL PROGRESS
LJJ GOLDEN BONANZA

DAY TWELVE OCLOCK HIGH
NUH MS HORIZON 2H 507653
CSSS POLLED DESS

BW: 96; 205 day: 676; 365 day: 962.
Al'd to TNT Gunner N208 -PG676236- on Apr 10/09. Exposed to Skors Dynamic 76S - BPG665326- May 3 - May 30/09.

183. NUH MISS POWERCAT 24N

POLLED PUREBRED FEMALE NUH 24N 13 January 2003
PG617425

NLC 64Y TOMCAT
PELTONS POWERCAT 344G PTG505105
COTTONWOOD ENHANCED

MFL NU-MILLENNIUM 62F
NUH 15K 561166
PYRAMID JEWEL



BW: 86; 205 day: 623; 365 day: 973.
Al'd to TNT Top Gun R244 -PG654937- on Apr 1/09. Exposed to Skors Encore 250T - PG684441- May 12 - June 1/09.

A lot: polled Purebred female, NUH Ms Primrose 505W, NUH 505W, Jan 3/09, by TNT Top Gun R244 PG654937, BW 90.

184. NUH POWERCAT 40N

POLLED PUREBRED FEMALE NUH 40N 23 January 2003
PG617429

NLC 64Y TOMCAT
PELTONS POWERCAT 344G PTG505105
COTTONWOOD ENHANCED 803D

CHERITHBROOK MR ABE
KS BM N713
BLACK ENHANCER
NICHOLS BEAT 85U
MFL HOFFMAN 69D
MFL CINDY 8C
PVSC NU-TREND
GTC MS EXTRA 48C

MFL NU-MILLENNIUM 62F
GTC MS 4J 530975
GTC MS NU-TREND 39G

BW: 84; 205 day: 604; 365 day: 938.
Al'd to TNT Gunner N208 -PG676236- on Mar 30/09. Exposed to Skors Dynamic 76S - BPG665326- May 3 - May 30/09.

185. NUH MS POWERSTROKE 27M

BLACK POLLED PUREBRED FEMALE NUH 27M 9 January 2002
BPG598824

BURNS BULL X339U
WLE POWER STROKE BPG521306
NICHOLS JOLIETTE C75

NUH RED 26H
NUH 49K PG561176
NUH MS HORIZON 44H

BLACK MAX
BURNS COW U339
F NICHOLS BLACKADVANTAGE
NICHOLS JOLIETTE 90Z
LGW BLACK PREMINITION 5D
LEAF MISS SKY 900F
SKORS MR DUSTY 1E
MFL NATASHA 56Z

BW: 85; 205 day: 557; 365 day: 866.
Al'd to TH Black Edition 8R -BPG640896- on Mar 30/09. Exposed to Skors Encore 250T -PG684441- May 12 - June 1/09.

186. NUH MS RED HORIZON 46M

PUREBRED FEMALE NUH 46M 19 January 2002
G598825

BBS ZIMA D55
NUH BOLD ZIMA 1J PG524740
BIG ROCK TWINKLES 6D

RED CADILLAC ZU95
MISS PELTZ N55
BOLD IMPACT 7Y
DOUBLE BAR X TAMMY
MFL HOFFMAN 69D
MFL CINDY 8C
NUH TAZ 20D
NUH SATIN 2B

MFL NU-MILLENNIUM 62F
NUH MS 29J 530955
NUH MS TAZ 72F

BW: 106; 205 day: 706; 365 day: 1050.
Al'd to Lchmn Bodybuilder 7303F -PG502869- on Mar 25/09. Exposed to Skors Encore 250T -PG684441- May 12 - June 1/09.

187. GTC MISS 48M

PUREBRED FEMALE GTC 48M 22 January 2002
G598847

BBS ZIMA D55
NUH BOLD ZIMA 1J PG524740
BIG ROCK TWINKLES 6D

MFL NU-MILLENNIUM 62F
GTC MS 67K 561936
NUH DUSTYS BEST 12A

RED CADILLAC ZU95
MISS PELTZ N55
BOLD IMPACT 7Y
DOUBLE BAR X TAMMY
MFL HOFFMAN 69D
MFL CINDY 8C
MR DUSTY DIGNIFIED 10P
JRFS MS EXTRA BEST 500Y

BW: 90; 205 day: 640; 365 day: 961.
Al'd to TNT Gunner N208 -PG676236- on Apr 1/09. Exposed to Skors Dynamic 76S - BPG665326- May 3 - May 30/09.

Virginia Ranch



Harry & Michelle Satchwell

Box 47 Cremona, AB T0M 0R0

403 637-2587 or cell 403 818-4205 email: virginiaranch@xplornet.com

Yee haa, its "Cow A Rama time", which happens to be my favorite sale of the year. It's a low key sale where Ranchers, Farmers and Purebred Breeders come together to buy good females for a reasonable price. Through the years we have purchased seven females through this sale for an average cost of \$3000 each. At our Lucky Bull sale in Olds this past spring, three bulls out of dams purchased at this sale, averaged \$8300 each. It shows that this sale, sells quality.

Virginia Ranch is proud to be involved in our 3rd Annual Mini Production sale. We have been active purebred Simmental breeders for the past 23 years. Through these 23 years, we have enjoyed the camaraderie of the many functions we have been involved in, or have attended. However, we have grown exhausted of the daunting task of providing footnotes for each and every lot consigned. That being said, we want any bidder or purchaser to know that we cull extremely hard for udders and temperament, and feel you can purchase and bid with confidence on any animal in our sale string. We would be pleased to visit with any interested party about any of our cattle. Just give us a call, or stop by for a visit to see the gals at home.

Harry, Michelle, Allison & Brandon Satchwell



200. VIRGINIA MS UMEEKO

FULLBLOOD FEMALE
710981

VR 66U

18 January 2008

IPU BRONSON 19K
VIRGINIAS RED MARCIANO FF 639713
DFM JUNI 960J

ANCHOR "T" IKON 1H
CEN LUCY 533L 557993
MRLN HENNY

PRL HOUSTON 005H
DORA LEE FRANCESCA
DFM EDWIN 51E
DFM BARBIE'S IMAGE 437D
ANCHOR "T" METRO 4E
ANCHOR "T" HELGA 10Y
ROGANT
GOLDL

BW: 98; 205 day: 674.



Crossroad Tuxedo 222T

CEN Lucy 533L



AI'd on March 26/09 to Crossroad Tuxedo 222T -P678330- and exposed to Double Bar D
Poll Twister -P683657- April 25 - May 22/09.
FULL FLECKVIEH.

Virginia Ranch



201. VIRGINIAS MS UTAH

FULLBLOOD FEMALE
710970

VIRS 115U

2 February 2008

IPU BRONSON 19K
VIRGINIAS RED MARCIANO FF 639713
DFM JUNI 960J

BLANCHETTE 1Y
DFM FAYETTE 627F 359739
FLOSSIE 51X



Double Bar D Poll Twister

BW: 100; 205 day: 772.

Bred April 8/09 to Double Bar D Poll Twister -P683657- and exposed to same April 25/09 - May 22/09.

FULL FLECKVIEH



202. VIRGINIA MS URIELLE

FULLBLOOD FEMALE
710986

VIRS 233U

7 January 2008

IPU BRONSON 19K
VIRGINIAS RED MARCIANO FF 639713
DFM JUNI 960J

ANCHOR *T* LEGEND 7H
SU MILLICENT 233M T597007
DD&E UNIVERSAL ESSENCE36E

PRL HOUSTON 005H
DORA LEE FRANCHESCA
DFM EDWIN 51E
DFM BARBIE'S IMAGE 437D
ANCHOR *T* METRO 4E
ANCHOR *T* HELGA 10Y
MFL UNIVERSE 28U
MRLN PETRA

BW: 90; 205 day: 668.

Bred April 25/09 to Double Bar D Poll Twister -P683657- and exposed to same from April 25/09 - May 22/09.

FULL FLECKVIEH



203. VIRGINIA MS USONA

FULLBLOOD FEMALE
710995

VIRS 28U

9 January 2008

ROOINIK
EAGLE-RIDGE LOBO 11L 563181
JB HENDRIKA 28H

LBR METRO 37N
VIRGINIA MS RANDILEA 676150
SLS FANNA 9F



Eagle-Ridge Lobo 11L

BW: 89; 205 day: 594.

Observed bred March 25/09 Mader P Magnum 86U -PG693113- and exposed to same March 25/09 - May 25/09.

FULL FLECKVIEH



204. VIRGINIA MS UMIKA

FULLBLOOD FEMALE
710999

VIRS 57U

19 January 2008

ROOINIK
EAGLE-RIDGE LOBO 11L 563181
JB HENDRIKA 28H

IPU BRONSON 19K
VIRGINIA MS SHANELLE 676436
VIRGINIA MS. NOKIA 10N

OVERAL BIRNER
WISP-WILL PEGGY 5TH
KNIGHT STINGER 207Y
JB ERIKA 578E
PRL HOUSTON 005H
DORA LEE FRANCHESCA
ANCHOR *T* IMPACT 2H
SPJ LACEY 38L

BW: 90; 205 day: 682.

Bred April 15/09 to Double Bar D Poll Twister -P683657- and exposed to same from April 25/09 - May 22/09.

FULL FLECKVIEH

Virginia Ranch



205. VIRGINIA MS POLL UMAX

POLLED FULLBLOOD FEMALE
PT710996

VIRS 19U

5 January 2008

HOLZBACH
HERMANUS P676141
AURIKE

HOLZMANN
307
EMPAU
343

DFM EDWIN 51E
DFM JUNI 960J 511756
DFM BARBIE'S IMAGE 437D

OVERHALL HIVY
DFM CRYSTAL 319C
ABR SIR ARNOLDS IMAGE
MISS DFM BARBIE 151B

BW: 92; 205 day: 598.

Bred April 2/09 to Double Bar D Poll Twister -P683657- and exposed to same April 25/09 - May 22/09.

FULL FLECKVIEH



206. VIRGINIA MS ULTIMA

PUREBRED FEMALE
G711003

VIRS 96U

25 January 2008

STF STARQUEST N114
SHAWACRES RANGER 38R PG643761
DAY MS 833K

STF MONTANA BLACK KF25
STF LEONA L260
RED PEPPER
DAY MS 778H
PRL HOUSTON 005H
DORA LEE FRANCHESCA
EAGLE-RIDGE 59F
MS. VIRS ARNOLD 54C

IPU BRONSON 19K
VIRGINIA MS. NUTMEG 52N 619059
VIRGINIA'S HILARY 52H

BW: 100; 205 day: 690.

Observed bred March 27/09 to Mader P Magnum 86U -PG693113- and exposed to same March 25/09 - May 25/09.



207. VIRGINIA MS POLL UNISSA

POLLED PUREBRED FEMALE
PG711005

VIRS 112U

31 January 2008

STF STARQUEST N114
SHAWACRES RANGER 38R PG643761
DAY MS 833K

STF MONTANA BLACK KF25
STF LEONA L260
RED PEPPER
DAY MS 778H

IPU BRONSON 19K
VIRGINIA MS. NICKI 93N 619048
DEMBY MISS UNIVERSE 583Z

PRL HOUSTON 005H
DORA LEE FRANCHESCA
MFL UNIVERSE 28U
MISS T 41N

BW: 105; 205 day: 689.

Observed bred April 10/09 to Mader P Magnum 86U -PG693113- and exposed to same March 25/09 - May 25/09.



208. VIRGINIA MS POLL UNICE

POLLED PUREBRED FEMALE
PG711002

VIRS 126U

9 February 2008

HART RED CHIEF J242
IPU THE RED MILE 12N PG608861
MISS PELTON J920

BDV FESTUS 35G
MISS T CASINA D712
MV RED LIGHT 406
MISS PELTON E517
ROONIK
JB HENDRIKA 28H
GREAT GUNS MOSES 50D
SIM-ROC DANDY

EAGLE-RIDGE LOBO 11L
DH NARCISA 12N 594753
ECHO MISS HIALEAH

BW: 95; 205 day: 667.

Observed bred April 1/09 to Mader P Magnum 86U -PG693113- and exposed to same March 25/09 - May 25/09.

Virginia Ranch



209. VIRGINIA MS POLL UREEKA

POLLED PUREBRED FEMALE
PG711007

VIRS 132U

10 February 2008

HART RED CHIEF J242
IPU THE RED MILE 12N PG608861
MISS PELTON J920

IPU BRONSON 19K
VIRGINIA'S MS PETRA 631866
DEMBY MISS UNIVERSE 583Z

BDV FESTUS 35G
MISS T CASINA D712
MV RED LIGHT 406
MISS PELTON E517
PRL HOUSTON 005H
DORA LEE FRANCESCA
MFL UNIVERSE 28U
MISS T 41N

BW: 90; 205 day: 647.

Observed bred April 12/09 to Mader P Magnum 86U -PG693113- and exposed to same March 25/09 - May 25/09.



210. VIRGINIA MS URBANA

PUREBRED FEMALE
G703028

VIRS 59U

18 January 2008

SU NACHO 57N
BEECH BRO SALSA 3S SG652596
SSP MYSTERY 19M

OUTBACK STOCKBULL 7P
VIRGINIA MS POLL SAMMY JO PG676434
VIRGINIA MS. NICKI 93N

LRS RED REALITY 33J
SU KALI 57K
TSS BOZ BOLD CAT
SSP EXAMINER 94G
LCHMN BODYBUILDER 7303F
ANCHOR D ZINA 29L
IPU BRONSON 19K
DEMBY MISS UNIVERSE 583Z

BW: 97; 205 day: 701.

Observed bred April 9/09 to Mader P Magnum 86U -PG693113- and exposed to same March 25/09 - May 25/09.



211. VIRGINIA MS POLL URSALA

POLLED PUREBRED FEMALE
PG703027

VIRS 6U

1 January 2008

SU NACHO 57N
BEECH BRO SALSA 3S SG652596
SSP MYSTERY 19M

OUTBACK STOCKBULL 7P
VIRGINIA MS POLL SAHARA PG676433
MI MS KIMBERLY 2K

LRS RED REALITY 33J
SU KALI 57K
TSS BOZ BOLD CAT
SSP EXAMINER 94G
LCHMN BODYBUILDER 7303F
ANCHOR D ZINA 29L
MRLN LIONHEART
HEMR GINA 13H

BW: 70; 205 day: 666.

Observed bred April 1/09 to Mader P Magnum 86U -PG693113- and exposed to same March 25/09 - May 25/09.



Mader P Magnum 86U

Moose Creek Simmentals

Moose Creek Simmentals

Don, Joyce & Shon Smith
 Box 47, Gordondale, AB T0H 1V0
 Phone (780) 353-2284 email: mosecrk@telusplanet.net

Moose Creek Simmentals are proud to be involved in the Cow-A-Rama Sale for the second year with a mini herd production. Glenn was given his choice of the heifer pen and we are confident that the females he selected will go out and work well in anyone's program. Buy with confidence and we wish you well with your purchases. We look forward to seeing you at the sale.

Don, Joyce & Shon Smith

REFERENCE SIRE

MJB ROLF 15R

FULLBLOOD MALE MJB 15R 2 February 2005
 633886

BHR DOORN G629E
 SHAWACRES JAHARI 50L T559299
 MISS SHAWACRES HEIDI 1H

STERLING HERKULES
 MISS MJB FROMAGE 3F T522293
 BEL LITTA



BW: 105; 205 day: 758; 365 day: 1316.
 FULL FLECKVIEH MJB Rolf (aka "Okie") has been a valuable asset to our herd. He adds natural muscling and thickness to his calves. His calves have a solid color pattern and are very docile.



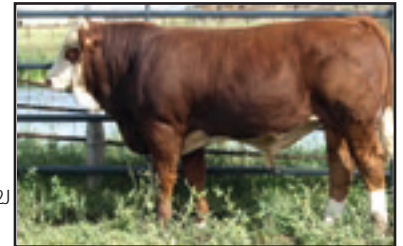
REFERENCE SIRE

MOOSE CREEK IMAGE 12T

FULLBLOOD MALE MCI 12T 8 January 2007
 679941

SIEGFRIED
 ABR SIR ARNOLDS IMAGE T140262
 ABR SHINAGH VIOLET

DOUBLE BAR D LINCOLN
 MISS LINCOLN 12L 565586
 RICHMOND MISSANTONIUS72J



BW: 80; 205 day: 732; 365 day: 1244.
 FULL FLECKVIEH. This bull has surpassed everything we were expecting of him. He has sired low birth weights and excellent weaning weights. To have one of his offspring selected for the National Trust Sale his first year out is quite an accomplishment. MCI 43W (inset picture above) is a 12T calf with a 90 lb birthweight who weighed 852 lbs on Sep 5/09.



215. MOOSE CREEK URANIA 73U

FULLBLOOD FEMALE MCI 73U 13 January 2008
 697819

SH ROMULUS F53R
 DDD BROADWAY G534 T523704
 KLONDIKE KIM GNM 402B

BEAUFORT ADMIRAL
 SU JUBILEE 931J 517563
 SU ELIZABETH 506E

SIEGFRIED
 MILLHILL FLOWER
 SRF MR BIGFOOT S138
 SIM-ROC GWEN
 SCOTTISH PRIDE
 LUCY
 BOLD LEADER
 SU PREMIERSPERFECTION205B

BW: 100; 205 day: 675.
 Exposed to Moose Creek Image 12T -679941- Mar 24 to Aug 15/09. Observed bred Apr 1/09.
 Preg checked Sept 11/09 - approx. 5.5 months.
 FULL FLECKVIEH We feel this DDD Broadway daughter will be an excellent mother. Her dam, purchased at the Stulberg dispersal, was sired by Beaufort Admiral, a son of Scottish Pride which offers some outcross genetics.



216. MOOSE CREEK OMEGA 95U

FULLBLOOD FEMALE DJLS 95U 25 January 2008
 697767

OVERAL BIRNER
 ROOINIK T500417
 WISP-WILL PEGGY 5TH

WLSF ABRAHAM
 SALMON ARM OMEGA 35P 650934
 SALMON ARM ORLA 4M

KYKSO BANO
 OVERAL SELLY
 CONGOSIM HAMAN 82
 WISP-WILL PENNY 3RD 85
 KYKSO KALGER
 HAKBOS DORA
 KYKSO HAPED
 VON-TALER ALTA

BW: 90; 205 day: 594.
 Exposed to Moose Creek Image 12T -679941- Mar 24 to Aug 15/09. Preg checked Sept 11/09 - approx. 4.5 months.
 FULL FLECKVIEH A good full Fleckvieh Rooinik daughter out of a female purchased at the Salmon Arm herd dispersal. We wondered how these South African cattle would do up here with our cold winters, but mother and daughter did just fine. Omega was born when we were having some -40 weather up here, but she came through it just as well as the rest of the calves.

Moose Creek Simmentals



217. MOOSE CREEK ULYSSA 77U

FULLBLOOD FEMALE
697820

MCI 77U

16 January 2008

SHAWACRES JAHARI 50L
MJB ROLF 15R 633886
MISS MJB FROMAGE 3F

CF-DDD HOLLYWOOD M200
GIBBONS DOLLY 654767
TRYON DELLA

BHR DOORN G629E
MISS SHAWACRES HEIDI 1H
STERLING HERKULES
BEL LITTA
HOLB
DDD WINADREAM
ANCHOR "T" PARAGON 1X
TRYON DIXIE

BW: 89; 205 day: 651.

Exposed to Moose Creek Image 12T -679941- Mar 24 to Aug 15/09. Observed bred Apr 10/09. Preg checked Sept 11/09 – approx. 4 months.

FULL FLECKVIEH This double goggled female is out of our herdsire MJB Rolf who we purchased at the Calgary Round-Up Sale. Her dam, Gibbons Dolly, was purchased at the Ontario Autumn Classic sale. Her first calf, an Arnold's Image son, sold at our bull sale and we have a full brother to 77U in the bull pen this year.



218. MOOSE CREEK UPTOWN GIRL

POLLED FULLBLOOD FEMALE
P697817

MCI 64U

8 January 2008

ANDERLAND MATIAS-POENA
BAR 5 P SA EXPERT 826M PT598604
TOVERBERG ERIKA

GRINALTA'S GRIDIRON 403J
MOOSE-CREEK NADALIA 142N P602999
MS BAF POL KASSANDRA 32K

ELDORADO
ANDERLAND FEMMI
KYKSO KALGER
TOVERBERG ELSA
PRL PORTERHOUSE REGENT
GRINALTA'S POLLED FLECK
MR MAC WEAPON 88G
MS BAF GAIL 71H

BW: 94; 205 day: 637.

Exposed to Moose Creek Image 12T -679941- Mar 24 to Aug 15/09. Observed bred Apr 20/09. Preg checked Sept 11/09 – approx. 5 months.

This double polled fullblood out of Bar 5 Expert and a dark red Gridiron female has a lot of Fleckvieh breeding. Her maternal sister sold here last year to Yellow Rose Cattle Co.



219. MOOSE CREEK UNITY 70U

POLLED FULLBLOOD FEMALE
P697778

DJLS 70U

12 January 2008

ANDERLAND MATIAS-POENA
BAR 5 P SA EXPERT 826M PT598604
TOVERBERG ERIKA

SPRINGCREEK JAGUAR 100J
NORTONS POLL LADY JAG104R P642647
NORTONS SANDY 73J

ELDORADO
ANDERLAND FEMMI
KYKSO KALGER
TOVERBERG ELSA
SPRINGCREEK DAKOTA 50D
SPRINGCREEK DELLA 95F
ANCHOR "T" METRO 4E
REWS NORTH WINDS MELONE

BW: 89; 205 day: 637.

Exposed to Moose Creek Image 12T -679941- Mar 24 to Aug 15/09. Preg checked Sept 11/09 – approx. 5 months.

Here is another double polled female out of Bar 5 Expert. Her dam is a dark red, goggle eyed Springcreek Jaguar daughter that we purchased at the Norton dispersal. Her first calf was sold at Cow-A-Rama and she has a good Exodus calf in the bull pen this year.



220. MOOSE CREEK URSULA 120U

FULLBLOOD FEMALE
697787

DJLS 120U

7 February 2008

SHAWACRES JAHARI 50L
MJB ROLF 15R 633886
MISS MJB FROMAGE 3F

SPRINGCREEK JAGUAR 100J
NORTONS POL LADY JAG 102R P642682
KUZIO 4E METRO 15L

BHR DOORN G629E
MISS SHAWACRES HEIDI 1H
STERLING HERKULES
BEL LITTA
SPRINGCREEK DAKOTA 50D
SPRINGCREEK DELLA 95F
ANCHOR "T" METRO 4E
DONHAZ MS WINDY 16Y

BW: 95; 205 day: 657.

Exposed to Moose Creek Image 12T -679941- Mar 24 to Aug 15/09. Observed bred Mar 24/09. Preg checked Sept 11/09 – approx. 5.5 months.

This double goggled, dark red female is out of our full Fleckvieh herdsire MJB Rolf (aka "Okie") and another Springcreek Jaguar dam. She is bred to our heifer bull for an early January calf. Okie has really put his stamp on this heifer (moderate frame and thick). We have a full sister in the heifer pen this year.

Moose Creek Simmentals



221. MOOSE CREEK UNDINE 78U

FULLBLOOD FEMALE
697779

DJLS 78U

16 January 2008

SHAWACRES JAHARI 50L
MJB ROLF 15R 633886
MISS MJB FROMAGE 3F

CASEYS MAJESTY 1Y
MOOSE-CREEK CASEY 140N 602998
MOOSE-CREEK JESSICA 93J

BHR DOORN G629E
MISS SHAWACRES HEIDI 1H
STERLING HERKULES
BEL LITTA
KNIGHT MAJESTY 247S
CHERRY'S HEIDI
MR PRL FORRESTER 065F
KOROL GAYLEEANNE 39G

BW: 105; 205 day: 613.

Exposed to Moose Creek Image 12T -679941- Mar 24 to Aug 15/09. Observed bred Apr 9/09. Preg checked Sept 11/09 – approx. 4 months.

Double goggled fullblood out of our herdsire and a Caseys Majesty female that has always produced great calves. This heifer's dam has exceptional feet under her and a great udder. This heifer also has a lot of Fleckvieh breeding in her pedigree.



222. MOOSE CREEK URBANA 110U

FULLBLOOD FEMALE
697786

DJLS 110U

2 February 2008

SHAWACRES JAHARI 50L
MJB ROLF 15R 633886
MISS MJB FROMAGE 3F

MFL BOSS MAN 5A
MOOSE-CREEK LADY 100K 547820
MOOSE-CREEK LADY 6G

BHR DOORN G629E
MISS SHAWACRES HEIDI 1H
STERLING HERKULES
BEL LITTA
BOLD
MFL PETRA 95P
SIR BAF WESTERN 7E
MOOSE-CREEK LADY 2A

BW: 97; 205 day: 675.

AI'd to Winchester HR P8315 -PTG653187- Mar 24/09 and exposed to Moose Creek Image 12T -679941- Apr 13 to Aug 15/09. Preg checked Sept 11/09 – approx. 5.5 months. Out of our herdbull, a Jahari son and a Boss Man female.



223. MOOSE CREEK RED UNIQUE84U

POLLED PUREBRED FEMALE
PG697822

MCI 84U

2 January 2008

CNS DREAM ON L186
REMINGTON RED LABEL HR PG634702
HS REFLECTIONS J34

BH RIGHT TIME 520E
MOOSE-CREEK NICOLE 94N PG602980
MOOSE-CREEK STARLA 42H

NICHOLS BLK DESTINY G151
CNS SHEEZA DREAM K107W
BS MR ARAPAOHE 811A
HF/GFI RUBY RED 33E
DS BLACK ZINGER 141B
HF GFI QUEENOFDENIAL C42
SIR BAF WESTERN 7E
WYA MS NORTH STAR

BW: 96; 205 day: 645.

AI'd to Bar 15 Timex 33M -PG571129- Mar 23/09 and exposed to Moose Creek Image 12T -679941- Apr 9 to Aug 15/09. Observed bred to Moose Creek Image 12T Apr 9/09. Preg checked Sept 11/09 – approx. 4.5 months.

This heifer is out of Remington Red Label and an excellent Right Time female. Her calves are always in the top end of the keeper pen.



224. MOOSE CREEK BLACK UMBER

BLACK POLLED PUREBRED FEMALE
BPG697828

MCI 601U

14 January 2008

HC POWER DRIVE 88H
KENCO/MF POWERLINE 204L BPTG584683
SAFN GLAMOUR 11J

OMF LONG CUT J6
MOOSE-CREEK PHANTASY 65P PG623364
DFM 565E

WLE POWER STROKE
KAPPES LADY IRISH F88
SAC MR MT 73G
SAC MISS JET TOP 29G
MEYERS RED TOP
OMF SADEVCE G-26
DFM BEN 131B
MISS DFM IVY 23X

BW: 96; 205 day: 668.

AI'd to Wheatland Bull 680S -BPG666762- Mar 23/09 and exposed to Moose Creek Image 12T -679941- Apr 16 to Aug 15/09. Preg checked Sept 11/09 – approx. 3.5 months.

This excellent heifer is out of Kenco/MF Powerline and an OMF Long Cut female. We AI'd this heifer to Wheatland Bull 680S and have never seen her cycle back, but the vet has preg checked her Sept 11/09 for approximately 3.5 months. Whoever she is bred to, expect a good calf, but keep an eye on her for her AI date.

Czech-Mate Livestock

Czech-Mate Livestock

Jim, Gwen & Andrea Smith

Box 651, Carstairs, AB T0M 0N0
403 337-2997 cell: 403 818-3106

email: czech@xplornet.com website: czech-matelivestock.com

We welcome the opportunity to sell at the Cowarama sale once again.

It's been a few years since we last sold at Cowarama, but this sale has always been good to us, whether it is selling cattle or buying some very good females to fit into our herd. This year we are offering 7 exceptional bred heifers – these girls were destined to go into our own herd. They are all top notch replacements that we wish we could keep – but with high feed prices, we decided that we needed to create some cash flow. In the group there are 2 Icon daughters, 2 Red Labels and 3 Northsky Herc heifers. They were all AI'd to top sires – General Lee, King Arthur, Top Gun and then were exposed to our real good black herd bull WLB Bull 377T. Buy with confidence. They were intended to go straight into our herd – now we're confident they will raise quality calves in yours!



Remington General Lee



STR King Arthur

Service Sires



226. CMS SHIRAZ 821U

POLLED PUREBRED FEMALE
PG701198

CMS 821U

13 January 2008

BBS RED CANADIAN L24
CMS RED POLLED ICON 16P PG620039
CMS MELODY 03M

BOZ REDCOAT
BBS MISS RED BEAUTY J109
LCHMN BODYBUILDER 7303F
YR RED CHERRY 22K
BOZ REDCOAT
MISS FUTURE K 23C
ASM MR BAR SAM 212H
WSR JENNIFER 62J

KSU MANHATTAN 38J
CMS RENAISSANCE 08R G648043
CMS LESLIE 05L

BW: 85; 205 day: 610; 365 day: 794.

AI'd to Remington General Lee 106T -PTG695269- on April 19 & exposed to WLB Bull 277P 377T -BPG676494- from May 4 – June 1.

821U is a full sister to the bull Sande Cattle Co. of Olds bought in 2008 for \$4500.



227. CMS MERLOT 846U

POLLED PUREBRED FEMALE
PG701216

CMS 846U

22 January 2008

BBS RED CANADIAN L24
CMS RED POLLED ICON 16P PG620039
CMS MELODY 03M

BOZ REDCOAT
BBS MISS RED BEAUTY J109
LCHMN BODYBUILDER 7303F
YR RED CHERRY 22K
BBS ZIMA D55
LFE PRECIOUS GAL 64F
MFL DARREL 82D
WSR ELSIE 01E

ASM MR BAR SAM 212H
CMS PANDA 50P PG631453
WSR JENNIFER 62J

BW: 90; 205 day: 629; 365 day: 813.

AI'd to Remington General Lee 106T -PTG695269- on April 30 & exposed to WLB Bull 277P 377T -BPG676494- from May 4 – June 1/09 and observed bred May 20.

846U is a full sister to the herdsire Glen Weeks bought in 2008 for \$6000.



228. CMS UREIKA 845U

POLLED PUREBRED FEMALE
PG701214

CMS 845U

21 January 2008

CNS DREAM ON L186
REMINGTON RED LABEL HR PG634702
HS REFLECTIONS J34

NICHOLS BLK DESTINY G151
CNS SHEEZA DREAM K107W
BS MR ARAPAHOE 811A
HF/GFI RUBY RED 33E
LRS RED REALITY 33J
WHEATLAND LADY 902J
ASM MR BAR SAM 212H
WSR DANIELLE 39D

WHEATLAND'S INFERNO 325N
CMS SHANGRALA 603S PG668875
CMS PARIS 27P

BW: 76; 205 day: 572; 365 day: 772.

AI'd to STR King Arthur N310 -PG687429- on April 18 & exposed to WLB Bull 277P 377T -BPG676494- from May 4 – June 1.

845U's dam is a Wheatland Inferno daughter by a sister to CMS Lara Croft 04L (Supreme Champion at 2003 Calgary Stampede).

Czech-Mate Livestock



229. CMS UNICE 818U

POLLED PUREBRED FEMALE
PG701196

CMS 818U

10 January 2008

CNS DREAM ON L186
REMINGTON RED LABEL HR PG634702
HS REFLECTIONS J34

SGCC RED LANCER 17K
CMS SHANELL 661S PG668885
CMS NATALIA 03N

NICHOLS BLK DESTINY G151
CNS SHEEZA DREAM K107W
BS MR ARAPAHOE 811A
HF/GFI RUBY RED 33E
LRS BIG COUNTRY 37E
SGCC RED NISKU 2H
HOOK'S RED QUORUM 55H
CMS LARA CROFT 04L

BW: 84; 205 day: 594; 365 day: 810.

AI'd to STR King Arthur N310 -PG687429- on March 29 & exposed to WLB Bull 277P 377T -BPG676494- from May 4 - June 1/09.

818U is a granddaughter of CMS Natalia 3N who was at the side of CMS Lara Croft when they won Supreme Champion honors at Calgary Stampede and Champion Female at both Farm Fair and Agribition.



230. CMS UNMATCHED 862U

POLLED PUREBRED FEMALE
PG701225

CMS 862U

7 February 2008

WFL MR WESTWAY 220H
NORTH SKY RED HERC 18M PG603121
NORTH SKY MS ROOKIE 40H

ASM MR BAR SAM 212H
CMS MAGGIE MAY 27M G600730
WSR EVANGELINE 60E

LRS PREFERRED STOCK 370C
LFE KATARINA 606D
WHF RED ROOKIE 160E
MS BAR NONE 514B
BBS ZIMA D55
LFE PRECIOUS GAL 64F
WSR 50A
WSR UNIS 19U

BW: 91; 205 day: 604; 365 day: 796.

AI'd to Remington General Lee 106T -PTG695269- on March 29 & exposed to WLB Bull 277P 377T -BPG676494- from May 4 - June 1/09.

862U's dam has put a few bulls through our bull sale including a brother in 2008 to Hand Hills Colony for \$5000.



231. CMS INDIGO 858U

POLLED PUREBRED FEMALE
PG701223

CMS 858U

6 February 2008

WFL MR WESTWAY 220H
NORTH SKY RED HERC 18M PG603121
NORTH SKY MS ROOKIE 40H

SGCC RED LANCER 17K
CMS RUMBA 36R PG648065
WSR HELENA 49H

LRS PREFERRED STOCK 370C
LFE KATARINA 606D
WHF RED ROOKIE 160E
MS BAR NONE 514B
LRS BIG COUNTRY 37E
SGCC RED NISKU 2H
MFL DARREL 82D
WSR WENDY 61W

BW: 76; 205 day: 618; 365 day: 778.

AI'd to STR King Arthur N310 -PG687429- on April 3 & exposed to WLB Bull 277P 377T -BPG676494- from May 4 - June 1.

Back to some of our old Fullblood genetics - her grandmother put lots of bulls through our bull sale.



232. CMS JADE 869U

POLLED PUREBRED FEMALE
PG701231

CMS 869U

13 February 2008

WFL MR WESTWAY 220H
NORTH SKY RED HERC 18M PG603121
NORTH SKY MS ROOKIE 40H

BBS RED CANADIAN L24
CMS REDWING 01R G648042
CMS NICOLE 28N

LRS PREFERRED STOCK 370C
LFE KATARINA 606D
WHF RED ROOKIE 160E
MS BAR NONE 514B
BOZ REDCOAT
BBS MISS RED BEAUTY J109
SODER APPRENTICE 0722K
YR RED CHERRY 22K

BW: 81; 205 day: 584; 365 day: 760.

AI'd to TNT Top Gun R244 -PG654937- on April 7 & exposed to WLB Bull 277P 377T -BPG676494- from May 4 - June 1/09.

Jade traces back to Red Canadian and our herd matron BGF 22F - Icon's grandmother. A maternal sister sold at Red & Black 2008 to Lake Bottom Cattle Co. for \$5,100.

Janzen Ranches

Janzen Ranches

Matt & Andrew Janzen
 Box 32, Rosemary, AB T0J 2W0
 403 378-3788 Matt 403 378-4690 Andrew
 Fax: 403 378-3792 email: mjanzen@eidnet.org



We are pleased to bring another standout group to Cow-A-Rama. This year we are only going to bring six, sometimes mother nature calls the shots.

First I would like to thank last years buyers at this sale.

This group also has a lot of the same qualities -- moderate, thick, and will have a great future. There are three Sting daughters that will be very good milking daughters that will bring in a big calf at fall, one LP that will be very hard to let go on sale day, one Copper daughter that will be the last one we probably will let sell, and our first Bodybuilder daughter to sell. That sire group is going to have a bright future.



235. AEDJ MS STING 11U

POLLED PUREBRED FEMALE
 PG712648

AEDJ 11U

30 January 2008

TNT STING M377
 REMINGTON STING 11R PG639894
 BAR 15 SP REWARD 93M

PARKWOOD MR. NAMELY 60N
 AEDJ MS NAMELY 95S PG680546
 AEDJ MS LUCKY 83G

RC STINGER 072K
 MISS ARNOLD J1062
 TNT BULLSEYE K104
 BAR 15 MISS SP 117-160G
 LRS BIG COUNTRY 37E
 DMF OBSESSION 2K
 AEDJ FUGITIVE 14D
 DIGNIFIED INHERITOR 31Z

BW: 90.

Exposed to Beech Bro Shenanigan 11S -PG665065- Apr 15 to June 7/09.



236. AEDJ MS STING 12U

POLLED PUREBRED FEMALE
 PG712649

AEDJ 12U

30 January 2008

TNT STING M377
 REMINGTON STING 11R PG639894
 BAR 15 SP REWARD 93M

BAR 15 COPPER 21M
 AEDJ MS COPPER 9S PG680503
 AEDJ MS STARLIGHT 63P

RC STINGER 072K
 MISS ARNOLD J1062
 TNT BULLSEYE K104
 BAR 15 MISS SP 117-160G
 ER BIG SKY 545B
 BAR 15 MISS SP 117-31K
 SVS M906
 AEDJ MS MODEL ZORRO 71F

BW: 85.

Exposed to Beech Bro Shenanigan 11S -PG665065- Apr 15 to June 7/09.



237. AEDJ MS RED LP 44U

POLLED PUREBRED FEMALE
 PG712650

AEDJ 44U

14 February 2008

DRIFTING "M" LP 59L
 DOUBLE BAR D RED LP 66R PG640420
 DOUBLE BAR D DAKOTA 38M

BBS MR PEPPER J34
 AEDJ MS PEPPER 35L PG562820
 AEDJ MS RED DOC 13H

PVF-BF BF26 BLACK JOKER
 DRIFTING "M" GRETA 4G
 GW BLACK CREEK 289J
 LFE DAKOTA 620J
 RED PEPPER
 MISS PELTZ N55
 WHF RED DOC 940E
 AEDJ MS TITO RUNAWAY 30F

BW: 88.

Exposed to Beech Bro Shenanigan 11S -PG665065- Apr 15 to June 7/09.

Janzen Ranches



238. AEDJ MS STING 60U

POLLED PUREBRED FEMALE
PG712651

AEDJ 60U

18 February 2008

TNT STING M377
REMINGTON STING 11R PG639894
BAR 15 SP REWARD 93M

LBR RED BEACON L405
AEDJ MS BEACON 21S PG680508
AEDJ MS COPPER 110P

RC STINGER 072K
MISS ARNOLD J1062
TNT BULLSEYE K104
BAR 15 MISS SP 117-160G
HOOK'S RED QUORUM 55H
LBR RIGHT DREAM H830
BAR 15 COPPER 21M
AEDJ MS ROMEO 74J

BW: 90.

Exposed to Beech Bro Shenanigan 11S -PG665065- Apr 15 to June 7/09.



239. AEDJ MS COPPER 126U

POLLED PUREBRED FEMALE
PG712652

AEDJ 126U

2 March 2008

ER BIG SKY 545B
BAR 15 COPPER 21M PG571146
BAR 15 MISS SP 117-31K

BBS MR PEPPER J34
AEDJ MS PEPPER 14N PG626519
AEDJ MISS ED 44D

ER BLACK MACK 568Y
JKE 38W
NLC GOOD A NUFF 33G
BAR 15 MISS SP 117-160G
RED PEPPER
MISS PELTZ N55
JJJS SIM-ROC ED 4B
MISS DIGNIFIED 4S

BW: 98.

Exposed to Beech Bro Shenanigan 11S -PG665065- Apr 15 to June 7/09.



240. JJJS MS BODYBUILDER 40U

POLLED PUREBRED FEMALE
PG711138

JJJS 40U

12 February 2008

LCHMN BODYBUILDER 7303F
IPU RED BODYBUILDER 62S PG663830
IPU RED MS SHAMROCK 162N

SV KOOL DN K918
7P NISHA 14N SG614712
7P BOSSY 1E

3C WALLY C240 BLK
LSF MOMENTO D8
LRS RED REALITY 33J
IPU MS SHAMROCK 120L
BH COOL DOWN 821H
SPRING VALLEY E496
MFL BOSS MAN 5A
MISS PREMIER MONACO 4C

BW: 95.

Exposed to Beech Bro Shenanigan 11S -PG665065- Apr 15 to June 7/09.

The Graf Nu-Horizon dispersal, Sevcik Simmentals mature cowherd dispersal, and Twin Anchor 7 Cowherd dispersal will sell under the following Terms & Conditions

Dispersal Terms & Conditions

TERMS - The terms of the sale are cash or cheque payable at par at sale location unless satisfactory credit arrangements have been made previous to the sale. The right of property shall not pass until after settlement is made. Transcon Livestock Corp. reserves the right to require a certified cheque as settlement before releasing any sale cattle. Should any purchaser fail to settle for his purchase Transcon Livestock Corp. reserves full power to resell the animal to the best advantage either publicly or privately, without further notice. Any loss arising from such resale together with keep and all other expenses shall be payable by the defaulter. All settlements must be made with the clerks of the sale before any cattle will be released.

BID - Every animal consigned to the sale must be sold by auction. No private sales will be allowed except as otherwise provided for in the terms and conditions. No by-bidding will be permitted. Each animal will be sold to the highest bidder.

DISPUTES - In cases of disputes, bidding will be reopened between the parties involved. If no further bid is made the buyer will be the person from whom the auctioneer accepted the last bid. The auctioneer's decision in such matters will be final.

PURCHASER'S RISK - Each animal becomes the risk of the purchaser as soon as sold. Animals will be cared for at the purchaser's risk for a reasonable length of time.

INFORMATION SUPPLIED - The information contained in this catalog is believed to be true and accurate. However, the information has been supplied by the seller and neither Transcon Livestock Corp. or Jamesway Enterprises Ltd. assume any responsibility if the information supplied is not accurate.

CATTLE PICTURES - The images in this catalog are believed to be accurate representations of the individual animals. Transcon Livestock Corp. and Jamesway Enterprises Ltd. assume no responsibility if the images as received have been altered.

ANNOUNCEMENTS from the auction block will take precedence over the printed matter in the catalog. Buyers are therefore cautioned to pay attention to any such announcements.

CERTIFICATE OF REGISTRY - The proper Registration or Recordation paper, as the case may be, will be duly transferred and furnished to the buyer for each animal after settlement has been made.

SHIPPING - Assistance will be given in making shipment after the sale but no risk is assumed by the Sales Management or Seller. Expenses incurred are the responsibility of the purchaser. Purchasers are requested to furnish shipping instructions when making settlement.

GUARANTEE - As this is a dispersal sale all cattle will be selling as is with no further guarantee. However, bred females will be pregnancy tested and results along with any pertinent information known to the owners will be announced from the auction block

EXCEPTION TO GUARANTEE - In cases where the animal is subjected to any hormonal or surgical reproduction techniques after the sale, the guarantee shall be null and void.

HEALTH - All animals will have passed the required tests as determined by Agriculture Canada at sale location. It is the buyer's responsibility to determine health requirements for importing any animal into his province or state. Transcon Livestock Corp. assumes no responsibility for the health status of any animal in the sale.

ACCIDENTS - Although every precaution will be taken to protect the safety and comfort of buyers, neither the Sales Management, auctioneer, or Association assumes any responsibility in this matter and disclaims any liability legal or otherwise in the event of accident or loss of property.

RIGHTS AND OBLIGATIONS - The above terms and conditions of the sale shall constitute a contract between the buyer and the seller and be equally binding to both. Resale of animals following purchase in this sale shall constitute a separate transaction and the rights and obligations of the two parties connected thereto are not covered by the terms and conditions of this sale.

TRANSCON LIVESTOCK CORP. IS AGENT ONLY - It is to be clearly understood that Transcon Livestock Corp. is only acting as a medium between buyer and seller and is not in any way responsible for any failure on the part of either party to live up to his obligations, neither does Transcon Livestock Corp. assume any financial obligations to collect or enforce collection of any monies between parties, and any legal action that may, in exceptional cases, be taken, must be between buyer and seller.

The Auctioneer shall have the right to refuse bids from anyone who has a previous record of default in payment or who has not made proper credit clearance prior to the sale with the owner or Sale Managers.

Terms & Conditions

TERMS - The terms of the sale are cash or cheque payable at par at sale location unless satisfactory credit arrangements have been made previous to the sale. The right of property shall not pass until after settlement is made. Transcon Livestock Corp. reserves the right to require a certified cheque as settlement before releasing any sale cattle. Should any purchaser fail to settle for his purchase Transcon Livestock Corp. reserves full power to resell the animal to the best advantage either publicly or privately, without further notice. Any loss arising from such resale together with keep and all other expenses shall be payable by the defaulter. All settlements must be made with the clerks of the sale before any cattle will be released.

BID - Every animal consigned to the sale must be sold by auction. No private sales will be allowed except as otherwise provided for in the terms and conditions. No by-bidding will be permitted. Each animal will be sold to the highest bidder.

DISPUTES - In cases of disputes, bidding will be reopened between the parties involved. If no further bid is made the buyer will be the person from whom the auctioneer accepted the last bid. The auctioneer's decision in such matters will be final.

PURCHASER'S RISK - Each animal becomes the risk of the purchaser as soon as sold. Animals will be cared for at the purchaser's risk for a reasonable length of time.

INFORMATION SUPPLIED - The information contained in this catalog is believed to be true and accurate. However, the information has been supplied by the seller and neither Transcon Livestock Corp. or Jamesway Enterprises Ltd. assume any responsibility if the information supplied is not accurate.

CATTLE PICTURES - The images in this catalog are believed to be accurate representations of the individual animals. Transcon Livestock Corp. and Jamesway Enterprises Ltd. assume no responsibility if the images as received have been altered.

ANNOUNCEMENTS from the auction block will take precedence over the printed matter in the catalog. Buyers are therefore cautioned to pay attention to any such announcements.

CERTIFICATE OF REGISTRY - A registration/recordation certificate issued by the applicable breed association and duly transferred will be furnished to the buyer of each animal after settlement has been made. It is the responsibility of the buyer to determine the acceptance of this certificate in any other association.

SHIPPING - Assistance will be given in making shipment after the sale but no risk is assumed by the Sales Management or Seller. Expenses incurred are the responsibility of the purchaser. Purchasers are requested to furnish shipping instructions when making settlement.

BREEDERS GUARANTEE - As per applicable Canadian Breed Association Breeding Guarantee guidelines. Copies are available at the sale settlement desk to be picked up by the buyer at any time. In no event shall the seller be responsible for reimbursing more than the purchase price.

HEALTH - It is the buyer's responsibility to determine health requirements for importing any animal into his province or state. Transcon Livestock Corp. assumes no responsibility for the health status of any animal in the sale.

ACCIDENTS - Although every precaution will be taken to protect the safety and comfort of buyers, neither the Sales Management, auctioneer, consignors, or Association assumes any responsibility in this matter and disclaims any liability legal or otherwise in the event of accident or loss of property.

RIGHTS AND OBLIGATIONS - The above terms and conditions of the sale shall constitute a contract between the buyer and the seller and be equally binding to both. Resale of animals following purchase in this sale shall constitute a separate transaction and the rights and obligations of the two parties connected thereto are not covered by the terms and conditions of this sale.

TRANSCON LIVESTOCK CORP. IS AGENT ONLY - It is to be clearly understood that Transcon Livestock Corp. is only acting as a medium between buyer and seller and is not in any way responsible for any failure on the part of either party to live up to his obligations, neither does Transcon Livestock Corp. assume any financial obligations to collect or enforce collection of any monies between parties, and any legal action that may, in exceptional cases, be taken, must be between buyer and seller.

The Auctioneer shall have the right to refuse bids from anyone who has a previous record of default in payment or who has not made proper credit clearance prior to the sale with the owner or Sale Managers.

OFFERING OVER 200 HEAD