



Bull & Female Sale and Fall Calver Dispersal

Offering 174 Head

62 Bulls

72 Open Heifers

40 Fall Calving Cows

Tuesday, **April 10, 2012**, 1:00 p.m.

Heartland Livestock, Virden, MB

AVERAGES

37 Simmental Bulls Average \$2,711.00

72 Simmental Heifers Average \$2,618.00

35 Simmental Bred Cows Average \$1,501.00

HIGH SELLING LOTS

Lot #7 \$5,800.00 Hebert Livestock Ventures, Fairlight, SK

Lot #130 \$4,700.00 Double Bar D Farms, Grenfell, SK

Lot #129 \$4,600.00 Workman Bros. Minto, MB

Lot # 64 \$4,500.00 WestGold Farms Ltd. Minburn, AB

Lot # 65 \$4,500.00 Jean Francois Le Blonde, Armagh, P.Q

Lot # 66 \$4,500.00 Sunny Valley Simmentals, Hanley, SK

TRANSCON ON ORDER

Lot # 3 \$2,500.00 Morse Creek Angus, Mt. Vernon, S.D, USA

Lot # 26 \$2,400.00 Gary Baete, Baldur, MB

Lot # 63 \$3,000.00 Kulyk Simmentals, North Battleford, SK

Lot # 65 \$4,500.00 Jean Francois LeBlonde, Armagh, PQ

Lot # 75 \$2,400.00 Morse Creek Angus, Mt. Vernon, S.D USA

Lot # 84 \$2,500.00 Morse Creek Angus, Mt. Vernon, S.D USA

Lot # 85 \$3,000.00 Triple T Diamond Simmentals, Lundar, MB

Lot # 87 \$4,300.00 Keato Meadows Simmentals, Ft. Saskatchewan, AB

Lot # 92 \$2,500.00 Gurr Simmentals, Miniota, MB

Lot # 98 \$2,400.00 Morse Creek Angus, Mt. Vernon, S.D USA

Lot # 102 \$1,800.00 Morse Creek Angus Mt. Vernon S.D USA

Lot # 106 \$2,850.00 Keato Meadows Simmentals, Ft. Saskatchewan, AB

Lot # 110 \$3,900.00 Mader Ranches, Carstairs, AB

Lot # 114 \$2,000.00 Red Oak Simmentals, Tiverton, ON

Lot # 117 \$2,500.00 Outlaw Cattle Co. Hussar, AB

Lot # 119 \$2,900.00 Mader Ranches, Hussar, AB

Lot # 123 \$2,400.00 Red Oak Simmentals, Tiverton, ON

Lot # 131 \$2,000.00 Red Oak Simmentals, Tiverton, ON

Lot # 144 \$2,400.00 Par View Stock Farms, High River, AB

Lot # 145 \$2,150.00 Par View Stock Farms, High River, AB

Lot # 146 \$2,500.00 Lorna Taylor, Pilot Butte, SK

Lot # 169 \$2,000.00 Lorna Taylor, Pilot Butte, SK

TOTAL TRANSCON ON ORDER 22 LOTS \$56,050.00

Volume Buyers:

West Gold Farms Ltd. Minburn, AB 8 Lots \$23,650.00

TJ Farms, Drake, SK 9 Lots \$22,300.00

Sales Management Comments

Big Hills Simmentals is located near the southern boundaries of beautiful Riding Mountain National Park. This is where the Marcischuk operate their mixed farming operation.

The Simmental herd carries a lot of diversity within it which will be noticeable in this sale. Fall and spring born bulls and females will be offered in this new sale venture. Within the different age groups, choices of Black, Red and Fullblood Simmental will be available. Big Hills Simmentals is one of the largest Polled Fullblood Simmental breeders in Canada. Also selling as a feature at this sale will be all the fall calving bred females owned by Big Hills.

We hope you can be with us in Virden on April 10. However, if you can't personally attend, feel free to call on us to assist you with your purchasing needs.

For the Marcischuk Families,



Jay Good,
Transcon Livestock Corp.



Jay Good
403 556-5563



Kelly Richardson
403 638-9377



Bob Wilson
403 540-3084



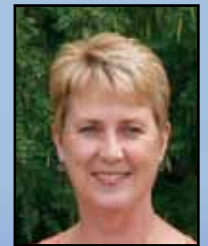
Glenn Norton
780 542-0634



Darren Paget
403 323-3985



Shane Michelson
403 363-9973



Sandra Smith
403 638-9377

Welcome

Big Hills Simmentals began about 8 years ago with the purchase of Simmental cows from breeders across Canada. Over many years of seeing Simmental bulls work in our commercial herd, we were very excited to begin our Registered Simmental business. Our main concentration with the herd is to create top quality Polled breeding stock that will create fine cattle for commercial producers and purebred breeders alike.

We have made several new investments in up and coming bulls through our AI program, which has allowed us to utilize some impressive bloodlines throughout the herd. As well, trusted bloodlines from the past continue to influence the size and quality of animals on the farm as we move forward. Our split calving season (Spring and Fall) also allows us to offer larger animals, ready for full herd use.

You may notice that we have not included a detailed description of each and every animal in the sale. We are confident that the pedigrees of the animals, and the attached pictures will give you an accurate idea of what these animals can do for your farm and your herd. We welcome the opportunity to discuss the cattle on offer any time.

Big Hills Simmentals is part of Marcischuk Farms at Sandy Lake, MB. Darryl and his parents, Robert and Iris, continue to operate the Simmental business as well as 4500 acres of grain, hay and pasture land. With one half of the Big Hills family getting ready to slow down, and the other half busy with two young boys, we felt it was time to reduce the herd numbers. We are glad to offer you this opportunity to purchase well-known and proven genetic lines from our herd to make an impact on your herd today!

We look forward to seeing you on sale day!

The Marcischuk Family





\$2,500.00

SALERIKA MAJOOR 4DE
BAR 5 SA PIONA 04 817N T622225
 TOVERBERG ERIKA

AWL RUFUS EISENHERZ 25M
AWL MS 36P P671882
 AWL EMPRESS 1M

BW: 96. EPDs Spring 2012: 4.3 3.9 34.7 54.1 5.1 32.1 14.7

SALERIKA BARBO
 SALERIKA MINTY
 KYKSO KALGER
 TOVERBERG ELSA
 EISENHERZ
 BAR NONE BONNIE LASS
 EMPEROR
 AWL WESTERN LASS 15K

1. BIG HILLS PIONA 590X

FULLBLOOD MALE
 758955

BHDM 590X

21 September 2010



\$4,000.00

NAWINA GLOBAL P
BAR 5 MAGICAL 855T T705631
 JAHDAL IRENE

AWL STOUT EISENHERZ 37M
AWL STYLE 22R P649106
 AWL WESTERN LASS 11M

BW: 101. EPDs Spring 2012: 5.0 3.8 35.5 59.3 4.7 31.9 14.2

TOVERBERG GLOBAL MAGIC
 ELDANDI GEZMI
 SALERIKA MIVAN 2DE
 JAHDAL ISA
 EISENHERZ
 DOUBLE BAR D SANDY 26L
 ELTON POLLED WESTERN 23H
 BAR 5 MS THUNDER 636H

2. BIG HILLS SILVERADO 592X

POLLED FULLBLOOD MALE
 P758967

BHDM 592X

25 September 2010



\$2,500.00

3. **BIG HILLS NASH 655Y**

POLLED FULLBLOOD MALE
P759295

BHDM 655Y

10 January 2011

FSS GUTTEN TAG
JNR GRAVITY P696308
JNR'S ALTA MARTINA 406P

BIG HILLS SUPER HERO 1R
BIG HILLS MISS HERO 351W P717811
AWL WESTERN LASS 11M

DORA LEE RED KNIGHT
BHR IRON MAIDEN L070
OSF MR ALTA 33M
JNR'S MARTINA
BAR 5 SA HERO 823M
BHR HELGA M328E
ELTON POLLED WESTERN 23H
BAR 5 MS THUNDER 636H

BW: 95. 205 day: 781. 365 day: 1266. EPDs Spring 2012: 0.8 6.3 40.6 61.1 4.3 35.2 14.9



4. **BIG HILLS HALAK 670Y**

FULLBLOOD MALE
759143
Horned Full Fleckvieh.

TWIN
BHDM 670Y

15 January 2011

DOUBLE BAR D EVEREST 4R
DOUBLE BAR D EVEREST 76T P683722
DOUBLE BAR D ELMA 4M

ANCHOR "T" METRO 4E
RENDEVOUS 97N 612274
RENDEVOUS MS MEISTER

EMIL
DOUBLE BAR D LYNN 89M
ATFR KAPTAIN 67D
ANCHOR "T" ELMA 26K
METRO
GISELA
MFL MEISTER 36Y
RICHMOND MISS KARL 46H

BW: 92. 205 day: 786. 365 day: 1278. EPDs Spring 2012: 6.0 2.6 29.2 52.6 2.2 30.8 16.2

5





BAR 5 P SA EXPERT 826M PT598604
 ANDERLAND MATIAS-POENA
 TOVERBERG ERIKA

SAVANNAH T623039
 KYKSO HAPED
 DAN-JACO ERNA 5DE

BW: 105. EPDs Spring 2012: 3.5 4.9 37.5 56.3 4.2 34.4 15.6

ELDORADO
 ANDERLAND FEMMI
 KYKSO KALGER
 TOVERBERG ELSA
 KYKSO HADAU
 KYKSO PEDODI
 BENZ
 DAN-JACO ERNA 76

5. BIG HILLS TIN MAN 699Y

SCURRED FULLBLOOD MALE
 S759147

BHDM 699Y

30 January 2011

Scurred Full Fleckvieh, Full South African. Full Brother to Big Hills Ironman 158T



BAR 5 MAGICAL 855T T705631
 NAWINA GLOBAL P
 JAHDAL IRENE

BIG HILLS LADY STOUT 131T P691280
 AWL STOUT EISENHERZ 37M
 AWL SAL STALONE 4M

BW: 93. EPDs Spring 2012: 4.8 3.8 32.3 55.7 5.6 29.3 13.1

TOVERBERG GLOBAL MAGIC
 ELDANDI GEZMI
 SALERIKA MIVAN 2DE
 JAHDAL ISA
 EISENHERZ
 DOUBLE BAR D SANDY 26L
 BAR 5 STALLONE 254E
 AWL MS ENFORCER 16J

6. BIG HILLS MAGICAL 547X

POLLED FULLBLOOD MALE
 P759022

BHDM 547X

2 September 2010

7. BIG HILLS MAGIC 551X

SCURRED FULLBLOOD MALE
P759131

BHDM 551X

6 September 2010

NAWINA GLOBAL P
BAR 5 MAGICAL 855T T705631
JAHDAL IRENE

AWL STOUT EISENHERZ 37M
BIG HILLS LADY STOUT 34S P684952
AWL EMPRESS 3J

TOVERBERG GLOBAL MAGIC
ELDANDI GEZMI
SALERIKA MIVAN 2DE
JAHDAL ISA
EISENHERZ
DOUBLE BAR D SANDY 26L
EMPEROR
SHADYCREEK QUEENIE

BW: 91.

EPDs Spring 2012: 4.3 4.2 31.9 54.4 4.8 29.8 13.9



8. BIG HILLS IRON MAN 556X

POLLED FULLBLOOD MALE
P758901

BHDM 556X

9 September 2010

BAR 5 P SA EXPERT 826M
BIG HILLS IRONMAN 158T 684890
SAVANNAH

RICHWOOD BRUNO 809G
AWL BLONDIE 4L P579761
AWL MS ENFORCER 16J

ANDERLAND MATIAS-POENA
TOVERBERG ERIKA
KYSO HAPED
DAN-JACO ERNA 5DE
RICHWOOD TOPHAND 809C
MARYWOOD BURNADETTE
BAR 5 MR ENFORCER 309C
BAR 5 MS FLECK BEST 390Z

BW: 91.

EPDs Spring 2012: 3.8 4.5 35.1 55.8 6.1 31.4 13.9



9. BIG HILLS MAGICAL 561X

POLLED FULLBLOOD MALE
P758904

BHDM 561X

10 September 2010

NAWINA GLOBAL P
BAR 5 MAGICAL 855T T705631
JAHDAL IRENE

AWL EMPEROR 9H
AWL EMPRESS 8M P579774
MS ENFORCER 4G

TOVERBERG GLOBAL MAGIC
ELDANDI GEZMI
SALERIKA MIVAN 2DE
JAHDAL ISA
EMPEROR
DAYTON'S POL STAR 15B
BAR 5 MR ENFORCER 1261D
BAR S 60B

BW: 89.

EPDs Spring 2012: 3.3 4.2 35.5 56.5 4.6 29.4 11.6



10. BIG HILLS MAGICAL 564X

POLLED FULLBLOOD MALE
P758999

BHDM 564X

11 September 2010

NAWINA GLOBAL P
BAR 5 MAGICAL 855T T705631
JAHDAL IRENE

AWL EXTRAORDINAIRE 1N
AWL STYLE 75R P649179
MRL MISS 380M

TOVERBERG GLOBAL MAGIC
ELDANDI GEZMI
SALERIKA MIVAN 2DE
JAHDAL ISA
GRINALTA'S EXTRAORDINAIRE
RICH MC MS EISENHERZ 4L
MRL RINGO 16 H
MISS MRL 645J

BW: 108.

EPDs Spring 2012: 2.0 5.6 42.0 68.0 3.7 33.6 12.6





11. BIG HILLS EVEREST 567X

POLLED FULLBLOOD MALE
P758943

BHDM 567X

12 September 2010

DOUBLE BAR D EVEREST 4R
DOUBLE BAR D EVEREST 76T P683722
DOUBLE BAR D ELMA 4M

DOUBLE BAR D MAX 20L
AWL MISS 15P P674051
AWL STARLET 15E

EMIL
DOUBLE BAR D LYNN 89M
ATFR KAPTAIN 67D
ANCHOR "T" ELMA 26K
BAR NONE MAXIMIZER
TVP LILLIAN 78G
HARKAWAY MR STAR 38Z
CJB MISS DOLLY 12Z

BW: 92.

EPDs Spring 2012: 6.3 2.0 29.8 52.4 5.3 28.2 13.3



12. BIG HILLS MAGICAL 570X

FULLBLOOD MALE
758974

BHDM 570X

13 September 2010

NAWINA GLOBAL P
BAR 5 MAGICAL 855T T705631
JAHDAL IRENE

AWL EXTRAORDINAIRE 1N
AWL EDN 29R P649167
AWL STARLET 13G

TOVERBERG GLOBAL MAGIC
ELDANDI GEZMI
SALERIKA MIVAN 2DE
JAHDAL ISA
GRINALTA'S EXTRAORDINAIRE
RICH MC MS EISENHERZ 4L
HARKAWAY MR STAR 38Z
EDN RAYLA 111B

BW: 95.

EPDs Spring 2012: 2.3 5.4 39.2 57.6 4.1 34.3 14.7

\$2,400.00



13. BIG HILLS IRON MAN 571X

POLLED FULLBLOOD MALE
P759012

BHDM 571X

14 September 2010

BAR 5 P SA EXPERT 826M
BIG HILLS IRONMAN 158T 684890
SAVANNAH

AWL STOUT EISENHERZ 37M
BIG HILLS LADY STOUT 25S P684950
ASP MS JUSTICE 14N

ANDERLAND MATIAS-POENA
TOVERBERG ERIKA
KYKSO HAPED
DAN-JACO ERNA 5DE
EISENHERZ
DOUBLE BAR D SANDY 26L
PORTERHOUSE JUSTICE 80J
DVA MS KODIAK 88E

BW: 92.

EPDs Spring 2012: 3.8 4.7 37.0 58.7 5.3 33.3 14.7

\$2,750.00



14. BIG HILLS IRON MAN 580X

POLLED FULLBLOOD MALE
P758946

TWIN
BHDM 580X

16 September 2010

BAR 5 P SA EXPERT 826M
BIG HILLS IRONMAN 158T 684890
SAVANNAH

DFM MARCUS 14M
AWL MS 31P P671879
AWL WESTERN LASS 15K

ANDERLAND MATIAS-POENA
TOVERBERG ERIKA
KYKSO HAPED
DAN-JACO ERNA 5DE
GRINALTA'S GRIDIRON 403J
DFM KATHLEEN 41K
ELTON POLLED WESTERN 23H
AWL STARLET 13G

BW: 85.

EPDs Spring 2012: 3.0 5.4 39.4 59.7 3.4 37.2 17.5

\$2,500.00

15. BIG HILLS MAGICAL 583X

FULLBLOOD MALE
759177

BHDM 583X

18 September 2010

NAWINA GLOBAL P
BAR 5 MAGICAL 855T 705631
JAHDAL IRENE

AWL STOUT EISENHERZ 37M
BIG HILLS LADY STOUT 165T P691271
AWL ACE 39P

TOVERBERG GLOBAL MAGIC
ELDANDI GEZMI
SALERIKA MIVAN 2DE
JAHDAL ISA
EISENHERZ
DOUBLE BAR D SANDY 26L
MRL ACE 27G
MRL MISS 380M

BW: 105.

EPDs Spring 2012: 5.5 3.6 36.3 62.7 5.2 33.4 15.3



\$3,400.00

16. BIG HILLS IRON MAN 589X

POLLED FULLBLOOD MALE
P758962

BHDM 589X

21 September 2010

BAR 5 P SA EXPERT 826M
BIG HILLS IRONMAN 158T 684890
SAVANNAH

AWL EMPEROR 9H
AWL MS 44P P671889
AWL MS BRUNETTE 8K

ANDERLAND MATIAS-POENA
TOVERBERG ERIKA
KYKSO HAPED
DAN-JACO ERNA 5DE
EMPEROR
DAYTON'S POL STAR 15B
RICHWOOD BRUNO 809G
BAR 5 MS THUNDER 636H

BW: 92.

EPDs Spring 2012: 5.3 3.4 32.3 50.5 5.1 28.2 12.0



\$2,500.00

17. BIG HILLS MAGICAL 593X

FULLBLOOD MALE
759130

BHDM 593X

25 September 2010

NAWINA GLOBAL P
BAR 5 MAGICAL 855T 705631
JAHDAL IRENE

AWL STOUT EISENHERZ 37M
AWL STYLISH 23R P649107
AWL KARLA 15J

TOVERBERG GLOBAL MAGIC
ELDANDI GEZMI
SALERIKA MIVAN 2DE
JAHDAL ISA
EISENHERZ
DOUBLE BAR D SANDY 26L
GREAT GUNS KARL 17C
MS ENFORCER 4G

BW: 98.

EPDs Spring 2012: 3.5 5.0 37.9 63.4 5.4 33.5 14.5



\$2,600.00

18. BIG HILLS IRON MAN 598X

FULLBLOOD MALE
759129

BHDM 598X

30 September 2010

BAR 5 P SA EXPERT 826M
BIG HILLS IRONMAN 158T 684890
SAVANNAH

CROSSROAD MAVERICK 112L
AWL ACE 40P 656512
MRL MISS 363M

ANDERLAND MATIAS-POENA
TOVERBERG ERIKA
KYKSO HAPED
DAN-JACO ERNA 5DE
ABR SIR ARNOLDS IMAGE
IPU MS. FRANCESCA 7J
MRL RINGO 16 H
MISS MRL 291F

BW: 96.

EPDs Spring 2012: 3.5 3.9 34.6 50.1 4.9 30.4 13.0



\$2,600.00



19. BIG HILLS MAGICAL 606X

POLLED FULLBLOOD MALE
P759034

BHDM 606X

4 October 2010

NAWINA GLOBAL P
BAR 5 MAGICAL 855T T705631
JAHDAL IRENE

MFI JAHARI RENO 68R
BIGHILLS LADY JAHARI 265U P696003
AWL MS DY 3H

TOVERBERG GLOBAL MAGIC
ELDANDI GEZMI
SALERIKA MIVAN 2DE
JAHDAL ISA
SHAWACRES JAHARI 50L
ANCHOR "T" MIKA 97L
FS MR DYNASTY 345C
DOOLITTLE 37D

BW: 109.

EPDs Spring 2012: 0.3 7.4 48.1 75.2 4.8 35.6 11.5



20. BIG HILLS MAGICAL 608X

POLLED FULLBLOOD MALE
P758979

BHDM 608X

7 October 2010

NAWINA GLOBAL P
BAR 5 MAGICAL 855T T705631
JAHDAL IRENE

AWL STOUT EISENHERZ 37M
AWL STYLE 62R P649118
AWL EMPRESS 3J

TOVERBERG GLOBAL MAGIC
ELDANDI GEZMI
SALERIKA MIVAN 2DE
JAHDAL ISA
EISENHERZ
DOUBLE BAR D SANDY 26L
EMPEROR
SHADYCREEK QUEENIE

BW: 94.

EPDs Spring 2012: 3.0 4.6 32.5 55.2 4.4 30.3 14.0

21. BIG HILLS RITCHIE 613X

POLLED FULLBLOOD MALE
P758898

BHDM 613X

14 October 2010

BAR 5 P SA EXPERT 826M
BIG HILLS IRONMAN 158T 684890
SAVANNAH

RICHWOOD BRUNO 809G
AWL MS BRUNETTE 8K PT579482
BAR 5 MS THUNDER 636H

ANDERLAND MATIAS-POENA
TOVERBERG ERIKA
KYKSO HAPED
DAN-JACO ERNA 5DE
RICHWOOD TOPHAND 809C
MARYWOOD BURNADETTE
RICHMOND MR THUNDER 13D
BAR 5 MS DYNAMIC 411F

BW: 97.

EPDs Spring 2012: 4.8 4.1 37.4 59.5 6.1 31.6 12.9



22. BIG HILLS MAGICAL 616X

POLLED FULLBLOOD MALE
P759017

BHDM 616X

18 October 2010

NAWINA GLOBAL P
BAR 5 MAGICAL 855T T705631
JAHDAL IRENE

AWL STOUT EISENHERZ 37M
BIG HILLS LADY STOUT 60S P684967
AWL TOPGIRL 15H

TOVERBERG GLOBAL MAGIC
ELDANDI GEZMI
SALERIKA MIVAN 2DE
JAHDAL ISA
EISENHERZ
DOUBLE BAR D SANDY 26L
AWL TOPHAND 1F
AWL MS ROJO 6D

BW: 100.

EPDs Spring 2012: 3.5 4.4 36.4 61.2 4.9 33.4 15.1

23. BIG HILLS MAGICAL 617X

POLLED FULLBLOOD MALE
P758978

BHDM 617X

20 October 2010

NAWINA GLOBAL P
BAR 5 MAGICAL 855T T705631
JAHDAL IRENE

AWL EXTRAORDINAIRE 1N
AWL ORRIE 49R P649170
AWL WESTERN LASS 15K

TOVERBERG GLOBAL MAGIC
ELDANDI GEZMI
SALERIKA MIVAN 2DE
JAHDAL ISA
GRINALTA'S EXTRAORDINAIRE
RICH MC MS EISENHERZ 4L
ELTON POLLED WESTERN 23H
AWL STARLET 13G

BW: 97,
EPDs Spring 2012: 1.5 6.1 41.7 69.5 3.4 34.8 14.0



\$2,600.00

24. BIG HILLS IRON MAN 623X

POLLED FULLBLOOD MALE
P758976

BHDM 623X

25 October 2010

BAR 5 P SA EXPERT 826M
BIG HILLS IRONMAN 158T 684890
SAVANNAH

AWL EXTRAORDINAIRE 1N
AWL 32R P649168
AWL MS ROJO 6D

ANDERLAND MATIAS-POENA
TOVERBERG ERIKA
KYKSO HAPED
DAN-JACO ERNA 5DE
GRINALTA'S EXTRAORDINAIRE
RICH MC MS EISENHERZ 4L
SWITZ POL SENOR ROJO
SOFTWINDS TALLULA

BW: 96,
EPDs Spring 2012: 2.5 5.3 37.1 58.4 3.4 32.5 13.9



\$2,500.00

25. BIG HILLS TURBO 641Y

POLLED FULLBLOOD MALE
P759219

BHDM 641Y

6 January 2011

DOUBLE BAR D EVEREST 4R
DOUBLE BAR D EVEREST 76T P683722
DOUBLE BAR D ELMA 4M

AWL RUFUS EISENHERZ 25M
AWL MARIE 8R P649098
SBSF MARLA 31M

EMIL
DOUBLE BAR D LYNN 89M
ATFR KAPTAIN 67D
ANCHOR "T" ELMA 26K
EISENHERZ
BAR NONE BONNIE LASS
MRL ALERO 34K
SBSF MS AWESUM 4F

BW: 93. 205 day: 802. 365 day: 1350.
EPDs Spring 2012: 6.0 2.3 25.3 49.8 4.7 27.0 14.3



\$2,000.00

26. BIG HILLS TORQUE 659Y

FULLBLOOD MALE
759243

BHDM 659Y

10 January 2011

DOUBLE BAR D EVEREST 4R
DOUBLE BAR D EVEREST 76T P683722
DOUBLE BAR D ELMA 4M

AWL STOUT EISENHERZ 37M
BIG HILLS LADY STOUT 54S P684964
AWL ACE 39P

EMIL
DOUBLE BAR D LYNN 89M
ATFR KAPTAIN 67D
ANCHOR "T" ELMA 26K
EISENHERZ
DOUBLE BAR D SANDY 26L
MRL ACE 27G
MRL MISS 380M

BW: 90. 205 day: 864. 365 day: 1397.
EPDs Spring 2012: 7.3 1.9 27.2 51.0 5.1 29.2 15.6



\$2,400.00



27. BIG HILLS MAGICAL 661Y

POLLED FULLBLOOD MALE
P759149

BHDM 661Y

11 January 2011

NAWINA GLOBAL P
BAR 5 MAGICAL 855T T705631
JAHDAL IRENE

DOUBLE BAR D LINCOLN
AWL MS 29P P671876
AWL LEXY 8H

TOVERBERG GLOBAL MAGIC
ELDANDI GEZMI
SALERIKA MIVAN 2DE
JAHDAL ISA
PRL PORTERHOUSE REGENT
BAR NONE FENELLA
HVR LEXUS D372
SHADYCREEK QUEENIE

BW: 101. 205 day: 770. 365 day: 1253.
EPDs Spring 2012: 3.0 4.8 33.2 57.7 6.4 28.8 12.2



28. BIG HILLS MAGICAL 662Y

FULLBLOOD MALE
759275

BHDM 662Y

12 January 2011

NAWINA GLOBAL P
BAR 5 MAGICAL 855T T705631
JAHDAL IRENE

BIG HILLS SUPER HERO 1R
BIG HILLS LADY HERO 236U P695936
AWL STYLISH 23R

TOVERBERG GLOBAL MAGIC
ELDANDI GEZMI
SALERIKA MIVAN 2DE
JAHDAL ISA
BAR 5 SA HERO 823M
BHR HELGA M328E
AWL STOUT EISENHERZ 37M
AWL KARLA 15J

BW: 103. 205 day: 823. 365 day: 1378.
EPDs Spring 2012: 2.8 5.6 40.3 66.2 4.3 34.8 14.6



29. BIG HILLS SIERRA 672Y

POLLED FULLBLOOD MALE
P759254

BHDM 672Y

15 January 2011

NAWINA GLOBAL P
BAR 5 MAGICAL 855T T705631
JAHDAL IRENE

AWL STOUT EISENHERZ 37M
BIG HILLS LADY STOUT 181T P691308
RKTF EXPRESSION 24N

TOVERBERG GLOBAL MAGIC
ELDANDI GEZMI
SALERIKA MIVAN 2DE
JAHDAL ISA
EISENHERZ
DOUBLE BAR D SANDY 26L
ANCHOR "T" EXPRESS 33H
KWA MS CONSTRUCTOR 43C

BW: 93. 205 day: 793. 365 day: 1242.
EPDs Spring 2012: 3.3 4.7 34.2 56.3 5.1 34.3 17.2

\$2,200.00



30. BIG HILLS STOUT 683Y

FULLBLOOD MALE
759238

TWIN
BHDM 683Y

22 January 2011

EISENHERZ
AWL STOUT EISENHERZ 37M PT624920
DOUBLE BAR D SANDY 26L

GIDSCO APPOLLO 3F
BIG SKY SAMMY 36S 663470
RJRS MISS LAREDO 450P

ECKHOLM 41053
037131389
BAR NONE MAXIMIZER
RICHMOND MISS ZUMUTO 40F
ANTONIUS
MFL BRENDA 65B
CEN LAREDO 519L
BAR NONE BERNADETTE 2

BW: 81. 205 day: 710. 365 day: 1215.
EPDs Spring 2012: 5.3 3.3 31.7 51.5 7.1 30.5 14.7
Horned Full Fleckvieh.

31. BIG HILLS STOUT 684Y

FULLBLOOD MALE
759239

TWIN
BHDM 684Y

22 January 2011

EISENHERZ
AWL STOUT EISENHERZ 37M PT624920
DOUBLE BAR D SANDY 26L

GIDSCO APPOLLO 3F
BIG SKY SAMMY 36S 663470
RJRS MISS LAREDO 450P

ECKHOLM 41053
037131389
BAR NONE MAXIMIZER
RICHMOND MISS ZUMUTO 40F
ANTONIUS
MFL BRENDA 65B
CEN LAREDO 519L
BAR NONE BERNADETTE 2

BW: 79. 205 day: 693. 365 day: 1195.
EPDs Spring 2012: 5.3 3.3 31.7 51.5 7.1 30.5 14.7
Horned Full Fleckvieh.



32. BIG HILLS STOUT 691Y

POLLED FULLBLOOD MALE
P759250

BHDM 691Y

24 January 2011

EISENHERZ
AWL STOUT EISENHERZ 37M PT624920
DOUBLE BAR D SANDY 26L

SANMAR POLLED PHARAO 12P
BIGHILLS LADY PHARAO 132T P691281
AWL MS BRUNETTE 8K

ECKHOLM 41053
037131389
BAR NONE MAXIMIZER
RICHMOND MISS ZUMUTO 40F
ABR SIR ARNOLDS IMAGE
SANMAR POL TEARDROP 12M
RICHWOOD BRUNO 809G
BAR 5 MS THUNDER 636H

BW: 88. 205 day: 790. 365 day: 1260.
EPDs Spring 2012: 7.8 1.6 25.4 44.5 6.3 26.7 14.0



\$3,000.00

33. BIG HILLS BARON 692Y

POLLED FULLBLOOD MALE
P759137

BHDM 692Y

27 January 2011

KYKSO HADAU
BHR BARON SA 2842P T645655
TRANS-MAGALIES MABIE

ELTON POLLED WESTERN 23H
AWL WESTERN LASS 11M P610904
BAR 5 MS THUNDER 636H

HAGEN
KYKSO DAUNE 78
JAHDAL IBBIE
TRANS-MAGALIES MAJA
SIM-ROC C&B WESTERN
ELTON MS POLLED CHARM 28C
RICHMOND MR THUNDER 13D
BAR 5 MS DYNAMIC 411F

BW: 107. 205 day: 837. 365 day: 1363.
EPDs Spring 2012: 2.5 5.0 36.8 59.5 3.5 29.2 10.8



\$2,750.00

34. BIG HILLS EVEREST 702Y

POLLED FULLBLOOD MALE
P759233

BHDM 702Y

2 February 2011

DOUBLE BAR D EVEREST 4R
DOUBLE BAR D EVEREST 76T P683722
DOUBLE BAR D ELMA 4M

AWL STOUT EISENHERZ 37M
BIG HILLS LADY STOUT 1S P684938
AWL EXTRA LASS 21M

EMIL
DOUBLE BAR D LYNN 89M
ATFR KAPTAIN 67D
ANCHOR "T" ELMA 26K
EISENHERZ
DOUBLE BAR D SANDY 26L
GRINALTA'S EXTRAORDINAIRE
AWL EMPRESS 12H

BW: 105. 205 day: 900. 365 day: 1460.
EPDs Spring 2012: 6.5 2.1 23.8 46.1 4.0 26.8 14.9





\$2,500.00

35. BIG HILLS STEINADLER 705Y

POLLED FULLBLOOD MALE
P759268

BHDM 705Y

4 February 2011

STACHUS
STEINADLER P689251
HITZE

DFM MARCUS 14M
SKYRIDGE SABRINA 3U P705880
MJH SERENA

BW: 80. 205 day: 795. 365 day: 1257.
EPDs Spring 2012: 4.0 2.6 30.3 49.9 3.9 28.6 13.4

STAKKATO
OLGA
EMU
HUMANA
GRINALTA'S GRIDIRON 403J
DFM KATHLEEN 41K
GIDSCO APPOLLO 3F
TRI G MS MOSES 3K



36. BIG HILLS PRICE 706Y

POLLED FULLBLOOD MALE
P759227

BHDM 706Y

5 February 2011

NAWINA GLOBAL P
BAR 5 MAGICAL 855T T705631
JAHDAL IRENE

AWL EXTRAORDINAIRE 1N
AWL ORRIE 57R P649173
AWL MS BRUNETTE 8K

BW: 107. 205 day: 942. 365 day: 1497.
EPDs Spring 2012: 2.0 5.5 39.3 66.8 3.9 32.8 13.1

TOVERBERG GLOBAL MAGIC
ELDANDI GEZMI
SALERIKA MIVAN 2DE
JAHDAL ISA
GRINALTA'S EXTRAORDINAIRE
RICH MC MS EISENHERZ 4L
RICHWOOD BRUNO 809G
BAR 5 MS THUNDER 636H



37. BIG HILLS ROY 708Y

POLLED FULLBLOOD MALE
P759136

BHDM 708Y

6 February 2011

BAR 5 P SA EXPERT 826M
BIG HILLS IRONMAN 158T 684890
SAVANNAH

RICHWOOD BRUNO 809G
AWL BRUNETTE 22K P545873
MISS ACCELERATOR 354B

BW: 110. 205 day: 920. 365 day: 1481.
EPDs Spring 2012: 2.5 5.4 44.9 74.1 5.7 37.8 15.3

ANDERLAND MATIAS-POENA
TOVERBERG ERIKA
KYKSO HAPED
DAN-JACO ERNA 5DE
RICHWOOD TOPHAND 809C
MARYWOOD BURNADETTE
BAR 5 ACCELERATION 372Y
G7 MS GREER 10Z



\$2,300.00

38. BIG HILLS TUG 717Y

POLLED FULLBLOOD MALE
P759138

BHDM 717Y

10 February 2011

EISENHERZ
AWL STOUT EISENHERZ 37M PT624920
DOUBLE BAR D SANDY 26L

SMITHBILT FREIGHTLINER91J
MRL MISS 351M P583157
MISS MRL 649J

BW: 90. 205 day: 760. 365 day: 1214.
EPDs Spring 2012: 7.3 2.2 25.6 39.6 6.1 23.9 11.1

ECKHOLM 41053
037131389
BAR NONE MAXIMIZER
RICHMOND MISS ZUMUTO 40F
BEL WESTERN UNION 5Z
SRN MS UNIVERSE 1C
IPU REDWOOD 19F
MISS MRL 211 D

39. BIG HILLS MAGICAL 726Y

POLLED FULLBLOOD MALE
P759274

BHDM 726Y

27 February 2011

NAWINA GLOBAL P
BAR 5 MAGICAL 855T T705631
JAHDAL IRENE

AWL STOUT EISENHERZ 37M
BIG HILLS LADY STOUT 232U P695930
AWL MS 29P

BW: 99. 205 day: 843. 365 day: 1383.
EPDs Spring 2012: 5.5 3.4 30.4 53.7 5.9 29.3 14.0

TOVERBERG GLOBAL MAGIC
ELDANDI GEZMI
SALERIKA MIVAN 2DE
JAHDAL ISA
EISENHERZ
DOUBLE BAR D SANDY 26L
DOUBLE BAR D LINCOLN
AWL LEXY 8H



\$3,100.00

40. BIG HILLS ERNEST 628Y

POLLED FULLBLOOD MALE
P759228

BHDM 628Y

1 January 2011

DOUBLE BAR D EVEREST 4R
DOUBLE BAR D EVEREST 76T P683722
DOUBLE BAR D ELMA 4M

AWL EXTRAORDINAIRE 1N
AWL ORRIE 59R P649174
AWL EMPRESS 1J

BW: 92. 205 day: 791. 365 day: 1344.
EPDs Spring 2012: 3.5 3.9 28.7 50.6 2.7 26.7 12.3

EMIL
DOUBLE BAR D LYNN 89M
ATFR KAPTAIN 67D
ANCHOR "T" ELMA 26K
GRINALTA'S EXTRAORDINAIRE
RICH MC MS EISENHERZ 4L
EMPEROR
AWL MISS ENFORCER 6G



\$2,600.00



\$3,000.00

41. BIG HILLS MOTTS 645Y

POLLED PUREBRED MALE
PG759248

BHDM 645Y

7 January 2011

BOZ REDCOAT
ANKONIAN RED CAESAR PT6670682
GFI CANDACE G51

LFE RED TANKER 490P
BIG SKY TAYLOR 110T P6677377
KWD MS QUORUM 16N

BW: 97. 205 day: 818. 365 day: 1365. EPDs Spring 2012: 6.5 2.8 44.3 80.0 5.2 28.9 6.7

15

HERCULES 538P
BOZ RED LADY
GW SOLID FLECK
GFI DELTA DAWN D123
TNT DYNAMITE BLACK L137
LFE LITTLE RED 137H
HOOK'S RED QUORUM 55H
ELTON MS RED ELITE 4L





THSF FREEDOM 300N
KNK/CRSR RED BULL 53T PG713478
 JDJ MISS MACHO 53P

DANA RED ABSOLUTE 44R
CW MS TARA 9T PG684636
 CW MS NATALIE 3N

BW: 102. 205 day: 880. 365 day: 1433.
 EPDs Spring 2012: 3.0 3.5 37.8 70.8 6.9 22.5 3.6

BH TRACKER 998J
 SAFN MISS ZING 02H
 REYNOLDSOON MR MACHO L133
 JDJ 9AS PLAYGIRL 040K
 IPU RED VENTURE 53L
 DANA HONEY 105N
 HOOK'S RED QUORUM 55H
 FOXY KASSIE 37K

42. BIG HILLS GOON 660Y

POLLED PUREBRED MALE
 PG759246

BHDM 660Y

11 January 2011



\$2,500.00

43. BIG HILLS DREAM 574X

SCURRED PUREBRED MALE
 SG759024

BHDM 574X

15 September 2010

CNS DREAM ON L186
SKORS DREAM ON 124U BPG702042
 SKORS BLACK BEAUTY 38N

CDP STING 25R
BIG HILLS LADY STING 153T BPG691274
 AWL MARIE 8R

NICHOLS BLK DESTINY G151
 CNS SHEEZA DREAM K107W
 CZAR MR BLACK KNIGHT 74J
 MISS NOREMAC LCL 53K
 RC STINGER 072K
 X-T DESTINY'S DOLL 16L
 AWL RUFUS EISENHERZ 25M
 SBSF MARLA 31M

BW: 88.
 EPDs Spring 2012: 8.8 1.0 37.2 61.1 5.6 25.0 6.4

44. BIG HILLS CRUSHER 581X

POLLED PUREBRED MALE
 PG759013

BHDM 581X

16 September 2010

TNT TOP CUT P274
BIG HILLS CRUSHER 149T PG684893
 MSC REBECCA

DOUBLE BAR D WARRIOR 143N
BIGHILLS LADY WARRIOR 27S PG684951
 AWL BRUNETTE 22K

TNT FORTUNE BUILDER H122
 MISS ARNOLD K2231
 PVF-CW RAPID FIRE 0195K
 NATASHA
 IPU RED WARRIOR 101L
 DOUBLE BAR D STREET 714G
 RICHWOOD BRUNO 809G
 MISS ACCELERATOR 354B

BW: 97.
 EPDs Spring 2012: 2.3 5.4 46.5 84.6 6.6 29.0 5.7



\$2,500.00

45. BIG HILLS DREAM 596X

POLLED PUREBRED MALE
PG759005

BHDM 596X

29 September 2010

CNS DREAM ON L186
SKORS DREAM ON 124U BPG702042
SKORS BLACK BEAUTY 38N

NLC GOOD A NUFF 33G
BIG HILLS MORGAN 7S P6684941
Z-BAR PANTHEA 38P

NICHOLS BLK DESTINY G151
CNS SHEEZA DREAM K107W
CZAR MR BLACK KNIGHT 74J
MISS NOREMAC LCL 53K
NLC 64Y TOMCAT
NLC A03 AVALINE
OMF LONG CUT J6
ZBAR IDYLLES GAL

BW: 89.
EPDs Spring 2012: 10.0 0.0 32.9 54.6 4.2 20.4 3.9



\$2,800.00

46. BIG HILLS BLACKJACK 611X

POLLED PUREBRED MALE
PG759132

BHDM 611X

12 October 2010

CDP STING 25R
BIG HILLS BLACKJACK 156T BPG684891
CONRAY DEWDROP 1327N

DOUBLE BAR D WARRIOR 143N
BIG HILLS LADY WARR 118T G691287
AWL DOOLITTLE 2ND 8F

RC STINGER 072K
X-T DESTINYS DOLL 16L
ELLINGSON THE ROCK J928
TFED JULIE 527K
IPU RED WARRIOR 101L
DOUBLE BAR D STREET 714G
JFRS PACESETTER 49W
DOOLITTLE 37D

BW: 91.
EPDs Spring 2012: 4.8 3.8 38.6 59.9 5.3 23.5 4.2



\$2,100.00

47. BIG HILLS CRUSHER 550X

POLLED PUREBRED MALE
PG759016

BHDM 550X

5 September 2010

TNT TOP CUT P274
BIG HILLS CRUSHER 149T P6684893
MSC REBECCA

DOUBLE BAR D WARRIOR 143N
BIGHILLS LADY WARRIOR 55S P6684965
AWL MS 19P

TNT FORTUNE BUILDER H122
MISS ARNOLD K2231
PVF-CW RAPID FIRE 0195K
NATASHA
IPU RED WARRIOR 101L
DOUBLE BAR D STREET 714G
MASTERLOC ARMAGEDDON 8J
AWL TOPGIRL 15H

BW: 90.
EPDs Spring 2012: 2.5 5.4 42.3 76.3 5.7 25.4 4.2



\$2,200.00

48. BIG HILLS BROWNING 650Y

POLLED PUREBRED MALE
PG759144

BHDM 650Y

8 January 2011

MV RED LIGHT 406
HOOK'S RED QUORUM 55H P6528539
HOOK'S APPLAUSE 59F

ELLINGSON THE ROCK J928
CONRAY NAPONEE 616N P6616820
CONRAY SWEET PEA 16J

GW-CPL RED ALERT
LEACHMAN RED BALDY Z279
DS BLACK ZINGER 141B
GARST COW D480
MV RED LIGHT 406
ELLINGSON MSAMERICA F708
LEACHMAN PERFECTION 7520
CONRAY PEEWEE 16Z

BW: 100. 205 day: 834. 365 day: 1386.
EPDs Spring 2012: 6.5 0.1 29.6 59.1 3.5 20.0 5.2



\$2,250.00





49. BIG HILLS EVEREST 653Y

POLLED PUREBRED MALE
PG759235

BHDM 653Y

9 January 2011

DOUBLE BAR D EVEREST 4R
DOUBLE BAR D EVEREST 76T P683722
DOUBLE BAR D ELMA 4M

DOUBLE BAR D WARRIOR 143N
BIGHILLS LADY WARRIOR 11S P6684946
AWL DOOLITTLE 2ND 8F

BW: 90. 205 day: 750. 365 day: 1260.
EPDs Spring 2012: 6.3 2.6 26.4 48.0 4.8 24.9 11.6

EMIL
DOUBLE BAR D LYNN 89M
ATFR KAPTAIN 67D
ANCHOR "T" ELMA 26K
IPU RED WARRIOR 101L
DOUBLE BAR D STREET 714G
JFRS PACESETTER 49W
DOOLITTLE 37D



50. BIG HILLS JAGUAR 663Y

POLLED PUREBRED MALE
PG759241

BHDM 663Y

12 January 2011

DRIFTING "M" LP 59L
DOUBLE BAR D JAGUAR 128S PT666059
IPU RED MS NOPHALT 121M

DOUBLE BAR D WARRIOR 143N
BIGHILLS LADY WARRIOR 42S P6684960
AWL MS ENFORCER 16J

BW: 104. 205 day: 794. 365 day: 1310.
EPDs Spring 2012: 7.8 1.8 28.0 53.5 4.8 20.0 6.0

PVF-BF BF26 BLACK JOKER
DRIFTING "M" GRETA 4G
PPSR NOPHALT 20H
TNT MISS JERILYN J322
IPU RED WARRIOR 101L
DOUBLE BAR D STREET 714G
BAR 5 MR ENFORCER 309C
BAR 5 MS FLECK BEST 390Z



51. BIG HILLS RED POWER 666Y

POLLED PUREBRED MALE
PG759290

BHDM 666Y

14 January 2011

MV RED LIGHT 406
HOOK'S RED QUORUM 55H P6528539
HOOK'S APPLAUSE 59F

BIG HILLS CRUSHER 149T
BIG HILLS MS CRUSHER 323W P6717830
MJH GOOSEBERRY

BW: 83. 205 day: 798. 365 day: 1339.
EPDs Spring 2012: 4.8 1.8 39.1 76.8 5.1 23.4 3.8

GW-CPL RED ALERT
LEACHMAN RED BALDY Z279
DS BLACK ZINGER 141B
GARST COW D480
TNT TOP CUT P274
MSC REBECCA
BBS MR PEPPER J59
CRANBERRY

\$3,200.00



52. BIG HILLS JAGUAR 678Y

POLLED PUREBRED MALE
PG759247

BHDM 678Y

18 January 2011

DRIFTING "M" LP 59L
DOUBLE BAR D JAGUAR 128S PT666059
IPU RED MS NOPHALT 121M

BLCC 174R
BIG HILLS RED LADY 102T P6691292
AWL MS 44P

BW: 94. 205 day: 810. 365 day: 1312.
EPDs Spring 2012: 9.3 0.8 28.0 54.6 5.1 21.0 7.0

PVF-BF BF26 BLACK JOKER
DRIFTING "M" GRETA 4G
PPSR NOPHALT 20H
TNT MISS JERILYN J322
MEYERS RED TOP
HF/GFI RUBY RED 33E
AWL EMPEROR 9H
AWL MS BRUNETTE 8K

\$2,500.00



CDP STING 25R
BIG HILLS BLACKJACK 156T BPG684891
 CONRAY DEWDROP 1327N

BLCC 174R
BIG HILLS RED LADY 143T P6691283
 AWL MS 29P

BW: 89 EPDs Spring 2012: 5.3 3.4 36.6 59.1 6.1 23.6 5.3

RC STINGER 072K
 X-T DESTINY'S DOLL 16L
 ELLINGSON THE ROCK J928
 TFED JULIE 527K
 MEYERS RED TOP
 HF/GFI RUBY RED 33E
 DOUBLE BAR D LINCOLN
 AWL LEXY 8H

53. BIG HILLS BAD BOY 546X

BLACK POLLED PUREBRED MALE
 BPG759023

BHDM 546X

2 September 2010



\$3,000.00

CNS DREAM ON L186
SKORS DREAM ON 124U BPG702042
 SKORS BLACK BEAUTY 38N

ELLINGSON THE ROCK J928
CONRAY DEWDROP 1327N P6616881
 TFED JULIE 527K

BW: 94. EPDs Spring 2012: 9.5 -0.3 33.6 51.1 3.7 21.1 4.3

NICHOLS BLK DESTINY G151
 CNS SHEEZA DREAM K107W
 CZAR MR BLACK KNIGHT 74J
 MISS NOREMAC LCL 53K
 MV RED LIGHT 406
 ELLINGSON MSAMERICA F708
 ABC MR MAINSTREAM 520F
 CONRAY CLARISSE 527G

54. BIG HILLS DREAM 615X

BLACK POLLED PUREBRED MALE
 BPG758939

BHDM 615X

16 October 2010



\$2,400.00

DRIFTING "M" LP 59L
DOUBLE BAR D JAGUAR 128S PTG666059
 IPU RED MS NOPHALT 121M

DOUBLE BAR D BLK CRK 86M
WLB 86M RUBY 354R BPG639088
 DCR MS AFTER SHOCK L82

PVF-BF BF26 BLACK JOKER
 DRIFTING "M" GRETA 4G
 PPSR NOPHALT 20H
 TNT MISS JERILYN J322
 GW BLACK CREEK 289J
 TSS BLK MADRISSA 048K
 TNT AFTERSHOCK G404
 DCR MISS ARAPAHOE J136

BW: 91. 205 day: 810. 365 day: 1316. EPDs Spring 2012: 7.3 2.4 36.9 63.8 3.1 26.7 8.2

55. BIG HILLS ARCTIC 704Y

BLACK POLLED PUREBRED MALE
 BPG759231

BHDM 704Y

3 February 2011



\$2,600.00

ANKONIAN RED CAESAR
SKORS BLACK JULIUS 36W BPG719086
 SKORS MS JOKER 7P

HOOK'S RED QUORUM 55H
BIG HILLS LADY QUORUM 2R PG684936
 RKTf EXPRESSION 24N

BOZ REDCOAT
 GFI CANDACE G51
 PVF-BF BF26 BLACK JOKER
 SKORS MISS 40M
 MV RED LIGHT 406
 HOOK'S APPLAUSE 59F
 ANCHOR "T" EXPRESS 33H
 KWA MS CONSTRUCTOR 43C

BW: 100. 205 day: 819 365 day: 1372.
 EPDs Spring 2012: 5.3 2.3 35.3 64.1 5.1 30.5 12.8

56. BIG HILLS SUBBAN 727Y

BLACK POLLED PUREBRED MALE
 BPG759218

BHDM 727Y

1 March 2011

57. BIG HILLS DREAM 553X

BLACK POLLED PUREBRED MALE
BPG759029

BHDM 553X

7 September 2010

CNS DREAM ON L186
SKORS DREAM ON 124U BPG702042
SKORS BLACK BEAUTY 38N

BLCC 174R
BIG HILLS RED LADY 161T P6691269
AWL MISS 15P

NICHOLS BLK DESTINY G151
CNS SHEEZA DREAM K107W
CZAR MR BLACK KNIGHT 74J
MISS NOREMAC LCL 53K
MEYERS RED TOP
HF/GFI RUBY RED 33E
DOUBLE BAR D MAX 20L
AWL STARLET 15E

BW: 90.
EPDs Spring 2012: 9.3 0.3 33.4 54.9 5.3 24.3 7.5



\$2,000.00

58. BIG HILLS BLACKJACK 566X

BLACK POLLED PUREBRED MALE
BPG759021

BHDM 566X

12 September 2010

CDP STING 25R
BIG HILLS BLACKJACK 156T BPG684891
CONRAY DEWDROP 1327N

BLCC 174R
BIG HILLS RED LADY 123T P6691290
AWL ACE 40P

RC STINGER 072K
X-T DESTINY'S DOLL 16L
ELLINGSON THE ROCK J928
TFED JULIE 527K
MEYERS RED TOP
HF/GFI RUBY RED 33E
CROSSROAD MAVERICK 112L
MRL MISS 363M

BW: 91.
EPDs Spring 2012: 5.8 2.7 37.2 57.4 5.8 24.2 5.6



59. BIG HILLS BLACKJACK 549X

BLACK POLLED PUREBRED MALE
BPG759006

BHDM 549X

4 September 2010

CDP STING 25R
BIG HILLS BLACKJACK 156T BPG684891
CONRAY DEWDROP 1327N

DOUBLE BAR D WARRIOR 143N
BIG HILLS LADY WARRIOR 9S P6684943
AWL BRUNETTE 6M

RC STINGER 072K
X-T DESTINY'S DOLL 16L
ELLINGSON THE ROCK J928
TFED JULIE 527K
IPU RED WARRIOR 101L
DOUBLE BAR D STREET 714G
RICHWOOD BRUNO 809G
AWL EMPRESS 3J

BW: 91.
EPDs Spring 2012: 5.3 3.4 37.3 59.8 5.8 23.4 4.7



60. BIG HILLS BLACKJACK 612X

BLACK POLLED PUREBRED MALE
BPG759019

BHDM 612X

13 October 2010

CDP STING 25R
BIG HILLS BLACKJACK 156T BPG684891
CONRAY DEWDROP 1327N

BLCC 174R
BIG HILLS RED LADY 106T P6691293
AWL RED LADY 16R

RC STINGER 072K
X-T DESTINY'S DOLL 16L
ELLINGSON THE ROCK J928
TFED JULIE 527K
MEYERS RED TOP
HF/GFI RUBY RED 33E
DOUBLE BAR D WARRIOR 143N
AWL EMPRESS 21N

BW: 98.
EPDs Spring 2012: 6.0 2.8 36.8 59.0 5.2 23.1 4.7



61. BIG HILLS MAJESTIC 634Y

BLACK POLLED PUREBRED MALE
BPG759289

BHDM 634Y

4 January 2011

GW LUCKY DICE 187H
HOOK'S MAJESTIC 31M BPG703670
HOOK'S KOKO 11K

BIG HILLS BLACKJACK 156T
BIGHILLS MSBLACKJACK 317W BPG717986
BIG HILLS LADY QUORUM 2R

LCHMAN LUCKY BUCK 7049C
407D
NICHOLS BLK DESTINY G151
HOOK'S HOLLY 10H
CDP STING 25R
CONRAY DEWDROP 1327N
HOOK'S RED QUORUM 55H
RKTf EXPRESSION 24N

BW: 93. 205 day: 801. 365 day: 1279.
EPDs Spring 2012: 6.5 2.0 38.8 74.9 4.7 26.3 6.8



62. BIG HILLS THUMPER 664Y

BLACK POLLED PUREBRED MALE
BPG759277

BHDM 664Y

13 January 2011

ANKONIAN RED CAESAR
SKORS BLACK JULIUS 36W BPG719086
SKORS MS JOKER 7P

BIG HILLS BLACK MAGIC 30S
BIG HILLS LADY MAGIC 247U PG695907
CONRAY FOXY 3585N

BOZ REDCOAT
GFI CANDACE G51
PVF-BF BF26 BLACK JOKER
SKORS MISS 40M
TNT DYNAMITE BLACK L137
RKTs BOJANGLE 3P
ABC MR MAINSTREAM 520F
TFED RED ROBIN 2785H

BW: 90. 205 day: 787. 365 day: 1236.
EPDs Spring 2012: 7.3 1.8 35.9 60.4 5.3 27.6 9.7



\$3,000.00

FSS GUTTEN TAG
JNR GRAVITY P696308
JNR'S ALTA MARTINA 406P

SRN BOLD ARNOLD 1X
DCSF BOLD N BRASSIE 3N 601410
MRLN JONA

BW: 108. 205 day: 754. 365 day: 1075.
EPDs Spring 2012: -0.5 6.4 40.2 61.9 4.7 33.3 13.2

DORA LEE RED KNIGHT
BHR IRON MAIDEN L070
OSF MR ALTA 33M
JNR'S MARTINA
KNIGHT CLEO 267U
SRN MS BOLD 80U
POND
MRLN JOHANNA

63. BIG HILLS MS GRAVITY 679Y

POLLED FULLBLOOD FEMALE
P759139

BHDM 679Y

20 January 2011

Open.
Polled Full Fleckvieh.



\$4,500.00

NAWINA GLOBAL P
BAR 5 MAGICAL 855T 705631
 JAHDAL IRENE

AWL EXTRAORDINAIRE 1N
AWL EXTRA LADY P649166
 AWL EMPRESS 5L

BW: 92. 205 day: 730. 365 day: 1125. EPDs Spring 2012: 3.3 4.4 34.0 58.5 3.3 27.8 10.8
 Open.

TOVERBERG GLOBAL MAGIC
 ELDANDI GEZMI
 SALERIKA MIVAN 2DE
 JAHDAL ISA
 GRINALTA'S EXTRAORDINAIRE
 RICH MC MS EISENHERZ 4L
 AWL EMPEROR 9H
 AWL MISS BOLD 2F

64. BIG HILLS MS MAGICAL 680Y

FULLBLOOD FEMALE
 759222

BHDM 680Y

20 January 2011



\$4,500.00

BAR 5 P SA EXPERT 826M
BIG HILLS IRONMAN 158T 684890
 SAVANNAH

AWL EMPEROR 9H
AWL MS 38P P671884
 CJB MISS DOLLY 12Z

BW: 91. 205 day: 740. 365 day: 1128. EPDs Spring 2012: 6.0 2.5 29.1 44.5 4.7 25.1 10.6
 Open.

ANDERLAND MATIAS-POENA
 TOVERBERG ERIKA
 KYKSO HAPED
 DAN-JACO ERNA 5DE
 EMPEROR
 DAYTON'S POL STAR 15B
 BIG DISCOVERY 19U
 BLO MS EXTRA 44T

65. BIG HILLS MISS IRON 689Y

POLLED FULLBLOOD FEMALE
 P759150

BHDM 689Y

24 January 2011



\$4,500.00

EISENHERZ
AWL STOUT EISENHERZ 37M PT624920
 DOUBLE BAR D SANDY 26L

BEL STEWARD 2ND
CHERRY CREEK LENI 26R 639888
 CHERRY CREEK HELGA 16K

ECKHOLM 41053
 037131389
 BAR NONE MAXIMIZER
 RICHMOND MISS ZUMUTO 40F
 STEWARD
 SJFB LIRA
 ANCHOR "T" METRO 4E
 GREAT GUNS JULIA 78F

BW: 104. EPDs Spring 2012: 7.5 0.5 21.0 37.3 3.7 28.9 18.4
 Open.

66. BIG HILLS MISS STOUT 697Y

FULLBLOOD FEMALE
 759224

BHDM 697Y

29 January 2011

Horned Full Fleckvieh.



\$2,200.00

67. BIG HILLS MS EVEREST 545X

POLLED FULLBLOOD FEMALE
 P759128

BHDM 545X

31 August 2010

DOUBLE BAR D EVEREST 4R
DOUBLE BAR D EVEREST 76T P683722
 DOUBLE BAR D ELMA 4M

MRL RINGO 16 H
MRL MISS 380M 581376
 MISS MRL 645J

EMIL
 DOUBLE BAR D LYNN 89M
 ATRF KAPTAIN 67D
 ANCHOR "T" ELMA 26K
 ARNOLD'S ZAMUTWO D9
 JAV MS DAYTIME 17F
 FS MR DYNASTY 345C
 MISS MRL 305F

BW: 91.
 EPDs Spring 2012: 5.0 3.3 32.7 53.6 4.7 29.2 12.8
 Open.



\$2,300.00

68. BIG HILLS MS EVEREST 560X

POLLED FULLBLOOD FEMALE
 P758905

BHDM 560X

10 September 2010

DOUBLE BAR D EVEREST 4R
DOUBLE BAR D EVEREST 76T P683722
 DOUBLE BAR D ELMA 4M

AWL EMPEROR 9H
AWL EMPRESS 13M P579772
 WAYDAMAR LADY STAR 72D

EMIL
 DOUBLE BAR D LYNN 89M
 ATRF KAPTAIN 67D
 ANCHOR "T" ELMA 26K
 EMPEROR
 DAYTON'S POL STAR 15B
 BAR 5 MR POLLED STAR 315B
 WAYDAMAR MISS GALANT 71A

BW: 88.
 EPDs Spring 2012: 4.5 3.0 24.8 44.0 4.4 24.3 11.8
 Open.

69. BIG HILLS MISS MAGICAL 562X

POLLED FULLBLOOD FEMALE
P759026

BHDM 562X

11 September 2010

NAWINA GLOBAL P
BAR 5 MAGICAL 855T T705631
JAHDAL IRENE

AWL MAX EISEN 2N
BIG HILLS LADY MAX 157T P691277
AWL EMPRESS 3J

TOVERBERG GLOBAL MAGIC
ELDANDI GEZMI
SALERIKA MIVAN 2DE
JAHDAL ISA
EISENHERZ
DOUBLE BAR D SANDY 26L
EMPEROR
SHADYCREEK QUEENIE

BW: 90.
EPDs Spring 2012: 3.0 4.6 33.3 56.3 4.4 30.4 13.7
Open.



70. BIG HILLS MS EVEREST 569X

POLLED FULLBLOOD FEMALE
P758903

BHDM 569X

13 September 2010

DOUBLE BAR D EVEREST 4R
DOUBLE BAR D EVEREST 76T P683722
DOUBLE BAR D ELMA 4M

RICHWOOD BRUNO 809G
AWL BRUNETTE 6M P579775
AWL EMPRESS 3J

EMIL
DOUBLE BAR D LYNN 89M
ATFR KAPTAIN 67D
ANCHOR "T" ELMA 26K
RICHWOOD TOPHAND 809C
MARYWOOD BURNADETTE
EMPEROR
SHADYCREEK QUEENIE

BW: 91.
EPDs Spring 2012: 3.8 3.5 28.9 52.7 5.1 28.3 13.8
Open.



71. BIG HILLS MISS BARON 572X

FULLBLOOD FEMALE
759015

BHDM 572X

15 September 2010

KYKSO HADAU
BHR BARON SA 2842P T645655
TRANS-MAGALIES MABIE

BAR 5 P SA EXPERT 826M
BIG HILLS LADY EXPERT 38S P684955
SAVANNAH

HAGEN
KYKSO DAUNE 78
JAHDAL IBBIE
TRANS-MAGALIES MAJA
ANDERLAND MATIAS-POENA
TOVERBERG ERIKA
KYKSO HAPED
DAN-JACO ERNA 5DE

BW: 93.
EPDs Spring 2012: 2.3 5.2 34.8 56.4 3.6 31.2 13.8
Open.
Horned Full Fleckvieh, Full South African. Dam BHDM 38S also sells today!



72. BIG HILLS MS MAGICAL 575X

FULLBLOOD FEMALE
758995

BHDM 575X

15 September 2010

NAWINA GLOBAL P
BAR 5 MAGICAL 855T T705631
JAHDAL IRENE

AWL STOUT EISENHERZ 37M
PAWL STYLISH 70R
AWL EMPRESS 1M

TOVERBERG GLOBAL MAGIC
ELDANDI GEZMI
SALERIKA MIVAN 2DE
JAHDAL ISA
EISENHERZ
DOUBLE BAR D SANDY 26L
EMPEROR
AWL WESTERN LASS 15K

BW: 94.
EPDs Spring 2012: 2.3 5.6 39.5 65.2 4.1 34.0 14.2
Open.





73. BIG HILLS MS MAGICAL 577X

FULLBLOOD FEMALE
759007

BHDM 577X

16 September 2010

NAWINA GLOBAL P
BAR 5 MAGICAL 855T T705631
JAHDAL IRENE

AWL MARK 34P
BIG HILLS LADY MARK 10S P684945
AWL MS 25P

TOVERBERG GLOBAL MAGIC
ELDANDI GEZMI
SALERIKA MIVAN 2DE
JAHDAL ISA
CROSSROAD BENCHMARK 150M
MRL MISS 351M
AWL RUFUS EISENHERZ 25M
AWL EXTRA LASS 21M

BW: 87.
EPDs Spring 2012: 5.0 3.6 33.7 57.2 4.9 30.0 13.1
Open.

\$2,300.00



74. BIG HILLS MS MAGICAL 584X

POLLED FULLBLOOD FEMALE
P759011

BHDM 584X

19 September 2010

NAWINA GLOBAL P
BAR 5 MAGICAL 855T T705631
JAHDAL IRENE

AWL MARK 34P
BIG HILLS LADY MARK 23S P684949
AWL MS 42P

TOVERBERG GLOBAL MAGIC
ELDANDI GEZMI
SALERIKA MIVAN 2DE
JAHDAL ISA
CROSSROAD BENCHMARK 150M
MRL MISS 351M
AWL EMPEROR 9H
AWL EMPRESS 1J

BW: 92.
EPDs Spring 2012: 4.0 4.3 34.4 55.8 5.2 28.2 10.9
Open.

\$2,450.00



75. BIG HILLS MISS IRON 588X

POLLED FULLBLOOD FEMALE
P758965

BHDM 588X

20 September 2010

BAR 5 P SA EXPERT 826M
BIG HILLS IRONMAN 158T 684890
SAVANNAH

AWL EMPEROR 9H
AWL MS 46P P671892
SHADYCREEK QUEENIE

ANDERLAND MATIAS-POENA
TOVERBERG ERIKA
KYKSO HAPED
DAN-JACO ERNA 5DE
EMPEROR
DAYTON'S POL STAR 15B
AWL HIGH FIVE 20A
AWL MS SUPERMAC 24Y

BW: 93.
EPDs Spring 2012: 2.3 5.2 32.5 49.1 4.6 29.2 12.9
Open.

\$2,400.00



76. BIG HILLS MS MAGICAL 591X

POLLED FULLBLOOD FEMALE
P759020

BHDM 591X

23 September 2010

NAWINA GLOBAL P
BAR 5 MAGICAL 855T T705631
JAHDAL IRENE

BIG HILLS SUPER HERO 1R
BIG HILLS LADY HERO 109T P691294
AWL TOPGIRL 48R

TOVERBERG GLOBAL MAGIC
ELDANDI GEZMI
SALERIKA MIVAN 2DE
JAHDAL ISA
BAR 5 SA HERO 823M
BHR HELGA M328E
AWL STOUT EISENHERZ 37M
AWL TOPGIRL 16H

BW: 87.
EPDs Spring 2012: 5.0 4.2 36.3 61.1 4.7 33.9 15.7
Open.

\$2,400.00

77. BIG HILLS MISS IRON 594X

FULLBLOOD FEMALE
759010

BHDM 594X

26 September 2010

BAR 5 P SA EXPERT 826M
BIG HILLS IRONMAN 158T P684890
SAVANNAH

AWL MAX EISEN 2N
BIG HILLS LADY MAX 14S P684947
AWL EMPRESS 13M

ANDERLAND MATIAS-POENA
TOVERBERG ERIKA
KYGSO HAPED
DAN-JACO ERNA 5DE
EISENHERZ
DOUBLE BAR D SANDY 26L
AWL EMPEROR 9H
WAYDAMAR LADY STAR 72D

BW: 90.
EPDs Spring 2012: 4.5 3.9 30.9 48.2 4.7 29.1 13.6
Open.



\$2,300.00

78. BIG HILLS MS EVEREST 595X

FULLBLOOD FEMALE
758998

BHDM 595X

29 September 2010

DOUBLE BAR D EVEREST 4R
DOUBLE BAR D EVEREST 76T P683722
DOUBLE BAR D ELMA 4M

AWL EXTRAORDINAIRE 1N
AWL 74R P649178
MISS ACCELERATOR 346B

EMIL
DOUBLE BAR D LYNN 89M
ATFR KAPTAIN 67D
ANCHOR "T" ELMA 26K
GRINALTA'S EXTRAORDINAIRE
RICH MC MS EISENHERZ 4L
BAR 5 ACCELERATION 372Y
G7 MS GREER 10Z

BW: 90.
EPDs Spring 2012: 7.5 1.6 26.1 51.4 3.9 27.4 14.3
Open.



\$2,250.00

79. BIG HILLS MS EVEREST 604X

POLLED FULLBLOOD FEMALE
P758981

BHDM 604X

4 October 2010

DOUBLE BAR D EVEREST 4R
DOUBLE BAR D EVEREST 76T P683722
DOUBLE BAR D ELMA 4M

MILESTONE ATM MARINER 9M
MILESTONE M KARMEN 66R 642106
MILESTONE KOD KARMEN 61N

EMIL
DOUBLE BAR D LYNN 89M
ATFR KAPTAIN 67D
ANCHOR "T" ELMA 26K
ANCHOR "T" METRO 4E
BAR 5 MS UNIVERSE 267C
PRL KODIAK 24K
KT MISS DIVIDEND 25D

BW: 91.
EPDs Spring 2012: 3.3 3.9 33.1 58.4 3.1 32.9 16.4
Open.



\$2,500.00

80. BIG HILLS MISS IRON 614X

POLLED FULLBLOOD FEMALE
P758897

BHDM 614X

14 October 2010

BAR 5 P SA EXPERT 826M
BIG HILLS IRONMAN 158T P684890
SAVANNAH

RICHWOOD BRUNO 809G
AWL BRUNETTE 1K P545864
AWL LEXY 8H

ANDERLAND MATIAS-POENA
TOVERBERG ERIKA
KYGSO HAPED
DAN-JACO ERNA 5DE
RICHWOOD TOPHAND 809C
MARYWOOD BURNADETTE
HVR LEXUS D372
SHADYCREEK QUEENIE

BW: 100.
EPDs Spring 2012: 4.3 4.1 35.5 58.1 6.1 30.4 12.6
Open.



\$2,200.00



\$2,000.00

81. BIG HILLS MISS STOUT 618X

POLLED FULLBLOOD FEMALE
P759001

TWIN
BHDM 618X

21 October 2010

EISENHERZ
AWL STOUT EISENHERZ 37M PT624920
DOUBLE BAR D SANDY 26L

DFM MARCUS 14M
CHERRY CREEK TERI 7S P656017
CHERRY CREEK TYRA 6M

ECKHOLM 41053
037131389
BAR NONE MAXIMIZER
RICHMOND MISS ZUMUTO 40F
GRINALTA'S GRIDIRON 403J
DFM KATHLEEN 41K
BAR NONE MAINSTREAM
MS DD&E FEMME FATALE 53F

BW: 80.
EPDs Spring 2012: 6.5 2.1 23.9 40.9 5.2 30.2 18.2
Open.
Polled Full Fleckvieh.



\$2,300.00

82. BIG HILLS MISS STOUT 620X

FULLBLOOD FEMALE
758907

TWIN
BHDM 620X

21 October 2010

EISENHERZ
AWL STOUT EISENHERZ 37M PT624920
DOUBLE BAR D SANDY 26L

MRL ALERO 34K
SBSF MARIA 46M P575326
LFE MISS LEWIS 45A

ECKHOLM 41053
037131389
BAR NONE MAXIMIZER
RICHMOND MISS ZUMUTO 40F
BGS HOLLYWOOD 41H
JAV MS DAYTIME 17F
SWITZ POL BUDS CHIEF
LFE MISS LEWIS 61Y

BW: 89.
EPDs Spring 2012: 6.0 2.7 29.2 52.4 6.7 27.2 12.6
Open.



\$2,000.00

83. BIG HILLS MISS STOUT 621X

POLLED FULLBLOOD FEMALE
P758910

TWIN
BHDM 621X

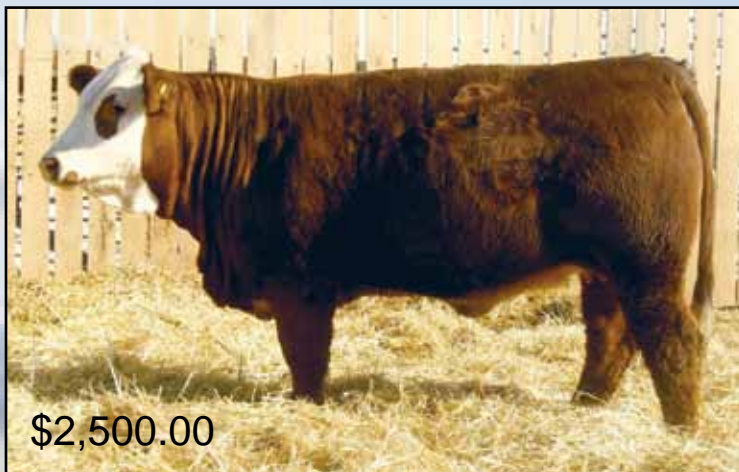
21 October 2010

EISENHERZ
AWL STOUT EISENHERZ 37M PT624920
DOUBLE BAR D SANDY 26L

MRL ALERO 34K
SBSF MARIA 46M P575326
LFE MISS LEWIS 45A

ECKHOLM 41053
037131389
BAR NONE MAXIMIZER
RICHMOND MISS ZUMUTO 40F
BGS HOLLYWOOD 41H
JAV MS DAYTIME 17F
SWITZ POL BUDS CHIEF
LFE MISS LEWIS 61Y

BW: 75.
EPDs Spring 2012: 6.0 2.7 29.2 52.4 6.7 27.2 12.6
Open.



\$2,500.00

84. BIG HILLS MS GRAVITY 629Y

POLLED FULLBLOOD FEMALE
P759286

BHDM 629Y

1 January 2011

FSS GUTTEN TAG
JNR GRAVITY P696308
JNR'S ALTA MARTINA 406P

DOUBLE BAR D MATRIX 121S
BIGHILLS LADY MATRIX 298U 717743
AWL 74R

DORA LEE RED KNIGHT
BHR IRON MAIDEN L070
OSF MR ALTA 33M
JNR'S MARTINA
DOUBLE BARD MAKE M PLLED
DOUBLE BAR D SUSAN 620N
AWL EXTRAORDINAIRE 1N
MISS ACCELERATOR 346B

BW: 79. 205 day: 700. 365 day: 1083.
EPDs Spring 2012: 3.5 4.4 35.3 57.3 4.7 32.0 14.4
Open.

85. BIG HILLS MS EVEREST 632Y

POLLED FULLBLOOD FEMALE
P759220

BHDM 632Y

3 January 2011

DOUBLE BAR D EVEREST 4R
DOUBLE BAR D EVEREST 76T P683722
DOUBLE BAR D ELMA 4M

BEL STEWARD 2ND
CHERRY CREEK MARIDEL 24R 637538
CDP MISS MERCEDES

EMIL
DOUBLE BAR D LYNN 89M
ATFR KAPTAIN 67D
ANCHOR "T" ELMA 26K
STEWARD
SJFB LIRA
ANCHOR "T" LEGEND 7H
BIG SKY'S CLASSIC 53K

BW: 87. 205 day: 650. 365 day: 1071.
EPDs Spring 2012: 7.8 0.5 21.3 40.5 3.8 28.0 17.3

Open.
Polled Full Fleckvieh.



\$3,000.00

86. BIG HILLS MS MAGICAL 633Y

POLLED FULLBLOOD FEMALE
P759276

BHDM 633Y

3 January 2011

NAWINA GLOBAL P
BAR 5 MAGICAL 855T T705631
JAHDAL IRENE

BIG HILLS SUPER HERO 1R
BIG HILLS LADY HERO 244U P695868
AWL MS BRUNETTE 8K

TOVERBERG GLOBAL MAGIC
ELDANDI GEZMI
SALERIKA MIVAN 2DE
JAHDAL ISA
BAR 5 SA HERO 823M
BHR HELGA M328E
RICHWOOD BRUNO 809G
BAR 5 MS THUNDER 636H

BW: 81. 205 day: 660. 365 day: 1031.
EPDs Spring 2012: 3.0 5.4 40.9 67.6 4.9 34.2 13.8

Open.



\$3,900.00

87. BIGHILLS MSSTEINADLER 637Y

POLLED FULLBLOOD FEMALE
P759240

BHDM 637Y

6 January 2011

STACHUS
STEINADLER P689251
HITZE

BEL MOSCOW 300M
DELTA-RHO SHEDAISY FF39S 655801
TRYON JEZEBEL FF12L

STAKKATO
OLGA
EMU
HUMANA
LAKI
BEL BETTI 300J
MFL MEISTER 36Y
JACK PINE BARBI 47F

BW: 80. 205 day: 757. 365 day: 1137.
EPDs Spring 2012: 5.0 1.6 29.0 47.6 3.7 27.8 13.3

Open.
Polled Full Fleckvieh



\$4,300.00

88. BIG HILLS MS EVEREST 642Y

POLLED FULLBLOOD FEMALE
P759226

BHDM 642Y

6 January 2011

DOUBLE BAR D EVEREST 4R
DOUBLE BAR D EVEREST 76T P683722
DOUBLE BAR D ELMA 4M

AWL STOUT EISENHERZ 37M
AWL TOPGIRL 48R P649116
AWL TOPGIRL 16H

EMIL
DOUBLE BAR D LYNN 89M
ATFR KAPTAIN 67D
ANCHOR "T" ELMA 26K
EISENHERZ
DOUBLE BAR D SANDY 26L
AWL TOPHAND 1F
EDN RAYLA 111B

BW: 83. 205 day: 630. 365 day: 980.
EPDs Spring 2012: 9.0 0.7 22.0 43.2 5.7 28.1 17.1

Open.



\$2,900.00



\$2,600.00

89. BIG HILLS MS MAGICAL 646Y

POLLED FULLBLOOD FEMALE
P759278

BHDM 646Y

7 January 2011

NAWINA GLOBAL P
BAR 5 MAGICAL 855T T705631
JAHDAL IRENE

DOUBLE BAR D MATRIX 121S
BIGHILLS LADY MATRIX 249U P695933
AWL MS 42P

TOVERBERG GLOBAL MAGIC
ELDANDI GEZMI
SALERIKA MIVAN 2DE
JAHDAL ISA
DOUBLE BARD MAKE M PLLED
DOUBLE BAR D SUSAN 620N
AWL EMPEROR 9H
AWL EMPRESS 1J

BW: 103. 205 day: 661. 365 day: 1021.
EPDs Spring 2012: 3.8 4.6 36.9 60.7 4.1 30.0 11.5
Open.



\$2,400.00

90. BIG HILLS MS EVEREST 647Y

POLLED FULLBLOOD FEMALE
P759237

BHDM 647Y

8 January 2011

DOUBLE BAR D EVEREST 4R
DOUBLE BAR D EVEREST 76T P683722
DOUBLE BAR D ELMA 4M

AWL STOUT EISENHERZ 37M
BIG HILLS LADY STOUT 22S P684948
AWL STARLET 15E

EMIL
DOUBLE BAR D LYNN 89M
ATER KAPTAIN 67D
ANCHOR "T" ELMA 26K
EISENHERZ
DOUBLE BAR D SANDY 26L
HARKAWAY MR STAR 38Z
CJB MISS DOLLY 12Z

BW: 93. 205 day: 621. 365 day: 967
EPDs Spring 2012: 6.0 2.6 26.5 48.3 5.4 26.7 13.4
Open.



\$2,500.00

91. BIG HILLS MISS IRON 656Y

POLLED FULLBLOOD FEMALE
P759134

BHDM 656Y

10 January 2011

BAR 5 P SA EXPERT 826M
BIG HILLS IRONMAN 158T 684890
SAVANNAH

EMPEROR
AWL EMPRESS 1J P520592
AWL MISS ENFORCER 6G

ANDERLAND MATIAS-POENA
TOVERBERG ERIKA
KYKSO HAPED
DAN-JACO ERNA 5DE
EMSIG
351
BAR 5 MR ENFORCER 309C
AWL STARLET 9B

BW: 106. 205 day: 741. 365 day: 1114.
EPDs Spring 2012: 3.0 4.7 34.6 50.7 2.9 28.1 10.8
Open.



\$2,500.00

92. BIG HILLS MS EVEREST 657Y

FULLBLOOD FEMALE
759236

BHDM 657Y

10 January 2011

DOUBLE BAR D EVEREST 4R
DOUBLE BAR D EVEREST 76T P683722
DOUBLE BAR D ELMA 4M

EDN PUMA 45P
BIG HILLS LADY PUMA 21S 684944
RENDEZVOUS 128P

EMIL
DOUBLE BAR D LYNN 89M
ATER KAPTAIN 67D
ANCHOR "T" ELMA 26K
EMIL
RICOCHET LEEZA 104L
VIRGINIA'S KINGBUSTER 6K
AWL TOPGIRL 4H

BW: 90. 205 day: 725. 365 day: 1086.
EPDs Spring 2012: 6.0 2.5 24.8 47.7 4.7 26.3 13.9
Open.

93. BIG HILLS MS GRAVITY 677Y

FULLBLOOD FEMALE
759292

BHDM 677Y

18 January 2011

FSS GUTTEN TAG
JNR GRAVITY P696308
JNR'S ALTA MARTINA 406P

AWL STOUT EISENHERZ 37M
BIG HILLS MISS STOUT 331W P717834
AWL EMPRESS 29N

DORA LEE RED KNIGHT
BHR IRON MAIDEN L070
OSF MR ALTA 33M
JNR'S MARTINA
EISENHERZ
DOUBLE BAR D SANDY 26L
AWL EMPEROR 9H
CJB MISS DOLLY 12Z

BW: 92. 205 day: 586. 365 day: 911.
EPDs Spring 2012: 1.8 5.0 32.5 50.3 5.6 30.6 14.4
Open.



\$3,200.00

94. BIG HILLS MS EVEREST 681Y

POLLED FULLBLOOD FEMALE
P759229

BHDM 681Y

21 January 2011

DOUBLE BAR D EVEREST 4R
DOUBLE BAR D EVEREST 76T P683722
DOUBLE BAR D ELMA 4M

AWL STOUT EISENHERZ 37M
AWL MISS 68R P674046
DOUBLE BAR D 6 E

EMIL
DOUBLE BAR D LYNN 89M
ATFR KAPTAIN 67D
ANCHOR "T" ELMA 26K
EISENHERZ
DOUBLE BAR D SANDY 26L
MFL BOSS MAN 5A
ACOMBS MS. ROCK 113C

BW: 95. 205 day: 580. 365 day: 900.
EPDs Spring 2012: 4.3 3.7 28.3 51.6 5.1 30.1 15.9
Open.



\$2,300.00

95. BIG HILLS MS MAGICAL 682Y

FULLBLOOD FEMALE
759142

BHDM 682Y

22 January 2011

NAWINA GLOBAL P
BAR 5 MAGICAL 855T T705631
JAHDAL IRENE

AWL EMPEROR 9H
AWL EMPRESS 29N P630813
CJB MISS DOLLY 12Z

TOVERBERG GLOBAL MAGIC
ELDANDI GEZMI
SALERIKA MIVAN 2DE
JAHDAL ISA
EMPEROR
DAYTON'S POL STAR 15B
BIG DISCOVERY 19U
BLO MS EXTRA 44T

BW: 105. 205 day: 669. 365 day: 1043.
EPDs Spring 2012: 3.0 4.4 34.5 56.3 4.9 27.7 10.4
Open.



\$1,800.00

96. BIG HILLS MS GRAVITY 685Y

FULLBLOOD FEMALE
759293

BHDM 685Y

22 January 2011

FSS GUTTEN TAG
JNR GRAVITY P696308
JNR'S ALTA MARTINA 406P

DOUBLE BAR D MATRIX 121S
BIGHILLS MISS MATRIX 332W P718172
BIG HILLS LADY HERO 114T

DORA LEE RED KNIGHT
BHR IRON MAIDEN L070
OSF MR ALTA 33M
JNR'S MARTINA
DOUBLE BAR D MAKE M PLLED
DOUBLE BAR D SUSAN 620N
BIG HILLS SUPER HERO 1R
AWL ORRIE 49R

BW: 85. 205 day: 682. 365 day: 1052.
EPDs Spring 2012: 1.8 5.7 38.5 59.9 4.3 33.8 14.6
Open.



\$2,100.00



\$2,200.00

97. BIG HILLS MISS STOUT 693Y

FULLBLOOD FEMALE
759140

BHDM 693Y

27 January 2011

EISENHERZ
AWL STOUT EISENHERZ 37M PT624920
DOUBLE BAR D SANDY 26L

ANCHOR "T" EXPRESS 33H
RKTF EXPRESSION 24N 612876
KWA MS CONSTRUCTOR 43C

BW: 100. 205 day: 670. 365 day: 1031.
EPDs Spring 2012: 2.8 4.5 28.7 44.0 5.6 33.3 19.0
Open.

ECKHOLM 41053
037131389
BAR NONE MAXIMIZER
RICHMOND MISS ZUMUTO 40F
ANCHOR "T" METRO 4E
MFL BRUTLI 68B
RB CONSTRUCTOR 7L
PHEASANTDALE LADY 27



\$2,400.00

98. BIG HILLS MISS IRON 698Y

FULLBLOOD FEMALE
759148

BHDM 698Y

29 January 2011

BAR 5 P SA EXPERT 826M
BIG HILLS IRONMAN 158T 684890
SAVANNAH

AWL RUFUS EISENHERZ 25M
AWL MS 28P P671874
AWL EMPRESS 8M

BW: 91. 205 day: 682. 365 day: 1098.
EPDs Spring 2012: 4.8 3.7 32.9 50.4 4.6 30.9 14.5
Open.

ANDERLAND MATIAS-POENA
TOVERBERG ERIKA
KYKSO HAPED
DAN-JACO ERNA 5DE
EISENHERZ
BAR NONE BONNIE LASS
AWL EMPEROR 9H
MS ENFORCER 4G



\$3,000.00

99. BIG HILLS MS EVEREST 703Y

FULLBLOOD FEMALE
759234

BHDM 703Y

3 February 2011

DOUBLE BAR D EVEREST 4R
DOUBLE BAR D EVEREST 76T P683722
DOUBLE BAR D ELMA 4M

AWL STOUT EISENHERZ 37M
BIG HILLS LADY STOUT 3S P684940
MRL MISS 363M

BW: 90. 205 day: 648. 365 day: 1020.
EPDs Spring 2012: 6.0 2.5 26.4 46.2 5.2 27.8 14.5
Open.

EMIL
DOUBLE BAR D LYNN 89M
ATFR KAPTAIN 67D
ANCHOR "T" ELMA 26K
EISENHERZ
DOUBLE BAR D SANDY 26L
MRL RINGO 16 H
MISS MRL 291F



\$1,800.00

100. BIG HILLS MISS IRON 707Y

POLLED FULLBLOOD FEMALE
P759135

BHDM 707Y

5 February 2011

BAR 5 P SA EXPERT 826M
BIG HILLS IRONMAN 158T 684890
SAVANNAH

EMPEROR
AWL EMPRESS 3J P525008
SHADYCREEK QUEENIE

BW: 105. 205 day: 701. 365 day: 1075.
EPDs Spring 2012: 1.3 5.6 33.4 51.0 3.6 28.8 12.0
Open.

ANDERLAND MATIAS-POENA
TOVERBERG ERIKA
KYKSO HAPED
DAN-JACO ERNA 5DE
EMSIG
351
AWL HIGH FIVE 20A
AWL MS SUPERMAC 24Y

101. BIG HILLS MISS CHAMP 709Y

POLLED FULLBLOOD FEMALE
P759285

BHDM 709Y

7 February 2011

SHAWACRES RAFIKI 50R
CHAMPS WINSTROL P717720
VIRGINIA POLL BARBI SUE

DOUBLE BAR D MATRIX 121S
BIGHILLS LADY MATRIX 296U P717631
SAVANNAH

BAR 5 KALGERY 402J
SHAW ACRES NYA 3N
DFM MARCUS 14M
ANCHOR "T" BARBI 46K
DOUBLE BARD MAKE M PLLED
DOUBLE BAR D SUSAN 620N
KYKSO HAPED
DAN-JACO ERNA 5D

BW: 84. 205 day: 750. 365 day: 1100.
EPDs Spring 2012: 7.8 2.0 32.8 53.1 3.6 31.2 14.8
Open.
Polled Full Fleckvieh.



\$2,750.00

102. BIG HILLS MS GRAVITY 713Y

SCURRED FULLBLOOD FEMALE
S759297

BHDM 713Y

8 February 2011

FSS GUTTEN TAG
JNR GRAVITY P696308
JNR'S ALTA MARTINA 406P

RU-DEV BRAAM
BAR 5 SA ERIKA 404W T710123
TOVERBERG ERIKA

DORA LEE RED KNIGHT
BHR IRON MAIDEN L070
OSF MR ALTA 33M
JNR'S MARTINA
RU-DEV JIM
RU-DEV BONNIE
KYKSO KALGER
TOVERBERG ELSA

BW: 87. 205 day: 674. 365 day: 1037.
EPDs Spring 2012: 1.3 4.8 37.5 59.7 5.1 35.7 17.0
Open.
Scurred Full Fleckvieh.



\$1,800.00

103. BIG HILLS MISS IRON 716Y

POLLED FULLBLOOD FEMALE
P759267

BHDM 716Y

10 February 2011

BAR 5 P SA EXPERT 826M
BIG HILLS IRONMAN 158T 684890
SAVANNAH

BIG HILLS SUPER HERO 1R
BIG HILLS LADY HERO 187T P691314
AWL MS 25P

ANDERLAND MATIAS-POENA
TOVERBERG ERIKA
KYKSO HAPED
DAN-JACO ERNA 5DE
BAR 5 SA HERO 823M
BHR HELGA M328E
AWL RUFUS EISENHERZ 25M
AWL EXTRA LASS 21M

BW: 95. 205 day: 672. 365 day: 1026.
EPDs Spring 2012: 4.0 4.5 35.9 56.3 3.4 33.1 15.1
Open.



\$2,300.00

104. BIG HILLS MS MAGICAL 722Y

POLLED FULLBLOOD FEMALE
P759230

BHDM 722Y

15 February 2011

NAWINA GLOBAL P
BAR 5 MAGICAL 855T T705631
JAHDAL IRENE

AWL EXTRAORDINAIRE 1N
AWL MS 72R P649176
SHADYCREEK QUEENIE

TOVERBERG GLOBAL MAGIC
ELDANDI GEZMI
SALERIKA MIVAN 2DE
JAHDAL ISA
GRINALTA'S EXTRAORDINAIRE
RICH MC MS EISENHERZ 4L
AWL HIGH FIVE 20A
AWL MS SUPERMAC 24Y

BW: 104. 205 day: 712. 365 day: 1101.
EPDs Spring 2012: -0.8 7.3 40.1 66.1 3.8 33.9 13.8
Open.



\$2,700.00



\$2,700.00

105. BIG HILLS MISS CHAMP 728Y

POLLED FULLBLOOD FEMALE
P759282

BHDM 728Y

3 March 2011

FSS GUTTEN TAG
JNR GRAVITY P696308
JNR'S ALTA MARTINA 406P

DOUBLE BAR D MATRIX 121S
BIGHILLS LADY MATRIX 282U P717742
AWL STYLISH 70R

BW: 82. 205 day: 643. 365 day: 985.
EPDs Spring 2012: 1.8 5.7 37.9 58.8 4.6 33.4 14.5
Open.

DORA LEE RED KNIGHT
BHR IRON MAIDEN L070
OSF MR ALTA 33M
JNR'S MARTINA
DOUBLE BARD MAKE M PLED
DOUBLE BAR D SUSAN 620N
AWL STOUT EISENHERZ 37M
AWL EMPRESS 1M



\$2,850.00

106. BIG HILLS MISS STOUT 729Y

POLLED FULLBLOOD FEMALE
P759269

BHDM 729Y

3 March 2011

EISENHERZ
AWL STOUT EISENHERZ 37M PT624920
DOUBLE BAR D SANDY 26L

SBSF VEGAS 1L
SBSF MS VEGAS 7U 701599
SBSF PRIMROSE 40P

BW: 89. 205 day: 710. 365 day: 1081.
EPDs Spring 2012: 3.5 4.4 38.8 63.7 6.7 34.9 15.5
Open.

Polled Full Fleckvieh.

ECKHOLM 41053
037131389
BAR NONE MAXIMIZER
RICHMOND MISS ZUMUTO 40F
PRL HOUSTON 005H
BAR NONE BONNIE
CROSSROAD BENCHMARK 150M
SBSF MARTINA 20M



\$2,700.00

107. BIG HILLS MISS STOUT 730Y

POLLED FULLBLOOD FEMALE
P759270

BHDM 730Y

10 March 2011

EISENHERZ
AWL STOUT EISENHERZ 37M PT624920
DOUBLE BAR D SANDY 26L

BAR 5 SA EVAN 440L
BIG HILLS LADY EVAN 192U P695999
BIG HILLS LADY EXPERT 38S

BW: 90. 205 day: 601. 365 day: 938.
EPDs Spring 2012: 5.5 3.0 28.1 46.2 4.4 28.6 14.5
Open.

Polled Full Fleckvieh.

ECKHOLM 41053
037131389
BAR NONE MAXIMIZER
RICHMOND MISS ZUMUTO 40F
SALERIKA EVAN
AI-AI SISKA
BAR 5 P SA EXPERT 826M
SAVANNAH



\$2,700.00

108. BIG HILLS MISS DRACO 731Y

FULLBLOOD FEMALE
759299

BHDM 731Y

11 March 2011

KYKSO HAPED
BHR DRACO SA 628N T621436
AI-AI RINA

BAR 5 SA HARRACH 801P
BAR 5 ECHO ZURITA 808U 727821
BAR 5 SA EMARELDA 808R

BW: 89. 205 day: 654. 365 day: 1073.
EPDs Spring 2012: 0.3 4.7 36.6 56.8 2.5 26.7 8.3
Open.

Horned Full Fleckvieh.

KYKSO HADAU
KYKSO PEDODI
VETVEE MASSIEF EMBRIO 3
SALERIKA RETA
BAR 5 SA OPTIMAL 447L
BAR 5 SA LADY SISKA 409M
SALERIKA BESSMAN
TOVERBERG ERIKA



\$4,100.00

109. BIG HILLS MISS DREAM 649Y

POLLED PUREBRED FEMALE
PG759288

BHDM 649Y

8 January 2011

CNS DREAM ON L186
SKORS DREAM ON 124U BPG702042
SKORS BLACK BEAUTY 38N

BIG HILLS EARTHQUAKE 101T
BIG HILLS MS QUAKE 305W SG718176
BIG HILLS RED LADY 123T

NICHOLS BLK DESTINY G151
CNS SHEEZA DREAM K107W
CZAR MR BLACK KNIGHT 74J
MISS NOREMAC LCL 53K
HOOK'S RED QUORUM 55H
BIG SKY RITA 30R
BLCC 174R
AWL ACE 40P

BW: 84. 205 day: 664. 365 day: 1022. EPDs Spring 2012: 11.5 -1.7 29.4 51.4 5.2 21.0 6.3
Open.



\$3,900.00

110. BIG HILLS MS REDBULL 668Y

POLLED PUREBRED FEMALE
PG759146

BHDM 668Y

14 January 2011

THSF FREEDOM 300N
KNK/CRSR RED BULL 53T PG713478
JDJ MISS MACHO 53P

ABC MR MAINSTREAM 520F
CONRAY FOXY 3585N PG616888
TFED RED ROBIN 2785H

BH TRACKER 998J
SAFN MISS ZING 02H
REYNOLDSON MR MACHO L133
JDJ 9AS PLAYGIRL 040K
BAR NONE MAINSTREAM
DCW MISS POLL SIGNAL 18B
BBS ZIMA D55
CONRAY JADE 1385F

BW: 98. 205 day: 721. 365 day: 1111. EPDs Spring 2012: 3.3 3.4 37.0 61.3 6.6 22.1 3.6
Open.





\$2,300.00

111. BIG HILLS MISS CRUSH 544X

POLLED PUREBRED FEMALE
PG759133

BHDM 544X

31 August 2010

TNT TOP CUT P274
BIG HILLS CRUSHER 149T PG684893
MSC REBECCA

CDP STING 25R
BIG HILLS LADY STING 155T PG691276
Z-BAR PANTHEA 38P

TNT FORTUNE BUILDER H122
MISS ARNOLD K2231
PVF-CW RAPID FIRE 0195K
NATASHA
RC STINGER 072K
X-T DESTINY'S DOLL 16L
OMF LONG CUT J6
ZBAR IDYLLES GAL

BW: 82.
EPDs Spring 2012: 2.5 5.3 50.0 85.6 6.7 27.2 2.2
Open.



\$2,300.00

112. BIG HILLS MISS DREAM 548X

POLLED PUREBRED FEMALE
PG759018

BHDM 548X

3 September 2010

CNS DREAM ON L186
SKORS DREAM ON 124U BPG702042
SKORS BLACK BEAUTY 38N

BLCC 174R
BIG HILLS RED LADY 100T PG691291
AWL MISS 38R

NICHOLS BLK DESTINY G151
CNS SHEEZA DREAM K107W
CZAR MR BLACK KNIGHT 74J
MISS NOREMAC LCL 53K
MEYERS RED TOP
HF/GFI RUBY RED 33E
KJLI THE ROCK 1L
AWL BRUNETTE 1K

BW: 86.
EPDs Spring 2012: 8.5 1.1 33.3 55.3 5.7 21.8 5.1
Open.



\$1,500.00

113. BIG HILLS MISS CRUSH 555X

POLLED PUREBRED FEMALE
PG759014

BHDM 555X

7 September 2010

TNT TOP CUT P274
BIG HILLS CRUSHER 149T PG684893
MSC REBECCA

SS GOLDRUSH
BIG HILLS LADY GOLD 37S PG684984
CONRAY FOXY 3585N

TNT FORTUNE BUILDER H122
MISS ARNOLD K2231
PVF-CW RAPID FIRE 0195K
NATASHA
MV RED LIGHT 406
STF E'QUARTA'
ABC MR MAINSTREAM 520F
TFED RED ROBIN 2785H

BW: 87.
EPDs Spring 2012: 4.3 4.2 44.3 77.0 6.1 24.8 2.7
Open.



\$2,000.00

114. BIG HILLS MISS CAESAR 558X

POLLED PUREBRED FEMALE
PG758941

BHDM 558X

9 September 2010

BOZ REDCOAT
ANKONIAN RED CAESAR PT670682
GFI CANDACE G51

LCHMN BODYBUILDER 7303F
RKTS BOJANGLE 3P PG630835
DXHW MS RED GOLD 46H

HERCULES 538P
BOZ RED LADY
GW SOLID FLECK
GFI DELTA DAWN D123
3C WALLY C240 BLK
LSF MOMENTO D8
SSR RED GOLD D42
DXHW MS RED BALDY

BW: 91.
EPDs Spring 2012: 4.3 3.3 39.0 70.4 6.1 28.5 9.0
Open.

115. BIG HILLS MISS CRUSH 586X

POLLED PUREBRED FEMALE
PG759028

BHDM 586X

19 September 2010

TNT TOP CUT P274
BIG HILLS CRUSHER 149T PG684893
MSC REBECCA

TNT FORTUNE BUILDER H122
MISS ARNOLD K2231
PVF-CW RAPID FIRE 0195K
NATASHA
WHEATLAND BULL 131L
WHEATLAND LADY 902J
DOUBLE BAR D BLK CRK 86M
DCR MS AFTER SHOCK L82

WHEATLAND BULL 462P
BIG HILLS LADY WHEAT 160T PG691279
WLB 86M RUBY 354R

BW: 90.
EPDs Spring 2012: 5.0 3.4 41.1 74.3 6.7 25.1 4.5
Open.



\$2,400.00

116. BIG HILLS MISS CRUSH 587X

POLLED PUREBRED FEMALE
PG758980

BHDM 587X

20 September 2010

TNT TOP CUT P274
BIG HILLS CRUSHER 149T PG684893
MSC REBECCA

TNT FORTUNE BUILDER H122
MISS ARNOLD K2231
PVF-CW RAPID FIRE 0195K
NATASHA
IPU RED WARRIOR 101L
DOUBLE BAR D STREET 714G
AWL EMPEROR 9H
AWL MS ROJO 6D

DOUBLE BAR D WARRIOR 143N
AWL RED LADY 63R PG668027
AWL EMPRESS 20N

BW: 83.
EPDs Spring 2012: 4.3 3.8 37.3 68.7 6.1 23.1 4.4
Open.



\$2,000.00

117. BIG HILLS MS REDBULL 630Y

POLLED PUREBRED FEMALE
PG759281

BHDM 630Y

1 January 2011

THSF FREEDOM 300N
KNK/CRSR RED BULL 53T PG713478
JDJ MISS MACHO 53P

BH TRACKER 998J
SAFN MISS ZING 02H
REYNOLDSON MR MACHO L133
JDJ 9AS PLAYGIRL 040K
TNT DYNAMITE BLACK L137
RKTS BOJANGLE 3P
ELLINGSON THE ROCK J928
TFED JULIE 527K

BIG HILLS BLACK MAGIC 30S
BIG HILLS LADY MAGIC 278U BPG717630
CONRAY DEWDROP 1327N

BW: 81. 205 day: 621. 365 day: 965.
EPDs Spring 2012: 4.0 3.1 36.8 66.9 5.9 22.7 4.3
Open.



\$2,500.00

118. BIG HILLS MS EVEREST 631Y

POLLED PUREBRED FEMALE
PG759242

BHDM 631Y

1 January 2011

DOUBLE BAR D EVEREST 4R
DOUBLE BAR D EVEREST 76T PG83722
DOUBLE BAR D ELMA 4M

EMIL
DOUBLE BAR D LYNN 89M
ATFR KAPTAIN 67D
ANCHOR "T" ELMA 26K
IPU RED WARRIOR 101L
DOUBLE BAR D STREET 714G
ELLINGSON THE ROCK J928
CONRAY SWEET PEA 16J

DOUBLE BAR D WARRIOR 143N
BIGHILLS LADY WARRIOR 46S PG684961
CONRAY NAPONEE 616N

BW: 100. 205 day: 690. 365 day: 1098.
EPDs Spring 2012: 7.8 1.4 23.2 43.7 4.3 21.4 9.8
Open.



\$2,000.00



\$2,900.00

119. BIG HILLS MS REDBULL 638Y

POLLED PUREBRED FEMALE
PG759249

BHDM 638Y

6 January 2011

THSF FREEDOM 300N
KNK/CRSR RED BULL 53T PG713478
JDJ MISS MACHO 53P

BLC 174R
BIG HILLS RED LADY 121T PG691289
MJH GOOSEBERRY

BW: 88. 205 day: 612. 365 day: 960.
EPDs Spring 2012: 3.5 3.3 35.7 64.2 6.7 21.0 3.1
Open.

BH TRACKER 998J
SAFN MISS ZING 02H
REYNOLDS MR MACHO L133
JDJ 9AS PLAYGIRL 040K
MEYERS RED TOP
HF/GFI RUBY RED 33E
BBS MR PEPPER J59
CRANBERRY



\$3,200.00

120. BIG HILLS MISS DREAM 639Y

POLLED PUREBRED FEMALE
PG759291

BHDM 639Y

6 January 2011

CNS DREAM ON L186
SKORS DREAM ON 124U BPG702042
SKORS BLACK BEAUTY 38N

BIG HILLS EARTHQUAKE 101T
BIG HILLS MS QUAKE 326W PG718168
BIG HILLS RED LADY 102T

BW: 81. 205 day: 620. 365 day: 960.
EPDs Spring 2012: 12.0 -1.7 28.8 51.5 5.2 20.5 6.1
Open.

NICHOLS BLK DESTINY G151
CNS SHEEZA DREAM K107W
CZAR MR BLACK KNIGHT 74J
MISS NOREMAC LCL 53K
HOOK'S RED QUORUM 55H
BIG SKY RITA 30R
BLC 174R
AWL MS 44P



\$2,150.00

121. BIG HILLS MS JULIUS 643Y

POLLED PUREBRED FEMALE
PG759280

BHDM 643Y

6 January 2011

ANKONIAN RED CAESAR
SKORS BLACK JULIUS 36W BPG719086
SKORS MS JOKER 7P

DOUBLE BAR D JAGUAR 128S
BIGHILLS LADY JAGUAR 277U PG695947
MSC REBECCA

BW: 94. 205 day: 647. 365 day: 1037.
EPDs Spring 2012: 7.5 1.9 35.0 65.4 5.7 27.0 9.5
Open.

BOZ REDCOAT
GFI CANDACE G51
PVF-BF BF26 BLACK JOKER
SKORS MISS 40M
DRIFTING "M" LP 59L
IPU RED MS NOPHALT 121M
PVF-CW RAPID FIRE 0195K
NATASHA



\$2,500.00

122. BIG HILLS MS REDBULL 644Y

POLLED PUREBRED FEMALE
PG759145

BHDM 644Y

7 January 2011

THSF FREEDOM 300N
KNK/CRSR RED BULL 53T PG713478
JDJ MISS MACHO 53P

ABC MR MAINSTREAM 520F
CONRAY BRASSY 816N PG616870
TFED RED PEPPER 516K

BW: 96. 205 day: 753. 365 day: 1124.
EPDs Spring 2012: -0.3 5.3 40.8 67.0 6.8 25.7 5.3
Open.

BH TRACKER 998J
SAFN MISS ZING 02H
REYNOLDS MR MACHO L133
JDJ 9AS PLAYGIRL 040K
BAR NONE MAINSTREAM
DCW MISS POLL SIGNAL 18B
LCHMN BODYBUILDER 7303F
CONRAY VICTORIA 16H

123. BIG HILLS MISS DREAM 648Y

POLLED PUREBRED FEMALE
PG759273

BHDM 648Y

8 January 2011

CNS DREAM ON L186
SKORS DREAM ON 124U P6702042
SKORS BLACK BEAUTY 38N

BLCC 174R
BIG HILLS RED LADY 227U P6695949
CONRAY OBSESSION 1118R

NICHOLS BLK DESTINY G151
CNS SHEEZA DREAM K107W
CZAR MR BLACK KNIGHT 74J
MISS NOREMAC LCL 53K
MEYERS RED TOP
HF/GFI RUBY RED 33E
ELLINGSON THE ROCK J928
CONRAY OBSESSION 518H

BW: 87. 205 day: 598. 365 day: 920.
EPDs Spring 2012: 9.5 -0.1 30.5 50.4 4.2 21.2 6.0
Open.



\$2,400.00

124. BIG HILLS MS EVEREST 669Y

POLLED PUREBRED FEMALE
PG759244

BHDM 669Y

15 January 2011

DOUBLE BAR D EVEREST 4R
DOUBLE BAR D EVEREST 76T P683722
DOUBLE BAR D ELMA 4M

DOUBLE BAR D WARRIOR 143N
PBIGHILLS LADY WARRIOR 59S P684966
CONRAY ASTER 516N

EMIL
DOUBLE BAR D LYNN 89M
ATFR KAPTAIN 67D
ANCHOR "T" ELMA 26K
IPU RED WARRIOR 101L
DOUBLE BAR D STREET 714G
ABC MR MAINSTREAM 520F
CONRAY VICTORIA 16H

BW: 91. 205 day: 656. 365 day: 1000.
EPDs Spring 2012: 5.0 3.0 29.8 50.3 3.9 25.1 10.2
Open.



\$2,050.00

125. BIG HILLS MISS JAG 673Y

POLLED PUREBRED FEMALE
PG759272

BHDM 673Y

16 January 2011

DRIFTING "M" LP 59L
DOUBLE BAR D JAGUAR 128S P6666059
IPU RED MS NOPHALT 121M

DOUBLE BAR D MATRIX 121S
BIG HILLS LADY MATRIX 198U P695989
BIG HILLS LADY MARK 2S

PVF-BF BF26 BLACK JOKER
DRIFTING "M" GRETA 4G
PPSR NOPHALT 20H
TNT MISS JERILYN J322
DOUBLE BAR MAKE M PLLED
DOUBLE BAR D SUSAN 620N
AWL MARK 34P
AWL MS 44P

BW: 91. 205 day: 690. 365 day: 1062.
EPDs Spring 2012: 10.5 0.3 28.0 53.4 5.0 21.1 7.1
Open.
Polled Full Fleckvieh.



\$1,750.00

126. BIG HILLS MISS JAG 687Y

POLLED PUREBRED FEMALE
PG759232

BHDM 687Y

23 January 2011

DRIFTING "M" LP 59L
DOUBLE BAR D JAGUAR 128S P6666059
IPU RED MS NOPHALT 121M

ELLINGSON THE ROCK J928
CONRAY AMELIA 152SR P642502
CONRAY AMELIA 1025F

PVF-BF BF26 BLACK JOKER
DRIFTING "M" GRETA 4G
PPSR NOPHALT 20H
TNT MISS JERILYN J322
MV RED LIGHT 406
ELLINGSON MSAMERICA F708
LEACHMAN PERFECTION 7520
CONRAY KALIDJA 25D

BW: 92. 205 day: 670. 365 day: 1010.
EPDs Spring 2012: 8.3 0.6 29.3 54.1 3.1 21.3 6.6
Open.



\$2,100.00



\$2,600.00

127. BIG HILLS MISS FORCE 701Y

POLLED PUREBRED FEMALE
PG759298

BHDM 701Y

31 January 2011

NICHOLS BLK DESTINY G151
HOOKS SHEAR FORCE 38K BPG684162
C&D TRACY

GWS EBONYS TRADEMARK 6N
BOYNECREST MISS 69T 64W BPG720934
BOYNECREST MISS 132J 69T

NICHOLS BLK DESTINY D12
NICHOLS DEBRA D81
CIRCLE S LEACHMAN 600U
BETSY
WLE POWER STROKE
NJC EBONY ANTOINETTE
ACS FALCON 12K
BOYNECREST MISS 31E 132J

BW: 80. 205 day: 615. 365 day: 940.
EPDs Spring 2012: 12.8 -2.4 27.2 45.4 6.1 20.4 6.8
Open.



\$2,050.00

128. BIG HILLS MISS DREAM 720Y

POLLED PUREBRED FEMALE
PG759284

BHDM 720Y

15 February 2011

CNS DREAM ON L186
SKORS DREAM ON 124U BPG702042
SKORS BLACK BEAUTY 38N

DOUBLE BAR D JAGUAR 128S
BIGHILLS LADY JAGUAR 295U PG717737
AWL 32R

NICHOLS BLK DESTINY G151
CNS SHEEZA DREAM K107W
CZAR MR BLACK KNIGHT 74J
MISS NOREMAC LCL 53K
DRIFTING "M" LP 59L
IPU RED MS NOPHALT 121M
AWL EXTRAORDINAIRE 1N
AWL MS ROJO 6D

BW: 86. 205 day: 568. 365 day: 918.
EPDs Spring 2012: 9.0 0.8 33.6 58.1 3.7 24.3 7.4
Open.



\$4,600.00

129. BIG HILLS MISS DREAM 635Y

BLACK POLLED PUREBRED FEMALE
BPG759294

BHDM 635Y

4 January 2011

CNS DREAM ON L186
SKORS DREAM ON 124U BPG702042
SKORS BLACK BEAUTY 38N

DOUBLE BAR D JAGUAR 128S
BIG HILLS MS JAGUAR 342W PG718173
BIG HILLS LADY WARR 118T

NICHOLS BLK DESTINY G151
CNS SHEEZA DREAM K107W
CZAR MR BLACK KNIGHT 74J
MISS NOREMAC LCL 53K
DRIFTING "M" LP 59L
IPU RED MS NOPHALT 121M
DOUBLE BAR D WARRIOR 143N
AWL DOOLITTLE 2ND 8F

BW: 84. 205 day: 620. 365 day: 961. EPDs Spring 2012: 9.5 0.7 32.9 56.5 4.4 22.5 6.0
Open.



\$4,700.00

ANKONIAN RED CAESAR
SKORS BLACK JULIUS 36W BPG719086
 SKORS MS JOKER 7P

DOUBLE BAR D JAGUAR 128S
BIGHILLS LADY JAGUAR 276U PG696002
 BIG HILLS LADY STOUT 60S

BW: 104. 205 day: 647. 365 day: 1017. EPDs Spring 2012: 6.0 2.5 36.0 64.3 4.7 29.0 11.0
 Open.

BOZ REDCOAT
 GFI CANDACE G51
 PVF-BF BF26 BLACK JOKER
 SKORS MISS 40M
 DRIFTING "M" LP 59L
 IPU RED MS NOPHALT 121M
 AWL STOUT EISENHERZ 37M
 AWL TOPGIRL 15H

130. BIG HILLS MS JULIUS 674Y

BLACK POLLED PUREBRED FEMALE
 BPG759279

BHDM 674Y

16 January 2011

131. BIG HILLS MISS DREAM 557X

BLACK POLLED PUREBRED FEMALE

BPG759030

BHDM 557X

9 September 2010

CNS DREAM ON L186
SKORS DREAM ON 124U BPG702042
 SKORS BLACK BEAUTY 38N

CDP STING 25R
BIG HILLS LADY STING 164T PG691270
 CONRAY NAPONEE 616N

BW: 82.
 EPDs Spring 2012: 9.5 0.3 35.9 56.8 5.2 22.2 4.2
 Open.

NICHOLS BLK DESTINY G151
 CNS SHEEZA DREAM K107W
 CZAR MR BLACK KNIGHT 74J
 MISS NOREMAC LCL 53K
 RC STINGER 072K
 X-T DESTINYS DOLL 16L
 ELLINGSON THE ROCK J928
 CONRAY SWEET PEA 16J



\$2,000.00

132. BIG HILLS MISS DREAM 658Y

BLACK POLLED PUREBRED FEMALE

BPG759283

BHDM 658Y

10 January 2011

CNS DREAM ON L186
SKORS DREAM ON 124U BPG702042
 SKORS BLACK BEAUTY 38N

DOUBLE BAR D JAGUAR 128S
BIGHILLS LADY JAGUAR 286U PG717628
 CONRAY ASTER 516N

BW: 81. 205 day: 650. 365 day: 999.
 EPDs Spring 2012: 8.8 0.7 35.5 56.8 4.3 23.5 5.7
 Open.

NICHOLS BLK DESTINY G151
 CNS SHEEZA DREAM K107W
 CZAR MR BLACK KNIGHT 74J
 MISS NOREMAC LCL 53K
 DRIFTING "M" LP 59L
 IPU RED MS NOPHALT 121M
 ABC MR MAINSTREAM 520F
 CONRAY VICTORIA 16H



\$2,800.00



\$2,300.00

133. BIG HILLS MISS JAG 675Y

BLACK POLLED PUREBRED FEMALE

BPG759251

BHDM 675Y

17 January 2011

DRIFTING "M" LP 59L
DOUBLE BAR D JAGUAR 128S PTG666059
 IPU RED MS NOPHALT 121M

CDP STING 25R
BIG HILLS LADY STING 145T BPG691284
 AWL CRAIG 19N

PVF-BF BF26 BLACK JOKER
 DRIFTING "M" GRETA 4G
 PPSR NOPHALT 20H
 TNT MISS JERILYN J322
 RC STINGER 072K
 X-T DESTINY'S DOLL 16L
 GIBBY'S EMPERORJULIUS 103
 AWL BLONDIE 4L

BW: 99. 205 day: 690. 365 day: 1055.
 EPDs Spring 2012: 7.8 2.0 35.8 64.3 5.6 23.8 5.9
 Open.



\$2,400.00

134. BIG HILLS MS JULIUS 725Y

BLACK POLLED PUREBRED FEMALE

BPG759253

BHDM 725Y

19 February 2011

ANKONIAN RED CAESAR
SKORS BLACK JULIUS 36W BPG719086
 SKORS MS JOKER 7P

CDP STING 25R
BIG HILLS LADY STING 173T BPG691302
 AWL RED LADY 26R

BOZ REDCOAT
 GFI CANDACE G51
 PVF-BF BF26 BLACK JOKER
 SKORS MISS 40M
 RC STINGER 072K
 X-T DESTINY'S DOLL 16L
 SSS-SCF CHUCKWAGON 008J
 CONRAY BRASSY 816N

BW: 105. 205 day: 781. 365 day: 1110.
 EPDs Spring 2012: 5.8 2.8 42.2 69.4 5.8 29.4 8.3
 Open.

Service Sire

SKORS DREAM ON 124U

BLACK POLLED PUREBRED MALE

BPG702042

ETZ 124U

15 January 2008

NICHOLS BLK DESTINY G151
CNS DREAM ON L186 BPT6632589
 CNS SHEEZA DREAM K107W

CZAR MR BLACK KNIGHT 74J
SKORS BLACK BEAUTY 38N BPG604828
 MISS NOREMAC LCL 53K

NICHOLS BLK DESTINY D12
 NICHOLS DEBRA D81
 SRS FRANCHISE F601
 NICHOLS JOLIETTE 107W
 PPSR INFINITI
 CHARLIE'S ANGEL 621E
 PPSR BLACK MAGIC 11G
 KSR RED FLECK 717F

BW: 87. 205 day: 837. 365 day: 1503.
 EPDs Spring 2012: 12.5 -1.6 33.5 53.9 4.4 22.6 5.8



Service Sires

BBBG BRADOCK 2T

FULLBLOOD MALE
 T675216-KN

BBBG 2T

18 February 2007

ROGANT
PRL HOUSTON 005H 501018
 MS PRL NITE-ANCHOR 109B

BEL WESTERN UNION 5Z
IPU 4C FRANCESCA 98N T624691
 DORA LEE FRANCESCA

BW: 112.
 EPDs Spring 2012: -0.5 7.3 57.1 91.5 6.9 43.2 14.6

ROGER
 LORIS
 MR PRL ANCHOR 088Y
 MISS KNIGHT 156S
 RICKARDSTOWN JUMBO
 BEL HELGA 9TH
 ANTONIUS
 DORA LEE FRALINE

BHR BARON SA 2842P

FULLBLOOD MALE
 T645655

BHR 2842P

14 October 2004

HAGEN
KYKSO HADAU 348972
 KYKSO DAUNE 78

JAHDAL IBBIE
TRANS-MAGALIES MABIE 530843
 TRANS-MAGALIES MAJA

BW: 102.
 EPDs Spring 2012: 0.0 5.9 33.4 58.4 2.2 28.6 11.9

HERO
 LYRA
 KYKSO KAIMAT 73
 DAPHNE
 JAHDAL INGO 86
 JAHDAL ELBIE 86
 SWAARBOU GERT
 KWANTUM MEJ MAAJ J86

Service Sires

BIG HILLS RAZOR 499X

FULLBLOOD MALE
739123 BHDM 499X 23 January 2010

DOUBLE BAR D BUSTER 801L
SOUTH SEVEN RAZZMATAZZ 7R 639435
SOUTH SEVEN FLECK 16F

BEL MOSCOW 300M
DELTA-RHO SHEDAISY FF39S 655801
TRYON JEZEBEL FF12L

ELDANDI 907H
MRLN BARBL
ROGANT
M-RIDGE BRIANA 064B
LAKI
BEL BETTI 300J
MFL MEISTER 36Y
JACK PINE BARBI 47F

BW: 110.
EPDs Spring 2012: 1.0 6.2 41.0 65.5 5.2 32.2 11.8

BIG HILLS IRONMAN 158T

FULLBLOOD MALE
684890 BHDM 158T 14 February 2007

ANDERLAND MATIAS-POENA
BAR 5 P SA EXPERT 826M PT598604
TOVERBERG ERIKA

KYKSO HAPED
SAVANNAH T623039
DAN-JACO ERNA 5DE

ELDORADO
ANDERLAND FEMMI
KYKSO KALGER
TOVERBERG ELSA
KYKSO HADAU
KYKSO PEDODI
BENZ
DAN-JACO ERNA 76

BW: 105.
EPDs Spring 2012: 4.5 4.7 37.1 55.7 3.9 34.2 15.6

AWL STOUT EISENHERZ 37M

POLLED FULLBLOOD MALE
PT624920 AWL 37M 13 December 2002

ECKHOLM 41053
EISENHERZ P397318
037131389

BAR NONE MAXIMIZER
DOUBLE BAR D SANDY 26L 560977
RICHMOND MISS ZUMUTO 40F

ECHSTEIN 795
030425486
HOLBACH I
031319386
BAR NONE MAINSTREAM
COUNTRY CHARM
ZAMUTO
BAR NONE LOIS

BW: 95. 205 day: 903. 365 day: 1332.
EPDs Spring 2012: 6.5 2.5 24.2 42.1 5.9 28.4 16.3

SUNNY VALLEY HORIZON 67R

POLLED FULLBLOOD MALE
P639604 WLLS 67R 17 February 2005

GRINALTA'S GRIDIRON 403J
DFM MARCUS 14M \$580437
DFM KATHLEEN 41K

BEL STEWARD 2ND
MTV BECKY 502486
MTV TONI 1F

PRL PORTERHOUSE REGENT
GRINALTA'S POLLED FLECK
ANCHOR "T" METRO 4E
MISS DFM KATHY ANN 97A
STEWARD
SJFB LIRA
SRN BOLD ARNOLD 1X
BEL NORA 308C

BW: 115. 205 day: 851. 365 day: 1440.
EPDs Spring 2012: 7.5 2.8 38.7 58.0 2.4 30.0 10.6

BRANDBERG

POLLED FULLBLOOD MALE
P622079-KN FGN 403L 3 September 2001

BALIST
BALDRIN 396504
BLONE

ESSIG
SONNE DD_918594862
374

BALDO
TIMES
ZEUS
BLONDE
EMINENZ
476
EMPAU
299

EPDs Spring 2012: 3.5 1.6 20.4 37.2 2.9 17.6 7.4

BDS MR LINER 70X

POLLED PUREBRED MALE
PG740537 BDS 70X 23 February 2010

MEYER'S RED LINE
MUIRHEAD ONLINE 83S PG657667
DRIFTING "M" LENORE 69L

3C FULL FIGURES C288 BLK
MILESTONE FF RENEE 91S PG659967
RKTS RENE 14P

MEYERS BLACKTOP 206Y
MEYERS DREAM
LHVS MR LOCKHART 41J
DRIFTING "M" JAUNTY 35J
EMMONS BLACK HERCULES
3C DANMARKA 0922 BLKZ
LRS RED REALITY 33J
RKTS BOJANGLE 36L

BW: 94. WW: 910. YW: 1300.
EPDs Spring 2012: 6.5 2.9 39.7 65.7 2.7 24.3 4.4



Landmark Feeds

We've been in the feed business for over 55 years and are pleased to be the feed supplier for Marcischuk Farms.

Good luck at the sale!

For all your beef nutrition needs call
Chris Elias at 371-6301 or
Derek Reimer at 371-9093



\$1,900.00

ANDERLAND MATIAS-POENA
BAR 5 P SA EXPERT 826M PT598604
 TOVERBERG ERIKA

KYKSO HAPED
SAVANNAH T623039
 DAN-JACO ERNA 5DE

BW: 92. EPDs Spring 2012: 4.5 4.4 36.1 54.4 4.9 33.7 15.6
 Bred AI Dec 2/11 to BHR Baron SA 2842P T645655 and exposed Dec 22/11 to Jan 25/12 to Sunny Valley Horizon 67R P639604.

ELDORADO
 ANDERLAND FEMMI
 KYKSO KALGER
 TOVERBERG ELSA
 KYKSO HADAU
 KYKSO PEDODI
 BENZ
 DAN-JACO ERNA 76

135. BIG HILLS LADY EXPERT 38S

POLLED FULLBLOOD FEMALE
 P684955

BHDM 38S

14 February 2006

Polled, Full South African, Full Fleckvieh. Full sister to Big Hills Ironman BHDM 158T. Her calf, BHDM 572X, also sells today.



GRINALTA'S GRIDIRON 403J
DFM MARCUS 14M S580437
 DFM KATHLEEN 41K

BAR NONE MAINSTREAM
CHERRY CREEK TYRA 6M T579935
 MS DD&E FEMME FATALE 53F

BW: 98. 205 day: 737. EPDs Spring 2012: 6.5 1.7 23.5 39.7 4.4 31.9 20.1
 Exposed Nov 30/11 to Dec 20/11 to AWL Stout Eisenherz 37M PT624920 and exposed Jan 10 to Jan 25/12 to Big Hills Ironman 158T.

PRL PORTERHOUSE REGENT
 GRINALTA'S POLLED FLECK
 ANCHOR "T" METRO 4E
 MISS DFM KATHY ANN 97A
 NDM MUSKEL 14W
 BAR NONE FLORENCE
 MFL UNIVERSE 28U
 MS DD&E ANCHORED DOWN 3C

136. CHERRY CREEK TERI 7S

POLLED FULLBLOOD FEMALE
 P656017

ANDR 7S

2 January 2006

Polled Full Fleckvieh. Great Cherry Creek dam. Heifer calf, BHDM 618X, also sells today.

137. BIG HILLS LADY MARK 48S

POLLED FULLBLOOD FEMALE
P684962

BHDM 48S

26 February 2006

CROSSROAD BENCHMARK 150M
AWL MARK 34P 656511
MRL MISS 351M

AWL RUFUS EISENHERZ 25M
AWL MS 36P P671882
AWL EMPRESS 1M

BHR DOORN G629E
IPU MS. FRANCHESCA 7J
SMITHBILT FREIGHTLINER91J
MISS MRL 649J
EISENHERZ
BAR NONE BONNIE LASS
EMPEROR
AWL WESTERN LASS 15K

BW: 100.
EPDs Spring 2012: 6.0 3.4 30.2 48.0 6.7 25.8 10.7
Exposed Dec 1/11 to Jan 25/12 to Big Hills Ironman 158T 684890.
Polled Fullblood. Her dam, AWL 36P, also sells today.



\$1,400.00

138. BIGHILLS MS EVEREST 368W

SCURRED FULLBLOOD FEMALE
P718166

BHDM 368W

27 January 2009

DOUBLE BAR D EVEREST 4R
DOUBLE BAR D EVEREST 76T P683722
DOUBLE BAR D ELMA 4M

GIDSCO APPOLLO 3F
BIG SKY SAMMY 36S 663470
RJRS MISS LAREDO 450P

EMIL
DOUBLE BAR D LYNN 89M
ATFR KAPTAIN 67D
ANCHOR "T" ELMA 26K
ANTONIUS
MFL BRENDA 65B
CEN LAREDO 519L
BAR NONE BERNADETTE 2

BW: 86
EPDs Spring 2012: 6.0 2.6 30.2 52.8 6.2 29.6 14.5
Exposed Dec 1/11 to Jan 25/12 to Big Hills Ironman 158T 684890.
Scurred Full Fleckvieh.



\$1,550.00

139. BIG HILLS LADY EXPERT197U

SCURRED FULLBLOOD FEMALE
S695889

BHDM 197U

11 February 2008

ANDERLAND MATIAS-POENA
BAR 5 P SA EXPERT 826M PT598604
TOVERBERG ERIKA

SRN BOLD ARNOLD 1X
DCSF BOLD N BRASSIE 3N 601410
MRLN JONA

ELDORADO
ANDERLAND FEMMI
KYKSO KALGER
TOVERBERG ELSA
KNIGHT CLEO 267U
SRN MS BOLD 80U
POND
MRLN JOHANNA

BW: 101.
EPDs Spring 2012: -1.0 7.4 43.0 65.2 4.7 33.5 12.0
Bred AI Dec 16/11 to AWL Stout Eisenherz 37M PT624920 and exposed Jan 10 to Jan 25/12 to Sunny Valley Horizon 67R P639604.
Scurred, Full Fleckvieh. Big frame and goggled eyes.



\$1,250.00

140. BIG HILLS LADY STOUT 253U

POLLED FULLBLOOD FEMALE
P695932

BHDM 253U

6 February 2008

EISENHERZ
AWL STOUT EISENHERZ 37M PT624920
DOUBLE BAR D SANDY 26L

CROSSROAD MAVERICK 112L
AWL ACE 40P 656512
MRL MISS 363M

ECKHOLM 41053
037131389
BAR NONE MAXIMIZER
RICHMOND MISS ZUMUTO 40F
ABR SIR ARNOLDS IMAGE
IPU MS. FRANCHESCA 7J
MRL RINGO 16 H
MISS MRL 291F

BW: 97.
EPDs Spring 2012: 2.0 4.4 31.6 47.9 6.2 29.2 13.4
Exposed Dec 1/11 to Jan 25/12 to Big Hills Ironman 158T 684890.
Polled Fullblood. Daughter of AWL Stout 37M.

\$1,350.00

141. BIGHILLS LADY MATRIX 270U

SCURRED FULLBLOOD FEMALE
S695994

BHDM 270U

29 January 2008

DOUBLE BARD MAKE M PLLED
DOUBLE BAR D MATRIX 121S P666179
DOUBLE BAR D SUSAN 620N

AWL STOUT EISENHERZ 37M
BIG HILLS LADY STOUT 22S P684948
AWL STARLET 15E

GRINALTA'S GRIDIRON 403J
GRINALTA'S CLASS ACT 11K
ELDANDI 907H
BHR LADY SUZETTE 207K
EISENHERZ
DOUBLE BAR D SANDY 26L
HARKAWAY MR STAR 38Z
CJB MISS DOLLY 12Z

BW: 79.
EPDs Spring 2012: 7.5 2.3 31.2 51.9 5.9 25.6 10.0
Bred AI Nov 23/11 to Gibby's Real Deal 25T P673069 and exposed Dec 13/11 to Jan 25/12 to Big Hills Ironman 158T 684890.
Scurred Fullblood. Double Bar D Matrix daughter.

\$1,350.00

142. BIG HILLS LALDY STOUT216U

POLLED FULLBLOOD FEMALE
P695872

BHDM 216U

18 January 2008

EISENHERZ
AWL STOUT EISENHERZ 37M PT624920
DOUBLE BAR D SANDY 26L

RICHWOOD BRUNO 809G
AWL BRUNETTE 22K P545873
MISS ACCELERATOR 354B

ECKHOLM 41053
037131389
BAR NONE MAXIMIZER
RICHMOND MISS ZUMUTO 40F
RICHWOOD TOPHAND 809C
MARYWOOD BURNADETTE
BAR 5 ACCELERATION 372Y
G7 MS GREER 10Z

BW: 104.

EPDs Spring 2012: 1.5 5.7 41.5 71.4 6.9 36.4 15.6

Exposed Dec 1/11 to Jan 25/12 to Big Hills Ironman 158T 684890.

Polled Fullblood. Brown with goggle eyes. Has raised some of our favorite bull calves to date.

\$1,250.00

143. BIG HILLS LADY STAR 41S

POLLED FULLBLOOD FEMALE
P684958

BHDM 41S

19 February 2006

FARNHAM 5 STAR
HARKAWAY MR STAR 38Z P216431
HARKAWAY POLAS LEGEND

SRN BOLD ARNOLD 1X
DCSF BOLD N BRASSIE 3N 601410
MRLN JONA

BAR 5 GENERAL 406L
MANTAS ADVANTAGE 274M
CONVERT 292L
FLEUR
KNIGHT CLEO 267U
SRN MS BOLD 80U
POND
MRLN JOHANNA

BW: 98.

EPDs Spring 2012: 1.5 6.0 42.2 67.3 6.4 28.6 7.5

Exposed Nov 30/11 to Dec 20/11 to AWL Stout Eisenherz 37M PT624920 and exposed Jan 10 to Jan 25/12 to Sunny Valley Horizon 67R P639604.

Polled Fullblood. Mothering ability and milk to spare!

\$1,600.00

144. BIGHILLS LADY PHARAO 199U

FULLBLOOD FEMALE
695884

BHDM 199U

12 January 2008

ABR SIR ARNOLDS IMAGE
SANMAR POLLED PHARAO 12P P618914
SANMAR POL TEARDROP 12M

MRLALERO 34K
SBSF MARIA 46M P575326
LFE MISS LEWIS 45A

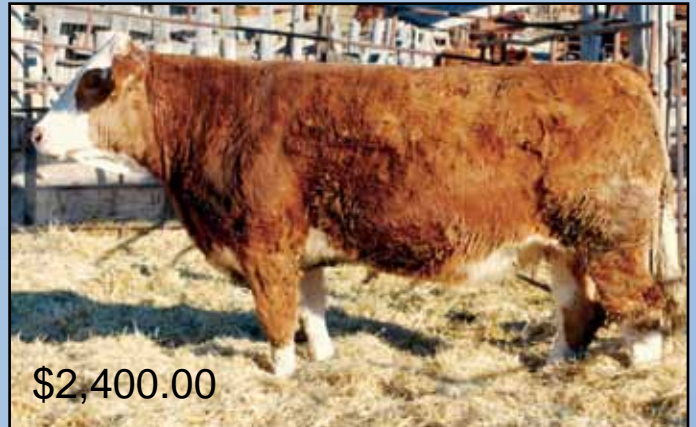
SIEGFRIED
ABR SHINAGH VIOLET
DAY HASALZ 732G
DAYTON'S POLLED TEARDROP
BGS HOLLYWOOD 41H
JAV MS DAYTIME 17F
SWITZ POL BUDS CHIEF
LFE MISS LEWIS 61Y

BW: 80.

EPDs Spring 2012: 10.0 0.1 24.3 45.9 6.2 23.2 11.0

Bred AI Nov 23/11 to Gibby's Real Deal 25T P673069 and exposed Dec 13/11 to Jan 25/12 to Big Hills Ironman 158T 684890.

Horned Fullblood. Dam to last year's high selling Big Hills bull.



\$2,400.00

145. BIG HILLS LADY HERO 109T

POLLED FULLBLOOD FEMALE
P691294

BHDM 109T

8 January 2007

BAR 5 SA HERO 823M
BIG HILLS SUPER HERO 1R T634337
BHR HELGA M328E

AWL STOUT EISENHERZ 37M
AWL TOPGIRL 48R P649116
AWL TOPGIRL 16H

KYKSO HAPED
RU-DEV PEPPY
ERICO PRIMAL
CONGOSIM SUSI
EISENHERZ
DOUBLE BAR D SANDY 26L
AWL TOPHAND 1F
EDN RAYLA 111B

BW: 75.

EPDs Spring 2012: 5.5 3.8 33.7 54.7 4.9 33.0 16.1

Exposed Dec 1/11 to Jan 25/12 to Big Hills Ironman 158T 684890.

Polled Fullblood. Sired by Big Hills Super Hero BHDM 1R. Heifer calf, BHDM 591X, also sells today.



\$2,150.00

146. BIG HILLS LADY STAR 35S

POLLED FULLBLOOD FEMALE
P684953

BHDM 35S

7 February 2006

FARNHAM 5 STAR
HARKAWAY MR STAR 38Z P216431
HARKAWAY POLAS LEGEND

ANCHOR "T" EXPRESS 33H
RKTF EXPRESSION 24N 612876
KWA MS CONSTRUCTOR 43C

BAR 5 GENERAL 406L
MANTAS ADVANTAGE 274M
CONVERT 292L
FLEUR
ANCHOR "T" METRO 4E
MFL BRUTLI 68B
RB CONSTRUCTOR 7L
PHEASANTDALE LADY 27

BW: 85.

EPDs Spring 2012: 1.0 6.1 37.6 57.0 6.7 32.8 14.0

Bred AI Dec 3/11 to AWL Stout Eisenherz 37M PT624920 and exposed Dec 23/11 to Jan 25/12 to Sunny Valley Horizon 67R P639604.

Polled Fullblood. Her AI Sire is Harkaway 38Z with proven genetics to back her great size.



\$2,500.00

147. BIG HILLS LADY MARK 2S

POLLED FULLBLOOD FEMALE
P684939

BHDM 2S

7 January 2006

CROSSROAD BENCHMARK 150M
AWL MARK 34P 656511
MRL MISS 351M

AWL EMPEROR 9H
AWL MS 44P P671889
AWL MS BRUNETTE 8K

BHR DOORN G629E
IPU MS. FRANCHESCA 7J
SMITHBILT FREIGHTLINER91J
MISS MRL 649J
EMPEROR
DAYTON'S POL STAR 15B
RICHWOOD BRUNO 809G
BAR 5 MS THUNDER 636H

BW: 87.
EPDs Spring 2012: 6.5 2.4 27.4 43.4 7.9 21.2 7.5
Bred AI Dec 2/11 to Big Hills Razor 499X 739123 and exposed Dec 22/11 to Jan 25/12 to Sunny Valley Horizon 67R P639604.

Polled Fullblood. Solid brown with goggles. A great mother.

\$1,350.00

148. AWL 74R

POLLED FULLBLOOD FEMALE
P649178

AWL 74R

18 April 2005

GRINALTA'S EXTRAORDINAIRE
AWL EXTRAORDINAIRE 1N ST632393
RICH MC MS EISENHERZ 4L

BAR 5 ACCELERATOR 372Y
MISS ACCELERATOR 346B PT263929
G7 MS GREER 10Z

MUTIG
EDC POLL MAGNUM 1B
EISENHERZ
RICHMOND MISS MOSES 77G
BAR 5 GENERAL 406L
CCFS RITZ 11R
AWL SUPERMAC 8U
G7 SIGNETTE 2T

BW: 74. 205 day: 644.
EPDs Spring 2012: 7.5 1.7 30.0 56.9 3.9 27.6 12.6
Bred AI Dec 2/11 to Brandberg P622079-KN and exposed Dec 22/11 to Jan 25/12 to Sunny Valley Horizon 67R P639604.

Scurred Fullblood. An experienced dam with great mothering ability. Her daughter, BHDM 595X, also on offer.

\$1,350.00

149. AWL STYLE 75R

POLLED FULLBLOOD FEMALE
P649179

AWL 75R

12 May 2005

GRINALTA'S EXTRAORDINAIRE
AWL EXTRAORDINAIRE 1N ST632393
RICH MC MS EISENHERZ 4L

MRL RINGO 16 H
MRL MISS 380M 581376
MISS MRL 645J

MUTIG
EDC POLL MAGNUM 1B
EISENHERZ
RICHMOND MISS MOSES 77G
ARNOLD'S ZAMUTWO D9
JAV MS DAYTIME 17F
FS MR DYNASTY 345C
MISS MRL 305F

BW: 102. 205 day: 732.
EPDs Spring 2012: -0.5 6.7 45.0 68.5 2.9 32.3 9.8
Exposed Dec 16/11 to Jan 25/12 to Sunny Valley Horizon 67R P639604.
Polled Fullblood. Big strong cow with great bull calf, BHDM 564X, also on offer.



\$1,700.00

150. AWL STYLE 62R

POLLED FULLBLOOD FEMALE
P649118

AWL 62R

5 March 2005

EISENHERZ
AWL STOUT EISENHERZ 37M PT624920
DOUBLE BAR D SANDY 26L

EMPEROR
AWL EMPRESS 3J P525008
SHADYCREEK QUEENIE

ECKHOLM 41053
037131389
BAR NONE MAXIMIZER
RICHMOND MISS ZUMUTO 40F
EMSIG
351
AWL HIGH FIVE 20A
AWL MS SUPERMAC 24Y

BW: 102. 205 day: 631.
EPDs Spring 2012: 1.5 4.7 25.9 43.0 4.4 25.7 12.7
Bred AI Dec 3/11 to BBBG Bradock 2T T675216-KN and exposed Dec 23/11 to Jan 25/12 to Sunny Valley Horizon 67R P639604.
Polled Fullblood. She and her bull calf, BHDM 608X, both sell today.



151. AWL EDN 6R

POLLED FULLBLOOD FEMALE
P649100

AWL 6R

31 January 2005

EISENHERZ
AWL RUFUS EISENHERZ 25M PT625757
BAR NONE BONNIE LASS

AWL EMPEROR 9H
AWL EMPRESS 15N P611820
EDN RAYLA 111B

ECKHOLM 41053
037131389
TAKAR
BAR NONE BONNIE
EMPEROR
DAYTON'S POL STAR 15B
EDN RAMBO 87Z
DEN ILLANA 71W

BW: 96. 205 day: 655.
EPDs Spring 2012: 3.5 4.0 32.3 53.0 4.9 32.4 16.2
Bred AI Nov 29/11 to Big Hills Razor 499X 739123 and exposed Dec 19/11 to Jan 25/12 to Sunny Valley Horizon 67R P639604.
Polled Fullblood. Big cow from the AWL program.



\$1,400.00

152. AWL MS 46P

POLLED FULLBLOOD FEMALE
P671892

AWL 46P

29 March 2004

EMPEROR
AWL EMPEROR 9H PT526325
DAYTON'S POL STAR 15B

AWL HIGH FIVE 20A
SHADYCREEK QUEENIE P283826
AWL MS SUPERMAC 24Y

EMSIG
351
POLLED STAR PALM
DAYTON'S 50Z
BAR 5 CROWN ROYAL 419W
AWL POLARINE SPARTAN
AWL SUPERMAC 8U
EU MS SALVATOR 135J

BW: 108.
EPDs Spring 2012: 0.0 5.6 27.9 42.4 5.2 24.1 10.1
Bred AI Nov 25/11 to BBBG Bradock 2T T675216-KN and exposed Dec 15/11 to Jan 25/12 to Sunny Valley Horizon 67R P639604.
Polled Fullblood. From the well-known Emperor line and her daughter, BHDM 588X, also sells today.

\$1,250.00

153. AWL MISS 15P

POLLED FULLBLOOD FEMALE
P674051

AWL 15P

18 March 2004

BAR NONE MAXIMIZER
DOUBLE BAR D MAX 20L 560855
TVP LILLIAN 78G

HARKAWAY MR STAR 38Z
AWL STARLET 15E P325875
CJB MISS DOLLY 12Z

BAR NONE MAINSTREAM
COUNTRY CHARM
BAR NONE ADLER
TVP LILLIAN 60D
FARNHAM 5 STAR
HARKAWAY POLAS LEGEND
BIG DISCOVERY 19U
BLO MS EXTRA 44T

BW: 100.
EPDs Spring 2012: 5.0 2.4 37.5 58.8 6.7 29.3 10.5
Exposed Nov 30/11 to Dec 20/11 to AWL Stout Eisenherz 37M PT624920 and exposed Jan 10 to Jan 25/12 to Sunny Valley Horizon 67R P639604.
Polled Fullblood. Red with white face. Her bull calf, BHDM 567X, is on offer today.

\$1,250.00



154. AWL MS 36P

POLLED FULLBLOOD FEMALE
P671882

AWL 36P

25 February 2004

EISENHERZ
AWL RUFUS EISENHERZ 25M PT625757
BAR NONE BONNIE LASS

EMPEROR
AWL EMPRESS 1M P581125
AWL WESTERN LASS 15K

ECKHOLM 41053
037131389
TAKAR
BAR NONE BONNIE
EMSIG
351
ELTON POLLED WESTERN 23H
AWL STARLET 13G

BW: 90.
EPDs Spring 2012: 5.0 3.3 30.8 51.3 4.7 30.2 14.8
Bred AI Nov 30/11 to BHR Baron SA 2842P T645655 and exposed Dec 29/11 to Jan 25/12 to Sunny Valley Horizon 67R P639604.
Polled Fullblood. Red with goggle eyes. Her daughter, BHDM 48S, and her bull calf, BHDM 590X, both sell today.

\$2,700.00

155. AWL MS 19P

POLLED FULLBLOOD FEMALE
P671870

AWL 19P

6 February 2004

EDN ECHODALE 118E
MASTERLOC ARMAGEDDON 8J P512677
MASTERLOC G U R A Q T 1F

AWL TOPHAND 1F
AWL TOPGIRL 15H P316108
AWL MS ROJO 6D

EDN SIR ECHO 21C
EDN FASCINATION 30C
FS MR DYNASTY 345C
MASTERLOC GOLDEN LEGEND
RICHWOOD TOPHAND 809C
BAR 5 SILHOUETTE 203D
SWITZ POL SENOR ROJO
SOFTWINDS TALLULA

BW: 103.
EPDs Spring 2012: 2.5 5.0 33.6 55.8 4.9 25.7 8.9
Bred AI Dec 8/11 to AWL Stout Eisenherz 37M PT624920 and exposed Dec 28/11 to Jan 25/12 to Sunny Valley Horizon 67R P639604.
Polled Fullblood. Bred from hard-to-find reliable bloodlines of the past.

\$1,250.00

156. AWL BLONDIE 4L

POLLED FULLBLOOD FEMALE
P579761

AWL 4L

20 January 2001

RICHWOOD TOPHAND 809C
RICHWOOD BRUNO 809G P391601
MARYWOOD BURNADETTE

BAR 5 MR ENFORCER 309C
AWL MS ENFORCER 16J P524989
BAR 5 MS FLECK BEST 390Z

SIR ARNOLD 809G
3J MS WESTERN 19Z
GREAT GUNS BRUNO 21X
HRC ABBEY 12A
HARKAWAY ENFORCER 16Y
BAR 5 MS LEADER 467W
BAR 5 MR BEST 268N
BAR5 MS ABRICOT 411S

BW: 96. 205 day: 710. 365 day: 1180.
EPDs Spring 2012: 3.0 4.2 33.0 55.8 8.2 28.6 12.1
Bred AI Dec 14/11 to AWL Stout Eisenherz 37M PT624920 and exposed Jan 2 to Jan 25/12 to Sunny Valley Horizon 67R P639604.
Polled Fullblood. Blond with a white face. Seasoned mother with plenty of calves to prove her value. Bull calf, BHDM 556X, sells today.



\$1,550.00

1118R
 MV RED LIGHT 406
ELLINGSON THE ROCK J928 PG550831
 ELLINGSON MSAMERICA F708

1118R
 LEACHMAN PERFECTION 7520
CONRAY OBSESSION 518H G506189
 CONRAY CHANDLER 218B

BW: 96. 205 day: 543. 365 day: 858. EPDs Spring 2012: 4.0 1.6 27.2 42.7 1.2 17.9 4.3
 Bred AI Dec 2/11 to Wheatland Red Hummer PG666755 and exposed Dec 22/11 to Jan 25/12
 to Skors Dream On 124U BPG702042.

1118R
 GW-CPL RED ALERT
 LEACHMAN RED BALDY Z279
 ER AMERICANA 537B
 KS ASTUTE LADY X298
 S&S ECLIPSE
 MISS MGL 43T
 BDN COUNTRY GOLD 1R
 CONRAY MARJORY 217M

157. CONRAY OBSESSION 1118R

POLLED PUREBRED FEMALE
 PG642483

IXE 1118R

9 March 2005

Polled Purebred. Proven genetics from Conray Cattle Co.

158. BIG HILLS MS QUAKE 318W

POLLED PUREBRED FEMALE
 PG718189

BHDM 318W

14 January 2009

318W
 HOOK'S RED QUORUM 55H
BIG HILLS EARTHQUAKE 101T PG684894
 BIG SKY RITA 30R

318W
 BLCC 174R
BIG HILLS RED LADY 143T PG691283
 AWL MS 29P

BW: 82.
 EPDs Spring 2012: 8.5 0.1 27.1 53.7 6.4 20.1 6.5
 Exposed Dec 6/11 to Jan 25/12 to Skors Dream On 124U BPG702042.
 Polled Purebred. Dark red Big Hills Earthquake daughter.

318W
 MV RED LIGHT 406
 HOOK'S APPLAUSE 59F
 MMP RED TOP GUN 28L
 BIG SKY LYNX 39L
 MEYERS RED TOP
 HF/GFI RUBY RED 33E
 DOUBLE BAR D LINCOLN
 AWL LEXY 8H

159. BIGHILLS LADY JAGUAR 266U

POLLED PUREBRED FEMALE
 PG696001

BHDM 266U

22 February 2008

266U
 DRIFTING "M" LP 59L
DOUBLE BAR D JAGUAR 128S PG666059
 IPU RED MS NOPHALT 121M

266U
 AWL STOUT EISENHERZ 37M
BIG HILLS LADY STOUT 54S P684964
 AWL ACE 39P

BW: 70.
 EPDs Spring 2012: 10.5 0.2 28.3 55.9 5.4 24.6 10.4
 Exposed Dec 6/11 to Jan 25/12 to Skors Dream On 124U BPG702042.
 Polled Purebred. Red with blaze face.

266U
 PVF-BF BF26 BLACK JOKER
 DRIFTING "M" GRETA 4G
 PPSR NOPHALT 20H
 TNT MISS JERILYN J322
 EISENHERZ
 DOUBLE BAR D SANDY 26L
 MRL ACE 27G
 MRL MISS 380M

\$1,425.00

160. BIG HILLS LADY STING 166T

BLACK POLLED PUREBRED FEMALE
 BPG691272

BHDM 166T

27 February 2007

166T
 RC STINGER 072K
CDP STING 25R BPG639441
 X-T DESTINYS DOLL 16L

166T
 ABC MR MAINSTREAM 520F
CONRAY BRASSY 816N PG616870
 TFED RED PEPPER 516K

BW: 90.
 EPDs Spring 2012: 2.5 4.9 47.6 69.8 6.4 28.6 4.8
 Bred AI Dec 1/11 to Wheatland El Toro 958W BPG722093 and exposed Dec 21/11 to Jan
 25/12 to Skors Dream On 124U BPG702042.
 Polled Purebred. Our only black cow on offer.

166T
 CCR GRIFFEY
 MISS RC 600U 501F
 NICHOLS BLK DESTINY D12
 X-T MISS STOCK 67H
 BAR NONE MAINSTREAM
 DCW MISS POLL SIGNAL 18B
 LCHMN BODYBUILDER 7303F
 CONRAY VICTORIA 16H

\$1,400.00

161. BIG HILLS LADY STING 164T

POLLED PUREBRED FEMALE
 PG691270

BHDM 164T

25 February 2007

164T
 RC STINGER 072K
CDP STING 25R BPG639441
 X-T DESTINYS DOLL 16L

164T
 ELLINGSON THE ROCK J928
CONRAY NAPONEE 616N PG616820
 CONRAY SWEET PEA 16J

BW: 100.
 EPDs Spring 2012: 6.5 2.2 38.3 59.7 5.9 21.8 2.6
 Exposed Dec 6/11 to Jan 25/12 to Skors Dream On 124U BPG702042.
 Polled Purebred Red. Her daughter, BHDM 557X, sells.

164T
 CCR GRIFFEY
 MISS RC 600U 501F
 NICHOLS BLK DESTINY D12
 X-T MISS STOCK 67H
 MV RED LIGHT 406
 ELLINGSON MSAMERICA F708
 LEACHMAN PERFECTION 7520
 CONRAY PEEWEE 16Z

\$1,000.00

162. BIG HILLS RED LADY 161T

POLLED PUREBRED FEMALE
PG691269

BHDM 161T

15 February 2007

MEYERS RED TOP
BICC 174R PT6650029
HF/GFI RUBY RED 33E

DOUBLE BAR D MAX 20L
AWL MISS 15P P674051
AWL STARLET 15E

MEYERS BLACKTOP 206Y
MISS GX 630N
BURNS BULL X339U
ER MISS JB91X 9A
BAR NONE MAXIMIZER
TVP LILLIAN 78G
HARKAWAY MR STAR 38Z
CJB MISS DOLLY 12Z

BW: 104
EPDs Spring 2012: 6.0 2.1 33.3 55.9 6.2 25.9 9.2
Exposed Dec 6/11 to Jan 25/12 to Skors Dream On 124U BPG702042.
Polled Purebred. Her dam, AWL 15P, also sells today.

163. BIG HILLS LADY MARR 159T

POLLED PUREBRED FEMALE
PG691278

BHDM 159T

15 February 2007

IPU RED WARRIOR 101L
DOUBLE BAR D WARRIOR 143N PG604973
DOUBLE BAR D STREET 714G

RICHWOOD BRUNO 809G
AWL BLONDIE 4L P579761
AWL MS ENFORCER 16J

HART RED CHIEF J242
LBR C-364
DOUBLE BAR K L WALL STREET
DOUBLE BAR D 9D
RICHWOOD TOPHAND 809C
MARYWOOD BURNADETTE
BAR 5 MR ENFORCER 309C
BAR 5 MS FLECK BEST 390Z

BW: 103.
EPDs Spring 2012: 5.0 3.5 30.3 52.9 6.7 22.9 7.7
Exposed Dec 6/11 to Jan 25/12 to Skors Dream On 124U BPG702042.
Polled Purebred. Low set Red cow, her mother, AWL 4L, also sells.

\$1,300.00



164. BIG HILLS LADY WHEAT 160T

POLLED PUREBRED FEMALE
PG691279

BHDM 160T

15 February 2007

WHEATLAND BULL 131L
WHEATLAND BULL 462P BPT6622879
WHEATLAND LADY 902J

DOUBLE BAR D BLK CRK 86M
WLB 86M RUBY 354R BPG639088
DCR MS AFTER SHOCK L8Z

NICHOLS BLK DESTINY D12
WHEATLAND LADY 908J
ER RED DECK 639D
WHEATLAND LADY 702G
GW BLACK CREEK 289J
TSS BLK MADRISSA 048K
TNT AFTERSHOCK G404
DCR MISS ARAPAHOE J136

BW: 85.
EPDs Spring 2012: 9.5 0.1 28.7 49.7 6.4 21.1 6.7
Exposed Dec 6/11 to Jan 25/12 to Skors Dream On 124U BPG702042.
Polled Purebred. Her proven genetics are shown in her heifer calf, BHDM 586X, also for sale.

\$1,475.00

165. BIG HILLS LADY STING 155T

POLLED PUREBRED FEMALE
PG691276

BHDM 155T

12 February 2007

RC STINGER 072K
CDP STING 25R BPG639441
X-T DESTINY'S DOLL 16L

OMF LONG CUT J6
Z-BAR PANTHEA 38P G620208
ZBAR IDYLLES GAL

CCR GRIFFEY
MISS RC 600U 501F
NICHOLS BLK DESTINY D12
X-T MISS STOCK 67H
MEYERS RED TOP
OMF SADEVCE G-26
SBSF MR LEGGACY
ZBAR IDYLLE

BW: 94.
EPDs Spring 2012: 4.5 4.0 46.4 72.3 6.4 25.2 2.0
Exposed Dec 6/11 to Jan 25/12 to Skors Dream On 124U BPG702042.
Polled Purebred. Red with a blaze face. Her mother, ZBAR 38P, is on offer today. Her heifer calf, BHDM 544X, also sells today!

\$1,800.00

166. BIG HILLS RED LADY 123T

POLLED PUREBRED FEMALE
PG691290

BHDM 123T

17 January 2007

MEYERS RED TOP
BICC 174R PT6650029
HF/GFI RUBY RED 33E

CROSSROAD MAVERICK 112L
AWL ACE 40P 656512
MRL MISS 363M

MEYERS BLACKTOP 206Y
MISS GX 630N
BURNS BULL X339U
ER MISS JB91X 9A
ABR SIR ARNOLDS IMAGE
IPU MS. FRANCESCA 7J
MRL RINGO 16 H
MISS MRL 291F

BW: 90.
EPDs Spring 2012: 6.5 1.6 28.3 45.7 6.4 23.4 9.2
Exposed Dec 6/11 to Jan 25/12 to Skors Dream On 124U BPG702042.
Polled Purebred. Dark red. Her bull calf, BHDM 566X, sells today!

\$1,300.00

167. BIG HILLS LADY WARR 118T

PUREBRED FEMALE
G691287

BHDM 118T

15 January 2007

IPU RED WARRIOR 101L
DOUBLE BAR D WARRIOR 143N PG604973
DOUBLE BAR D STREET 714G

JFRS PACESETTER 49W
AWL DOOLITTLE 2ND 8F P375453
DOOLITTLE 37D

HART RED CHIEF J242
LBR C-364
DOUBLE BAR K L WALL STREET
DOUBLE BAR D 9D
CET EXTRA BEST 87K
MAL HOLLY 18R
MJH BRUTUS 21B
PRINCESS SUNRISE MJH 3Y

BW: 102.
EPDs Spring 2012: 4.5 3.9 31.1 50.6 5.4 22.0 6.4
Exposed Dec 6/11 to Jan 25/12 to Skors Dream On 124U BPG702042.
Horned Purebred. A Warrior daughter. Her bull, 611X, also sells today.

\$1,300.00

168. BIG HILLS RED LADY 100T

POLLED PUREBRED FEMALE
PG691291

BHDM 100T

2 January 2007

MEYERS RED TOP
BICC 174R PT6650029
HF/GFI RUBY RED 33E

KJLI THE ROCK 1L
AWL MISS 38R PG649114
AWL BRUNETTE 1K

MEYERS BLACKTOP 206Y
MISS GX 630N
BURNS BULL X339U
ER MISS JB91X 9A
SPRINGCREEK WARREN 50H
LFE AMBER 27H
RICHWOOD BRUNO 809G
AWL LEXY 8H

BW: 90.
EPDs Spring 2012: 4.5 3.7 33.1 56.7 6.9 20.9 4.3
Exposed Dec 6/11 to Jan 25/12 to Skors Dream On 124U BPG702042.
Polled Purebred. See her and her daughter, BHDM 548X, to see what this line can do.

\$1,300.00

169. BIG HILLS LADY WARRIOR 9S

POLLED PUREBRED FEMALE
PG684943

BHDM 9S

16 January 2006

IPU RED WARRIOR 101L
DOUBLE BAR D WARRIOR 143N PG604973
DOUBLE BAR D STREET 714G

RICHWOOD BRUNO 809G
AWL BRUNETTE 6M P579775
AWL EMPRESS 3J

HART RED CHIEF J242
LBR C-364
DOUBLE K L WALL STREET
DOUBLE BAR D 9D
RICHWOOD TOPHAND 809C
MARYWOOD BURNADETTE
EMPEROR
SHADYCREEK QUEENIE

BW: 110.

EPDs Spring 2012: 5.5 3.1 28.5 50.5 6.4 21.7 7.4

Exposed Dec 6/11 to Jan 25/12 to Skors Dream On 124U BPG702042.

Polled Purebred. See her genetics at work in her bull calf, BHDM 549X, who is also on offer today.



\$2,000.00

170. BIGHILLS LADY WARRIOR 27S

POLLED PUREBRED FEMALE
PG684951

BHDM 27S

27 January 2006

IPU RED WARRIOR 101L
DOUBLE BAR D WARRIOR 143N PG604973
DOUBLE BAR D STREET 714G

RICHWOOD BRUNO 809G
AWL BRUNETTE 22K P545873
MISS ACCELERATOR 354B

HART RED CHIEF J242
LBR C-364
DOUBLE K L WALL STREET
DOUBLE BAR D 9D
RICHWOOD TOPHAND 809C
MARYWOOD BURNADETTE
BAR 5 ACCELERATION 372Y
G7 MS GREER 10Z

BW: 108.

EPDs Spring 2012: 4.0 4.2 39.4 70.3 6.2 28.8 9.1

Exposed Dec 6/11 to Jan 25/12 to Skors Dream On 124U BPG702042.

Polled Purebred. Red with a striking blaze face. Her bull calf, BHDM 581X, also on offer.

\$1,300.00

171. AWL RED LADY 63R

POLLED PUREBRED FEMALE
PG668027

AWL 63R

7 March 2005

IPU RED WARRIOR 101L
DOUBLE BAR D WARRIOR 143N PG604973
DOUBLE BAR D STREET 714G

AWL EMPEROR 9H
AWL EMPRESS 20N P611822
AWL MS ROJO 6D

HART RED CHIEF J242
LBR C-364
DOUBLE K L WALL STREET
DOUBLE BAR D 9D
EMPEROR
DAYTON'S POL STAR 15B
SWITZ POL SENOR ROJO
SOFTWINDS TALLULA

BW: 78. 205 day: 621.

EPDs Spring 2012: 8.0 1.0 21.0 38.4 5.2 17.0 6.5

Exposed Dec 6/11 to Jan 25/12 to Skors Dream On 124U BPG702042.

Polled Purebred. Red with blaze face, and her daughter, BHDM 587X, sells today.

\$1,000.00

172. BIG HILLS MORGAN 7S

POLLED PUREBRED FEMALE
PG684941

BHDM 7S

14 January 2006

NLC 64Y TOMCAT
NLC GOOD A NUFF 33G P6500946
NLC A03 AVALINE

OMF LONG CUT J6
Z-BAR PANTHEA 38P G620208
ZBAR IDYLLES GAL

CHERITHBROOK MR ABE
KS BM N713
LEACHMAN RED BALDY 438W
NLC Y23 YAKUT
MEYERS RED TOP
OMF SADEVCE G-26
SBSF MR LEGGACY
ZBAR IDYLLE

BW: 86.

EPDs Spring 2012: 7.5 1.6 32.3 55.2 3.9 18.2 2.0

Exposed Dec 6/11 to Jan 25/12 to Skors Dream On 124U BPG702042.

Polled Purebred. Her mother, ZBAR 38P, on offer, as well as her bull calf, BHDM 596X.

\$1,300.00



173. AWL MISS 38R

POLLED PUREBRED FEMALE
PG649114

AWL 38R

3 February 2005

SPRINGCREEK WARREN 50H
KJLI THE ROCK 1L P6558758
LFE AMBER 27H

RICHWOOD BRUNO 809G
AWL BRUNETTE 1K P545864
AWL LEXY 8H

KULAWAY WARREN 256B
ABC MS RED BALDY 921C
ER RED DECK 639D
LFE AMBER 68E
RICHWOOD TOPHAND 809C
MARYWOOD BURNADETTE
HVR LEXUS D372
SHADYCREEK QUEENIE

BW: 105. 205 day: 599.

EPDs Spring 2012: 1.0 6.2 38.3 62.1 8.2 19.8 0.6

Bred AI Dec 3/11 to BDS Mr Liner 70X PG740537 and exposed Dec 23/11 to Jan 25/12 to Skors Dream On 124U BPG702042.

Polled Purebred. If you like Reds big, this is your girl!

\$1,400.00

174. Z-BAR PANTHEA 38P

PUREBRED FEMALE
G620208

ZBAR 38P

30 January 2004

MEYERS RED TOP
OMF LONG CUT J6 PG590778
OMF SADEVCE G-26

SBSF MR LEGGACY
ZBAR IDYLLES GAL S6368920
ZBAR IDYLLE

MEYERS BLACKTOP 206Y
MISS GX 630N
MV RED LIGHT 406
OMF MS SCARLET E21
PPSR LEGGACY RETURN
MISS DESTANATION 16Z
Z-BAR WILSON
MS IDYLLE 149T

BW: 108. 205 day: 744.

EPDs Spring 2012: 2.0 4.6 42.0 64.6 4.2 23.8 2.8

Bred AI Dec 2/11 to Ankonian Red Caesar PTG670682 and exposed Dec 22/11 to Jan 25/12 to Skors Dream On 124U BPG702042.

Polled Purebred. Two daughters in the sale, BHDM 7S and BHDM 155T. Genetics proven by performance. Don't miss their offspring.

\$1,225.00



Terms & Conditions

TERMS - The terms of the sale are cash or cheque payable at par at sale location unless satisfactory credit arrangements have been made previous to the sale. The right of property shall not pass until after settlement is made. Transcon Livestock Corp. reserves the right to require a certified cheque as settlement before releasing any sale cattle. Should any purchaser fail to settle for his purchase Transcon Livestock Corp. reserves full power to resell the animal to the best advantage either publicly or privately, without further notice. Any loss arising from such resale together with keep and all other expenses shall be payable by the defaulter. All settlements must be made with the clerks of the sale before any cattle will be released.

BID - Every animal consigned to the sale must be sold by auction. No private sales will be allowed except as otherwise provided for in the terms and conditions. No by-bidding will be permitted. Each animal will be sold to the highest bidder.

DISPUTES - In cases of disputes, bidding will be reopened between the parties involved. If no further bid is made the buyer will be the person from whom the auctioneer accepted the last bid. The auctioneer's decision in such matters will be final.

PURCHASER'S RISK - Each animal becomes the risk of the purchaser as soon as sold. Animals will be cared for at the purchaser's risk for a reasonable length of time.

INFORMATION SUPPLIED - The information contained in this catalog is believed to be true and accurate. However, the information has been supplied by the seller and neither Transcon Livestock Corp. or Jamesway Enterprises Ltd. assume any responsibility if the information supplied is not accurate.

CATTLE PICTURES - The images in this catalog are believed to be accurate representations of the individual animals. Transcon Livestock Corp. and Jamesway Enterprises Ltd. assume no responsibility if the images as received have been altered.

ANNOUNCEMENTS from the auction block will take precedence over the printed matter in the catalog. Buyers are therefore cautioned to pay attention to any such announcements.

CERTIFICATE OF REGISTRY - A registration/recordation certificate issued by the applicable breed association and duly transferred will be furnished to the buyer of each animal after settlement has been made. It is the responsibility of the buyer to determine the acceptance of this certificate in any other association.

SHIPPING - Assistance will be given in making shipment after the sale but no risk is assumed by the Sales Management or Seller. Expenses incurred are the responsibility of the purchaser. Purchasers are requested to furnish shipping instructions when making settlement.

BREEDERS GUARANTEE - As per applicable Canadian Breed Association Breeding Guarantee guidelines. Copies are available at the sale settlement desk to be picked up by the buyer at any time. In no event shall the seller be responsible for reimbursing more than the purchase price.

HEALTH - It is the buyer's responsibility to determine health requirements for importing any animal into his province or state. Transcon Livestock Corp. assumes no responsibility for the health status of any animal in the sale.

ACCIDENTS - Although every precaution will be taken to protect the safety and comfort of buyers, neither the Sales Management, auctioneer, consignors. or Association assumes any responsibility in this matter and disclaims any liability legal or otherwise in the event of accident or loss of property.

RIGHTS AND OBLIGATIONS - The above terms and conditions of the sale shall constitute a contract between the buyer and the seller and be equally binding to both. Resale of animals following purchase in this sale shall constitute a separate transaction and the rights and obligations of the two parties connected thereto are not covered by the terms and conditions of this sale.

TRANSCON LIVESTOCK CORP. IS AGENT ONLY - It is to be clearly understood that Transcon Livestock Corp. is only acting as a medium between buyer and seller and is not in any way responsible for any failure on the part of either party to live up to his obligations, neither does Transcon Livestock Corp. assume any financial obligations to collect or enforce collection of any monies between parties, and any legal action that may, in exceptional cases, be taken, must be between buyer and seller.

The Auctioneer shall have the right to refuse bids from anyone who has a previous record of default in payment or who has not made proper credit clearance prior to the sale with the owner or Sale Managers.

