

*Transcon Livestock Presents*

# **The National Trust**

*Chapter VIII*

# ON ICE

*Semen & Embryo  
Auction*

SATURDAY 2015  
**December 19th**  
*6:30 p.m.*

**WESTERNER PARK  
RED DEER, AB**

## National Trust Chapter VIII Consignors

<p><b>Alliance Simmental Farms</b> 26, 27  <b>Mike McCart</b>                      Box 542, North Gower, ON K0A 2T0                      Ph: 613 836-8096 Cell: 613-229-4857                      email: alliancesimmentals@gmail.com</p>	<p><b>JNR Farms</b> 2, 22  <b>Jerry &amp; Nicole Repka</b>                      RR 1, Willingdon, AB T0B 4R0                      780 636 3458 Cell 780 210-BEEF                      email: jrepka@telus.net</p>	<p><b>Shawacres</b> 43, 44  <b>Sterling Shaw</b>                      Box 626, Kyle, SK S0L 1T0                      306 375-7913                      email: shawacres1@gmail.com</p>
<p><b>Beechinor Bros. Simmentals</b> 4, 5, 23                      RR 1, Bentley, AB T0C 0J0  <b>Stefon &amp; Rebecca Beechinor</b>                      Cell: 403 597-4001  <b>John &amp; Michelle Beechinor</b>                      Ph: 403 748-2406 Cell: 403 352-8704                      email: beechbros@hotmail.com</p>	<p><b>JT Livestock Ltd.</b> 49                      John &amp; Tammy Dolliver                      Box 788, Stettler, AB T0C 2L0                      Ph: 403 742-3939                      email: jt.live@live.ca</p>	<p><b>Skywest Simmentals</b> 19  <b>Riley, Jolene, Mykena &amp; Jaxyn Edwards</b>                      RR 1, Didsbury, AB T0M 0W0                      Ph: 403 507-9606                      email: riley-edwards@live.com</p>
<p><b>Blue Spruce Simmentals</b> 41  <b>Harold Albrecht</b>                      Box 213, Vegreville, AB T9C 1R2                      780 632-7147</p>	<p><b>Keato Meadow Simmentals</b> 30  <b>Jonathan &amp; Ebony Kittlitz</b>                      55231 Rg Rd 205, Ft Saskatchewan, AB                      T8L 4B7                      780 997-0369 Cell: 780 920-7589                      email: keatomeadowsimms@live.com                      website: keatomeadowsimmentals.com</p>	<p><b>South Seven Farms Ltd.</b> 41  <b>Robert, Linden &amp; Nolan Stuart</b>                      Box 2118, Vegreville, AB T9C 1T3                      780 632-6877 Cell: 780 632-9358                      email: sseven@telusplanet.net</p>
<p><b>Bogart Cattle Co.</b> 45, 46  <b>Eric Doran</b>                      73 Clairfields Dr. West, Guelph, ON N1G 5H9                      Cell: 613 438-2599                      email: bogartcattlecompany@gmail.com</p>	<p><b>Langer Fleckvieh Simmentals</b> 9-17, 47  <b>Lyle &amp; Pam Langer</b>                      PO Box 6725, Edson, AB T7E 1V1                      Pam 780 712-7137 Lyle: 780 725-1215                      email: llanger@telus.net                      website:  <a href="https://www.facebook.com/LangerFleckvieh-Simmentals">https://www.facebook.com/LangerFleckvieh-Simmentals</a></p>	<p><b>Starwest Farms</b> 24, 25  <b>Ken &amp; Carol Warkentin,</b>                      49989 Castleman Rd., Chilliwack, BC V2P                      6H4  <b>Manager John Cartwright</b> Ph: 604 794-7908                      email: starwestfarms@gmail.com</p>
<p><b>Czech-Mate Livestock</b> 3  <b>Jim, Gwen &amp; AJ Smith</b>                      Box 651, Carstairs, AB T0M 0N0                      Ph: 403 337-2997 Cell: 403 818-3106                      email: czech@xplornet.com                      website: czech-matelivestock.com</p>	<p><b>Mader Ranches</b> 6, 7  <b>Ryley &amp; Jill Mader &amp; family</b>                      403 337-4014 Cell: 403 807-8140  <b>Randy &amp; Ronda Mader</b> 403 337-2928                      email: maderranches@gmail.com                      website: www.maderranches.com</p>	<p><b>Stout Brothers Simmentals</b> 29  <b>Cameron or Mackenzie Stout</b>                      RR 1, Bluffton, AB T0C 0M0                      Ph: 403 843-6107                      Cam's cell: 403 963-1034                      Mac's cell: 403 913-9453                      email: tbk@ccewireless.ca</p>
<p><b>Eagle-Ridge Simmentals</b> 37  <b>Denny &amp; Dallas McLean</b>  <b>Danny &amp; Loretta Blain</b>                      RR 2, Olds, AB T4H 1P3                      Ph: 403 556-2598 Cell: 403 556-0903                      email: dallas7@xplornet.com</p>	<p><b>Oakview Simmentals</b> 28  <b>Todd, Danna, Brooke &amp; Hayden Collins</b>                      Box 37, RR 2, Darlingford, MB R0G 0L0                      Ph: 204 246-2166 Cell: 204 823-1434                      email: oakviewsimmentals@inethome.ca                      website: oakviewsimmentals.com</p>	<p><b>Ultra Livestock</b> 8  <b>Tim, Cathy &amp; Riley Chalack</b>                      RR 2, Carstairs, AB T0M 0N0                      Ph: 403 337-5881 Tim cell: 403 669-8938                      Riley cell: 403 992-6748                      email: ultratimlivestock@gmail.com</p>
<p><b>Tim Havener</b> 18, 48                      Box 242, Elk Point, AB T0A 1A0,                      Ph: 780 724-3773 Cell: 780 614-7586                      email: thavener@telus.net</p>	<p><b>Parview Stock Farms</b> 21  <b>Brad Parker</b>                      Site 2, Box 9, RR 2, High River, AB T1V 1N2                      403 652-1234 Cell: 403 888-2183                      email: bcparker@xplornet.com</p>	<p><b>Virginia Ranch</b> 39  <b>Harry &amp; Michelle Satchwell</b>                      Box 47, Cremona, AB T0M 0R0                      403 637-2587 Cell: 403 818-4205                      email: virginiaranch@xplornet.com</p>
<p><b>Ferme Gagnon Inc.</b> 32 - 36  <b>Yves &amp; Francis Gagnon</b>                      426 route 315, Cheneville, PQ J0V 1E0                      Ph: 819 428-3502 Francis cell: 514 975-3722                      email: ferme_gagnon_farm@hotmail.com</p>	<p><b>Saugeen Acres</b> 38  <b>Dave Smyth</b>                      RR 1, Bowden, AB T0M 0K0                      Ph: 403 224-2340                      email: saugeen@xplornet.com                      website: saugeenacres.com</p>	<p><b>Whiskey River Stock Farm</b> 42  <b>Wade Loane</b>                      1929 Heatherdale Rd., RR 1, Montague PE                      C0A 1R0                      Ph: 902 838-4414 Fax: 902 838-3712</p>
<p><b>Jayshaw Simmentals</b> 31  <b>Jason &amp; Shawna Bast</b>                      Box 49, Lavoy, AB T0B 2S0                      Cells: Jason 780 603-0676                      Shawna 587 280-0956                      email: jseebast@gmail.com</p>	<p><b>Wolfe's Fleckvieh</b> 40  <b>Shane, Shannon, Hanna &amp; Carmen Wolfe</b>                      Site 11, Box 47, RR 1, Sundre, AB T0M 1X0                      Ph: 403 556-8584 cell: 403 556-0729                      email: wolfepack@airenet.com                      website: wolfesfleckvieh.ca</p>	

*Transcon Livestock Presents*

# The National Trust

*Chapter VIII*

# ON ICE

*Semen & Embryo  
Auction*

**All semen/embryos sell FOB the storage location listed with the individual lots.**

**Please include all these sales on your trip to Alberta:**

**Friday, December 18th**

Friday Night Lights Simmental Sale, Olds, AB

**Saturday, December 19th**

Checkers & Fullblood Perfection Simmental Sale, Ponoka, AB

**National Trust 'On Ice' Semen & Embryo Auction**

**5:30: "On Ice" pre-sale buffett meal**

\$20 and tickets available at the door or in advance by contacting

Transcon office at 403 638-9377

**6:30: "On Ice" sale**

**Sunday, December 20th**

Fleckvieh Equation Fullblood Simmental Sale, Red Deer

Ultimate Red & Black XVIII, Red Deer

**Auctioneer:**

Don Oberg & Robert Lind

**Special Representatives:**

Dennis Ericson      Ben Wright      Dory Gerrard

**Sale day phones:**

Transcon cells:

Jay Good 403 556-5563    Darren Paget 403 323-3985  
Glenn Norton 780 542-0634    Rick Smith 403 586-6568

**Sale Headquarters:**

Days Inn 403 340/3297

Catalog production by jameswaycatalogs.com, Okotoks, AB.

Cover Design by Keltey Whelan



## Sales Management Comments

As so many of you realize, The National Trust has been a profile sale with the ability to change as necessary “for the betterment of the breed”. The new look it has taken on as a “frozen” sale with charities involved, flushes and “picks” was a decision we made in the next “chapter” for The National Trust. We felt, as the already mentioned catch-phrase it has had, “for the betterment of the breed”, it was responsible as a marketing company to eliminate the live cattle element. The live cattle still sell, but through their own respective, geographically appropriate sales across the country! Responsible decision making in our opinion, as we don’t believe that current existing sales need to be dissected by removing top consignments from them, and allow all other sales to be as strong as possible as that is “for the betterment of the breed”. We encourage all of you to consign to sales that are locally operated and support them without submitting to the temptation of starting new sales. This breed has always carried a component of “the breed first” mentality in comparison to other breed’s breeders and we should be proud of that but also not take it for granted, and continue to work together on this philosophy.

The National Trust holds itself the evening prior to the classy Fleckvieh Equation and Ultimate Red & Black Sales and is the exclusively Simmental frozen genetic showcase sale that annually happens in this country. It was amazing the energy this sale created the evening prior to the powerhouse Equation and R&B sales, not to mention how successfully it “greased the wheels of commerce”. It was a “no-brainer” to continue on with the same format again this year.

The National Trust is an enjoyable evening started with a fantastic meal followed by a round-table auction setting where breeders can participate at many different price levels and enjoy camaraderie and genetic comparisons in a relaxed, fun-filled environment. It’s Saturday night Simmental fun!

Proudly signing off with a “Merry Christmas”,

Jaymes (Jay) Good  
Transcon Livestock Corp.



Jay Good  
403/556-5563



Glenn Norton  
780 542-0634



Darren Paget  
403 323-3985



Rick Smith  
403 586-6568



Sandra  
Office: 403 638-9377



Theresa  
Fax: 403 206-7786



Terry

## 1. “Bott Family” Donation

Our rural communities were rocked this fall with the unfathomable news of the death of 3 sisters in an agriculture accident. Locally, provincially and Canada wide, the news of this tragedy had farm families joining together to support the Bott family, and each other in this time of sadness.

Don Oberg sought an item to sell at an auction to benefit the family. He was able to secure this hockey jersey, signed by Taylor Hall. This collector Jersey was then sold at the Innisfail Auction Mart, on October 21st, during a sale of a donation steer. The steer (donated by Ryan Dodd) was sold 9 times raising over \$27,000, and all of the donation items raised an unprecedented \$39,636.47 for the family. Transcon Livestock was the winning bidder of this Jersey, and we are pleased to present it for auction again to benefit the Bott family.

We wish to recognize Don Oberg for taking the initiative to acquire the Jersey, and also Ryan Dodd and Innisfail Auction for their generous role in the October 21st benefit auction. We are proud to stand side by side with our agriculture friends to assist those in their time of need.

We will be auctioning raffle tickets to win the collector Jersey. Your generous support to assist this family is most sincerely appreciated.



## 2. Choice of One Heifer from our 2016 Calf Crop



Great Guns Willy Joe

Sired by one of these JNR walking herd sires



JNR Steele



JNR Bailiff



Brink Bullet Proof



JNR Salton

We at JNR Farms have always been strongly focused on maternal traits and developing solid cow families within our own herd. We are offering the opportunity to choose any one 100% Fleckvieh heifer from our 2016 calf crop sired by any one of these following five walking herd sires: JNR SALTON, GREAT GUNS WILLY JOE, JNR BAILIFF, JNR STEELE or BRINK BULLET PROOF. All of these sires are proven with current and/or previous bulls sold as well as numerous milking females and/or bred heifers.

There are approximately 90 females bred to these sires. This will give the purchaser the chance to see the calves at their mother's side as well as other females we have retained from that cow line and see the sire for themselves. We look forward to hosting and touring our pastures with whomever should be the fortunate purchaser.

The female must be selected by August 31st, 2016.



You pick!!



From these matrons and many others!



JNR Farms



# 3.

## Flush on MFI Red Petra 5179

Guaranteeing 5 transferable embryos with no limit — to be done prior to March 2016.



### MFI RED PETRA 5179

POLLED PUREBRED FEMALE  
PTG643190

MFI 179R

27 March 2005

3C WALLY C240 BLK  
LCHMN BODYBUILDER 7303F PG502869  
LSF MOMENTO D8

SOLWAY ADONIS  
MFL ZAILA 8Z T230705  
MFL PETRA 95P

EMMONS BLACK HERCULES  
3C CROCUS 9278 BL  
LEACHMAN RED BALDY 438W  
LBR B-248  
SCOTTISH NEFF  
BLYTHE  
MFL HAXAN 200L  
MFL FREYA 4M

BW: 89. 205 day: 655. 365 day: 937. EPDs: 0.3  
7.3 64.2 95.1 2.3 59.6 27.6



179R daughter sold to Randy Ward

179R granddaughter sold to Starwest

I have told a few people that we really don't like selling embryos from, or flushes on our top cows – having said that, here we are selling a flush on our great Bodybuilder daughter.

She calved this spring, giving us a full sister to the high selling heifer from Red & Black last year to Randy Ward for \$31,000. In 2013 Starwest bought a granddaughter



at the National Trust sale for \$17,000 and she has become one of their very top females. At 10 years of age, we decided to guarantee Petra's influence in our herd by flushing her back to Horizon in hopes of retaining more of her daughters.

We have always supported the National Trust sale and have been successful over the years, so it was only fitting to offer a flush on this productive female. Petra is a complete producer with her bull calves always selling well at the Bull Spectrum. We have two daughters working in our herd, and we look forward to her embryo calves in 2016.

Genetically she combines one of the top red bulls from a few years ago in Bodybuilder (who was known for producing awesome females) along with the great Zaila 8Z cow influence who was one of the great fullblood cows of her time.

This is a one time opportunity to advance your red program with proven, productive genetics!

**Czech-Mate Livestock**



MFI 179R sons



1 lot of 3 Canadian qualified embryos

# 4. KOP Ms Touchdown 67U Embryos



MRL Capone 130B



67U son

### Resulting Pedigree

TNT BOOTLEGGER Z68  
MRL CAPONE 130B PTG1116713  
MRL MISS 836W

IPU RED TOUCHDOWN 32S  
KOP MS TOUCHDOWN 67U PG697907  
3D MISS BLK BABE 461S

DCR MR MOON SHINE X102  
TNT MISS W70  
MRL BLACK BEAR 79S  
MRL MISS 828S  
WHEATLAND RED TEDDY 457P  
IPU RED POCAHONTAS 52N  
KWA DYNO 114P  
TH BLACK BABE 49M

Guarantee one (1) 60 day pregnancy if implanted by an accredited technician per 3 embryos. Stored at Davis-Rairdan International, Crossfield, AB.

Ms Touchdown 67U was one of the premier cows of the Kopp program with three sons averaging a strong \$18,000. Two of these sons include Esposito at Crossroads and our senior red herd bull. Commotion. Both her and her lone daughter were highlights of their dispersal sale and were high selling red females. 67U is angular, moderate framed, stout made, heavy milking and as easy doing as they come. We crossed her with one of the most talked about red bulls from this past spring. Capone, unfortunately, was injured before McMillen's bull sale and never got to grace the sales ring. Limited semen packages were offered and we were fortunate to be able to include him in our program. He is as complete a bull as you will find. He is phenotypically correct and packed full of muscle. Intriguing pedigree being a son of the popular outcross Bootlegger and the great MRL Miss 836W, making him a maternal sibling to MRL El Tigre.

**Beechinor Bros. Simmentals**

1 lot of 3 Canadian qualified embryos

# 5. Beech Bros She Devil 12S Embryos



Brink Bullet Proof A342



Vixen 567C - full sib to embryos

### Resulting Pedigree

BRINK HUCKLEBERRY Y158  
BRINK BULLET PROOF A342 1138132  
BRINK R785

BHR THREE SIXES SA L666E  
BEECH BRO SHE DEVIL 12S 652598  
EAGLE-RIDGE PATRICIA 25P

BRINK AMOS S621  
BRINK S648  
BRINK JAGG 218M  
BRG H805  
ERICO PRIMAL  
CONGOSIM SUSI  
ANCHOR "T" IMPACT 2H  
MFL HEIDI 23H

Guarantee one (1) 60 day pregnancy if implanted by an accredited technician per 3 embryos. Stored at Davis-Rairdan International, Crossfield, AB.

Opportunities like this do not come along very often. Here is the first chance to purchase embryos off of our herd matron, She Devil 12S. This cow has proven herself over and over with progeny topping every sale they are entered in. Her genetic potency is breeding true as those direct offspring are raising outstanding and high selling calves themselves. These embryos are sired by Brinks Bulletproof, an outstanding breeding piece who will continue to add fresh genetics to the Fleckvieh industry. His first set is a great group of soft sided, structurally correct calves with nice shape. The features of this sire group are full siblings to these embryos. They are also the headliners of our 2015 calf crop.

**Beechinor Bros. Simmentals**

3 Canadian, U.S. & Australian  
qualified embryos

# 6. Mader P Iron Sugar 7X Embryos



Springcreek Olympian 66A

son - Honey Badger



### Resulting Pedigree

SPRINGCREEK ALL IN 155Y  
SPRINGCREEK OLYMPIAN 66A BPG774968  
SPRINGCREEK LINNE 33R

MADER P BLACK IRONMAN 22U  
MADER P IRON SUGAR 7X BPTG731065  
LFE FAMOUS 632T

HART ALL IN W382  
SPRINGCREEK BLK TESS 73T  
RCC/TCF LINE DRIVE M181  
SPRINGCREEK JOSIE 58N  
REMINGTON ON TARGET 2S  
CG BLACK OPAL 652S  
R PLUS BLACKEDGE  
LFE KATARINA 59M

son - MDR 40A



Mader Iron Sugar 7X has quickly become one of the most phenotypically sought after females on the farm! Along with being the most winningest show female in 2012, making the top five in the Farmfair Supreme, and making top 10 in the RBC Supreme at Agribition, she is quickly establishing herself in production. Her first two natural sons topped our bull sale, and this year we were able to get over 15 embryo calves on the ground in both our spring and summer calving and they look great!

Here is a female that has a beautiful front end, piles of rib capacity, but her strongest asset is her udder attachment and her functionality on her feet and legs. Combined with the sheer power and ruggedness of the \$32,000 Olympian, this is bound to be a lucrative cross.

We plan to implant a lot of these eggs in the near future! Calves will be homo polled and homo black by parentage.

### Mader Ranches



Guaranteed one pregnancy, if implanted by a certified technician. Stored at Sundown Livestock Transplants Ltd., Cremona, AB.



3 Canadian, U.S. & Australian qualified embryos



**Kuntz Super Duty 4Y**



**son - MDR 115B**

**Resulting Pedigree**

NCB RED SUSPECT 30S  
**KUNTZ SUPER DUTY 4Y** PTG747559  
 MISS R PLUS 7037T

LRS RED REALITY 33J  
**TH RED LASS 11N** PG609939  
 BSF MS INFORMER 19J

LFE ROCK SOLID 366P  
 NCB BODACIOUS 91H  
 R PLUS 4012P  
 MISS R PLUS 3281N  
 PPSR COAL BLACK 65F  
 LRS MS PREFD STOCK 715G  
 ER RED INFORMER 586C  
 BSF MISS MACKFRID 45E

Guaranteed one pregnancy, if implanted by a certified technician. Stored at Sundown Livestock, Cremona, AB.

**7.**  
**TH Red Lass 11N Embryos**

Here is a red female that has had a large impact on consistently producing us some of our very best calves year after year! TH Red Lass has a calf registered to her every year of her production, that all sold in sales, excluding the two daughters we have retained in the herd. A few features include a daughter that sold through the Agribition sale a few years back to GB Farms, that then entered their donor program, and her most recent accomplishment was raising a bull that sold in our 2015 bull sale for \$10,500 as a sale feature.

At a late age of production we decided to flush this female due to her production record, huge body capacity, great big foot, and overall power as a momma cow! We had 6 full siblings to this mating born in our summer program this year, and they are hands down our best calves! Calves will be homo polled by parentage.

**Mader Ranches**



**daughter - MDR 39X**



3 Canadian & U.S. qualified embryos

8.

RF Throttled 311A

## Springcreek Blk Tess 25T Embryos

Resulting Pedigree

3D BLK FULL THROTTLE 483X  
RF THROTTLED 311A BPTG788498  
RF FLIRTIN FOR CERTIN 37U

SPRINGCREEK TANK 63P  
SPRINGCREEK BLK TESS 25T BPTG669971  
SPRINGCREEK LINNE 71P

WHEATLAND BULL 680S  
CROSSROAD RAMONA 375R  
LFE STREET LEGAL 510S  
TLG FLIRTIN WITH YOU  
MSR KANSAS TANK 235M  
NEVAS L93  
RCC/TCF LINE DRIVE M181  
SPRINGCREEK OPAL 12L

Guarantee one (1) pregnancy per three (3) embryos. Stored at Bova-Tech Ltd., Airdrie, AB.

Springcreek Lotto 52Y - \$77,000 son of 25T



Simmental bull at Farmfair and Agribition in 2014! After Brad told us how stout and consistent the calves were out of Throttled we knew he was the right bull to use. Throttled's explosive muscle shape and overall raw power combined with Blk Tess will ensure that the progeny will be genetic gems as well as very strong assets to your herd! Buy with confidence here as Tess 25T is a proven donor female! Embryos are exportable to USA as well.



Daughter of 25T  
sold at Blacksand  
Dispersal for \$17,000.



Homo polled & homo black by parentage. We are pleased to be a part of the 2015 National Trust on Ice Sale. We are offering a package of embryos out of the well known Spring Creek Blk Tess 25T! This female has produced some of the breed's best cattle. One of her biggest feats is being the dam of the \$77,000 Spring Creek Lotto 52Y. Tess is an extremely unique female; she is long spined with tons of rib dimension and is the most structurally correct cow we've ever seen as she's straight in her lines with a huge foot! We are expecting a large group of embryo calves for 2016 that we are very excited about and we want to share some of her strong genetics with you, so be sure not to miss out! We chose RF Throttled 311A as the sire, who is owned by Outlaw Cattle Company. Throttled was named Champion

Ultra Livestock

Bar 5 SA Hero 823M



MCC Terry 257J

3 Canadian qualified embryos

9.

### MCC Terry 257J Embryos

Resulting Pedigree

KYKSO HAPED  
BAR 5 SA HERO 823M T598603  
RU-DEV PEPPi

SALAMON  
MCC TERRY 257J T531718  
MRLN BRIDGET

KYKSO HADAU  
KYKSO PEDODI  
KYKSO ALEN  
RU-DEV PRUNEL  
SALUS  
MINKA  
BHL WESTERN 36R  
MRLN GABI

Langer Fleckvieh Simmentals

Overhall Hivy



MCC Terry 257J

3 Canadian qualified embryos

10.

### MCC Terry 257J embryos

Resulting Pedigree

OVERHALL BALMORAL  
OVERHALL Hivy 218217  
HOLLY

SALAMON  
MCC TERRY 257J T531718  
MRLN BRIDGET

SCOTTISH NEFF  
ANNEMIE  
HOLMAT  
LILO  
SALUS  
MINKA  
BHL WESTERN 36R  
MRLN GABI

Langer Fleckvieh Simmentals

IPU Bronson 19K



MCC Terry 257J

3 Canadian qualified embryos

11.

### MCC Terry 257J Embryos

Resulting Pedigree

PRL HOUSTON 005H  
IPU BRONSON 19K 543069  
DORA LEE FRANCESCA

SALAMON  
MCC TERRY 257J T531718  
MRLN BRIDGET

ROGANT  
MS PRL NITE-ANCHOR 109B  
ANTONIUS  
DORA LEE FRALINE  
SALUS  
MINKA  
BHL WESTERN 36R  
MRLN GABI

Langer Fleckvieh Simmentals

Richmond Mr Shareholder 43E



Oh Kay Seta FF 105S

3 Canadian & U.S. qualified

12.

### Oh Kay Seta FF 105S Embryos

Resulting Pedigree

BAR NONE SHAREHOLDER  
RICHMONDMRSHAREHOLDER 43E 324755  
MISS NOREMAC LCL 12B

DFM PERSONALITY 1P  
OH KAY SETA FF 105S 675517  
OH KAY PASTA FF89P

SIR ARNOLD 809G  
BAR NONE LAIKA  
SIM-ROC HANNES  
SWITZ POL PENNY FLECK  
IPU BRONSON 19K  
BROCK'S MEESHA  
ANCHOR D RED BARON 56M  
JACK PINE REITA FF76L

Langer Fleckvieh Simmentals

FGAF Seldom 835L



Miss TRH Marcy 7M

3 Canadian qualified embryos

13.

### Miss TRH Marcy 7M embryos

Resulting Pedigree

OVERHALL HIVY  
FGAF SELDOM 835L 550316  
RAJ MS ARNOLD 21F

DDD BROADWAY G534  
MISS TRH MARCY 7M 592653  
MRLN DULCIE

OVERHALL BALMORAL  
HOLLY  
SIR ARNOLD 809G  
JERICO'S DOROTHY JANE 1D  
SH ROMULUS F53R  
KLONDIKE KIM GNM 402B  
MRLN ROGAR  
MRLN DALLI

Langer Fleckvieh Simmentals

Emperor



DFM Patti 408P

3 Canadian & U.S. qualified embryos

14.

### DFM Patti Exportable Embyos

Resulting Pedigree

EMSIG  
EMPEROR P341803  
351

DDD BROADWAY G534  
DFM PATTI 408P T633732  
MISS DFM BONNIE 153B

EMPAU  
300  
EMPAU  
293  
SH ROMULUS F53R  
KLONDIKE KIM GNM 402B  
CANADIAN NEFF  
MISS DFM 8U

Langer Fleckvieh Simmentals



Baltimore



Purple Hill Frauline 33P

2 Canadian & U.S. qualified embryos

15.

### Purple Hill Frauline 33P Embryos

Resulting Pedigree

BALIST  
BALTIMORE 264715  
ASTINE

LITTLE GUNS ERIC  
PURPLE HILL FRAULINE 33P 639043  
PURPLE HILL MISS BALU 4M

BALDO  
TIMES  
MAURER  
ASTA  
GREAT GUNS BRUNO 21X  
GREAT GUNS LEAH 23D  
PURPLEHILL FRONTRUNNER  
RIVERBEND FALINE 17F

Langer Fleckvieh Simmentals

LFS Pol Balboa 40U



Purple Hill Frauline 33P

3 Canadian qualified embryos

16.

### Purple Hill Frauline 33P Embryos

Resulting Pedigree

DAYTON'S POL NEUMANN  
LFS POL BALBOA 40U PT713833  
RRV NATALIE

LITTLE GUNS ERIC  
PURPLE HILL FRAULINE 33P 639043  
PURPLE HILL MISS BALU 4M

BHR DOORN G629E  
DAYTON'S POLLED MARTHA  
IPU BRONSON 19K  
BROCK MISS LATEEFA  
GREAT GUNS BRUNO 21X  
GREAT GUNS LEAH 23D  
PURPLEHILL FRONTRUNNER  
RIVERBEND FALINE 17F

Langer Fleckvieh Simmentals

Smithbilt Levi 501L



DSLS Jasmine FF10J

4 Canadian qualified embryos

17.

### DSLS Jasmine FF10J Embryos

Resulting Pedigree

- |                                   |                      |
|-----------------------------------|----------------------|
| SH ROMULUS F53R                   | SIEGFRIED            |
| <b>SMITHBILT LEVI 501L 559386</b> | MILLHILL FLOWER      |
| SMITHBILT HESSIE 501H             | BEL WESTERN UNION 5Z |
|                                   | SRN MS UNIVERSE 1C   |
| ABR SIR ARNOLDS IMAGE             | SIEGFRIED            |
| <b>DSLS JASMINE FF10J 520627</b>  | ABR SHINAGH VIOLET   |
| RICOCHET GABBEE 78G               | IGLHOFF JR Y635      |
|                                   | RICOCHET COONEE 50E  |

Langer Fleckvieh Simmentals

Great Guns Mitzi 11X



Baltimore

18.

- |   |   |
|---|---|
| A. Great Guns Mitzi 11X #173622 x Mr Lynn 009Y Hafke US#1202382 | 1 |
| B. RHY Faith 05F #369470 x Moll 2nd #887                        | 2 |
| C. Great Guns Rachel 29X #173628 x Great Guns Rex 7A #240469    | 1 |
| D. Boronia #276380 x Baltimore #264715                          | 3 |
| E. RHY Evie 62C #276367 x Antonius #34899                       | 4 |
| F. Fabel 93E #338197 x Stromer #128187                          | 3 |

All the above product is stored at Alta Genetics Inc., Rocky View County, AB. When the embryos were transferred to Alta Genetics the integrity of the tank was checked and met or exceeded standards.

Tim Havener

3 Canadian qualified embryos

19.

### Brock Miss Catalina embryos

Virginia Radison 5Z



Resulting Pedigree

- |                                    |                        |
|------------------------------------|------------------------|
| CROSSROAD RADIUM 789U              | MF MR. EVAN 14P        |
| <b>VIRGINIA RADISON 5Z 773557</b>  | CROSSROAD PANDITA 308P |
| SS LEGACY 5U FF                    | SMITHBILT MOLSON 21M   |
|                                    | RICOCHET PARIS 419P    |
| MFL MEISTER 36Y                    | MAGNUM 4               |
| <b>BROCK MISS CATALINA T575339</b> | MFL UTICA 87U          |
| ANCHOR "T" HELGA 10Y               | WESTDRUMS ANDREW       |
|                                    | ANCHOR "T" FRIEDA 2T   |

BRK Catalina was one of the cows that I purchased from Brock Ranches. This spring she will be 15 years old. She still has great feet, a fantastic udder and keeps her condition all year long. She is a direct daughter of Anchor "T" Helga 10Y, and, to my knowledge, is the last direct daughter still alive. Catalina is a maternal half sister to Anchor "T" Impact, Anchor "T" Legend and Anchor "T" Ikon. We flushed her to the \$26,000 Virginia Radison 5Z. He has great calving ease, is very stylish and throws dark red, vigorous calves with performance. I had purchased a Double Bar D Thunder daughter from Virginia Ranch at the 2014 Western Harvest sale last fall who had a Radison heifer calf. This calf is one of my best replacement open females in the pen. I was wanting to flush Catalina to something special and after touring Harry & Michelle's herd and seeing the consistency of the Radison calves, I knew exactly which sire I wanted to flush with! Harry was kind enough to sell me some semen so I could do just that. Radison suffered a career ending injury after fighting with another bull, so these will be the only embryos of this mating we will have to offer.

Skywest Simmentals

Stored at Sundown Livestock Transplants Ltd., Cremona, AB.



30 doses Exportable semen, sold in 3 packages of 10 straws

**21.**

**JB CDN WIND WALKER 1102**

FULLBLOOD MALE  
785989

JB 2Y

15 January 2011

SALAMON  
MFI WHISTLER 47L T581509  
MFL ZAILA 8Z

KLYBER  
JB CDN ERIKA 5024 650210  
DFM 595E

SALUS  
MINKA  
SOLWAY ADONIS  
MFL PETRA 95P  
MON-BIJOU MAGNUM  
WISP-WILL RONA  
SIR BLANCHETTE 6A  
DFM ERIKA 60Z

BW: 96. 205 day: 879. 365 day: 1297.  
EPDs: 1.0 7.5 73.4 102.3 0.3 69.8 33.2



**Wind  
Walker  
progeny**



When we first re-entered the Simmental business back in 2005 our goal was to create a small but high caliber herd of Flecks and Purebreds. We were fortunate enough to acquire Klyber back in the fall of 2005 at the JB Livestock reduction sale, and had his presence at our place for two years. After putting him down in 2007 we struggled for six years to find a replacement for him. A bull that could create those big beefy bull calves that calved easy and then wean at the top of the herd. A bull that could create those broody females that would turn into excellent mothers.....well we found him in August 2013 at the same place that Klyber came from; JB Livestock, and it turns out he was a grandson of KLYBER. After some constant persuasion and admiration over his first calf crop, JB agreed to sell us half interest. I remember the first day I saw Walker, JB's dad, David, told me he was the best bull they had used since KLYBER....that was the icing on the cake. Dave is a very quiet man, but I learned years ago, when he speaks, you listen. After using Walker for three years, JB sold us his half last fall. With all the calves I have seen at JB's and with the ones we had born at our place, I have to say he is the most consistent bull I have seen. Walker and his calves have become world famous thanks to JB's updates on FaceBook, with the demand for his genetics and progeny getting larger and larger. JB has sold a handful of bull calves with great success for their new owners, continues to use two of his sons, and has a group of heifers that would make your mouth water. This will be the only semen to sell until the fall of 2016.

**Parview Stock Farms**



BamBam daughter



BamBam son



FULLBLOOD MALE  
714051

MFI 147U

8 May 2008

30 straws Canadian / U.S. qualified semen, 3 10 dose packages

BHR DOORN G629E  
SHAWACRES JAHARI 50L T559299  
MISS SHAWACRES HEIDI 1H

GREAT GUNS BANDIT 41E  
MFI LOLITA 3107 609568  
ANCHOR "T" SELMA 13F

205 day: 626; 365 day: 957. EPDs: -0.3 6.0 69.4 99.1 4.1 61.4 26.9  
Semen Code 028SM01098. Stored at Bouchard International, Crossfield, AB.

OVERAL BIRNER  
WISP-WILL PETAL  
GREAT GUNS MOSES 50D  
RHY FAYE 13F  
GREAT GUNS FREDERICK 48B  
MISS KNIGHT 155S  
BALU  
ANCHOR "T" EMMY 5B

## 22. MFI BAMBAM

100% Full Fleckvieh. At seven years old BAMBAM is still incredibly impressive to look at and even more impressive is seeing his daughters now producing outstanding calves as well. His females are very moderate framed, have tidy trouble free udders, good feet and are weaning off bull calves at 70+ % of their own weight with no creep feed. BAMBAM has proven to produce both remarkable and marketable bulls and females. With this annual opportunity to purchase semen buy with confidence.

JNR Farms/Ole Farms

## 23.

## FGAF MAGNUM 901Z

FULLBLOOD MALE  
762095 FGAF 901Z  
5 January 2012

30 straws Canadian/U.S. qualified semen

FGAF Magnum - summer 2012



Francis Gagnon

BBBG WRANGLER 3S  
ALLM COLOSSAL 25U 693891  
FGAF ADRIA 126P

CHAMPS ROMANO  
VIRGINIAS UPTOWNGAL 710969  
VIRGINIA'S MS PEBBLES

BW: 101; 205 day: 795; 365 day: 1275 EPDs: -2.1 6.6 73.4 102.4 -6.6 68.6 32.0  
Stored at Alta Genetics Inc, Rocky View County, AB.

PRL HOUSTON 005H  
IPU 4G FRANCESCA 98N  
SHAWACRES JAHARI 50L  
FGAF LEGEN'S CHARM 743K  
SMITHBILT MOLSON 21M  
CHAMPS PRICILLA  
IPU BRONSON 19K  
WILLOWS JADE 91J

A fantastic opportunity to get progeny from one of the most talked about Fleckvieh bulls in recent history. His calves have truly impressed us and visitors with added muscle definition, dark cherry red color, thick hair coats, testicle development and performance. His daughters have us excited with what looks to be great udder structure, dark red hair coats and above average performance. He himself has matured into a moderate powerhouse with tremendous foot structure and is the easiest fleshing bull in our sire battery. Semen sales have been limited and so far the only way to access his genetics are from us or Cherry Creek so this is a great chance to get in on genetics that are still relatively exclusive.

Beechiner Bros. Simmentals

20 straws Canadian & U.S. qualified semen

**24.**

**DOUBLE BAR D  
SPITFIRE 20X**

POLLED FULLBLOOD MALE  
P737196  
RLD 20X  
24 January 2010



DOUBLE BAR D EVEREST 4R  
**DOUBLE BAR D EVEREST 103U P702213**  
DOUBLE BAR D JERICO 5L

VIRGINIAS RED MARCIANO FF  
**VIRGINIA MS TREASURE 4T 693440**  
VIRGINIA'S MS WEST PATTY

EMIL  
DOUBLE BAR D LYNN 89M  
GRINALTA'S POLLED REGENT  
GIDSCO JERICO  
IPU BRONSON 19K  
DFM JUNI 960J  
WESTDRUMS ANDREW  
ANCHOR "T" BARBI 46K

After working with Spitfire and seeing more of his daughters in production it was evident that he can produce a great female. His daughters here all have beautiful udders and bring in the big calves in the fall. Spitfire doesn't stop at his daughters, his sons are even more impressive with their huge performance, muscle mass and big nuts. Spitfire is a true herd builder. We are not telling you something you don't already know... his progeny have topped many sales in the past few years. Here is your chance to make your own high seller or herd matron.

**Starwest Farms**

BW: 105. 205 day: 878. 365 day: 1542. EPDs: -0.7 4.8 73.4 113.8 7.2 57.6 21.0  
Stored at Alta Genetics Ltd., Rocky View County, AB.

20 straws Canadian qualified semen

**25.**

**DOUBLE BAR D  
RIVAL 201A**

FULLBLOOD MALE  
T1121186  
RLD 201A  
19 June 2013



ROGANT  
**MRLN ROGAR T331207**  
GOLDL

DOUBLE BAR D LINCOLN  
**DOUBLE BAR D JOCELINE 582621**  
MRLN JOSCELINE

ROGER  
LORIS  
SALAMON  
GOLDL  
PRL PORTERHOUSE REGENT  
BAR NONE FENELLA  
ARNI 8M  
MRLN JOHANNA

When we saw Rival in the Double Bar D catalogue it was sheer excitement. We feel he checks all the boxes from type, colour, pigment, BW, performance, MCE and milk. Then you look at his dam for a cow family Joceline 104M puts a high seller in every sale. Rival's sire, Rogar, is a bull that was under-utilized. Now we are seeing his daughters are some of the best in the industry. Just look at Rival's pedigree - Rogant twice, Romulus three times, Bold, Goldl, Salamon, Arni 8M - All of these bulls are known for making our breed what it is today. Rival will be one more name to add to these greats. This is your opportunity to make history.

**Starwest Farms**

BW: 92. 205 day: 745. 365 day: 1271. EPDs: 4.8 6.2 65.7 94.8 10.5 60.2 27.5  
Stored at Alta Genetics Ltd., Rocky View County, AB.



30 straws Canadian & U.S. Qualified semen

**26.**

## KUNTZ CONGO 34M

FULLBLOOD MALE  
577227  
KNTZ 34M  
27 January 2002



METRO  
ANCHOR "T" METRO 4E T341756  
GISELA

GREAT GUNS MOSES 50D  
RICHMOND MISS MOSES 71J T507376  
J ANCHOR 13D

METIST  
HELLA  
BAFI  
GISELA  
889 BEL C&B WESTERN 2ND  
MISS KNIGHT 155S  
ROGANT  
MRLN GUNDI

Full Fleckvieh. Congo was a very popular People's Choice Champion Bull at 2002 Agribition. His pedigree contains some of the top bulls of the time. His sire, Metro, added calving ease and milk, while his grand sire added power and performance. Congo is a bull that would fit in well today when you analyze his carcass numbers, lean meat yield and marbling. Congo is also a sire with no throwaways. His bull calves are every bit as strong as the heifers. Half of my current herd are Congo daughters or descendants.

**Alliance Simmental Farms**

BW: 104. 205 day: 924. 365 day: 1363. EPDs: 6.5 2.1 73.6 98.5 6.3 76.2 39.5  
Semen Code 28SM0776. Stored at Alta Genetics Inc., Rocky View County, AB.

30 straws Canadian & U.S. Qualified semen

**27.**

## ALLIANCE ON REQUEST

POLLED FULLBLOOD MALE  
PG783616  
ALL 12A  
4 April 2013



DORA LEE ECLIPSE FF9R  
ROSEMEAD ON DEMAND 4X P725737  
SANMAR POL NINA 90N

BHR THREE SIXES SA L666E  
DEK 662S PT660732  
DEK POLLED MOCHA 1M

SMITHBILT MOLSON 21M  
DORA LEE ELEXIS  
EL NINO  
SANMAR KANADIAN 90K  
ERICO PRIMAL  
CONGOSIM SUSI  
BHR DOORN G629E  
BHR MS VENDA DI J006E

This young bull is a breed changer. On Request has extreme body length, an outstanding set of feet and legs and enough power in his head to make those bull prospects. This homo polled, Full Fleckvieh is quality and that is no fluke. His sire, On Demand, was purchased by semen and his dam produced the 2011 North American International Fullblood champion female. The first On Request calves are on the ground and, as I mentioned before, he will be a breed changer. Lots of hair, pigmentation, extreme body length (which is pounds) and everything is polled. If you have to protect him in one area, he needs to be breed to cows with extra shape of rib.

**Alliance Simmental Farms**

BW: 97. 205 day: 835. EPDs: 6.6 3.8 60.2 83.1 6.4 59.2 29.1  
Semen Code 294SM0034. Stored at Bow Valley.

20 doses Canadian qualified semen

# 28. WHEATLAND CURRENT AFFAIR

POLLED PUREBRED MALE  
PG1129672  
LER 494B  
4 March 2014



REMINGTON LOCK N LOAD 54U  
STF ROYAL AFFAIR Z44M BPTG800175  
STF ONYX 451W

TNT TOP GUN R244  
WHEATLAND LADY 736 T PTG683490  
WHEATLAND LADY 902J

REMINGTON ON TARGET 2S  
15 MISS KNIGHT78E-51G  
STF DOMINANCE T171  
GCF MISS CALIENTE  
TNT GUNNER N208  
TNT MISS SADIE M68  
ER RED DECK 639D  
WHEATLAND LADY 702G

BW: 84. 205 day: 933. EPDs: 9.3 1.4 62.0 98.0 9.2 52.1 21.2  
Product is stored on farm.

### Oakview Simmentals

Current Affair is everything we were looking for when we started the search for a new homo polled calving ease herd sire. He is free moving, wide topped, solid made, deep bellied and has a ton of upper and lower rib shape. He is dark red, stout and hairy with strong lines and great testicle development. We admire his smooth shoulder and neck extension coupled with his extra length of body. The pedigree on Current Affair is strong with the guesswork taken out, having two of the breed's influential females Wheatland 902J and STF Onyx behind him. There is proven calving ease and maternal strength in his dam Wheatland 736T, who is also the dam of High Voltage. At only 13 months of age, Current Affair was a powerful 1650 lbs at sale time with 41 cm testicles. He froze over 400 doses on his first jump at 13 months and then went out in our heifer pen and bred like an old bull. We are confident in Current Affair's ability to sire calves that will arrive easy and be impressive as they continue to grow. As we anticipate the arrival of his first calf crop we are excited about the impact he will have in our own herd as well as the industry as a whole.

30 straws Canadian qualified semen

# 29. CMS TRADEMARK 756T

POLLED PUREBRED MALE  
PG676090  
CMS 756T  
6 February 2007



BBS RED CANADIAN L24  
CMS RED POLLED ICON 16P PG620039  
CMS MELODY 03M

ASM MR BAR SAM 212H  
CMS LUBA 23L PG561006  
WSR JESSIE 76J

BOZ REDCOAT  
BBS MISS RED BEAUTY J109  
LCHMN BODYBUILDER 7303F  
YR RED CHERRY 22K  
BBS ZIMA D55  
LFE PRECIOUS GAL 64F  
MFL DARREL 82D  
WSR DAISY

BW: 92; 205 day: 810; 365 day: 1396 EPDs: -0.6 5.0 70.7 98.7 1.0 69.7 24.4  
Semen Code 0268SM01265. Stored at Alta Genetics Inc, Rocky View County, AB.

Homozygous polled. After weaning our first set of Trademark calves we couldn't be more impressed. Kopp Farms often talked about the consistency of this great bull, stating that he never threw any culls. Well they couldn't be more right - all but one calf with an injury made the keeper pen. We couldn't be happier with his bulls and heifers as both stand out in their respective pens. Take a look at his two daughters selling in the Red and Black sale. We think you will like what you see. This will be the only chance to get semen for the 2016 breeding season. This is a great chance to add predictability, longevity and style with the added bonus of exclusivity.

### Stout Brothers Simmentals

10 straws Canadian qualified semen

# 30.

## BAR 5 FF WILLIE 426Y



Full sib Willie daughters selling in Equation.



**FULLBLOOD MALE**  
T745676

CO 426Y

19 March 2011

LEEUPPOORT LASTIG  
LEEUPPOORT WILKO 744539  
LEEUPPOORT BRITTVAN

UITSUIP CHEVA 01  
RAAP N SKRAAP MARDA CA-744570  
RAAP-N-SKRAAP MARKA

LEEUPPOORT REBKE  
LEEUPPOORT LUIZI  
SALERIKA EVAN  
BRITTESS 933  
DE-DAM AREND  
UITSUIP CHEVRON  
KYKSO ALJAKA  
RAAP-N-SKRAAP MARTIE

BW: 105; 205 day: 715; 365 day: 1267. EPDs: 5.4 1.0 44.1 58.2 -1.7 38.5 16.5  
Semen code 028SM01257. Stored at Alta Genetics Inc, Rocky View County, AB.

100% Fleckvieh. We now have three calf crops from Willie with a fourth on the way. He never ceases to amaze us with his progeny continuing to impress with their growth, moderate frame, sound feet and legs with absolutely beautiful udders. Our first group of females to sell publicly are here this weekend at the Fleckvieh Equation. I have to say we are very excited to see these heifers go their respective new homes and Produce! Produce! Produce! We are pleased to have Willie influence in our herd, as well as Marda's. The added bonus is his out-cross bloodline, easy calving and pigment. We are offering 10 straws for sale, so progressive breeders have the chance to capitalize. More info please contact us.

**Keato Meadows Simmentals**

30 straws Canadian qualified semen

# 31.

## BLI RED ADDICTION

### 224Z

**POLLED PUREBRED MALE**  
PG767180  
CLAY 224Z  
2 February 2012



R PLUS REDGE 8018U  
R PLUS 20X PG736558  
MISS R PLUS 6082S

LFE DREAMING RED 503S  
LFE RS MISS ARNOLD 609U PG728232  
MISS ARNOLD L2539

R PLUS BLACKEDGE  
MISS R PLUS 3158N  
KJLI NO MERCY 380P  
MISS R PLUS 920J  
CNS DREAM ON L186  
LFE CHARO 56K  
BOZ REDCAT D162  
MISS ARNOLD G1505

Here is a wonderful Sire. He has it all...homozygous polled, great conformation, solid feet... he has never had a foot trim or any lameness issues. Disposition is very important and his meets the criteria of a puppy dog...and it seems to imprint on all of his offspring. Proven calving ease, used heavy on all of our heifers. If this guy could promote himself with a slogan it would be "Get them out small and grow them up BIG."

**Jayshaw Simmentals**

BW: 90. WNG: 935. EPDs: 8.4 -2.7 43.8 55.9 13.7 46.2 24.4  
Stored at Alta Genetics Ltd., Rocky View County, AB.



10 straws Canadian & U.S. Qualified semen

**32.**

**ALLM COLOSSAL 25U**

FULLBLOOD MALE  
693891

ALLM 25U

8 February 2008

PRL HOUSTON 005H  
BBBG WRANGLER 3S T657207  
IPU 4G FRANCESCA 98N

SHAWACRES JAHARI 50L  
FGAF ADRIA 126P T620625  
FGAF LEGEN'S CHARM 743K

ROGANT  
MS PRL NITE-ANCHOR 109B  
BEL WESTERN UNION 5Z  
DORA LEE FRANCESCA  
BHR DOORN G629E  
MISS SHAWACRES HEIDI 1H  
ANCHOR "T" LEGEND 7H  
RAJ MS BALTIMORE 51G

BW: 103. 205 day: 731. 365 day: 1480. EPDs: -4.3 7.2 76.1 106.0 -1.0 69.4 31.4  
Semen Code SM9955. Stored on farm and at Alta Genetics Ltd., Rocky View County, AB.

**Ferme Gagnon Inc.**



10 straws Canadian & U.S. Qualified semen

**33.**

**ANCHOR "T" LEGEND 7H**

FULLBLOOD MALE  
T415161

ATFR 7H

3 January 1998

METRO  
ANCHOR "T" METRO 4E T341756  
GISELA

WESTDRUMS ANDREW  
ANCHOR "T" HELGA 10Y T194090  
ANCHOR "T" FRIEDA 2T

METIST  
HELLA  
BAFI  
GISELA  
SCOTTISH NEPTUNE  
ROSEL  
SIR ARNOLD 809G  
MISS NEFF LOR-A-LEE

BW: 99. 205 day: 896. 365 day: 1467. EPDs: 13.3 1.8 67.2 91.0 10.7 69.7 36.2  
Semen Code SM9976. Stored on farm and at Alta Genetics Ltd., Rocky View County, AB.

**Ferme Gagnon Inc.**



10 straws Canadian & U.S. Qualified semen

**34.**

**DOUBLE BAR D MAESTRO 100S**

POLLED FULLBLOOD MALE  
PT665118

RLD 100S

11 February 2006

GRINALTA'S GRIDIRON 403J  
DOUBLE BAR D MAKE M PLED P588034  
GRINALTA'S CLASS ACT 11K

DOUBLE BAR D LINCOLN  
DOUBLE BAR D JOCELINE 582621  
MRLN JOSCELINE

PRL PORTERHOUSE REGENT  
GRINALTA'S POLLED FLECK  
GRINALTA'S EXTRAORDINAIRE  
GINALTA'S POLLED FREDA  
PRL PORTERHOUSE REGENT  
BAR NONE FENELLA  
ARNI 8M  
MRLN JOHANNA

BW: 102. 205 day: 883. 365 day: 1371. EPDs: 4.0 4.5 68.1 89.8 10.2 65.9 31.9  
Semen Code SM947. Stored on farm and at Alta Genetics Ltd., Rocky View County, AB.

**Ferme Gagnon Inc.**



10 straws Canadian & U.S. Qualified semen

**35.**

**DOUBLE BAR D BUSTER 801L**

FULLBLOOD MALE  
T561903

RLD 801L

10 January 2001

MON-BIJOU MAGNUM  
ELDANDI 907H -T417512  
WISP-WILL PEGGY 5TH

GOLD  
MRLN BARBL -T370737  
MRLN BETTINA

MON-BIJOU SIDAAR  
MON-BIJOU PRULAPI 84  
CONGOSIM HAMAN 82  
WISP-WILL PENNY 3RD 85  
GALLUS  
BRISE  
OVERHALL HIVY  
KCC PERFECTION

BW: 105; 205 day: 720; 365 day: 1409. EPDs: -3.0 4.8 57.9 90.0 11.0 58.0 29.2  
Semen Code SM9964. Stored on farm and at Alta Genetics Ltd., Rocky View County, AB.

**Ferme Gagnon Inc.**

10 straws Canadian & U.S. Qualified semen

# 36.

## BAR 5 SA HERO 823M

FULLBLOOD MALE

T598603

CO 823M

12 September 2002

KYKSO HADAU  
KYKSO HAPED 543642  
KYKSO PEDODI

KYKSO ALEN  
RU-DEV PEPPY 577272  
RU-DEV PRUNEL

HAGEN  
KYKSO DAUNE 78  
DIOR  
KYKSO PEMDOBI 81  
KYKSO ALJAKA  
KYKSO ENBAU  
WISP-WILL MANDRAKE 4TH  
WISP-WILL PENNY 3RD 85

BW: 95. 205 day: 831. 365 day: 1223.

EPDs: 8.6 7.1 68.9 94.3 -4.1 62.9 28.6

Semen Code SM791. Stored on farm and at Alta Genetics Ltd., Rocky View County, AB.

**Ferme Gagnon Inc.**



30 straws Canadian / U.S. qualified semen, selling 3 10 dose packages

# 37. ANCHOR "T" IMPACT 2H

FULLBLOOD

T415160

ATFR 2H

1 January 1998

METRO  
ANCHOR "T" METRO 4E T341756  
GISELA

WESTDRUMS ANDREW  
ANCHOR "T" HELGA 10Y T194090  
ANCHOR "T" FRIEDA 2T

METIST  
HELLA  
BAFI  
GISELA  
SCOTTISH NEPTUNE  
ROSEL  
SIR ARNOLD 809G  
MISS NEFF LOR-A-LEE

BW: 96; 205 day: 902; 365 day: 1387.

New EPDs: 5.5 6.2 67.0 92.0 6.1 68.6 35.1

Semen Code 114SM0547. Stored at Alta Genetics Inc, Rocky View County, AB.

Full Fleckvieh. Eagle-Ridge Simmentals purchased Anchor "T" Impact at the

Anchor "T" dispersal sale. He has proven himself many times over. He has

been used with confidence on both heifers and cows. Over the years Impact

has sired many high selling male and female progeny. The females out of Impact are exceptional mother cows. All Impact progeny have proven to be consistently solid colored, well

put together, highly muscled, sound footed animals with docile temperaments. Please contact any of the Eagle-Ridge team with any questions about Anchor "T" Impact or his progeny.

Use him with confidence. You won't be disappointed.



**Eagle-Ridge Simmentals**

30 straws Canadian qualified semen

# 38.

## ANCHOR "T" SUPREME 39H

FULLBLOOD MALE

415168

ATFR 39H

24 January 1998

SIR ARNOLD 809G  
BEL SIR ARNOLD 2ND 100359  
MONICA 48D

KNIGHT MR T 255T  
ANCHOR "T" EDEL 45B T260157  
NDM FRIEDA 7S

SIEGFRIED  
ABR SHINAGH VIOLET  
HADRIAN  
SOFIA  
DUKE 223P  
MISS KNIGHT 108N  
ARNI 8M  
NDM FRENDI 4N

BW: 94. 205 day: 797. 365 day: 1340.

EPDs: 4.7 1.7 49.9 67.2 11.5 54.5 29.6

Stored at Alta Genetics Inc, Rocky View County, AB.



**Saugen Acres**

30 straws Canadian / U.S. qualified semen

# 39.

## CHAMPS ROMANO

FULLBLOOD  
667742

CHMP 98S

2 January 2006

GIDSCO APPOLLO 3F  
SMITHBILT MOLSON 21M 581559  
JERICO'S DEIRDRE 21D

SHAWACRES JAHARI 50L  
CHAMPS PRICILLA 637844  
RU-BENS LIZ 96L

ANTONIUS  
MFL BRENDA 65B  
DEMBY MR IMAGE 853B  
JERICO'S BEAUTY 122B  
BHR DOORN G629E  
MISS SHAWACRES HEIDI 1H  
KLONDIKE GOLD RUSH 418B  
KLONDIKE STAR 53D

BW: 74; 205 day: 787; 365 day: 1525.

EPDs: 6.2 4.3 77.3 113.1 -0.8 69.2 30.5

Semen Code 28SM1080. Stored at Alta Genetics Inc, Rocky View County, AB.

Romano will soon be 10 years old, and is still going strong. Progeny from this great bull are still averaging over \$8000; which is an average through the lean years too in the cattle business. We believe he will be known as one of the most consistent Full Fleckvieh herdsires in the industry. If you have the chance to stop in and view him, you will be astounded, as he walks like a cat and has perfect feet – which have never been touched! Again Virginia Ranch is offering 30 straws of Romano. It's never too late to jump into a good thing – bid with confidence.



Virginia Ranch

30 straws Canadian qualified semen

# 40.

## JACK PINE ANDY 11Z

FULLBLOOD  
228242

JWU 11Z

7 March 1990

EGMAR  
ANTONIUS 34899  
ANKA

SH ROMULUS F53R  
GREAT GUNS MITZI 11X T173622  
GREAT GUNS MARI-ANN

EGON  
ELRIKE  
SATIN  
AMSEL  
SIEGFRIED  
MILLHILL FLOWER  
BEL C&B WESTERN 2ND  
CELTIC MARIA

BW: 90; 205 day: 762; 365 day: 1257. EPDs: 15.0 -0.5 43.9 58.5 8.7 54.8 33.0

Semen Code 28SM976. Stored at Alta Genetics Inc, Rockyview County, AB.

When you talk calving ease, Andy's your boy. He's in the top 2% for calving ease and will leave you excellent replacement females. With very limited semen left, here's your chance to buy proven bloodlines.

Wolfe's Fleckvieh



Great Guns Mitzi 11X



30 straws Canadian / U.S.  
qualified semen  
3 packages of 10

# 41. SOUTH SEVEN TOPNOTCH 29T

FULLBLOOD MALE 680634 STU 29T

22 January 2007

DOUBLE BAR D BUSTER 801L  
SOUTH SEVEN RAZZMATAZZ 7R 639435  
SOUTH SEVEN FLECK 16F

ELDORADO  
SOUTH SEVEN KELTIE 2K 533303  
RICOCHET GLORY 75G

ELDANDI 907H  
MRLN BARBL  
ROGANT  
M-RIDGE BRIANA 064B  
ELCH  
MUSTER  
ZAMUTO  
DFM CRYSTAL 319C

BW: 108; 205 day: 764; 365 day: 1382. EPDs: -4.8 7.7 68.6 90.4 -10.3 62.2 27.9

Semen Code 028SM01096. Stored at Alta Genetics Inc, Rocky View County, AB.

South Seven Farms/Blue Spruce Simmentals

# 42.

Product	CSA Reg #	Semen Code	Doses
A. Dora Lee Native Son	511912	28SM755	2
B. Bold Leader	109664	7SM29	3
C. CET Extra Best 87K	24435	28SM205	8
D. Anchor "T" Paragon 1X	172284	71SM81	3
E. Bold	795	89SM1	3
F. Bar 5 Prestige 681T	120034	18SM401	6
G. Tyron Mainframe	381838	114SM414	5
H. Great Guns Karl 17C	275546	28SM592	6

All the above product is Canadian Qualified. Stored on farm.

Whiskey River Stock Farm



3 – 10 dose pacs

**43.**

**SHAWACRES JAHARI 50L**

**FULLBLOOD MALE**  
T559299

JXJ 50L

3 March 2001

OVERAL BIRNER  
**BHR DOORN G629E -T397427**  
WISP-WILL PETAL

KYKSO BANO  
OVERAL SELLY  
WISP-WILL MANDRAKE 4TH  
RU-DEV PAM  
BEL C&B WESTERN 2ND  
MISS KNIGHT 155S  
HASALZ  
RHY BORONIA 61B

GREAT GUNS MOSES 50D  
**MISS SHAWACRES HEIDI 1H -T406027**  
RHY FAYE 13F

BW: 98; 205 day: 865; 365 day: 1321. EPDs: -0.7 7.2 75.5 109.5 4.4 61.2 23.6  
Semen code: 114SM578. Stored at Alta Genetics.

**Shawacres**

**44.**

Product	CSA Reg #	Semen Code	Doses
A. Rogant	262974	500SM9788	10
B. BHR Doorn G629E	397427	154SM0207	10
C. Hodler	263036	500SM4987	10
D. Hasalz	314698	500SM2487	10
E. Eisenherz	397318	999SM106	5
F. Eisenherz	397318	500SM7623	5
G. Hetal	262977	500SM9758	10
H. Horch	285026	500SM1036	10
I. Bold Leader	109664	21SM270	6
J. Laki	263107	500SM876	10
K. Haxent	263035	999SM100	10
L. Bar 5 Bernheim 405H	415498	11SM2012	2
M. Mr PRL Houdini 191H	502038	114SM0545	10
N. Bar 5 SA Benz 415L	559543	70SM9969	4
O. Bar 5 SA Pioneer 439L	559370	70SM9967	9
P. Bar 5 Kalgery 402J	518689	114SM463	5
Q. Bar 5 Vuurslag 420K	538579	114SM506	2
R. Bar 5 SA Harrach 801P	632980	114SM663	10
S. Rooinik	500417	28SM0704	10
T. Hooks Red Quorum 55H	528539	1SM50	10
U. ER Red Dash 649D	390665	14SM3004	5
V. CMS Red Polled Icon 16P	620039	28SM0813	8
W. GWS Ebony Trademark 6N	671309	01SM0091	6
X. SRS Franchise F601	500951	01SM0456	9
Y. ER Red Deck 639D	372505	157SM734	5
Z. Circle S Leachman 600U	376439	24SM0288	10
AA. KencoMF Powerline 204L	584683	1SM061	7
AB. Leachman Bodybuilder 7303F	502869	1SM0066	20
AC. STF Starquest N114	616507	1SM080	6

All the above product is Canadian Qualified and is stored at Alta Genetics Inc., Rocky View County, AB.

**Shawacres**



3 straws Canadian qualified semen

**45. WHEATLAND RED TEDDY 457P**

**POLLED PUREBRED MALE**  
PTG622881

LER 457P

22 February 2004

NICHOLS BLK DESTINY D12  
**WHEATLAND BULL 131L BPG580821**  
WHEATLAND LADY 908J

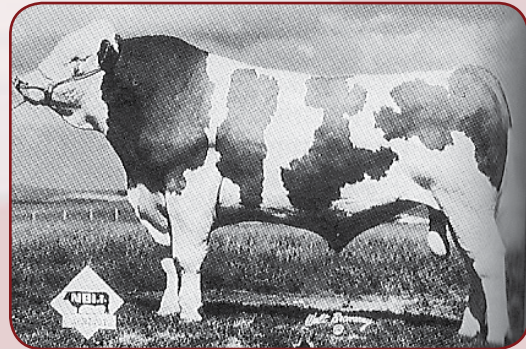
CIRCLE S LEACHMAN 600U  
NICHOLS KELLY 75U  
BBS ZIMA D55  
WHEATLAND LADY 705G  
KS BLACK CLOUD A27  
ER MISS MAX 57Y  
ER BIG SKY 545B  
MISS WHEATLAND 519E

ER RED DECK 639D  
**WHEATLAND LADY 902J PG542693**  
WHEATLAND LADY 702G

BW: 82. 205 day: 855. EPDs: 7.5 0.6 53.8 77.3 12.9 40.4 13.6  
Semen code 28SM0844. Stored at EastGen.

Red Teddy is known across the breed as a predictable sire for supplying muscle, eye appeal and structural soundness. Red Teddy is very reliable as a calving ease sire as well. You cannot go wrong with these traditional Wheatland genetics. When has a Wheatland sire produced a poor one?

**Bogart Cattle Co.**



2 doses Canadian qualified semen

**46. KINGFIELD ABRICOT**

**FULLBLOOD MALE**  
441

NEX 7C

28 January 1971

WENNER  
**VIKTOR FR 16927**  
ALPINA

TONI  
LENE  
EIGER  
LERCH  
JANUS  
KRONE  
URS  
DOLENTE

ISIDORE  
**REJANE FR 100008**  
HELVETIE

EPDs: 0.7 4.7 52.4 65.6 3.5 57.4 31.3  
Semen code 28SM0844. Stored at EastGen.

Abricot is an old style Simmental bull that has produced many champions in his day. He produces daughters with milk and style with tidy udders. Look for lots of interesting colour patterns on his calves! Use this bull to make top quality mamma cows!

**Bogart Cattle Co.**

# 47.

Product	CSA Reg #	Semen Code	Doses
A. Sleepy Hollow Prime Time	333205		5
B. DFM Marcus 14M	S580437		2
C. Dayton's Pol Neumann	P602166		4
D. Exodus	P619930		4
E. MCC Nolan 50K	531600		5
F. Pasta	294826		2
G. FGAF Boss 26N	595878		10
H. Crossroad Tuxedo 222T	P678330		10
I. Anchor "T" Rusty 59G	394922		2
J. Richmond Mr Shareholder 43E	324755		5
K. FFFS Hamilton	649754		10

## Langer Fleckvieh Simmentals

# 48.

Product	CSA Reg #	Semen Code	Doses
A. FU Halling	534164	00SM7582	9 (Minis)
B. FU Halling	534164	00SM7582	10
C. FV Laki	263107	00SM9961	27
D. Camus Frontier	526894	00SM9972	30 Cdn
E. Klondike Gold Rush 418B	262748	114SM0228	16
F. JB Doctor Duke 442D	312937	114SM0286	5
G. BEL Western Union 5Z	231726	28SM0519	46
H. RHY Red Patron 77E	338177	29SM0330	15 Cdn
I. RHY Red Patron 77E	338177	29SM0330	45
J. Balu	263648	500SM3285	19
K. Rogant	262974	500SM9798	30
L. Riverbend 12B	267809	70SM9980	10 Cdn
M. Klondike Arnie 250Z	216954	75SM0052	4
N. Arnold's Zamutwo D9	323396	75SM0111	4
O. Baltimore	264715	999SM0101	19 Cdn
P. Hockenhill Magnum	113577	99SM7358	3

All the above product is stored at Alta Genetics Inc., Rocky View County, AB.

## Tim Havener

# 49.

Product	CSA Reg #	Doses
CNS Dream On L186	BPTG632589	5

Product is Canadian Qualified. Stored on farm.

## JT Livestock