

16th Annual

WLB LIVESTOCK



BEEF BULL SALE

*Black & Red Simmental Beef Bulls
Purebred & Percentage*

TUESDAY, MARCH 24, 2020 :: 2:00 PM CDT :: AT THE FARM :: DOUGLAS, MANITOBA

BILL & NANCY BIGLIENI :: 204-763-4697 :: 204-729-7925

WLB LIVESTOCK BEEF BULL SALE REPORT

SALE GROSS \$284,650.00
43 BULLS AVERAGED \$6,620.00

23 BLK PUREBREDS AVERAGED \$4,843.00
20 PUREBREDS AVERAGED \$8,663.00

HIGH SELLERS

LOT 43 (PUREBRED)	\$52,500.00	LABATTE SIMMENTALS/OBERLE BROS/CANADIAN SIRES, GLADMAR, SK
LOT 53 (PUREBRED)	\$14,000.00	LANDEN POYSER, ROBLIN, MB
LOT 49 (PUREBRED)	\$ 8,750.00	COREY DESROCHERS, MARIAPOLIS, MB
LOT 39 (PUREBRED)	\$ 8,500.00	MILLER RANCHES, OKOTOKS, AB
LOT 48 (PUREBRED)	\$ 8,500.00	FERME GAGNON INC, CHENNEVILLE, PQ
LOT 47 (PUREBRED)	\$ 8,250.00	SOUTHAM SIMMENTALS, ELM CREEK ,MB
LOT 15 (BLK PUREBRED)	\$ 8,000.00	SCHWEITZER/McCOLL SIMMENTALS, DECKER, MB
LOT 36 (PUREBRED)	\$ 8,000.00	SUNTEK LIVESTOCK, FOXWARREN, MB

VOLUME BUYERS

4 LOTS	\$20,650.00	LES JACK, ROCANVILLE, SK
4 LOTS	\$19,000.00	EAST POINT CATTLE CORP, MELVILLE, SK

TRANSCON ON ORDER

LOT 39	\$8,500.00	MILLER RANCHES, OKOTOKS, AB MAXWELL SIMMENTAL, VIKING, AB
LOT 18	\$5,000.00	WILD WEST FARMS, ROCKY MOUNTAIN HOUSE, AB
LOT 52	\$4,750.00	ROBERT ELLIOTT, CARBERRY, MB

3 LOTS TOTTALLING \$18,250.00



WELCOME FROM WLB LIVESTOCK

Nancy and I want to thank all who have supported us over the years with your purchases as well as your interest in our program. This industry is made up of lots of good people and we are privileged to have met some of you in our forty years in the seed stock business. The bulls you will see in this catalogue didn't just happen at birth. They represent not only our selecting of genetics but also the stacking of genetics that has been done by the people whom we buy our herd bulls from. This will be our 16th bull sale. We put great effort in producing the type of bulls that the cow/calf producer tell us they need. We can only assume that our repeat buyers are proof we're listening.

We think you will find some pretty good beef bulls in this offering. You cow/calf producers looking to add more consistency to your calf crop will want to look at our groups of 1/2, 3/4, and full brothers. Blockbuster, Utah, and Game On have certainly played a part in raising the caliber of red bulls we have to offer. In the black bulls we're confident Stoughton's powerful influence won't go unnoticed. They're thick, hairy, and powerful. If length is high on your priority list then the Rig sons will be a good fit. They have the pounds. There are many selection traits for us all to consider. Calving Ease is always on our mind and we are pleased to offer more bulls with above breed average calving ease than ever before. Many of these also come with pretty good performance attached as well.

As was said in our opening statement there are a lot of good people in this business. Nancy and I have been lucky to have some of them helping us through the years. Wilf Davis and Daryl Snider would be at the top of that list. These two have been a significant part of WLB events for a number of years. Just like us many of our customers have grown to appreciate these two cattlemen and their industry knowledge. We are pleased that Wilf and Daryl will again be available to assist our customers. Along with Daryl representing Bohrson Marketing we welcome Martin Bohrson. Also new this year, we look forward to working with the Transcon crew, Jay, Glen, Darren, and Cody. They will be managing our sale this year. You are invited to give any of these cowboys a call as they have seen a lot of bulls this spring and have walked through our pens more than once and they know our bulls pretty well. They all will be happy to hear from you and talk to you about getting you the best bull your money can buy.

If our years in the cattle industry have taught us anything it is that when you think you have it all figured out you are about to learn one more lesson. It wasn't a normal harvest season last fall and it has left a lot of work for us all to get done this spring. We have extended the free room and board by two weeks from May 1 to May 15. We hope this will help give our customers a bit more flexibility.

We're definitely students for life in the cattle business. And a great business it is. We hope you will bless us with your presence on March 24. Don't hesitate to call us if you have any questions about the bulls.

Sincerely,

Bill & Nancy



Bill & Nancy



Travis, Lindsay, Austin & Owen



Anthony, SarahJayne & Collins

WELCOME FROM TRANSCON LIVESTOCK

WLB Livestock... Bill and Nancy Biglieni need no introduction to the beef industry. For those of you who know the WLB tattoo know that the genetic makings are not a fluke. These folks are true cattlemen and put a lot of time and effort into sourcing the highest quality of both maternal and paternal herdsires that best suit and fit their program. Then taking and mating them to the herd of powerful momma cows, end result is a powerful set of bulls like the ones on offer here in the 16th annual WLB Bull Sale.

A set of bulls that I believe are right for the times. Both commercial and purebred breeders can sit in and buy with confidence. The offering has a great cross section of Power type and Calving Ease bulls. Bulls that are big topped, big quartered, big middled, super hairy and have softness of side and extra rib shape. Bulls that are big footed and structurally sound. The WLB program has never been one to chase fads of extreme cattle or the lower fame size. They have remained somewhat right down the middle and strive to produce functional easy doing cattle that will go out and work in the most diverse conditions.

I encourage you to stop by the farm prior to the sale and tour the bull pen with Bill. Hopefully you will see the consistency of the individual sire groups and the job each sire has done. I know we were very impressed when we toured the bull pen in mid January and again in mid February. I believe there is a bull here that will fit into anyone's program and budget. Bill's WIT and WISDOM and overall knowledge of the beef business attributes to the high rate of return buyers and customer satisfaction that is second to none.

It is a pleasure for the team at Transcon Livestock and we are proud to represent people of this character and knowledge of the cattle industry. If you have any inquiries or questions about the bulls, give us at Transcon or WLB a call and we will do our best to assist you.

On behalf of the Biglieni's and us at Transcon we invite you to join us and look forward to visiting with you on Tuesday March 24th at the WLB Sale Barn on the ranch near Douglas Manitoba. In the event you are unable to attend the sale but would like to purchase, you can take advantage of our industry leading, highly trusted and totally confidential order buying service. Give us a call our phones are always on....

*Darren Pagent
Transcon Livestock Corp.*

WELCOME FROM BOHRSON MARKETING SERVICES

On behalf of the Bohrson Marketing Team, I would like to welcome you to the 2020 WLB Bull Sale. Bill and Nancy have been breeding Simmental bulls for years and have the recipe on how to make true herd bulls. Their strong program has annually produced breed leading bulls that have enhanced the programs that invest in these reliable genetics.

If you are in need of the next elite red or red baldy bull you may want to have a look at the line up here. Bill has been in the works to make an all around herd sire with EPDs, structure and most importantly - cow families. It also shows in the black pen when I saw them in the fall at their very successful female sale, they were on their way then. The quality and consistency in the black group was exceptional and complimented the deep set of bulls. Many of these strong genetics are also outcross to the mainstream Simmental genetics but still have the power, and strength to boost your program forward.

Matt Criddle who works with us was through the pens a few weeks ago and had great reviews and praised the set of bulls with multiple high caliber herd bull prospects and the depth was impressive. If you are unable to attend this great sale and would like some help with your selection, let us know at Bohrson Marketing to assist and we will do so in a professional manner.

We have been working with Bill and Nancy closely for several years and have been through their cow herd a number of times. Bill has always said behind every great bull is a great momma cow! With that being said, let us help you with your next herdsire as we are confident the quality is in Douglas, Manitoba at WLB Livestock!

*Darryl Snider
Bohrson Marketing Services*

SALE DAY INFORMATION

2PM CDT :: TUESDAY, MARCH 24, 2020 :: AT THE FARM :: DOUGLAS, MANITOBA

Directions:

From Douglas: 6 miles north on Douglas road(98W), 1 mile east on 67N, ½ north on 97W.

From Brookdale: 4 miles west on PTH 353, 4 miles south on Derry Rd(96W), 1 mile west on 67N, ½ north on 97W.

From #10 Hwy & PTH 353: 11 miles east on 353, 4 miles south on Douglas Rd(98W), 1 mile east on 67N, ½ north on 97W.

Sale Day Phone Numbers

Bill Biglieni - 204 729 7925

Wilf Davis - 204 841 0211

Daryl Snider - Bohrson Marketing -780 385 5561

Martin Bohrson - Bohrson Marketing – 306 220 7901

Jay Good - Transcon Livestock – 403 556 5563

Glen Norton - Transcon Livestock – 780 542 0634

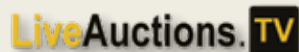
Darren Pagent - Transcon Livestock – 403 323 3985

Cody Haney - Transcon Livestock – 403 559 8809

Ryan Dorran - Auctioneer – 403 507 6483

Craig Flewelling - ring service – 403 556 0515

Jessy Milne Smith - LiveAuctions .tv – 613 229 1073



Important information

Accommodations: Best Western-204 727 7997

Lakeview Inn and Suites- 204 728 1880

Buyers Risk: All bulls become the responsibility of the buyer once the sale is over. We strongly encourage you to protect your investment by insuring your purchases.

Livestock Insurance will be available through Keystone Livestock Service. A representative will be in attendance.

Delivery: Option A: We will deliver your bull after the sale at our convenience to central points in MB, SK, & AB. Trucking to Eastern Canada will be provided by Knills at cost to the buyer.

Delivery: Option B: Your bull is welcome to remain at WLB free of charge till May 15, 2020 to be picked up on or before May 15, 2020. After which time a charge of \$5/day will be in effect until pick up. **WLB will not be responsible for any injuries or loss.** Bulls staying at WLB must be insured. Please let the clerk know of your intentions at time of settlement. US customers see US information on this page.

Semen interest: We reserve the right to collect semen for in herd use on any of the bulls listed in this catalogue. If we choose to collect one of these bulls it will be done at a time that will not interfere with your breeding program.

Certificate of Registrations: Buyers will receive a properly transferred certificate of registration for their purchase.

Semen Testing: All bulls will have been semen evaluated by an accredited veterinarian. A few bulls may be declared decision deferred at the time of evaluation and will need retesting. *If you have cows to breed in the near future, do not buy a decision deferred bull.* Retesting will be done at an appropriate time as decided by our veterinarian.

Colour and Poll Test: Any test regarding polledness and colour were done through the CSA and are recorded on their online pedigree. Please note not all bulls were DNA tested.

Breeding Guarantee: All bulls sell carrying the standard breeding guarantee specified by the CSA. In the event a settlement is necessary a refund of the purchase price will be made(minus any salvage value from the bull in question). All claims must be accompanied with a veterinarian certificate and received within six months of this sale. After that time any necessary settlement will be given as credit. At no time shall the seller's liability exceed the purchase price of the animal.

Vaccinations: All bulls are on an approved vaccination program using Pyramid FP5+Prespense SQ and Tasvac 8.

Announcements: All announcements from the auction block will take precedence over the printed matter in this catalogue. Buyers are urged to stay attentive for such announcements during the sale.

Accidents: While we are very pleased that you have chosen to come to our sale, you are reminded that you do so at your own risk.

Call In Bids: We hope you can participate in person at this sale but if you can't and you would prefer to have someone bid for you, give one of our qualified sales staff a call. You can discuss the bulls with them and make arrangements for them to act on your behalf.

2nd Bull Discount: A 5% discount will be given to buyers purchasing two or more bulls. Discounts will apply to the lesser priced bull and only to those bulls selling for \$4,000 or more.

Information for our U.S. buyers:

Exchange rate: The US/Canadian exchange rate will be announced prior to the sale.

U.S. delivery:

Option A: Cost \$250/bull. We will health test and deliver your bull to the US/Canada border. U.S. buyers will then take their bull through U.S. customs. No broker will be necessary as long as the actual buyer accompanies their bull through U.S. customs. United States Customs, Dunseith, ND - 701 263 4513

Option B: Cost \$600US/bull. We will deliver your bull/s within 200 miles of Dunseith, North Dakota. The above rates are based upon the assumption that all U.S. bound bulls will cross the border in one shipment and are due at time of settlement. All accounts must be settled before delivery will be made. U.S. bulls remaining at WLB due to late payment will be charged for any additional export cost and examinations by the veterinarian.

Videos

WLB bull videos can be viewed online at

- wblivestock.com
- transconlivestock.com
- liveauctions.tv
- buyagro.com

Videos will also be embedded in the ISSU flip catalogue.



lot 1

WLB Bull 18D 493G

Homo Polled :: Hetro Black :: 1288276 :: WLB 493G :: February 13, 2019
 bw-100 :: adj ww-900 :: adj yw-1610

SIRE NCB COBRA 47Y
 SFM STOUGHTON 18D
 SFM BS 119B

DAM MRL EL TIGRE 52Z
 WLB 52Z TARA 3612D
 JFRS MS 43Y

CE	BW	WW	YW	MCE	MWW	MILK	CW	REA	FAT	MARB	API	TI
4.7	4.3	83.2	122.6	2	63.4	21.8	38.7	1.01	-0.123	-0.17	120.32	70.61

A pretty good story can be written on the 43Y cow family. She has given us some good ones. Most recently, our \$16,000 lead off female in our 2019 Top Cut Female Sale going to Quinn Wilson. A son, WLB Blaze On 361E led off our 2018 bull sale going to Ferme Gagnon for \$20,000. Two Blaze On sons sell in this sale (see lots 15 & 16). Another blaze faced son of 43Y, WLB Eldorado 3615C, went to Semex in 2016. You will find five 43Y daughters in production at WLB. Sons of three of these sell as lots 1, 2, & 3.

Time will tell if lot 1 is the best bull to ever lead off a WLB bull sale. That's saying quite a lot when you consider that he is being compared to other lead off WLB sale bulls like WLB Encore, WLB Big Northern, WLB Go Daddy, WLB Obsidian Black, WLB Roughneck, and WLB Blaze On. We're confident 493G will have plenty of friends. If not for his "best in the pen" presentation then for his combination of performance, maternal power and the fact he explodes with muscle and expresses it very well.

Sitting up high and looking down his long wide back every morning when doing the tractor chores you begin to realize just how much of a bull comes with Lot 1 and why he can pound down the scales like he does.

We've watched 493G's development and his approach to maturity and have come to appreciate what he stands for as well as what he brings to the table when thinking about of bull we want to breed our cows to. We know his genetics as well as anyone so you can bet the farm that he will be in our breeding plans this spring. *WLB reserves the right to collect 100 units of semen for our in herd use.*



WLB 52Z Tara 3612D
 Dam of Lot 1



WLB 323B Rita 361F
 Maternal Sister To Dams of Lots 1, 2 & 3
 High Seller in the WLB Top Cut Female Sale
 To Wilson Stock Farm



WLB 18D Sofie 493F
 Sister to Lot 1
 Sold in WLB Top Cut Female Sale
 To Southam Simmentals



WLB 359A Shea 361C
 Maternal Sister To Dam of Lots 1, 2 & 3

- Maximum quarter, maximum stifle and maximum rib on a moderate frame.
- Same pedigree as lot 1 & 3.
- Soft look with unmatched muscle expression.
- Four sisters to his dam in WLB cowherd. Awesome Udders!!!
- Good performance numbers. Top 20%
- API and TI in the top 30%
- *WLB retains the right to collect 100 units of semen for in herd use.*



WLB 52Z Tara 3612C

Dam of Lot 2 & Flush Sister To Dams of Lot 1 & 3



\$5,500.00

lot 2

WLB Bull 18D 489G

Homo Polled :: Homo Black :: 1288271 :: WLB 489G :: February 12, 2019
 bw-94 :: adj ww-830 :: adj yw-1425

CE	BW	WW	YW	MCE	MWW	MILK	CW	REA	FAT	MARB	API	TI
5.6	3.1	77.3	114	1.7	60	21.3	36.6	0.98	-0.123	-0.17	121.53	68.63

SIRE NCB COBRA 47Y
 SFM STOUGHTON 18D
 SFM BS 119B

DAM MRL EL TIGRE 52Z
 WLB 52Z TARA 3612C
 JFRS MS 43Y

- Similar in his design as his blood brothers, lots 1 & 2.
- Hairy, deep ribbed, wide based, up headed.
- Very attractive in his presentation.
- Youngest bull in the sale.
- Four maternal sisters to his blaze faced dam at WLB.



WLB Blaze On 361E

Maternal Brother to Dams of Lots 1, 2 & 3
 Owned By Ferme Gagnon



WLB 323B Rita 490F

Maternal Sister to Lot 3
 Sold in WLB Top Cut Female Sale
 To Tyler Amundson



\$4,250.00

lot 3

WLB Bull 18D 490G

Homo Polled :: Homo Black :: 1288272 :: WLB 490G :: April 3, 2019
 bw-88 :: adj ww-758 :: adj yw-1534

CE	BW	WW	YW	MCE	MWW	MILK	CW	REA	FAT	MARB	API	TI
7.3	1.9	64.8	96.3	3.5	54.9	22.5	29.4	0.88	-0.123	-0.17	121.09	63.03

SIRE NCB COBRA 47Y
 SFM STOUGHTON 18D
 SFM BS 119B

DAM MRL EL TIGRE 52Z
 WLB 52Z TARA 3614C
 JFRS MS 43Y



\$4,250.00

lot 4
WLB BULL 18D 380G

Homo Polled :: Hetro Black :: 1287547 :: WLB 380G :: February 3, 2019
 bw-106 :: adj ww-844 :: adj yw-1439

CE	BW	WW	YW	MCE	MWW	MILK	CW	REA	FAT	MARB	API	TI
6.3	4	73.4	111.6	4.6	67.3	30.6	41	0.94	-0.115	-0.09	122.05	68.26

SIRE NCB COBRA 47Y
SFM STOUGHTON 18D
 SFM BS 119B

DAM MORE'S TANK 108Y
PWK MS TANKY 25X 104A
 PWK MS KOSMO 19T 25X

- Maternal brother to the \$16,000 high selling heifer in our 2019 Top Cut Female Sale purchased by Laura Horner.
- Big, stout performance herd bull.
- Dam was our pick out of the Workman Dispersal.
- Use him to help build a superior cowherd.



WLB 34C Heidi 380F
 Maternal Sister To Lot 4
 Sold in WLB Top Cut Female Sale
 to Horner Cattle Company



OUT

lot 5
WLB BULL 18D 480G

Homo Polled :: Hetro Black :: 1288254 :: WLB 480G :: February 10, 2019
 bw-90 :: adj ww-767 :: adj yw-1327

CE	BW	WW	YW	MCE	MWW	MILK	CW	REA	FAT	MARB	API	TI
5	3.2	71.3	103.2	3.1	59.6	23.9	33.8	0.98	-0.12	-0.12	118.38	66.16

SIRE NCB COBRA 47Y
SFM STOUGHTON 18D
 SFM BS 119B

DAM MRL EL TIGRE 52Z
WLB 52Z TARA 375B
 WINDMILL MS DOMINO 75R

- Another good Stoughton son that makes you look twice.
- Stout made with a smooth build.
- Productive El Tigre dam.
- Two maternal brothers have sold in previous bull sales.
- One daughter in the WLB cow herd.
- ¾ brother to Lots 1, 2 & 3



\$3,500.00

lot 6
WLB BULL 18D 324G

Homo Polled :: Hetro Black :: 1287056 :: WLB 324G :: February 19, 2019
 bw-103 :: adj ww-796 :: adj yw-1361

CE	BW	WW	YW	MCE	MWW	MILK	CW	REA	FAT	MARB	API	TI
6.1	3.5	69.9	104.5	5.5	62.3	27.3	36.4	0.85	-0.112	-0.05	121.22	67.16

SIRE NCB COBRA 47Y
SFM STOUGHTON 18D
 SFM BS 119B

DAM KOP BLACK BARONSON 254Z
WLB 254Z BARB 3570C
 WLB 391Y OLGA 704A

- A Stoughton son that's very worthy of consideration.
- Built right and built strong with a perfect balance.
- Be sure to watch his video.
- His dam is one of our favorite KOP daughters.

lot 7
WLB BULL 18D 400G

Homo Polled :: Hetro Black :: 1287562 :: WLB 400G :: February 14, 2019
 bw-100 :: adj ww-818 :: adj yw-1344

CE	BW	WW	YW	MCE	MWW	MILK	CW	REA	FAT	MARB	API	TI
4.1	4.5	76	110.5	3.4	60.9	22.9	40.2	0.86	-0.109	-0.16	113.26	65.71

SIRE NCB COBRA 47Y
 SFM STOUGHTON 18D
 SFM BS 119B

DAM WLB OIL PATCH 132N 366R
 WLB 366R OLIVE 365T
 WLB 414K EVE 352N

- Long spined, strong topped, good boned Stoughton son.
- Out of a 12 year old Oil Patch daughter. Dam of Muirhead's "Bill" bull, WLB 400Y.
- Maternal brother to dam of Obsidian Black 391Y, herd sire for Double Bar D.
- Four maternal sisters in WLB cowherd.



WLB Bull 223W 400Y
 Maternal Brother of Lot 7
 Owned by Muirhead Cattle Co



OUT

lot 8
WLB BULL 18D 436G

Homo Polled :: Homo Black :: 1288185 :: WLB 436G :: February 1, 2019
 bw-103 :: adj ww-797 :: adj yw-1440

CE	BW	WW	YW	MCE	MWW	MILK	CW	REA	FAT	MARB	API	TI
5.9	3.3	70.4	106.3	4.7	63	27.8	30.6	0.89	-0.117	-0.1	126.08	66.79

SIRE NCB COBRA 47Y
 SFM STOUGHTON 18D
 SFM BS 119B

DAM WLB BLOWOUT 366R 381T
 WLB 381T BETH 383W
 WLB 462P LUCY 354S

- Reminds us of his maternal grandsire, WLB Blowout 381T
- 6TH son produced by his 10 year old Blowout dam.
- Performance and maternal strength.
- API in the top 20%.



WLB Blowout 381T
 Maternal Grand sire of Lot 8
 WLB Foundation Sire



\$4,000.00

lot 9
WLB BULL 18D 513G

Homo Polled :: Hetro Black :: 1288297 :: WLB 513G :: February 9, 2019
 bw-80 :: adj ww-738 :: adj yw-1258

CE	BW	WW	YW	MCE	MWW	MILK	CW	REA	FAT	MARB	API	TI
8.5	0.6	67	102.6	7.4	60.9	27.4	32.6	0.84	-0.112	-0.02	135.21	70.34

SIRE NCB COBRA 47Y
 SFM STOUGHTON 18D
 SFM BS 119B

DAM LFE THE RIDDLER 323B
 WLB 323B RITA 386D
 WLB 462P LUCY 447A

- Attractive and hairy.
- A good calving ease Stoughton son.
- Highly maternal. Cow family known for milk and great udders.
- Cobra and Riddler- always a good combination.
- Full sister in production at WLB.
- MCE in the top 15%. API in top 4% and TI in top 20%



\$7,000.00



OUT

lot **10**
WLB BULL 18D 470G

Homo Polled :: Hetro Black :: 1290716 :: WLB 470G :: February 9, 2019
 bw-n/a :: adj ww-746 :: adj yw-1399

CE	BW	WW	YW	MCE	MWW	MILK	CW	REA	FAT	MARB	API	TI
7.4	2	69.6	110.1	4	60.7	25.9	33.4	0.95	-0.129	-0.04	133.36	69.99

SIRE NCB COBRA 47Y
 SFM STOUGHTON 18D
 SFM BS 119B

DAM SUNNY VALLEY FORCE 47Y
 WLB 47Y FAE 353D
 YR SIMPLY IRRESITIBLE

- Always a show off. Possesses a strong Cobra look.
- Great hair. Nice on the move.
- Black sire, red dam.
- Cow family got its start at WLB with the purchase of a Yellow Rose female.
- API in top 10% and TI in the top 20%



WLB 42Z Gailyn 470F
 Maternal Sister To Lot 10
 Sold in WLB Top Cut Female Sale
 To Triple R Simmentals



\$7,000.00

lot **11**
WLB BULL 34C 314G

Homo Polled :: Hetro Black :: 1287026 :: WLB 314G :: February 22, 2019
 bw-73 :: adj ww-737 :: adj yw-1316

CE	BW	WW	YW	MCE	MWW	MILK	CW	REA	FAT	MARB	API	TI
12.7	-0.5	66.1	95.6	8.2	58.9	25.8	32.5	0.84	-0.11	-0.15	126.98	67.97

SIRE HSF HIGH ROLLER 12T
 SKORS HIGH ROLLER 34C
 SKORS JEWEL 226A

DAM WLB BOUNTY HUNTER 365C
 WLB 365C BOBBI-JO 400E
 WLB 366R OLIVE 365T

- 73 lb birth weight. Calving ease plus maternal strength.
- Extreme in his depth.
- Heavy haired. Square off his rump. Round through his quarter.
- Dam is a maternal sister to lot 7.
- API in top 15%



WLB 366R Olive 365T
 Maternal Granddam To Lot 11



\$6,000.00

lot **12**
WLB BULL 34C 399G

Polled :: Hetro Black :: 1287561 :: WLB 399G :: January 27, 2019
 bw-70 :: adj ww-787 :: adj yw-1312

CE	BW	WW	YW	MCE	MWW	MILK	CW	REA	FAT	MARB	API	TI
16.6	-2.7	64.5	93.3	9.6	60.5	28.2	28.1	0.78	-0.114	-0.1	136.4	71.7

SIRE HSF HIGH ROLLER 12T
 SKORS HIGH ROLLER 34C
 SKORS JEWEL 226A

DAM WFL ABSOLUTE 51Y
 WLB 51Y ABBIE 302E
 PWK MS BLK CANDY 42Z 19C

- Chart topping calving ease with strong maternal influence.
- Extra thick and full of muscle on a moderate frame.
- More than just a heifer bull. Use him to build a cow herd.
- API in top 4% and TI in top 15%

- Proven breed leading genetics. Direct son of RF Flirtin For Certin 37U
- Flush brother to lot 14.
- Style and substance on a faultless skeletal structure.
- Very acceptable numbers.



RF Flirtin For Certin 37U
Dam of Lot 13 & 14



\$3,500.00

lot 13

WLB BULL 34D 201G

Homo Polled :: Homo Black :: 1288723 :: WLB 201G :: February 11, 2019
bw-102 ET :: adj ww-793 :: adj yw-1310

CE	BW	WW	YW	MCE	MWW	MILK	CW	REA	FAT	MARB	API	TI
11.6	1.4	70.6	102.3	7.4	55.1	19.8	29.6	0.83	-0.112	-0.12	130.26	68.48

SIRE NCB COBRA 47Y
NGDB STRUCTURE 34D
NGDB LOUISE 411 B

DAM LFE STREET LEGAL 510S
RF FLIRTIN FOR CERTIN 37U
TLG FLIRTIN WITH YOU

- Flush brother to lot 13.
- Excels on his maternal traits
- Exhibits a good quarter and ideal set to his rear leg.
- Smaller skulled adding to his calving ease possibilities.
- API in top 2%, TI in the top 10%.
- Carcass benefits – REA in the top 20% and Marbling in the top 10%.



NGDB Structure 34D
Sire of Lot 13 & 14



\$4,000.00

lot 14

WLB BULL 34D 200G

Homo Polled :: Homo Black :: 1288157 :: WLB 200G :: February 8, 2019
bw-93 ET :: adj ww-723 :: adj yw-1270

CE	BW	WW	YW	MCE	MWW	MILK	CW	REA	FAT	MARB	API	TI
10.6	1.5	69	100.5	6.6	56.9	22.4	22.4	0.96	-0.122	0.07	142.89	72.76

SIRE NCB COBRA 47Y
NGDB STRUCTURE 34D
NGDB LOUISE 411 B

DAM LFE STREET LEGAL 510S
RF FLIRTIN FOR CERTIN 37U
TLG FLIRTIN WITH YOU



\$8,000.00

lot 15

WLB BULL 361E 353G

Homo Polled :: Homo Black :: 1287385 :: WLB 353G :: February 5, 2019
 bw-88 :: adj ww-873 :: adj yw-1436

CE	BW	WW	YW	MCE	MWW	MILK	CW	REA	FAT	MARB	API	TI
8.7	2.8	73.1	109.9	5.8	59.9	23.3	37.6	0.83	-0.109	-0.1	126.2	68.74

- A leg under all four corners.
- Big ribbed with impressive presentation.
- Possesses as good of maternal pedigree as any bull in the sale. Some of our best cows can be found in his pedigree.
- 88 lb birth weight out of a milky two year old daughter of WLB Stockman 420B(2015 high seller to Harvie Ranches, AB).
- Note his 873 lb adj weaning weight.
- Sired by WLB Blaze On 361E (2018 high seller to Ferme Gagnon, PQ).
- Possesses a nice balanced set of numbers with an API in the top 20%.



Harvie Crest Black Berry 248D
 WLB Stockman 420B Daughter
 Owned by Wilson Stock Farms



Harvie Crest Mia 188D
 WLB Stockman 420B Daughter
 Owned by Wilson Stock Farms

SIRE WLB BOUNTY HUNTER 365C
WLB BLAZE ON 365C 361E
 JFRS MS 43Y

DAM WLB STOCKMAN 420B
WLB 420B STORIE 434E
 WLB 381T BETH 385Y



\$5,400.00

lot 16

WLB BULL 361E 518G

Homo Polled :: Homo Black :: 1288322 :: WLB 518G :: February 4, 2019
 bw-74 :: adj ww-787 :: adj yw-1373

CE	BW	WW	YW	MCE	MWW	MILK	CW	REA	FAT	MARB	API	TI
10.6	0.4	67.6	106.2	6.8	56.4	22.6	39.7	0.85	-0.105	-0.05	131.38	70.05

- Bred for calving ease. 74 lb birth weight out of a two year old Riddler daughter with 462P in his mix.
- Same strong cow family as lot 7 & 11.
- Long spined, thick quartered, and big middled.
- He deserves more than just your heifers.
- BW and API in the top 10%
- CE, MCE, and TI in the top 20%



WLB Obsidian Black 391Y
 Maternal Brother to Lot 16 Dam
 Owned by Double Bar D Farms

SIRE WLB BOUNTY HUNTER 365C
WLB BLAZE ON 365C 361E
 JFRS MS 43Y

DAM LFE THE RIDDLER 323B
WLB 323B RITA 391E
 WLB 462P LUCY 400W

lot **17**
WLB BULL 365C 313G

Homo Polled :: Homo Black :: 1287019 :: WLB 313G :: February 20, 2019
 bw-103 :: adj ww-757 :: adj yw-1315

CE	BW	WW	YW	MCE	MWW	MILK	CW	REA	FAT	MARB	API	TI
6	3.7	68.6	110.7	2.5	55.4	21.1	40.2	0.89	-0.104	-0.02	121.36	66.7

SIRE LFE BOUNTY 3118Z
WLB BOUNTY HUNTER 365C
 LFE BS MARY 26A

DAM WHEATLAND FULL TANK 4141B
WLB 4141B FERN 437D
 WLB 381T BETH 386Y

- Powerful Bounty Hunter son.
- Demanding presence.
- Hairy, long bodied, big hipped, and loaded with character.
- Full brother sold to Lacombe Research Centre, AB.
- Dam is a hard working Full Tank daughter.



WLB Bull 365C 313F
 Brother to Lot 17
 Owned by Lacombe Research Centre



OUT

lot **18**
WLB BULL 365C 311G

Homo Polled :: Homo Black :: 1287015 :: WLB 311G :: March 23, 2019
 bw-89 :: adj ww-844 :: adj yw-1489

CE	BW	WW	YW	MCE	MWW	MILK	CW	REA	FAT	MARB	API	TI
8.2	1.8	68.7	108.7	4.1	58.5	24.1	43	0.93	-0.108	-0.02	125.31	69.67

SIRE LFE BOUNTY 3118Z
WLB BOUNTY HUNTER 365C
 LFE BS MARY 26A

DAM WHEATLAND FULL TANK 4141B
WLB 4141B FERN 331D
 WLB 254Z BARB 418B

- More than just a calving ease bull.
- Loaded with hair.
- Good rib, big middle, plenty of hip
- ¼ brother to lot 17
- Young productive dam with L205 cow in her pedigree.
- In the top 20% for BW and Marbling and on his API and TI.



WLB 18D Sofie 311F
 Maternal Sister to Lot 18
 Sold in WLB Top Cut Female Sale
 To Tiffany Peters



WLB 156S Belle 3554W
 Maternal Granddam to Lot 18



\$5,000.00

lot **19**
WLB BULL 365C 384G

Homo Polled :: Homo Black :: 1287549 :: WLB 384G :: February 7, 2019
 bw-102 :: adj ww-768 :: adj yw-1386

CE	BW	WW	YW	MCE	MWW	MILK	CW	REA	FAT	MARB	API	TI
7.5	4.8	69.9	110.7	5.2	55.6	20.6	37.3	0.77	-0.115	-0.02	120.66	66.28

SIRE LFE BOUNTY 3118Z
WLB BOUNTY HUNTER 365C
 LFE BS MARY 26A

DAM WHEATLAND BULL 462P
WLB 462P LUCY 376E
 SUNNY VALLEY BLK SILK 25S

- Heifers first calf.
- Maternal granddam was a big hipped Dynamite Blk from Sunny Valley.
- Bred to be a herd builder.
- Attractive from any side.



OUT



lot 20
WLB BULL 365C 446G

Polled :: Black :: 1288190 :: WLB 446G :: March 7, 2019
 bw-102 :: adj ww-807 :: adj yw-1389

CE	BW	WW	YW	MCE	MWW	MILK	CW	REA	FAT	MARB	API	TI
8.1	3.3	71.1	108.1	4.5	57.1	21.5	37.5	0.79	-0.11	0.01	124.15	69.42

SIRE LFE BOUNTY 3118Z
 WLB BOUNTY HUNTER 365C
 LFE BS MARY 26A

DAM HART GOOD TIME W223
 WLB 223W GWEN 377A
 MJ BLACK ELLIE MAY 30R

- May be the longest bodied bull in the sale.
- Dam is a direct daughter of Black Ellie May 30R.
- Cow family is known for good udders.
- In the top 25% on both his API and TI



MJ Black Ellie May 30R
 Maternal Granddam of Lot 20



lot 21
WLB BULL 365C 451G

Homo Polled :: Homo Black :: 1288192 :: WLB 451G :: March 8, 2019
 bw-106 :: adj ww-865 :: adj yw-1422

CE	BW	WW	YW	MCE	MWW	MILK	CW	REA	FAT	MARB	API	TI
5.2	4.7	76	119.2	3	57.4	19.4	45	0.85	-0.107	0.06	126.2	71.33

SIRE LFE BOUNTY 3118Z
 WLB BOUNTY HUNTER 365C
 LFE BS MARY 26A

DAM HART GOOD TIME W223
 WLB 223W GWEN 404Z
 WLB 366R OLIVE 358X

- Attractive, straight haired Bounty Hunter son.
- Dam is one of our favorite Good Time daughters.
- Maternal brother to dam of lot 22.
- A good performance bull that can also help build a cow herd.
- Carcass benefits - His Marbling is in the top 10%.
- API in the top 20% and TI in the top 15%.



WLB 223W Gwen 404Z
 Dam of Lot 21



WLB 4161D Nora 451F
 Maternal Sister to Lot 21
 Sold in WLB Top Cut Female Sale
 To Patrick Johnson



lot 22
WLB BULL 365C 479G

Polled :: Black :: 1288253 :: WLB 479G :: February 8, 2019
 bw-84 :: adj ww-793 :: adj yw-1382

CE	BW	WW	YW	MCE	MWW	MILK	CW	REA	FAT	MARB	API	TI
7.3	3.4	77.3	118.9	3.1	55.9	17.2	44.6	0.96	-0.111	-0.03	124.66	71.7

SIRE LFE BOUNTY 3118Z
 WLB BOUNTY HUNTER 365C
 LFE BS MARY 26A

DAM MRL EL TIGRE 52Z
 WLB 52Z TARA 451E
 WLB 223W GWEN 404Z

- Out of a two year old El Tigre daughter (maternal sister to lot 21).
- 84 lb birth weight with almost 800 lb adj weaning weight.
- API in the top 20% and TI in the top 15%.

- 7/8 percentage bull.
- Attractive, deep flanked, blaze faced herd bull.
- 7/8 brother to lot 24.
- Same cow family as lot 6
- Calving ease in the top 15%.
- API in the top 25% and TI in the top 15%.



WLB Bull 323B 704D
Maternal Brother to Lot 23 Dam



\$5,500.00

lot 23

WLB BULL 842D 487G

Homo Polled :: Hetro Black :: 1288270 :: WLB 487G :: March 3, 2019
bw-90 :: adj ww-857 :: adj yw-1398

CE	BW	WW	YW	MCE	MWW	MILK	CW	REA	FAT	MARB	API	TI
7.9	1.3	70	102	4.6	58.3	23.3	31	0.8	-0.11	-0.01	122.82	70.62

SIRE LFE THE RIDDLER 323B
LFE RIG 842D
LFE HEAVEN SENT 30X

DAM MRL EL TIGRE 52Z
WLB 52Z TARA 704C
WLB 462P LUCY 39S

- A Rig son that's been a favorite all summer and still remains on our best bulls list.
- Maternal Grand-dam has compiled a lifetime production record that stands up to a lot of competition having produced eight sons to date that have all sold to either breeders or cow/calf producers. She is our oldest female (13 years) and is again in the calving pen.
- Attractive profile, smooth shouldered with an ideal balance of mass and bone.
- Worthy of serious consideration!
- REA in the top 15% and marbling in the top 20% .
- API in the top 35% and TI in the top 10%.



\$6,000.00

lot 24

WLB BULL 842D 484G

Homo Polled :: Homo Black :: 1288260 :: WLB 484G :: January 31, 2019
bw-108 :: adj ww-785 :: adj yw-1345

CE	BW	WW	YW	MCE	MWW	MILK	CW	REA	FAT	MARB	API	TI
3.5	4.5	80.5	120.4	2.1	60.3	20	35.8	0.99	-0.126	-0.01	119.37	72.49

SIRE LFE THE RIDDLER 323B
LFE RIG 842D
LFE HEAVEN SENT 30X

DAM MRL EL TIGRE 52Z
WLB 52Z TARA 388C
WLB 462P LUCY 373T



\$3,250.00

lot **25**
WLB BULL 842D 486G

Homo Polled :: Homo Black :: 1288269 :: WLB 486G :: February 14, 2019
 bw-103 :: adj ww-776 :: adj yw-1331

CE	BW	WW	YW	MCE	MWW	MILK	CW	REA	FAT	MARB	API	TI
3.8	4.1	77.8	117.8	1.3	58.7	19.8	37.9	1.01	-0.123	-0.03	119.93	70.93

SIRE LFE THE RIDDLER 323B
 LFE RIG 842D
 LFE HEAVEN SENT 30X

DAM MRL EL TIGRE 52Z
 WLB 52Z TARA 435C
 WLB 381T BETH 375W

- ¾ brother to lots 23 & 24
- Attractive presentation, loose hided, tons of hair.
- REA and marbling in top 20%
- API in top 35% and TI in top 15%



MRL El Tigre 52Z
 Maternal Grand Sire for Lots 1, 2, 3, 5, 22,
 23, 25 & 29



\$5,000.00

lot **26**
WLB BULL 842D 302G

Polled :: Black :: 1287008 :: WLB 302G :: February 18, 2019
 bw-77 :: adj ww-743 :: adj yw-1333

CE	BW	WW	YW	MCE	MWW	MILK	CW	REA	FAT	MARB	API	TI
12.1	-0.5	61.3	96.2	8.2	59.4	28.7	33.1	0.81	-0.121	0.05	136.34	70.9

SIRE LFE THE RIDDLER 323B
 LFE RIG 842D
 LFE HEAVEN SENT 30X

DAM MORE'S TANK 108Y
 PWK MS BLK CANDY 42Z 19C
 PWK MS BUGZ 58W 42Z

- A real beef bull! loaded with muscle!
- Good Workman female for a dam.
- Note his calving ease stats.
- CE and MCE in top 10%.
- API in top 3% and TI in top 15%.



PWK Ms Blk Candy 42Z 19C
 Dam of Lot 26



\$3,500.00

lot **27**
WLB BULL 842D 337G

Homo Polled :: Homo Black :: 1287291 :: WLB 337G :: February 19, 2019
 bw-93 :: adj ww-844 :: adj yw-1447

CE	BW	WW	YW	MCE	MWW	MILK	CW	REA	FAT	MARB	API	TI
6.1	4	80.4	120.1	5.9	65.9	25.7	44.1	0.97	-0.118	0.03	125.61	74.84

SIRE LFE THE RIDDLER 323B
 LFE RIG 842D
 LFE HEAVEN SENT 30X

DAM KOP BLACK BARONSON 254Z
 WLB 254Z BARB 400D
 WLB 366R OLIVE 365T

- Maternally loaded with the combination of Heaven Sent 30X on top and the Olive 365T cow on the bottom.
- A maternal brother to WLB Remarkable 337F. Young herd sire retained for service at WLB from last year's bulls.
- Dam is a maternal sister to lot 7.
- Good performance numbers with WW and YW in the top 15%
- API in top 20% and TI in top 4%



WLB Remarkable 337F

lot 28
WLB BULL 842D 381G

Homo Polled :: Homo Black :: 1287548 :: WLB 381G :: March 1, 2019
 bw-104 :: adj ww-916 :: adj yw-1454

CE	BW	WW	YW	MCE	MWW	MILK	CW	REA	FAT	MARB	API	TI
6	4.6	85.4	131.9	4.2	67.4	24.7	44.4	1.07	-0.123	0	127.28	76.8

SIRE LFE THE RIDDLER 323B
 LFE RIG 842D
 LFE HEAVEN SENT 30X

DAM BOUNDARY ODIN 103Z
 PWK MS ODIN 30T 58D
 PWK MS LABEL 3L 30T

- pounds
- Has a real herd bull stamp to him.
- Built from the ground up. Full of muscle.
- Very likeable blaze faced dam.
- Maternal sister went to Far L Farms, ON.
- In the top 3% on WW and YW.
- In the top 15% for API and top 2% for TI.



WLB 34C Heidi 381F381F
 Maternal Sister to Lot 28
 Sold in WLB Top Cut Female Sale
 Owned by Far L Farms



\$3,250.00

lot 29
WLB BULL 842D 494G

Homo Polled :: Homo Black :: 1288279 :: WLB 494G :: February 21, 2019
 bw-103 :: adj ww-784 :: adj yw-1374

CE	BW	WW	YW	MCE	MWW	MILK	CW	REA	FAT	MARB	API	TI
3.8	4.6	80.8	120.6	1.9	57.9	17.5	36.7	0.93	-0.121	0	120.18	72.42

SIRE LFE THE RIDDLER 323B
 LFE RIG 842D
 LFE HEAVEN SENT 30X

DAM MRL EL TIGRE 52Z
 WLB 52Z TARA 447D
 WLB 223W GWEN 384A

- Big quarter and big rib in this herd bull.
- Productive El Tigre mother.
- Maternal brother sold to Jason Mullen, Bowsman, MB in last year's bull sale.



WLB Bull 18D 494F
 Maternal Brother to Lot 29
 Owned by Jason, Mullen



OUT

lot 30
WLB BULL 368D 450G

Homo Polled :: Homo Black :: 1288191 :: WLB 450G :: February 19, 2019
 bw-98 :: adj ww-844 :: adj yw-1425

CE	BW	WW	YW	MCE	MWW	MILK	CW	REA	FAT	MARB	API	TI
6.8	4.2	77.8	114.9	3	58.1	19.2	40.1	0.9	-0.117	-0.18	113.07	67.14

SIRE MRL EL TIGRE 52Z
 WLB GO DADDY 52Z 368D
 BLACKSAND TESS 56A

DAM HART GOOD TIME W223
 WLB 223W GWEN 401Z
 WLB 366R OLIVE 378U

- A Go Daddy son that will add stretch and pounds to his calves.
- Smooth shouldered with a strong build.
- Dam is a productive Good Time daughter.



OUT



\$3,500.00

lot **31**
WLB BULL 20C 362G

Polled :: Black :: 1290709 :: WLB 362G :: February 26, 2019
 bw-n/a :: adj ww-675 :: adj yw-1445

CE	BW	WW	YW	MCE	MWW	MILK	CW	REA	FAT	MARB	API	TI
12.4	-0.3	56.4	84.2	7.9	51.4	23.2	32.4	0.86	-0.124	-0.15	126.62	61.98

SIRE OLF OTIS Y43
MAPLE KEY DOMINATOR
 REMINGTON MISS KNIGHT 63U

DAM TH BLACK EDITION 8R
WLB 8R ENID 378C
 MRL MISS 3491A

- Attractive smooth made blaze faced calving ease bull.
- Bred in calving ease with Black Edition and Odin influence.
- Top 10% for CE, and MCE. Top 4% for BW.
- API in the top 20%



OUT

lot **32**
WLB BULL 20C 205G

Homo Polled :: Hetro Black :: 1290721 :: WLB 205G :: February 12, 2019
 bw-n/a :: adj ww-753 :: adj yw-1271

CE	BW	WW	YW	MCE	MWW	MILK	CW	REA	FAT	MARB	API	TI
7.9	3	74.5	112.4	5.3	55.9	18.6	40	0.87	-0.114	-0.19	115.17	66.57

SIRE OLF OTIS Y43
MAPLE KEY DOMINATOR
 REMINGTON MISS KNIGHT 63U

DAM WLB BULL 322U 400A
WLB 400A STARLA 451C
 WLB 223W GWEN 404Z

- Long topped, moderate skulled herd bull with a great profile.
- Sire is a blaze faced calving ease sire owned by Gracie Falconer, Hartney, MB.
- Dam is maternal sister to lot 21.



\$3,500.00

lot **33**
WLB BULL 368D 4416G

Homo Polled :: Homo Black :: 1287064 :: WLB 4416G :: February 12, 2019
 bw-108 ET :: adj ww-807 :: adj yw-1458

CE	BW	WW	YW	MCE	MWW	MILK	CW	REA	FAT	MARB	API	TI
4.6	3.6	72.9	112.3	1.9	62.4	25.9	40.7	1.08	-0.108	-0.15	120.12	66.36

SIRE MRL EL TIGRE 52Z
WLB GO DADDY 52Z 368D
 BLACKSAND TESS 56A

DAM JT NEW DESIGN 24W
SFM BS 119B
 SFM 77W

- Maternal brother to SFM Stoughton 18D. Sire of lots 1 - 10.
- Powerfull and long made.
- Built like a herd bull.

- Dark red beef bull full of muscle like his sire.
- Full brother to WLB Blood Runner 461F. Sold last year to Kline Simmental, ND.
- Dam is hard working 47Y daughter.
- Blood brother to lot 38.
- 3/4brother to lots 35, 36, 37, & 39. (Blockbuster/Force 47Y).



WLB Blood Runner 461F
Full Brother to Lot 34
Owned by Kline Simmentals



\$3,500.00

lot **34**

WLB BULL 3011C 461G

Homo Polled :: Red :: 1288199 :: WLB 461G :: March 2, 2019
bw-102 :: adj ww-879 :: adj yw-1388

CE	BW	WW	YW	MCE	MWW	MILK	CW	REA	FAT	MARB	API	TI
3.4	4.5	73.5	111.4	-1	58.2	21.4	37.3	0.9	-0.125	-0.16	115.67	64.54

SIRE LFEBISS BLACKADVANCE 426U
LFE BLOCKBUSTER 3011C
LFE RS SHELBY 2120X

DAM SUNNY VALLEY FORCE 47Y
WLB 47Y FAE 356B
WAD 15N ALLI 351S

- Thick and dark red like his sire.
- Youngest red bull in the sale.
- Deserves a good look!
- ¾ brother to lots 34,36,37,38,39, & 40



Sunny Valley Force 47Y
Maternal Grand sire of Lots 34 - 38



\$3,700.00

lot **35**

WLB BULL 3011C 463G

Polled :: Red :: 1288212 :: WLB 463G :: March 29, 2019
bw-99 :: adj ww-792 :: adj yw-1360

CE	BW	WW	YW	MCE	MWW	MILK	CW	REA	FAT	MARB	API	TI
4.9	3.8	69.5	103.8	0	55.7	20.9	30.9	0.9	-0.132	-0.16	115.42	63.35

SIRE LFEBISS BLACKADVANCE 426U
LFE BLOCKBUSTER 3011C
LFE RS SHELBY 2120X

DAM SUNNY VALLEY FORCE 47Y
WLB 47Y FAE 433B
WLB 388W GLORIA 396Z



\$8,000.00

lot **36**
WLB BULL 3011C 459G

Homo Polled :: Red :: 1290711 :: WLB 459G :: February 18, 2019
 bw-n/a :: adj ww-842 :: adj yw-1509

CE	BW	WW	YW	MCE	MWW	MILK	CW	REA	FAT	MARB	API	TI
5	4.8	80	119	0.2	60.8	20.8	33.2	0.87	-0.13	-0.13	121.54	69.1

SIRE LFEISS BLACKADVANCE 426U
 LFE BLOCKBUSTER 3011C
 LFE RS SHELBY 2120X

DAM SUNNY VALLEY FORCE 47Y
 WLB 47Y FAE 424A
 WLB 743T MAY 384X

- Blaze faced Blockbuster with stretch and style.
- Very likeable blaze faced dam with an ideal udder.
- ¾ brother to lots 34,35, 37, 38, 39, & 40
- Performance & maternal power.



\$7,000.00

lot **37**
WLB BULL 3011C 473G

Homo Polled :: Red :: 1288240 :: WLB 473G :: February 7, 2019
 bw-103 :: adj ww-800 :: adj yw-1424

CE	BW	WW	YW	MCE	MWW	MILK	CW	REA	FAT	MARB	API	TI
2.2	5.6	74.8	109.9	-2.2	58.4	21	31.7	0.84	-0.129	-0.11	110.78	64.76

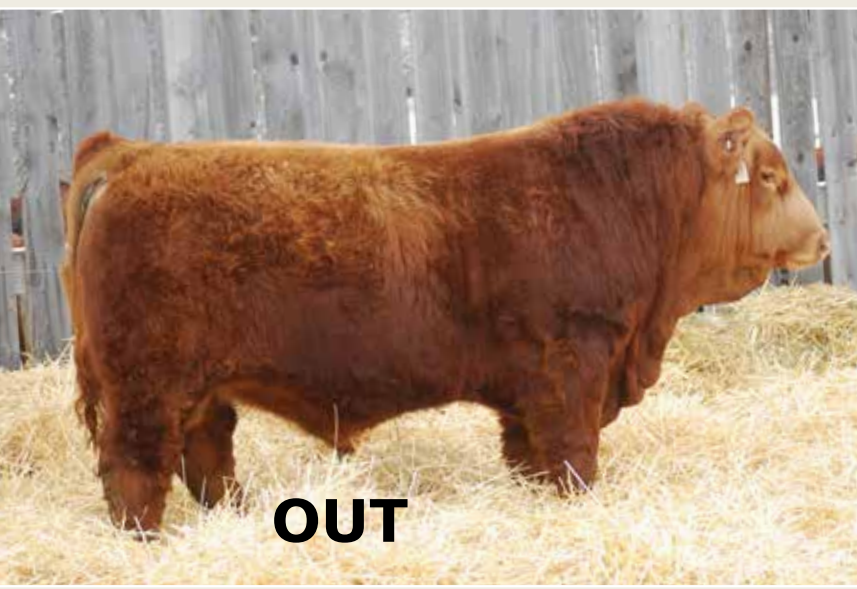
SIRE LFEISS BLACKADVANCE 426U
 LFE BLOCKBUSTER 3011C
 LFE RS SHELBY 2120X

DAM SUNNY VALLEY FORCE 47Y
 WLB 47Y FAE 372D
 CONRAY MAYA 778R

- Blaze faced Blockbuster with added frame and length.
- Blaze faced dam.
- Cow family traces back to perfect uddered Conray cow.
- Keep his daughters.



WLB 441C
 Maternal Brotherr of Lot 37
 Owned by Matt Austin



OUT

lot **38**
WLB BULL 3011C 465G

Polled :: Red :: 1288219 :: WLB 465G :: February 8, 2019
 bw-98 :: adj ww-777 :: adj yw-1270

CE	BW	WW	YW	MCE	MWW	MILK	CW	REA	FAT	MARB	API	TI
4.2	4	68.6	102.2	-0.2	54.7	20.4	32.8	0.85	-0.13	-0.1	118.67	63.71

SIRE LFEISS BLACKADVANCE 426U
 LFE BLOCKBUSTER 3011C
 LFE RS SHELBY 2120X

DAM SUNNY VALLEY FORCE 47Y
 WLB 47Y FAE 356C
 WAD 15N ALLI 351S

- Cow maker.
- Full brother to his dam is herd sire for M & J Farms, MB
- Loose hided, deep flanked.



WLB Bull 47Y 356A
 Full Brother to The Dam of Lot 38
 Owned by M&J Farms

- A mirror image of his sire!
- Dark Red. Deep made with plenty of muscle.
- His dam is a full sister to dam of feature lot 43.
- Cow family traces back to ASP Braveheart 8W. An exceptional Hurricane daughter with a beautiful udder.
- WLB will retain right to collect 100 units of in herd use semen.



LFE Blockbuster 3011C
Sire of Lots 34 -42



\$8,500.00

lot 39

WLB BULL 3011C 466G

Homo Polled :: Red :: 1288223 :: WLB 466G :: February 5, 2019
bw-94 :: adj ww-795 :: adj yw-1329

CE	BW	WW	YW	MCE	MWW	MILK	CW	REA	FAT	MARB	API	TI
4.8	3.9	70	102.3	-0.2	58	23	31.1	0.92	-0.133	-0.13	116.36	64.36

SIRE LFEBISS BLACKADVANCE 426U
LFE BLOCKBUSTER 3011C
LFE RS SHELBY 2120X

DAM SUNNY VALLEY FORCE 47Y
WLB 47Y FAE 343D
WLB 756T TRESSIE 3556B

- Performance and maternal in an attractive herd bull.
- Maternal brother was 2018 top selling bull going to Triple T Diamond, MB.
- Real power bull for your cows.



WLB Big Easy 8A 385E
Maternal Brother to Lot 40
Owned by Triple T Diamond



\$4,500.00

lot 40

WLB BULL 3011C 385G

Homo Polled :: Red :: 1287551 :: WLB 385G :: February 18, 2019
bw-109 :: adj ww-892 :: adj yw-1423

CE	BW	WW	YW	MCE	MWW	MILK	CW	REA	FAT	MARB	API	TI
4.1	5.1	77.4	113.4	0.7	60.7	22	37.1	0.81	-0.126	-0.12	116.54	67

SIRE LFEBISS BLACKADVANCE 426U
LFE BLOCKBUSTER 3011C
LFE RS SHELBY 2120X

DAM WHEATLAND BULL 462P
WLB 462P LUCY 460C
WLB 47Y FAE 428A



\$6,000.00

- Both parents black.
- Sired by \$32,000 Big Northern 4161D (L205 cow family).
- Dam is maternal sister to Lotto 52Y.
- Long spined, thick butted performance herd bull.
- Powerful proven black genetics with a red twist.



WLB 323B Rita 367D
Maternal Sister to Lot 41



WLB 323B Rita 367F
Maternal Sister to Lot 41
Sold in WLB Top Cut Female Sale
To Patrick Johnson

lot **41**
WLB BULL 4161D 367G

Homo Polled :: Red :: 1287537 :: WLB 367G :: February 25, 2019
bw-102 :: adj ww-807 :: adj yw-1386

CE	BW	WW	YW	MCE	MWW	MILK	CW	REA	FAT	MARB	API	TI
3.1	4.5	80.9	116.9	0.9	59.8	19.3	41.5	0.89	-0.115	-0.25	106.3	65.87

SIRE MRL EL TIGRE 52Z
WLB BIG NORTHERN 52Z 4161D
WLB 156S BELLE 3552W

DAM HARVIE JDF WALLBANGER111X
BLACKSAND TESS 51A
SPRINGCREEK BLK TESS 25T



\$3,200.00

lot **42**
WLB BULL 3011C 422G

Polled :: Red :: 1288175 :: WLB 422G :: March 8, 2019
bw-98 :: adj ww-820 :: adj yw-1378

CE	BW	WW	YW	MCE	MWW	MILK	CW	REA	FAT	MARB	API	TI
5.9	3.7	68	97.3	3	60.3	26.3	33.2	0.84	-0.123	-0.16	112.54	62.76

SIRE LFEBISS BLACKADVANCE 426U
LFE BLOCKBUSTER 3011C
LFE RS SHELBY 2120X

DAM SPRINGCREEK BLK TANK 99T
SPRINGCREEK ARROW 168X
SPRINGCREEK LINNE 10R

- Smooth made.
- Blaze faced
- Will add muscle and depth to his progeny.
- Dam is a blaze faced, small teated Spring Creek cow.

NANCY & I WOULD LIKE TO THANK THE FOLLOWING FOR THEIR SUPPORT IN 2019

Wilson Stock Farms, AB
Labatte Simmentals, SK
Louis Cossette, PQ
Tyler Amundsen, AB
Sweet Grass Ranch, MB
Far L Farms, ON
Berts NR Simmentals, MB
Maverick Cattle Co., AB
Corrie Martins, MB
Evergreen Farms, MB

Meghan & Ashley Black, NB
Patrick Johnson, MB
Tiffany Peters, SK
Nick Fletcher, MB
Sydney Dekoning, MB
Tim Davies, MB
Emma Falconer, MB
Circle G Farms, AB
Maple Falls Simmental, ON
Dana Johns, MB

Laura Horner, MB
Sheila Tanner, MB
Chechmate Simmental, AB
Michel Gagnon, PQ
Sunny Valley Simmental, SK
Perkins Land and Cattle, MB
Johnathan Dagg, SK
Southam Simmentals, MB
Clint Marchant, MB
Triple R Simmentals, MB

Deeg/Cdn Donors, AB
Circle 7 Farms, SK
Alan Manns, MB
Jonathan Grunart, SK
Darris Johnson, MB
Bill Seymour, SK
Sandra Jeffery, SK
Devon Manns, MB
Abe Unrau, MB
Matt Austin, IN

Kline Simmentals, ND
Josef Upgang, MB
Les Jack, MB
Glen Aldentaler, SD
Don Rickard, MB
Glen Bollman, MB
Samantha McDonald, MB
Jim Brown, WI
Lacombe Reserch Station, AB
Tim Penner, MB

Branden Freund, MB
Rod Chizawsky, MB
Corey Jones, MB
Leighton Shroeder, MB
Jason Mullin, MB
Brian Yasieniuk, SK
Mike Morrison, MB
Gary Goossen, MB
Lorne Smart, MB
B2 Cattle Co., MB



WLB 47Y Fae 343E
Lot 43 at Birth



Sunny Valley Force 47Y
Maternal Grand sire of Lot 43 & 45
WLB Foundation Sire



\$52,500.00

It's hard to believe how deep and thick 456G is today and the big ribbed full barreled bull he has matured into since his 75 pound unassisted birth. Thanks to cell phone camera's we can show you a picture of lot 43 not even five minutes old with his two year old dam fussing over him with a perfect table set and waiting for his first meal. It was very satisfying to watch his two year dam embrace motherhood for the first time. It makes you appreciate how an easy birth aids a bred yearling with her transition into motherhood. Needless to say it was a good first day of life for him and a first day of being a mother for her. While it's easy to promote him for his Calving Ease, come and see lot 43 sale day or watch his video and you will agree he stands for a lot more. His skeletal build has a big full rib and square wide hip supported with a leg on every corner. He's soft in his look and really nice in his muscle expression. Lot 43 tops his attributes off with a real beef bull look that you're going to see 24/7. He owns it. In short lot 43 is more than just a heifer bull. Make sure you breed some of your best cows to him. We plan to. *We will retain the right to collect 100 units of semen for in herd use.*

lot 43

WLB BULL 52E 456G

Homo Polled :: Red :: 1288193 :: WLB 456G :: February 21, 2019
bw-75 :: adj ww-815 :: adj yw-1332

CE	BW	WW	YW	MCE	MWW	MILK	CW	REA	FAT	MARB	API	TI
12.9	0.3	65.5	99.7	6.6	57.7	24.9	25.9	0.83	-0.129	-0.03	135.59	70.3

SIRE TNT BOOTLEGGER Z268
MAR MAC UTAH WHISKY 52E
MAR MAC UTAH'S DREAM 79U

DAM SUNNY VALLEY FORCE 47Y
WLB 47Y FAE 343E
WLB 756T TRESSIE 3556B

lot 44

WLB BULL 52E 464G

Polled :: Red :: 1288214 :: WLB 464G :: February 10, 2019
bw-97 :: adj ww-851 :: adj yw-1414

CE	BW	WW	YW	MCE	MWW	MILK	CW	REA	FAT	MARB	API	TI
1.5	2.7	71.8	111	-3.8	60.9	24.9	28.5	0.83	-0.126	-0.04	120.09	68.86

SIRE TNT BOOTLEGGER Z268
MAR MAC UTAH WHISKY 52E **DAM** SUNNY VALLEY FORCE 47Y
MAR MAC UTAH'S DREAM 79U WLB 47Y FAE 344E
WLB 756T TRESSIE 424B

- Soggy, deep middled bull.
- Good n solid in his skeletal structure.
- A two year old Force 47Y daughters first calf.



WLB 756T Tressie 424B
Maternal Granddam to Lot 44



\$7,500.00



\$4,500.00



\$6,500.00



\$8,250.00

lot **45**
WLB BULL 52E 393G

Homo Polled :: Red :: 1287557 :: WLB 393G :: February 27, 2019
bw-82 :: adj ww-803 :: adj yw-1297

CE	BW	WW	YW	MCE	MWW	MILK	CW	REA	FAT	MARB	API	TI
10.7	1.5	69	103.1	7.6	59.7	25.2	27	0.72	-0.123	-0.09	125.76	68.76

SIRE TNT BOOTLEGGER Z268
MAR MAC UTAH WHISKY 52E
MAR MAC UTAH'S DREAM 79U

DAM KUNTZ SHERIFF 8A
WLB 8A SHELINA 351E
WILC QUEENIE 6A

- Physical build and makeup of a true heifer bull.
- Should also produce some daughters worth keeping.
- ¾ brother to lot 46.
- API in the top 15%



WILC Queenie 6A
Maternal Granddam of Lot 45

lot **46**
WLB BULL 52E 394G

Homo Polled :: Red :: 1287559 :: WLB 394G :: January 31, 2019
bw-77 :: adj ww-803 :: adj yw-1361

CE	BW	WW	YW	MCE	MWW	MILK	CW	REA	FAT	MARB	API	TI
11	-0.5	65.6	100.7	4.5	58.7	25.9	28.7	0.74	-0.127	-0.08	128.94	69.71

SIRE TNT BOOTLEGGER Z268
MAR MAC UTAH WHISKY 52E
MAR MAC UTAH'S DREAM 79U

DAM KUNTZ SHERIFF 8A
WLB 8A SHELINA 466E
WLB 47Y FAE 372C

- Great calving ease pedigree. Utah, Sheriff, Force 47Y.
- Strong topped, smooth shouldered, moderate skulled.
- Good spread between birth and YW.
- BW in the top 4%
- CE, API, & TI in the top 25% and above.

lot **47**
WLB BULL 52E 539G

Homo Polled :: Red :: 1288337 :: WLB 539G :: February 5, 2019
bw-76 :: adj ww-787 :: adj yw-1365

CE	BW	WW	YW	MCE	MWW	MILK	CW	REA	FAT	MARB	API	TI
11.8	0.4	73.5	109.3	7.8	62.3	25.5	35.3	0.88	-0.125	-0.08	130.95	73.33

SIRE TNT BOOTLEGGER Z268
MAR MAC UTAH WHISKY 52E
MAR MAC UTAH'S DREAM 79U

DAM ERIXON GAME ON 42Z
WLB 42Z GAILYN 364E
NUG MOLLY 86Y

- Calving ease/performance genetics, Utah and Game On.
- Nice spread between his birth weight and YW.
- ¾ brother to lots 48, 49, 50, and 51.
- Dam is maternal sister to dam of lot 52.
- In the top 10% for CE, BW, MCE, API, & TI.



NUG Molly 86Y
Maternal Granddam of Lot 47

- Exceptional look .
- Exceptional birth weight.
- Exceptional cow family. One of our favorites.
- ¼ brother to lots 47, 49, 50, and 51
- Exceptional EPDs. CE, BW, MCE & API in top 5% or higher.



WLB 411F
Maternal Sister to Lot 48 Dam
Sold in WLB Top Cut Female Sale
To Perkin Land & Cattle Co



\$8,500.00

lot **48**

WLB BULL 52E 540G

Homo Polled :: Red :: 1288339 :: WLB 540G :: February 9, 2019
bw-62 :: adj ww-831 :: adj yw-1361

CE	BW	WW	YW	MCE	MWW	MILK	CW	REA	FAT	MARB	API	TI
13	-0.8	67.4	100.5	9.3	61.2	27.5	32.4	0.81	-0.119	-0.06	134.45	71.86

SIRE TNT BOOTLEGGER Z268
MAR MAC UTAH WHISKY 52E
MAR MAC UTAH'S DREAM 79U

DAM ERIXON GAME ON 42Z
WLB 42Z GAILYN 411E
WLB 468P HALEY 368U

- Well balance, long bodied herd bull.
- Visually appealing with loads of character.
- ¼ brother to lots 47, 48, 50, and 51.
- CE in top 10%. MCE in top 4%.
- API in top 15% and TI in the top 20%.



Mar Mac Utah Whisky 52E
Sire to Lot 43 - 51



\$8,750.00

lot **49**

WLB BULL 52E 542G

Homo Polled :: Red :: 1288347 :: WLB 542G :: February 6, 2019
bw-88 :: adj ww-816 :: adj yw-1357

CE	BW	WW	YW	MCE	MWW	MILK	CW	REA	FAT	MARB	API	TI
11.9	2.1	71.8	107.5	9.3	60.7	24.8	28.7	0.78	-0.128	-0.08	127.91	70.28

SIRE TNT BOOTLEGGER Z268
MAR MAC UTAH WHISKY 52E
MAR MAC UTAH'S DREAM 79U

DAM ERIXON GAME ON 42Z
WLB 42Z GAILYN 431E
WLB 388W GLORIA 355Z



OUT

lot 50
WLB BULL 52E 543G

Homo Polled :: Red :: 1288349 :: WLB 543G :: February 6, 2019
bw-90 :: adj ww-824 :: adj yw-1317

CE	BW	WW	YW	MCE	MWW	MILK	CW	REA	FAT	MARB	API	TI
11.5	2.1	71.6	107.1	8.9	60.5	24.7	28.3	0.78	-0.129	-0.11	125.47	69.35

SIRE TNT BOOTLEGGER Z268
MAR MAC UTAH WHISKY 52E
MAR MAC UTAH'S DREAM 79U

DAM ERIXON GAME ON 42Z
WLB 42Z GAILYN 433E
WLB 388W GLORIA 396Z

- Long sided and long hipped like all his brothers.
- ¾ brother to lots 47, 48, 49, and 51.
- Maternal brother to his dam sells as lot 35.
- Two maternal sisters to his dam in the cow herd.
- In top 20% or higher on his CE, MCE, API, and TI.



WLB 47Y Fae 433D
Maternal Sister to Lot 50 Dam



\$5,500.00

lot 51
WLB BULL 52E 544G

Homo Polled :: Red :: 1288350 :: WLB 544G :: February 22, 2019
bw-87 :: adj ww-878 :: adj yw-1350

CE	BW	WW	YW	MCE	MWW	MILK	CW	REA	FAT	MARB	API	TI
14.1	0.6	72.5	111.1	9.9	62.5	26.2	34.4	0.87	-0.126	-0.07	137.22	73.39

SIRE TNT BOOTLEGGER Z268
MAR MAC UTAH WHISKY 52E
MAR MAC UTAH'S DREAM 79U

DAM ERIXON GAME ON 42Z
WLB 42Z GAILYN 457E
WLB 47Y FAE 362A

- Deserves a good look.
- Long and deep, square hipped. Good in his joints.
- ¾ brother to lots 47, 48, 49, and 51.
- Calving ease runs deep in his genetics, Utah, Game On, and Force 47Y.
- Green (above breed average) in every category but one on his percentile graph.



WLB Bull 462P 457C
Maternal Brother to Lot 51 Dam
Owned by Eric Whitfield



WLB 24C Westlyn 457F
Maternal Sister to Lot 51 Dam
Sold in WLB Top Cut Female Sale
To Evergreen Farms



\$4,750.00

lot 52
WLB BULL 42Z 472G

Polled :: Red :: 1288237 :: WLB 472G :: February 7, 2019
bw-79 :: adj ww-848 :: adj yw-1374

CE	BW	WW	YW	MCE	MWW	MILK	CW	REA	FAT	MARB	API	TI
11.7	0	77.8	117.6	7.5	68.3	29.4	39	0.99	-0.133	-0.06	139.38	77.62

SIRE KOP CROSBY 137W
ERIXON GAME ON 42Z
ERIXON LADY 90T

DAM SUNNY VALLEY FORCE 47Y
WLB 47Y FAE 364D
NUG MOLLY 86Y

- Game On with outstanding calving ease and maternal credentials.
- Deep sided, flat shouldered with a smaller skull.
- Dam is out of a good Maxwell female. Maternal sister to dam of lot 47.
- Nothing but green on his percentile graph! Above breed average in every trait, including carcass.



NUG Molly 86Y
Maternal Granddam to Lot 52

lot 53
WLB BULL 42Z 485G

Homo Polled :: Red :: 1288261 :: WLB 485G :: February 11, 2019
 bw-75 :: adj ww-764 :: adj yw-1396

CE	BW	WW	YW	MCE	MWW	MILK	CW	REA	FAT	MARB	API	TI
15	-2	68.7	99.1	11.2	59	24.6	32.6	0.9	-0.133	-0.13	136.59	72.4

SIRE KOP CROSBY 137W
 ERIXON GAME ON 42Z
 ERIXON LADY 90T

DAM MRL EL TIGRE 52Z
 WLB 52Z TARA 389C
 WLB 462P LUCY 380U

- We should be walking this guy instead of selling him!
- He's bred to be a true calving ease and maternal herd sire. Check out the actual birth weights on his siblings and his mother's brothers and sisters. Awesome!
- He's got some performance too, almost a 1400lb adj YW!
- Good enough to use on your cows also.
- CE, BW, MCE, and API all in the top 3% or higher.



WLB 368D Della 389F
 Maternal sister to Lot 53
 Sold in WLB Top Cut Female Sale
 To Southam Farms



\$14,000.00

lot 54
WLB BULL 42Z 349G

Polled :: Red :: 1287371 :: WLB 349G :: February 2, 2019 :: Twin
 bw-73 :: adj ww-739 :: adj yw-1257

CE	BW	WW	YW	MCE	MWW	MILK	CW	REA	FAT	MARB	API	TI
9	2.5	77.6	114.9	8.1	62.1	23.3	33.5	0.78	-0.136	-0.12	127.1	71.6

SIRE KOP CROSBY 137W
 ERIXON GAME ON 42Z
 ERIXON LADY 90T

DAM COME AS U R RED ROCKET
 WLB 29A ROCKET GIRL 423C
 WLB 743T MAY 356X

- 73lb birth weight.
- Good ribbed, strong topped bull.
- Soggy, deep bodied Red Rocket dam.
- In the top 20% or better for WW, YW, MCE, Stay, API, and TI



WLB 29A Rocket Girl 423C
 Dam of Lot 54



\$4,100.00

lot 55
WLB BULL 42Z 343G

Polled :: Red :: 1287302 :: WLB 343G :: January 31, 2019
 bw-90 :: adj ww-705 :: adj yw-1297

CE	BW	WW	YW	MCE	MWW	MILK	CW	REA	FAT	MARB	API	TI
11.1	1.3	70.9	103.1	9.3	61.1	25.6	29.1	0.83	-0.139	-0.1	127.1	70.15

SIRE KOP CROSBY 137W
 ERIXON GAME ON 42Z
 ERIXON LADY 90T

DAM CMS TRADEMARK 756T
 WLB 756T TRESSIE 3556B
 ASP BRAVEHEART 8W

- Maternal brother to dams of lot 39 and 43.
- Deep bodied, long spined, hairy Game On son.
- Keep his daughters for replacements.
- CE and BW in top 15%, MCE in top 3%
- API in the top 15% and TI in the top 20%



Erixon Game On 42Z
 Sire of Lots 52 - 55



\$4,000.00



\$6,500.00

lot 56

LFE RIG 842D

Homo Polled :: Homo Black :: 1210142 :: LFE 842D :: December 29, 2016
 bw-98 :: adj ww-791 :: adj yw-1500

SIRE LFE GOTHAM 819Y
LFE THE RIDDLER 323B
 LFE BS CHARO 23Y

DAM LFEBISS BLACKADVANCE 426U
LFE HEAVEN SENT 30X
 LFE BS MISS LEWIS 614S

CE	BW	WW	YW	MCE	MWW	MILK	CW	REA	FAT	MARB	API	TI
5.3	3.9	87.2	137	5.1	61.7	18.1	58.4	1.09	-0.122	0.14	134.61	81.32

Opportunity knocks! Our decision to catalogue Rig wasn't made lightly and sale day isn't here yet. When you see his sons you will appreciate the length of body and muscle mass Rig puts in his progeny. He definitely adds pay weight to a weaned calf crop. His calves are born long bodied and have the vigor that drives them to get up fast and go find their first milk. His pedigree is among the elite being sired by Riddler and out of Lewis' Heaven Sent 30X cow. A Lot of herd bulls could take a lesson from this guy. Rig's breeding prowess is second to none. He loves his job and covers his cows easily, never getting hung up on one cow - he loves them all. With the Riddler influence we have and now Rig's upcoming daughters we feel now is the right time to make him available to the industry, commercial or purebred. We will retain semen for our in herd use.



LFE Heaven Sent 30X
 Dam of Lot 56



LFE The Riddler 323B
 Sire of Lot 56



WLB Bull 842D 487G



WLB Bull 842D 484G Lot 24 Son of



WLB Bull 842D 302G



WLB Bull 842D 381G

REFERENCE SIRES



LFE Blockbuster 3011C



Mar Mac Utah Whisky 52E



Erixon Game On 42Z



WLB Big Northern 52Z 4161D



WLB Blaze On 365C 361E



Skors High Roller 34C



SFM Stoughton 18D



LFE Rig 842D



WLB Bounty Hunter 365C



WLB Go Daddy 52Z 368D



NGDB Structure 34D

Maple Key **DOMINATOR**

SIRE OLF ODIN U5
OLF OTIS Y43
OLF MISS GUNNER W8

DAM REMINGTON ON TARGET 2S
REMINGTON MISS KNIGHT 63U
BAR 15 MISS KNIGHT78E-51G

picture is unavaliable

WLB LIVESTOCK
Box 327
DOUGLAS, MANITOBA R0K 0R0

WLB LIVESTOCK

WLB Red Foundation Sire

His Influence and the influence of other great bulls can be found within these pages.



SUPERIOR GENETICS
FOR THE COW/CALF PRODUCER

6 miles north, 1 mile east, 1/2 miles north of Douglas, Manitoba
wblivestock@gmail.com
videos online at www.wblivestock.com