

\*LOCATION CHANGED TO KILLARNEY AUCTION MART • KILLARNEY, MB\*

40<sup>th</sup> Annual

# PEMBINA TRIANGLE

Simmental Association

Friday 2:00 PM

November 20, 2020

*Female Sale*

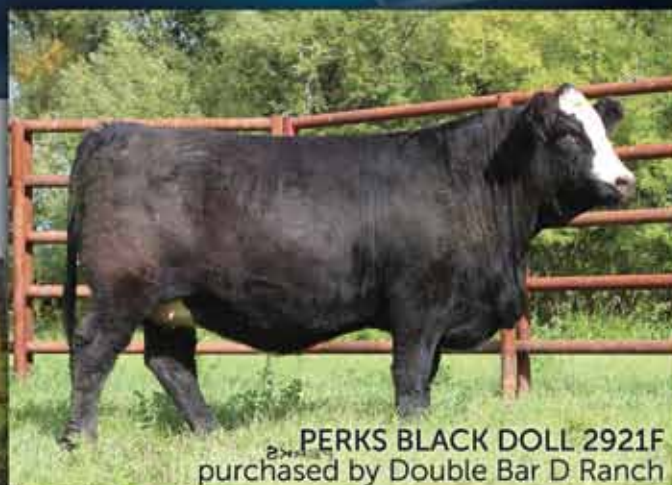
NEW LOCATION

KILLARNEY AUCTION MART • KILLARNEY, MB



SILVERLAKE BOUND FOR GLORY 51G  
purchased by Bert's NR Simmentals

2019 High Selling Open Heifer



PERKS BLACK DOLL 2921F  
purchased by Double Bar D Ranch

2019 High Selling Bred Heifer

## CONSIGNORS

Bert's NR Simmentals • Delight Simmental • Dequier Cattle Co  
Handford Simmentals • Homestead-T Simmentals • Oakview Simmentals  
Perkin Land & Cattle Co • Silver Lake Farms • Skyridge Farms  
Southam Simmentals • Triple R Simmentals • Twin Meadow Livestock Farms  
Twin Oak Livestock • Van De Velde Cattle • Wilcox Simmentals



**SALE GROSS \$277,600.00**

**61 HEAD AVERAGED \$4,551.00**

**AVERAGES:**

<b>21 PUREBRED BRED</b>	<b>\$4,821.00</b>
<b>04 PUREBRED OPEN</b>	<b>\$2,875.00</b>
<b>15 BLACK PUREBRED BRED</b>	<b>\$4,593.00</b>
<b>07 BLACK PUREBRED OPEN</b>	<b>\$4,121.00</b>
<b>07 FULLBLOOD BRED</b>	<b>\$5,036.00</b>
<b>07 FULLBLOOD OPEN</b>	<b>\$4,550.00</b>

**HIGH SELLERS:**

LOT 55	\$12,500.00	DOUBLE BAR D RANCH, GRENFELL, SK
LOT 32	\$10,500.00	LAZY MC ANGUS, BASSANO, AB
LOT 01	\$ 8,750.00	HANDFORD SIMMENTALS, SNOWFLAKE, MB
LOT 11	\$ 8,250.00	OAKVIEW SIMMENTALS, DARLINGFORD, MB
LOT 14	\$ 7,000.00	TWIN MEADOW LIVESTOCK FARMS/ALLIANCE SIMMENTALS, TREHERNE, MB/NORTH GOWER, ON
LOT 60	\$ 6,500.00	RUBY LANE FARM, CALDWELL, TX
LOT 62	\$ 6,000.00	TWIN MEADOW LIVESTOCK FARMS/ALLIANCE SIMMENTALS, TREHERNE, MB/NORTH GOWER, ON
LOT 15	\$ 6,000.00	BERT'S NR SIMMENTALS, HAYWOOD, MB

**TRANSCON ON ORDER:**

LOT 27	\$ 5,250.00	VIRGINIA RANCH, CREMONA, AB
LOT 05	\$ 5,000.00	NORTHERN LIGHT SIMMENTALS, ROSSBURN, MB
LOT 56	\$ 5,000.00	NORTHERN LIGHT SIMMENTALS, ROSSBURN, MB
<b>3 LOTS TALLING \$15,250.00</b>		

**VOLUME BUYERS:**

5 LOTS	\$16,900.00	KREUTNER FARMS LTD., ROBLIN, MB
4 LOTS	\$16,250.00	S & S SIMMENTALS, ENDEAVOUR, SK
3 LOTS	\$14,750.00	BLUE ZONE LIVESTOCK, NOTRE DAME DE LOURDES, MB
3 LOTS	\$11,250.00	KK FARM, ROBLIN, MB
3 LOTS	\$ 8,000.00	DONNA DESROCHERS, BALDER, MB



# Consignors

## *Bert's NR Simmentals*

**Norbert, Pam, Sam & Nathan de Rocquigny**  
Haywood, MB R0G 0W0  
Norbert's Cell: 204 745-7930  
Website: www.BertsNRSimmentals.com  
Facebook: www.facebook.com/BertsNRSimmentals  
email: npderocquigny@mynetset.ca

## *Delight Simmental*

**Gordon Delichte**  
Box 26, St Alphonse, MB R0K 1Z0  
Ph: 204 836-2116 Cell: 204 526-7502  
email: G.Delichte@gmail.com

## *Dequier Cattle Co.*

**Mike & Monique Dequier**  
**Patrick, Katryn, Rayanne**  
Mike cell: 204 745-8750 home: 204 379-2113  
Box 155, Haywood MB R0G 0W0  
email: mdequier@msn.com

## *Handford Simmentals*

**Robert, Pam, Jason, Jayme & Riley Handford**  
Ph: 204-876-4658 Cell: 204-242-4359 Fax: 204-876-4620  
Snowflake, MB  
email: robhand1@hotmail.com

## *Homestead-T Simmentals*

**Marcel, Aline Theroux and Sons**  
Box 215, Notre-Dame-de-Lourdes, MB R0G 1M0  
Ph: 204-248-2008 Cell: 204-750-1147 David's Cell: 204-750-1039  
email: matheroux@hotmail.com donna email: dreid\_olds@yahoo.com

## *Oakview Simmentals*

**Todd, Danna, Brooke & Hayden Collins**  
Box 37, RR 2, Darlingford, MB R0G 0L0  
Ph: 204 246-2166 Cell: 204 823-1434  
email: oakviewsimmentals@inethome.ca  
website: oakviewsimmentals.com

## *Perkin Land & Cattle Co.*

**Darryl, Tanya, Liam & Ivy Perkin**  
Box 138, Elgin, MB R0K 0T0  
Ph: 204 769-2159 Cell: 204 534-8137  
emails: tanyabeech@msn.com or darryl@perkinlandandcattle.com  
website: perkinlandandcattle.com

## *Silver Lake Farms*

**Clint Marchant & Andrea Bertholet**  
Box 55, Cartwright, MB R0K 0L0  
Cell: 204 825-8012 Andrea cell: 204 851-6087  
email: adbertholet@hotmail.com

## *Skyridge Farms*

**Gilles, Jenny, Madi & Nick Vuignier**  
St. Claude, MB  
Ph: 204-750-2210  
email: g.vuignier@pembinacoop.ca

8 - 12

26 - 31

49 - 51

36 - 38

39 - 42

13 - 18

32 - 35

55 - 59

60 - 62

## *Southam Simmentals*

**Rene Rouire, Sharon Southam & family**  
Box 91, Elm Creek, MB R0G 0N0  
Ph: 204 436-3013  
Rene's Cell: 204 745-8508 Sharon's Cell: 204 745-7881  
email: rsrouire@mymts.net

## *Triple R Simmentals*

**Rick Dequier**  
Roland & Yvonne Dequier  
Darrell, Jacquie, & Janessa Warkentin  
Box 1673, Carman, MB R0G 0J0  
Rick cell: 204 771-0280  
Email: rdequier@westmansteel.ca  
Website: www.triplersimmentals.wix.com/tripler

## *Twin Meadow Livestock Farms*

**Patrick & Tracey Wilcox**  
Box 531, Treherne, MB R0K 2V0  
Ph: 204 723-2386 Cells: 204 526-7060 or 204 723-0029  
email: patricktracey2010@hotmail.com

## *Twin Oak Livestock*

**Gary, Josie & Mary Jane Robinson**  
Box 412, Treherne, MB R0H 2V0  
Ph: 204 723-2275 Cell: 204 526-5010  
email: twinoaklimousin@hotmail.ca

## *Van de Velde Cattle*

**Jared** 204 825-4305 **Max** 204 825-4289  
Box 72, Mariapolis, MB R0K 1K0  
email: jared-vdv-8@hotmail.com

## *Wilcox Simmentals*

**Ernie, Betty, Anthony & Ariel Wilcox**  
Box 22, Treherne, MB R0G 2V0  
Ph: 204 723-2735 Cell: 204 526-7183 Anthony cell: 204 750-1658  
email: wilcox@wilcoxsimmentals.com  
website: www.wilcoxsimmentals.com

21 - 25

1 - 7

43 - 45

19, 20

52 - 54

46 - 48



### *VISA or Mastercard payments*

There is a 3% administration fee on all VISA or Mastercard purchases applied to the buyer's invoice.

### **Delivery:**

We encourage you to bring your trailer to the sale. Delivery can be provided at cost to the buyer.

### **Livestock Insurance:**

Keystone Livestock Services 204 729-5439

### **EPDs are in the following order:**

CE BW WW YW Milk MCE MWW

Catalog production by jameswaycatalogs.com  
Cover design by Keltey Whelan

## Offering 63 Head

44 bred heifers

24 Red, 13 Black 7 Fullblood

19 open heifers

5 Red, 7 Black, 7 Fullblood

**Auctioneer:** Ward Cutler

**Ringmen:**

Cody Haney 403 559-8809

Robert Lind 780 542-0123

**Sale day phones:**

Jay Good 403 556-5563 Darren Paget 403 323-3985

Glenn Norton 780 542-0634 Cody Haney 403 559-8809

Scott Bohrsen 403 370-3010 Matt Criddle 306 539-6934

*Online viewing & bidding:*

View & bid online at [www.dlms.ca](http://www.dlms.ca)

Mark Shologan 780 699-5082



**BOHRSON**  
MARKETING SERVICES

[www.bohrson.com](http://www.bohrson.com)

Scott Bohrsen 403 370-3010

Matt Criddle 306 539-6934

## Presidents Message

2020 has been a year to remember. I hope we are able to look back on all areas of our lives and say we lived thru the Covid era and that all has returned to near normal. We can be thankful that we are in the Ag business; a business of necessity, resilience, and camaraderie. Necessity in that the world needs to eat and in times of crisis basic staples of life become an important focal point. Resilience in the fact that farmers have seen ups and downs and are often prepared for the unexpected. Camaraderie of the people in our business. I personally talk to many farmers every week.....it's good to talk about farming and life, for everyone's well being. In 2020 we can be thankful for the good harvest weather we had this year, and I hope everyone has a safe and successful fall season.

The Pembina Triangle is celebrating 40 years. Even though we cannot have a great big party at this time, we still would like to invite you to the 40th annual sale. The cattle at the event seem to get better every year. Many of the females sold at the sale over the years have gone on to give their purchasers big returns, something the members of the PTSA can be very proud of.

The sale will go on as usual this year. We do encourage you to come the day before if you can, to evaluate the cattle, or give each consignor a call days before the sale to ask them about an animal you may be interested in. Please use our trusted sales team or internet bidding if you don't feel comfortable in the stands. We will be encouraging social distancing and mask wearing at the sale. Our long standing meal unfortunately will be missed this year but it will be back next year with a full spread I am sure.

Mark your calendars for Nov 20 to come to the 40th annual Pembina Triangle Simmental sale at the ~~Cypress River~~ **Killarney Auction Market**. Make it one to remember.

**Darryl Perkin, President 204-534-8317**

## Welcome to the 40th Annual Pembina Triangle sale

As we gear up for the 2020 fall sales run the excitement and enthusiasm is always at a high with this group of PTSA breeders. First and foremost, the sales crew and staff here at Transcon would like to thank the breeders, buyers and the facilities that host these great events for really stepping up and helping us all get through one of the craziest bull sale seasons to date.

Make the 40th Annual Pembina Triangle Sale your one stop shop for Red and Black Purebreds and Fullblood/Fleckvieh females.

The anticipation of the matings on the bred heifers is to clip a substantial coupon on their first calf. Also the opens deserve not to be overlooked. They are impressive and from the top cut of their pens.

As I tour through the respective pastures of each individual breeding operation, they all have one common goal. That is to bring their top end females that are functional and right for the times.

The group of bred heifers on offer are as powerful as you will find. Females that have thickness yet maintain some style and are bred to some of the industry's top sires. The very select group of open heifers come right from the top end of each breeder's respective pen. There are some show stoppers in here that could hit the show road and be very competitive.

I always find it interesting traveling around how many breeders point out and say, "I bought her at the PTSA sale". The sale has become very high on Simmental breeder's lists as the place to source high-quality breeding females that go on and work. The high rate of return customers will attest to this.

We look forward to seeing you in ~~Cypress River~~ **Killarney** on Friday November 20th. In the event you are unable to attend the sale, as always we are here to assist with our highly reputable order buying services. Give any one of us a call as our phones are always on.

Darren Paget

Transcon Livestock Corp.



**Darren Paget**  
403 323-3985

[www.transconlivestock.com](http://www.transconlivestock.com)

Professionally Managed by

**TRANSCON**  
Livestock Corp.

[www.transconlivestock.com](http://www.transconlivestock.com)  
email: [office.transconlivestock@gmail.com](mailto:office.transconlivestock@gmail.com)  
Phone: 403 638-9377 Fax: 403 206-7786  
Box 300, Sundre, AB T0M1X0



**Jay Good**  
403 556-5563



**Glenn Norton**  
780 542-0634



**Cody Haney**  
403 559-8809



## Triple R Simmentals

**Rick Dequier**

Roland & Yvonne Dequier

Darrell, Jacquie, & Janessa Warkentin

**Rick cell: 204 771-0280**

Email: [rdequier@westmansteel.ca](mailto:rdequier@westmansteel.ca)

Website: [www.triplersimmentals.wix.com/tripler](http://www.triplersimmentals.wix.com/tripler)

Welcome to the 40th Pembina Triangle Simmental Sale, a reason to celebrate even under these very trying times. We are very proud of this year's offering

and believe we have a very uniform set for you to evaluate. Our females are bred early to easy calving, industry leading service sires that will quickly give you your return of investment. In fact, in the past two years alone two females we sold through this sale have just done that and then some, a \$17,000 bull calf for Triangle 33 and a \$50,000 bull calf for LaBatte Simmentals.

As in the past, we welcome all visitors to view the cattle before the sale. We would love to give you the tour and talk cattle.

Sincerely

Rick Dequier



**\$8,750.00**

**7**

### TRI-R MS GOSSIP GIRL 34G

**POLLED PUREBRED**

PG1267014

RXR 34G

23 January 2019

CDI AUTHORITY 77X  
BOUNDARY ASTUTE 4C  
KIMLAKE MARIE 840U

KWA FLYF RED MOUNTAIN 16Z  
OAKVIEW CASEY 38C  
OAKVIEW MISS ADELLE 278A

NF TRUMP S582  
CDI MS CROCKET 88T  
TNT TOP GUN R244  
KIMLAKE MARIE 342N  
IPU RED WESTERN 49X  
KWA MS ROCK 14X  
IPU ROUGHRIDER 2T  
KOP MS KODIAK 64U

HOMO POLLED.

Our feature bred heifer out of the high selling female from the 2016 PTSA sale. We fell in love with her Red Mountain dam when we first saw her and she has not disappointed us since. 34G has a tremendous quarter, tons of top and middle in a soggy, loose hided package, and these comments are exactly what Oakview used to describe the mother to this female four years ago. Bred early to Muirheads Triple Play 28E, the high selling calving ease bull that we purchased in partnership with Perkin Land & Cattle.

*Triple R Simmentals*

BW: 98. adjWW: 630. adjYW: 894. EPDs: 5.4 4.9 74.8 115.6 25.2 -0.6 62.6  
Bred Apr 05 to Muirheads Triple Play 28E PG1222865. No exposure.

## TRI-R MS GRACIE 31G

BLACK POLLED PUREBRED  
BPG1266395  
RXR 31G  
19 January 2019

Muirhead Triple Play 28E



2



**\$5,000.00**

*Triple R Simmentals*

LFE VIPER 455U  
NCB COBRA 47Y  
NCB MISS DREAM 22T

MRL MISSILE 138C  
MRL MISS 7306E  
MRL MISS 4472B

TNT TOP GUN R244  
LFE CHARO 56K  
CNS DREAM ON L186  
NUG SANDY 506R  
COME AS U R RED ROCKET  
MRL MISS 2423Z  
TNT POWER SURGE T404  
GLS MISS BOO "D" LICIOUS

BW: 74. adjWW: 636. adjYW: 886. EPDs: 9.9 1.2 77.4 109.4 29.5 5.7 68.2

Bred May 07 to Muirheads Triple Play 28E PG1222865. No exposure.

HOMO POLLED.

A moderate framed, super stout Cobra daughter out of a gorgeous, easy doing, first calf MRL Missile 138C daughter. 31G is the carbon copy of her mother and is already setting up a beautiful udder. Bred to Muirhead Triple Play 28E, our calving ease specialist whose first calf crop came super easy and we have several top prospects in the bull and replacement heifer pen.

## TRI-R MS GYPSY 3G

BLACK POLLED PUREBRED  
BPG1263530

RXR 3G

01 January 2019

LFE VIPER 455U  
NCB COBRA 47Y  
NCB MISS DREAM 22T

RED BARON HR P101  
TRI-R MS X-TRAVAGANCE 50X  
KWD MS RYDER 1L

TNT TOP GUN R244  
LFE CHARO 56K  
CNS DREAM ON L186  
NUG SANDY 506R  
CNS DREAM ON L186  
HS REFLECTIONS J34  
RED RYDER  
WIN DEE ACRES JASMINE 27J

BW: 76. adjWW: 683. adjYW: 995. EPDs: 13.4 0.1 76.2 113.4 31.5 10.3 69.6

Bred AI Mar 31 to SVS Brooks 669D PG1168724. No exposure.

HOMO POLLED.

A stylish Cobra daughter out of our most consistent cow family – KWD Ms Ryder 1L. This is the first female we sell from the Red Baron 1L daughter, RXR 50X. As you can see from her EPDs, a nice combination of calving ease and strong maternal genetics. Bred early to SVS Brooks 669D.



3

**\$3,500.00**

*Triple R Simmentals*

## TRI-R MS GUMDROP 9G

BLACK POLLED PUREBRED  
BPG1263756

RXR 9G

02 January 2019

REMINGTONSECRETWEAPON185X  
SSC SHELL SHOCKED 44B  
LAZY H SHEZ TOO COOL W58

LFE THE RIDDLER 323B  
TRI-R MS EYE CANDY 3E  
LFE BS HEAVEN SENT 89A

GWS EBONYS TRADEMARK 6N  
AUBREYS BLACKBLAZE II 5T  
CNS DREAM ON L186  
SS/REW TOO COOL S365  
LFE GOTHAM 819Y  
LFE BS CHARO 23Y  
3D BLK FULL THROTTLE 483X  
LFE HEAVEN SENT 30X

BW: 86. adjWW: 706. adjYW: 992. EPDs: 13.7 1.4 76.0 114.1 19.9 9.3 57.9

Bred AI Apr 01 to SVS Brooks 669D PG1168724. No exposure.

HOMO POLLED.

A big barreled, broody female with a stacked pedigree; her mother is an embryo calf – LFE Riddler out of the LFE Heaven Sent 30X cow family. Take advantage of her mating to SVS Brooks 669D, the calving ease MRL Red Whisky son as his service is a rarity and somewhat exclusive.



4

**\$4,200.00**

*Triple R Simmentals*



## TRI-R MS GRACELAND 7G

BLACK POLLED PUREBRED  
BPG1263753  
RXR 7G  
02 January 2019

WS Stepping Stone B44

**\$5,000.00**

5



*Triple R Simmentals*

EGC MONEYSTRIPE 82A  
NAC BLACKTIE 31E  
X-T BREATH TAKER 20B

MRL STERLING BLACK 138Z  
TRI-R MS DYNASTY 1D  
JONESYS MISS RED BULL 80Y

BW: 80. adjWW: 667. adjYW: 953. EPDs: 8.0 2.6 71.4 111.8 26.4 4.5 62.1

HARVIE JDF WALLBANGER111X  
EGC MS 105S  
WHEATLAND TERMINATOR 202Z  
X-T BLACK FORCE 20X  
LCHMN BRIGHT LIGHT L122L  
MRL MISS 403X  
KNK/CRSR RED BULL 53T  
WGAJ MS BLACK NIKI 8N

Bred AI Mar 31 to WS Stepping Stone B44 BPRS1166411. No exposure.

HOMO POLLED.

Our powerhouse of the pen with tremendous length of body out of our main herd sire NAC Blacktie 31E. This big volume female has all the makings to be an excellent contributor to her new owner. We could not be happier with the Blacktie progeny thus far as they are all stamped the same – broody, deep chested and very eye appealing. Bred early to Stepping Stone.



**\$4,000.00**

*Triple R Simmentals*

6

## TRI-R MS GRASSIE 49G

BLACK POLLED PUREBRED  
BPG1272654

RXR 49G

15 March 2019

EGC MONEYSTRIPE 82A  
NAC BLACKTIE 31E  
X-T BREATH TAKER 20B

MRL DISCOVERY 21A  
TRI-R MS ENDLESS LOVE 5E  
TRI-R MS BLACK VELVET 20Y

HARVIE JDF WALLBANGER111X  
EGC MS 105S  
WHEATLAND TERMINATOR 202Z  
X-T BLACK FORCE 20X  
MRL INTEGRITY 76Y  
TSN MS EDITION 55W  
R PLUS BLACKOUT  
MRL MISS 552U

BW: 90. adjWW: 730. adjYW: 944. EPDs: 3.6 3.6 77.4 117.7 24.4 0.1 63.1

Bred Apr 26 to Muirheads Triple Play 28E PG1222865. No exposure.

HOMO POLLED/HOMO BLACK. The youngest heifer in our offering, 49G is blaze faced and traces back to one of the strongest cow families in our herd. A heifer's first calf that was born two months after the rest of the pen but has always kept pace. We have a full sister in this year's heifer pen, both stamped with the trademark Blacktie characteristics. Bred to Muirheads Triple Play 28E for a February calf.



**\$3,750.00**

*Triple R Simmentals*

7

## TRI-R MS GEORGETTE 42G

BLACK POLLED PUREBRED  
BPG1269038

RXR 42G

06 February 2019

REMINGTON LOCK N LOAD 54U  
WINC LIVE AMMO 420B  
RCFS SWEET TREAT

WLB EIGHT BALL 377W 382Y  
SILVERLAKE CHLOE 44C  
ERIXON LADY 5W

REMINGTON ON TARGET 2S  
BAR 15 MISS KNIGHT78E-51G  
R&R WAREHOUSE K609  
TRIPLE C BEAUTY J31C  
WLB ROUGHNECK 366R 377W  
WAD 462P LUCY 350S  
REMINGTON RED LABEL HR  
ERIXON LADY 8T

BW: 94. adjWW: 706. adjYW: 912. EPDs: 7.4 3.3 76.9 113.0 20.9 6.1 59.4

Bred Apr 26 to Muirheads Triple Play 28E PG1222865. No exposure.

A bigger framed heifer with plenty of substance and eye appeal. Her mother was one of the high selling females through this sale and has been an excellent producer for us. 42G is setting up a very good udder and is bred to Muirheads Triple Play 28E.



## Bert's NR Simmentals

Norbert, Pam, Sam & Nathan de Rocquigny

Haywood, MB

204 745-7930 (Norbert's cell)

Website: [www.BertsNRSimmentals.com](http://www.BertsNRSimmentals.com)

Facebook: [www.facebook.com/BertsNRSimmentals](http://www.facebook.com/BertsNRSimmentals)

*Welcome to PTSA's 40th Anniversary Sale!*



We would like to extend a big Thank You to all those buyers and bidders who have supported our program in the past.

We are excited about this group of heifers. With the ability for things to change very quickly, we at Bert's NR Simmentals welcome those to stop in at the farm anytime for a tour and view our consignments. We will also have videos done on the heifers that will be available early November for viewing.

And as always do not hesitate to give me a call on my cell with any questions!



## BERTS MS GOERGIA 24G

BLACK POLLED PUREBRED

BPG1285126

NRD 24G

19 January 2019

LFE POKER FACE 399Z

LFE STYLE 363B

LFE BS CHARO 127Z

DRAKE POKER FACE 2X

LFE BS KATARINA 146X

LFE PUNK 407U

KLC MISS RIGHT MOVE 307N

CG TRACKER 45T

MUIRHEADS JEWEL 140T

KENCOMF POWERLINE 204L

KWD MS RYDER 1L

BW: 77. adjWW: 621. adjYW: 903. EPDs: 9.7 3.1 75.4 121.0 25.6 6.2 63.3

Bred AI April 02 to LFE Nighthawk 3013D BPG1204539.

A moderate framed, blaze face Style daughter. Her Tracker mother goes back to a very good cow family, and she has an impressive looking Tycoon bull calf in our bull pen for next spring. Homo Polled.



8

**\$4,500.00**

*Bert's NR Simmentals*

## BERTS MS GEISHA 16G

BLACK POLLED PUREBRED

BPG1285109

NRD 16G

14 January 2019

LFE VIPER 455U

NCB COBRA 47Y

NCB MISS DREAM 22T

TNT TOP GUN R244

LFE CHARO 56K

CNS DREAM ON L186

NUG SANDY 506R

LFE STRAIT UP 454W

WFL MS BLACK FLASH 8068U

WXR REDPATHS DOUBLE XL65X

SBSF MS ACCELERATOR 2Y

BW: 82. adjWW: 636. adjYW: 810. EPDs: 12.3 1.5 79.7 115.2 25.7 7.4 65.6

Bred AI April 02 to Hart State of War 056C BPG1180101.

Here is a stylish Cobra heifer with good neck extension. She is setting up a beautiful udder.



9

**\$3,500.00**

*Bert's NR Simmentals*

*Selling choice*



**\$5,250.00**

*Bert's NR Simmentals*

**10A**

**BERTS MS FRENCHY 51F**

BLACK POLLED PUREBRED

BPTG1285153

NRD 51F

12 September 2018

BW: 108. actYW: 960. EPDs: 3.6 5.9 83.6 119.6 26.4 0.8 68.2

Bred AI April 05 to CCLT Alliance 91C BPG1214539.

HART GOOD TIME W223  
WLB STOCKMAN 420B

WLB 156S BELLE 3556X

LFE BS LEWIS 322U

BLCC MISS STUBBY 343A

BLCC MISS 230R

DILLONS IN TIME  
HART LADY CONTENDER T227  
IPU BLACK LABEL 156S  
DCR MS 299 DEST L205  
R PLUS BLACKEDGE  
LFE BS MS ARNOLD 135S  
IPU RED NUGGET 132N  
BLCC MISS 8N

Being the 40th Anniversary PTSA Sale, thought we would try something new to us at Bert's NR Simmentals. We are offering choice of these two tanky, extra age beef machines. Both heifers are extremely deep-bodied and it is easy to appreciate their sheer power, growth, and strength throughout. With already two daughters working in our herd, it was an easy decision to let one of these go for the PTSA's 40th anniversary sale. My pick is 51F. Pam's pick is 56F. So, you come and pick the heifer you want. I am sure you will like these two heifers too!



**10B**

*Bert's NR Simmentals*

**BERTS MS FRANCE 56F**

BLACK POLLED PUREBRED

BPG1285156

NRD 56F

24 September 2018

BW: 104. actYW: 915. EPDs: 5.0 5.3 88.3 121.6 22.2 -1.0 66.4

Bred AI April 05 to Hart State of War 056C BPG1180101.

COME AS U R RED ROCKET  
MRL MISSILE 138C

MRL MISS 2423Z

LFE BS LEWIS 322U

BLCC MISS STUBBY 343A

BLCC MISS 230R

MRL 130Y  
MISS XCITING 14X  
LFE BUNDI 300X  
MRL MISS 493U  
R PLUS BLACKEDGE  
LFE BS MS ARNOLD 135S  
IPU RED NUGGET 132N  
BLCC MISS 8N



**\$8,250.00**

*Bert's NR Simmentals*



WFL Westcott 24C

## BERTS MS GUINEVERE 4G

POLLED PUREBRED  
PG1279104

NRD 4G

07 January 2019

Bred April 21 to Wheatland Front Runner 896F PG1270196.

Once again, just like last year, our red feature is a Westcott female. I can write an essay on this heifer, but the truth is the picture tells you everything! We calved out a group of Westcott heifers this spring and they are impressive. NRD 4G will be the same. No guess work here. A full sib sold to McCormack Family Ranch last fall.

TNT 90 PROOF Z401  
WFL WESTCOTT 24C  
WFL SWEET LICIOUS 1044X

SVS SCOUT 25X  
SUNNY VALLEY CARRIE 3Z  
SUNNY VALLEY CARRIE 16X

DCR MR MOON SHINE X102  
TNT MISS S17  
R PLUS REDGE 8018U  
WFL RED LICIOUS  
WHEATLAND BULL 738T  
3D MISS RED NOREMAC 494U  
MRL RED FORCE 12U  
SUNNY VALLEY CARRIE 50U

BW: 92. adjWW: 623. adjYW: 900. EPDs: 5.9 4.7 93.2 142.6 23.4 0.0 70.0

## BERTS MS GENE 3G

POLLED PUREBRED  
PG1279103

NRD 3G

07 January 2019

KWA FLYF RED MOUNTAIN 16Z  
HARVIE RED SUMMIT 54B  
HARVIE DAKOTA ROSE 11Z

KWA CHAKOTA 374A  
BERTS MS CHAMPAGNE 52C  
BERTS MS CUB 57X

IPU RED WESTERN 49X  
KWA MS ROCK 14X  
HARVIE JDF WALLBANGER111X  
WS DAKOTA ROSE M86  
IPU RED CHAKOTA 18Y  
TESS MS RED 143T  
WHEATLAND RED TEDDY 457P  
BLUERIDGE MISS 33P

BW: 82. adjWW: 616. adjYW: 814. EPDs: 8.4 2.3 78.8 120.3 30.3 5.4 69.7  
Bred AI March 28 to Wheatland Front Runner 896F PG1270196.

A nice, lighter colored Summit female. A full sib sold to our neighbors Massinon Farms. Also bred early to Front Runner. Homo Polled.



**\$3,250.00**

*Bert's NR Simmentals*



## Oakview Simmentals

RR2, Box 37, Darlingford, MB R0G 0L0

oakviewsimmentals@inethome.ca

www.oakviewsimmentals.com

Todd: 204-823-1434

Danna: 204-242-4522

### Welcome to the 40th edition of the Pembina Triangle Simmental Association Sale

What a year it has been! With all the uncertainty in the world right now one thing has remained the same; cattle producers are forging ahead and still seeking out quality genetics for their herds.

We encourage everyone to come to the farm prior to the sale and check the heifers out first hand in the event that you may not be able to attend the sale in person. We also plan to video the heifers and will have those available for at home viewing.

We thank all our past buyers for their continued support and confidence in our program and wish you all the best as you wind up your fall and prepare for 2021.



**\$5,500.00**

*Oakview Simmentals*

### OAKVIEW GRAFFITI 369G

FULLBLOOD

T1287313

OVS 369G

23 January 2019

Oakview Miss Sadie 20S

BLCC MR ADONIS 30X  
SOUTHSEVEN MR ADONIS 96Z  
SOUTH SEVEN MISS 70S

BAR 5 SA BENZ 415L  
OAKVIEW MISS SADIE 20S  
DLH MISS PIXIE 6P

BW: 110. actWW: 574. actYW: 832. EPDs: 6.8 4.3 68.8 97.6 41.9 6.5 76.3

DOUBLE BAR D ADONIS 603N  
BLCC MISS HOUSTON 144U  
SOUTH SEVEN NAVIGATOR 33N  
DFM ELMIRA 543E  
DAN-JACO BENZ 78  
WISP-WILL FIONA  
PRL HOUSTON 005H  
BLCC MISS LARA 69L

Bred AI April 05 to FGAF Guerrero 810Y P748277. Preg checked safe to AI. Exposed April 11 to May 20 to OVS Docker 182D 1188237.

Full Fleckvieh.

The writing is on the wall with Graffiti. This Sadie embryo is a heifer that has everything going for her. The maternal strength, fertility and longevity that runs through the Pixie line is what brings this heifer to the top. She is dark cherry red, heavily pigmented and smooth made. On the top side she is out of the highly sought after Adonis bull. Graffiti is destined to be a heavy milking, hard working cow that will produce thick, heavy bulls and functional front end females that will stand the test of time.



## OAKVIEW GEMMA 273G

FULLBLOOD  
PT1281851  
OVS 273G  
08 January 2019

FGAF Guerrero 810Y



Homozygous Polled Full Fleckvieh.

Oakview Gemma is a big, broody, full Fleck female with lots of potential. This homozygous polled female has extra length, great feet and is starting to lay down a beautiful udder. Fern is still walking the pastures here and holding an important spot in our flush program at almost 16 years old. Power and polled.



14

**\$7,000.00**

*Oakview Simmentals*

*Rolling Acres Red Fern*

DOUBLE BAR D LEGEND 87W  
FAIRVIEW ZEUS 57Z  
TRIPLE F MISS MARCUS 25U  
DORA LEE'S CLASSIC IMAGE  
ROLLING ACRES RED FERN  
DAYTON'S MISS POL BERND

FGAF MASAIL 307S  
DOUBLE BAR D BAVARIA 120T  
DFM MARCUS 14M  
SLS POL-LYNN 75P  
ABR SIR ARNOLDS IMAGE  
DORA LEE COUNTESS  
BERND  
DAYTON'S POL PETUNIA

BW: 90. actWW: 650. actYW: 1050. EPDs: 4.7 4.8 75.2 108.9 40.7 1.9 78.3  
Bred AI April 03 to FGAF Guerrero 810Y P748277. Preg checked safe to AI. Exposed April 11 to May 20 to OVS Docker 182D 1188237.

## OAKVIEW GEMMA 138G

POLLED PUREBRED  
PG1272579  
OVS 138G  
01 January 2019

*Mader Lieutenant 50E*



15

**\$6,000.00**

*Oakview Simmentals*

MADER WALK THIS WAY 224B  
MADER LIEUTENANT 50E  
MADER SHIVER 120C  
WHEATLAND CURRENT AFFAIR  
OAKVIEW DYNAMIC 331D  
OAKVIEW CHINA 94C

NCB COBRA 47Y  
MADER P IRON SUGAR 7X  
FBF1 COMBUSTIBLE  
JENI BLACK WHAMMY 1W  
STF ROYAL AFFAIR Z44M  
WHEATLAND LADY 742 T  
ERIXON WELLINGTON 133W  
OAKVIEW MISS SHEA 80S

BW: 66. actWW: 754. actYW: 944. EPDs: 9.9 1.5 86.0 124.7 30.3 6.8 73.3  
Bred AI April 03 to Remington Red Label HR PG634702-. Preg checked safe to AI.  
Exposed April 11 to May 20 to Current Affair PG1129672.

Here is the first Mader Lieutenant female that we have offered for sale, and we couldn't be happier with her. OVS 138G is a powerhouse of a female in a smooth made, stocky package. She boasts incredible spring of rib, a thick quarter and a huge top. She's a female with calving ease bred into her on both sides yet maintains the natural thickness and power to set her at the top of the pack. This heifer is out of a tremendous young cow that is quickly becoming a star. The calf she is carrying is one that will be highly anticipated. There aren't a lot of Red Labels being born these days.

## OAKVIEW GIGI 304G



**\$4,100.00**

**16**

*Oakview Simmentals*

**POLLED PUREBRED**  
**PG1281872**

**OVS 304G**

**11 January 2019**

STF ROYAL AFFAIR Z44M  
**WHEATLAND CURRENT AFFAIR**  
WHEATLAND LADY 742 T

CROSSROAD SOLUTION 446X  
**OAKVIEW CLARE 137C**  
WEEKS LADY 203A

REMINGTON LOCK N LOAD 54U  
STF ONYX 451W  
TNT TOP GUN R244  
WHEATLAND LADY 902J  
LFE BS LEWIS 322U  
IPU MS RED RIBEYE 179N  
ERIXON WELLINGTON 133W  
GCW URSULA 204U

BW: 92. actWW: 752. actYW: 988. EPDs: 9.2 4.3 79.9 120.7 30.9 6.5 70.9  
**Bred AI March 31 to Mader Lieutenant 50E PG1216413. Exposed April 11 to May 20 to same. Safe to exposure for middle of Feb calving.**

In just 3 short years in production OVS 137C has made quite a name for herself producing highly marketable calves; Gigi will be the 3rd to find her way through the sale ring, as she has a full brother walking the pastures at Griffin Farms, and a full sister at work at Caledonia Simmentals that sold through the 2018 Pembina Triangle sale. Consistency, thickness and rib shape are what we love about the Current Affair females, and Gigi displays all of these.

## OAKVIEW GLORIANA 243G



**\$4,000.00**

**17**

*Oakview Simmentals*

**POLLED PUREBRED**  
**PG1272630**

**OVS 243G**

**07 January 2019**

CDI AUTHORITY 77X  
**BOUNDARY ASTUTE 4C**  
KIMLAKE MARIE 840U

ERIXON TOP SHELF 77Y  
**OAKVIEW BLITZIN 150B**  
BDS UTOPIA 12U

NF TRUMP S582  
CDI MS CROCKET 88T  
TNT TOP GUN R244  
KIMLAKE MARIE 342N  
KOP CROSBY 137W  
ERIXON LADY 2P  
MUIRHEAD ONLINE 83S  
BDS MISS BLK DIAMOND 552R

BW: 90. actWW: 704. actYW: 910. EPDs: 5.3 4.0 75.1 110.4 24.7 -0.3 62.3  
**Bred AI April 4 to Mader Lieutenant 50E PG1216413. Exposed April 11 to May 20 to same. Preg checked safe to AI.**

Here is another first for us, the first Astute female to leave our farm. Gloriana is a moderate, smooth made female. OVS 150B is another one of those females that consistently brings home a top end calf. In just four years in production Gloriana will be the 4th calf off of OVS 150B to sell; a heifer to Lone Star Simmentals, and bulls to Richard Rey and Ian Wytinck.

## OAKVIEW GAIL 98G



**\$4,250.00**

**18**

*Oakview Simmentals*

**POLLED PUREBRED**  
**PG1272570**

**OVS 98G**

**01 January 2019**

MUIRHEADS LIGHTS OUT 4Y  
**WFL OUTLAW 4B**  
WFL SWEET LICIOUS 1044X

CROSSROAD SOLUTION 446X  
**OAKVIEW BETTY 193B**  
OAKVIEW ZIP 228Z

TCF/RCC TEMPTATION GJ640  
3D BLK MISS GOOD 211S  
R PLUS REDGE 8018U  
WFL RED LICIOUS  
LFE BS LEWIS 322U  
IPU MS RED RIBEYE 179N  
IPU RED SPECIALIST 70T  
MADER P CAMRY 148U

BW: 95. actWW: 780. actYW: 1040. EPDs: 11.8 2.5 76.6 115.2 27.9 4.7 66.2  
**Bred AI April 04 to Current Affair PG1129672. Exposed April 11 to May 20 to same. Preg checked safe to AI.**

Gail has always been a stand out heifer that we have admired. She is a very powerful heifer with tremendous depth of body and overall thickness. Watch for her maternal brother in our 2021 OPT Bull sale – he's going to turn some heads with his tremendous hind quarter! Gail just might be one of the last Outlaw females we part with as we no longer have him as a walking sire. Make no mistake – the Outlaw females work well, milk hard and are exceptional mothers.

## Twin Oak Livestock

Gary, Josie & Mary Jane Robinson

Box 412, Treherne, MB R0H 2V0

Ph: 204 723-2275 Cell: 204 526-5010

email: twinoaklimousin@hotmail.ca



We'd like to welcome you to the 40th Annual Pembina Triangle Simmental Association Female Sale. This is like no other year, HISTORY in the making. We've had to make many changes in our lifestyle to cope with challenges of COVID 19. As in difficult time everyone has to compromise and come up with new resourceful ways to venture on.

This year our family has decided to offer for your consideration 2 open females. So take the time to come on down to view our females and chat over a cup of coffee.

### TWL HOPE 338H

BLACK POLLED PUREBRED

BPG1312211

TWL 338H

14 January 2020

MADER UNDERDOG 90Y

TWL LEGENDARY 31B

CONRAY WILAYA

HILLS WILD CHILD

TWL HOT DAM

KOP MS WHEATIE 138W

MADER P BLK RANSOM 23U

MADER P BLACKGOLD 95S

ANKONIAN COLOSSAL S064

CONRAY JESSIE 3185

SUNNY VALLEY WILDCARD 10X

CONRAY WAVE

WHEATLAND BULL 655S

KOP MS NICOLE 60N

BW: 96. adjWW: 676. EPDs: 3.6 6.0 85.2 122.8 32.1 2.2 74.7

Open.

We had a difficult time letting this little sweetheart go into the sale. She's one of the top heifers in our heifer pen. Hope is a big, broody, black, fancy female with incredible eye appeal. She is sired by TWL Legendary 31B. We admire her natural thickness and depth of body that she exemplifies; she is truly following the footsteps of her dam's family, TWL Hot Dam 138C. Hot Dam is a maternal sister to Provincial Grand Champion TWL Ellie 138B. Hope will make an excellent 4-H heifer project.



Twin Oak Livestock

### TWL HADLEE 722H

BLACK POLLED PUREBRED

BPG1312208

TWL 722H

07 January 2020

MADER UNDERDOG 90Y

TWL LEGENDARY 31B

CONRAY WILAYA

HILLS WILD CHILD

TWL CASSIDY

KOPS MS BENGIE 72R

MADER P BLK RANSOM 23U

MADER P BLACKGOLD 95S

ANKONIAN COLOSSAL S064

CONRAY JESSIE 3185T

SUNNY VALLEY WILDCARD 10X

CONRAY WAVE

R PLUS 2169M

KOPS MS FREIGHTLINER 82N

BW: 98. adjWW: 668. EPDs: 5.8 4.7 77.8 115.1 35.7 2.5 74.6

Open.

Hadlee is a black, powerfully packed, moderate framed female. She has length of body, spring of rib and well-muscled hind quarter. Haylee is also sired by TWL Legendary and out of TWL Cassidy whom is a phenomenal female with excellent disposition, a flat floor udder with magnificent milking ability. The combination of this breeding will make her an excellent functioning female. This little gal will work in your breeding program.



Twin Oak Livestock

## Southam Simmentals

Rene Rouire, Sharon Southam & family

Box 91 Elm Creek, MB R0G 0N0

Phone: (204) 436-3013

Rene's Cell: 204 745-8508 Sharon's Cell: 204 745-7881

Email: rsrouire@mymts.net

Welcome to the 40th annual Pembina Triangle Simmental Association Sale. Thank you to all past customers - your support is sincerely appreciated.

Our collection of red bred heifers stem from two sire groups – a pair of MRL Western Force daughters and a trio of Oakview Dapper 55D gals.

Four heifers carry a natural service to WLB Gangster 539G – a Mar Mac Utah Whisky 52E son. Gangster 539G posts a balanced set of EPDs for calving ease and performance. We are looking forward to his 2021 calves and the impact he will have on our program.

We welcome inquiries and on farm, pre-sale appraisal of our offering.

**Mark the PTSA sale on your calendar.**

Rene, Sharon and Claire



**\$3,250.00**

**21**

Southam Simmentals

## SOUTHAM'S GABRIELLE 1G

POLLED PUREBRED

PG1264240

SOU 1G

01 January 2019

MRL 67X  
MRL WESTERN FORCE 251B  
MRL MISS 2543Z

KWA ROCK 140B  
SOUTHAM'S DENISE 40D  
SOUTHAM'S NIBS 11Z

MRL RED FORCE 12U  
IPU RED SATIN 177M  
IPU RED WESTERN 49X  
MRL MISS 212L  
KWA RED ROCK 5T  
KWA MS FORTUNE 72W  
KOP TOUCHDOWNSON 179X  
SOUTHAM'S TWIZZY

BW: 78. adjWW: 598. adjYW: 1022. EPDs: 12.0 0.6 66.2 103.4 30.2 8.4 63.3  
Exposed March 29 to May 27 to WLB Gangster 539G PG1288337. Observed bred April 1. Preg checked safe to observed service.

Astylish Western Force daughter brimming with femininity and eye appeal. Gabrielle 1G's young dam has anchored herself in our herd. She consistently produces top notch calves that find their way into the keeper pen. Gabrielle 1G possesses a set of highly maternal EPDs and should follow in her mother's footsteps. Look forward to a mid-January baby.



**\$3,900.00**

**22**

Southam Simmentals

## SOUTHAM'S GEMINI 5G

POLLED PUREBRED

PG1264551

SOU 5G

07 January 2019

MRL 67X  
MRL WESTERN FORCE 251B  
MRL MISS 2543Z

MAF RED RAMBO 131B  
RENDEZVOUS MS RAMBO 387E  
RENDEZVOUS MS KNIGHT 97C

MRL RED FORCE 12U  
IPU RED SATIN 177M  
IPU RED WESTERN 49X  
MRL MISS 212L  
IPU RED WESTERN 49X  
IPU MS. RED FORCE 157Z  
SKORS RED KNIGHT 164A  
RENDEZVOUSMSCAESAR 185A

BW: 84. adjWW: 614. adjYW: 1036. EPDs: 13.5 1.3 64.9 105.3 32.0 8.8 64.5  
Bred AI March 25 to WS Epic E152 PTG1237011. Exposed March 29 to May 27 to WLB Gangster 539G PG1288337. Preg checked safe to AI service.

Another highly maternal MRL Western Force daughter, Gemini 5G was not impressed with picture & video day! A long spined heifer yet still feminine in structure and appearance. Gemini 5G's frame disguises her abundant width and capacity – those valued qualities of a productive female. She would be a positive addition to your herd.

## SOUTHAM'S GISELLE 43G

POLLED PUREBRED

PG1268335

SOU 43G

31 January 2019

WHEATLAND CURRENT AFFAIR

OAKVIEW DAPPER 55D

OAKVIEW MISS AIMEE 55A

CHAMPS BRAVO

SOUTHAM'S CHAROLETTE 7C

SOUTHAM'S ABBY 32A

STF ROYAL AFFAIR Z44M

WHEATLAND LADY 742 T

MRL RED FORCE 12U

TRI-R MS ROYALTY 8Y

CHAMPS ROMANO

VIRGINIA POLL BARBI SUE

KOP TOUCHDOWNSON 179X

SIMMENTAL/CROSSBRED

BW: 86. adjWW: 587. adjYW: 963. EPDs: 8.7 1.7 61.0 86.8 29.1 5.4 59.6

Exposed March 29 to May 27 to WLB Gangster 539G PG1288337. Observed bred March 30. Preg checked safe to observed service.

A beautiful blazed face heifer with a splash of fullblood genetics in her pedigree. Giselle 43G is one of those females that makes one go back for a second look. A moderate framed, deep bodied heifer who displays the traits of a brood cow. Giselle 43G carries an early natural service to our new herd sire – WLB Gangster 539G. Be certain to appraise this quality female.



23

\$5,000.00

Southam Simmentals

## SOUTHAM'S GLADYS 45G

POLLED PUREBRED

PG1268561

SOU 45G

02 February 2019

WHEATLAND CURRENT AFFAIR

OAKVIEW DAPPER 55D

OAKVIEW MISS AIMEE 55A

TNT GUNNER N208

BOYNECREST MISS 113T 130W

BOYNECREST MISS 68M 113T

STF ROYAL AFFAIR Z44M

WHEATLAND LADY 742 T

MRL RED FORCE 12U

TRI-R MS ROYALTY 8Y

RC STINGER 072K

TNT MISS HONEY L9

MUIRHEAD'S KRAMER 19N

BOYNECREST 10B 68M

BW: 90. adjWW: 645. adjYW: 1069. EPDs: 9.2 2.9 68.4 96.3 29.7 7.2 63.9

Exposed March 29 to May 27 to WLB Gangster 539G PG1288337. Observed bred April 6. Preg checked safe to observed service.

A personal favorite! If cow family consistency ranks high in your books, Gladys 45G is your gal. Maternal siblings have been chosen for sales and have found new homes with Allan Lindal, Massinon Farms, J Bar K Farms and Joseph Upgang. Gladys 45G has the brood cow "look" with the added bonus of a laid back disposition. A heifer with a most promising future. Anticipate a mid-January arrival.



24

OUT

Southam Simmentals

## SOUTHAM'S GENEVIEVE 52G

POLLED PUREBRED

PG1270106

SOU 52G

16 February 2019

WHEATLAND CURRENT AFFAIR

OAKVIEW DAPPER 55D

OAKVIEW MISS AIMEE 55A

MAF RED RAMBO 131B

RENDEZVOUS MS RAMBO 352D

RENDEZVOUS SNUGGY 18B

STF ROYAL AFFAIR Z44M

WHEATLAND LADY 742 T

MRL RED FORCE 12U

TRI-R MS ROYALTY 8Y

IPU RED WESTERN 49X

IPU MS. RED FORCE 157Z

NUG SMUGGLER 296Y

RENDEZVOUSMS SUPREM 473X

BW: 100. adjWW: 595. adjYW: 997. EPDs: 6.3 4.9 62.0 91.8 32.9 5.0 62.9

Exposed March 29 to May 27 to WLB Gangster 539G PG1288337. Observed bred March 31. Preg checked safe to observed service.

A stocky Oakview Dapper daughter with the sweetest disposition. A compact, easy doing heifer like her mother, Genevieve 52G is a female we should be retaining for ourselves. Color, structure, pedigree – she has it all. Her Gangster 539G service adds to her value. Buy with confidence – she's a good one.



25

\$4,500.00

Southam Simmentals



## Delight Simmental

Gordon Delichte

Box 26, St Alphonse, MB R0K 1Z0

Ph: 204 836-2116 Cell: 204 526-7502 email: G.Delichte@gmail.com

Welcome to the 2020 edition of the PTSA sale. After offering only bred heifers for the last few years, I decided to offer 2 fullblood calves off the first calf crop of my 2 fullblood herdsires. Firstly, Virginia Cheevers 302F, the 2nd high seller in 2019 from Virginia Ranch. I sure like the results that he left this year. And off my home grown, scurred polled, calving ease herd bull, Delight Roland 64E. He is a smaller framed bull. His calves do come smaller. He is used to clean up most heifers after AI but I also used him on some of my larger framed cows and received some nice, middle of the road frame calves. Of the breds, there are 3 polled reds, and 1 fullblood. Two of the reds are bred to my new red herdsire Boon's Wolfwillow 31G, the high selling Simmental in the 2020 Transcon Advantage Bull Sale.

I have set up an Instagram account "delightsimmentals" and plan to post more pictures of my sale animals closer to sale day.



**\$3,400.00** 26

Delight Simmental

## DELIGHT ALLIASHA 65G

**POLLED PUREBRED**  
PG1321806

LITE 65G

20 January 2019

HARVIE JDF WALLBANGER111X  
**EGC ALLSTATE 147A**  
EGC MS MUCHMORE 72P

MAR MAC REVOLUTION 127C  
**DELIGHT ROBERTA 61E**  
DELIGHT MISS 61S

SHS ENTICER P1B  
JDF PEPSI 61U  
STF MUCH MORE K300  
EGC MS RED ROOKIE 56L  
IPU MARKSMAN 54A  
MAR MAC SOUTHERNBELLE 76Z  
DELIGHT SIR 115L  
DELIGHT COLLEEN 262G

BW: 88. actWW: 720. EPDs: 6.6 4.3 72.9 104.0 27.7 3.0 64.2

Exposed Apr 23 to July 31 to Boon's Wolfwillow 31G PG1304405. Preg tested Sept 17: 4.5 mths.



A double polled, red blazed, Allstate heifer that is larger framed with a deep body. She is bred to my new solid red, polled herdsire, Boon's Wolfwillow 31G. He was the high selling bull at the Advantage sale last April.

EGC Allstate 147A



**\$5,250.00** 27

Delight Simmental

Virginia Cheevers 302F

## DELIGHT CHELSEA 815H

**FULLBLOOD**  
1326165

LITE 815H Twin

01 February 2020

DOUBLE BAR D BANKER  
**VIRGINIA CHEEVERS 302F**  
VIRGINIA ABBY 302A

BLCC MR RENEGADE 87X  
**DELIGHT MS RENEGADE 915C**  
DELIGHT JULIETTE 915Y

MFI JEREMIAH 9022  
DOUBLE BAR D FEATHER 43W  
TTU CANYON  
VIRGINIA JUNI 65Y  
NCK RENEGADE 16R  
BLCC MISS EVEREST 179T  
WKF ROMEO 23P  
CHERRY CREEK LAUREN 15W

BW: 76. Oct 5/20 wt: 740. EPDs: 0.8 6.7 70.6 97.9 35.5 -1.9 70.8  
**Open.**

This heifer was born a twin and backwards but was raised as a single. Her twin sister was put onto another cow. I wanted to put in a daughter of my young herdsire, Virginia Cheevers, and chose the best looking one I could find, and there are several. She is deep, long and thick. She is Full Fleckvieh for those that are interested.



## DELIGHT JACKIE 64G

FULLBLOOD  
1321863

LITE 64G

13 February 2019

KOP MAXIMUS 151Y  
HOMESTEAD-T JAX 202B  
CHERRY CREEK LAUREN 15W

CHAMPS BRAVO  
DELIGHT MS BRAVO 64C  
SKYRIDGE BAMBI 4A

MFI GLADIATOR 116T  
KOP MS NORTH 726U  
EXODUS  
IPU MS RHONDA 81R  
CHAMPS ROMANO  
VIRGINIA POLL BARBI SUE  
KELLY'S SOLWAY ADONIS  
DELIGHT MISS SARGENT 36X

BW: 95. actWW: 730. EPDs: 8.7 3.3 68.7 95.4 37.7 5.0 72.1

Bred AI Apr 10 to WKF Romeo 23P P637758. Exposed May 31 to July 31 to Virginia Cheevers 302F 1230439. Preg tested Sept 17: 4.5 - 5 mths.

This heifer is a maternal sister to my herdsire Delight Roland 64E. She is a smaller framed fullblood daughter of Jax. She will be one of the easy keeping cows in your herd. She should be safe in calf to the polled fullblood Romeo bull.



**\$3,750.00**

*Delight Simmental*

## DELIGHT ALLIASHA 617G

POLLED PUREBRED  
PG1321865

LITE 617G

17 February 2019

HARVIE JDF WALLBANGER111X  
EGC ALLSTATE 147A  
EGC MS MUCHMORE 72P

BLCC MR RENEGADE 87X  
DELIGHT VERONICA 417Z  
DELIGHT MISS RIPTIDE 114T

SHS ENTICER P1B  
JDF PEPSI 61U  
STF MUCH MORE K300  
EGC MS RED ROOKIE 56L  
NCK RENEGADE 16R  
BLCC MISS EVEREST 179T  
WXR RIPTIDE 47R  
DELIGHT MISS 214H

BW: 115. actWW: 820. EPDs: 5.1 5.9 73.1 106.9 29.3 1.3 65.9

Exp. Apr 11 to July 31 to Boon's Wolfwillow 31G PG1304405.

Observed bred Apr 24. Preg tested Sept 17: 4.5 mths.

A good, larger framed, polled, red blaze heifer that should go on to be great cow. Bred to have a February baby by my new herdsire Boon's Wolfwillow 31G.

Boons Wolfwillow 31G



**\$3,250.00**

*Delight Simmental*

## DELIGHT ALLIASHA 62G

POLLED PUREBRED  
PG1322281

LITE 62G

07 April 2019

HARVIE JDF WALLBANGER111X  
EGC ALLSTATE 147A  
EGC MS MUCHMORE 72P

BLCC MR RENEGADE 87X  
DELIGHT MS RENEGADE 61A  
DELIGHT MISS 61S

SHS ENTICER P1B  
JDF PEPSI 61U  
STF MUCH MORE K300  
EGC MS RED ROOKIE 56L  
NCK RENEGADE 16R  
BLCC MISS EVEREST 179T  
DELIGHT SIR 115L  
DELIGHT COLLEEN 262G

BW: 105. actWW: 730.

EPDs: 6.3 4.8 70.8 102.7 28.0 1.7. 63.4

Exposed May 02 to July 31 to Delight Roland 64E S1212421.

Observed bred May 02. Preg tested Sept 17: 4.5 mths.

My youngest heifer on offer that is due to calve mid February to my calving ease herdsire Delight Roland 64E. This herdbull is a small framed bull with lots of calving ease bred in.

Delight Roland 64E



**\$3,250.00**

*Delight Simmental*

## DELIGHT ROXY 138H

FULLBLOOD  
1326164

LITE 138H

10 February 2020

PHS BANK ROLL 345B  
DELIGHT ROLAND 64E  
DELIGHT MS BRAVO 64C

OAKVIEW HUMMER 18Y  
DELIGHT MS HUMMER 238C  
DELIGHT MS RENEGADE 38Z

SIBELLE DIRTY HARRY 25Z  
PHS YUMA  
CHAMPS BRAVO  
SKYRIDGE BAMBI 4A  
BAR 5 SA HEMISPHERE 411R  
OAKVIEW MISS SANDY 18S  
BLCC MR RENEGADE 87X  
MSC SHEZZA TEN

BW: 86. Oct 5/20 wt: 680. EPDs: 6.7 4.9 69.8 100.5 37.1 2.3 71.9

Open.

I decided to enter a daughter of my calving ease herdbull, Delight Roland 64E. When put with some of my larger framed cows, I get these nice middle of the road calves. This girl is a high percentage Fleck fullblood that has length of body. And it looks like she will be easy keeping. The sire is a maternal brother to LITE 64G and the service sire of LITE 62G.



**\$2,750.00**

*Delight Simmental*

## Perkin Land & Cattle Co.



Darryl, Tanya, Liam & Ivy Perkin  
Box 138, Elgin, MB R0K 0T0  
Ph: 204 769-2159 Cell: 204 534-8137  
email: tanyabeech@msn.com  
email: darryl@perkinlandandcattle.com  
website: perkinlandandcattle.com



Welcome to the 40th PTSA sale. We love being part of this progressive bunch of breeders that come together each fall to put on this event. At PLCC we have again had a busy year with COWS, CROPS, and KIDS. I will be the first to admit it was nice having kids around the farm to do a few extra jobs this spring.

We have brought to you 4 heifers we are proud to consign this year. Make notice that each are either a direct daughter of IPU Hot Iron or are from Hot Iron mothers. This just shows what a good job 66Z has done for us, fertility and longevity.....in the cattle world those two things equal profit. They are all AI bred to industry leading calving ease sires that we feel brings value to these females. Please feel free to give us a call about these heifers or just to talk cattle.

Perkin Land and Cattle will be donating 1 - 250lb Smart Lic supplement tub to the Volume buyer.



**\$10,500.00**

Perkin Land & Cattle Co.

### PERKS BLACKGOLD 1510G

BLACK POLLED PUREBRED  
BPG1286065 PLCC 1510G

REMINGTON LOCK N LOAD 54U  
W/C LOADED UP 1119Y  
AUBREYS BLACK BLAZE III

IPU HOT IRON 66Z  
PERKS BLACKGOLD 610E  
PERKS BLACKGOLD 610A

BW: 72. actWW: 712. EPDs: 8.7 3.2 68.1 103.6 26.6 3.9 60.7

Bred AI April 20 to Wheatland Front Runner 896F PG1270196. Exposed May 1 to July 1 to Muirheads Triple Play 28E PG1222865. Preg checked safe.

12 February 2019  
REMINGTON ON TARGET 2S  
BAR 15 MISS KNIGHT78E-51G  
3C MACHO M450 BZ  
BLAZE IV 1P  
LFE HOT IRON 812W  
IPU 52N POCAHONTAS 215U  
R PLUS HARD ROCK 145X  
MADER P BLACKGOLD 110S



maternal sib

W/C Loaded Up 1119Y

Homo Polled and Hetero Black by parentage.

Here is a heifer that probably should have had a show career. She has stunning lines. A very feminine heifer with a clean chisel front that blends fluidly into a big ribbed, pear shaped middle. Her mother is one of our up and coming young cows with a no miss pedigree of Hot Iron and Hard Rock and her grand dam raised our high selling bull this spring. Don't miss this beauty. Bred Early to Wheatland Front Runner....you may have a sweet pair to show next summer.

## PERKS NINA 1015G

BLACK POLLED PUREBRED  
BPG1286072 PLCC 1015G

15 February 2019

LFE HOT IRON 812W  
IPU HOT IRON 66Z  
IPU 52N POCAHONTAS 215U

MJ BLACK IRON 108A  
PERKS NINA 315D  
PERKS NINA 115Y

LFE BS LEWIS 322U  
LFE BS BLACK BEAUTY 209S  
TNT ACCELERATOR S226  
IPU RED POCAHONTAS 52N  
SCISSORS IRONCLAD 9Y  
MMJJ RED BRANDY 67X  
CDI/PLCC DR. PHIL 145U  
PERKS NINA 715T

BW: 98. adjWW: 679. EPDs: 2.2 6.1 70.4 106.6 29.3 -1.6 64.5

Bred AI April 20 to Black Gold Approval 71E PG1221918. Preg checked safe.  
Exposed May 1 to July 1 to Muirheads Triple Play 28E PG1222865.

Hetero Black by parentage.

A really nice balanced baldy heifer. She has a nicely balanced structure, she is loose made and has loads of capacity. She could be the cornerstone to a black baldy program with 2 baldy parents. A lot of great female makers in this pedigree. Black Iron, Dr. Phil, and the great matron IPU Pochahontas 52N... we used IPU Hot Iron until he was seven, one of the very best and consistent bulls we have ever owned. We have many really good females in our herd now. Bred early to Black Gold Approval, wow, fantastic mating.



33

\$4,500.00

Perkin Land & Cattle Co.

maternal sib

## PERKS ROXY ROLLER 1735G

BLACK POLLED PUREBRED  
BPG1279471 PLCC 1735G

Twin 26 January 2019

LFE HOT IRON 812W  
IPU HOT IRON 66Z  
IPU 52N POCAHONTAS 215U

HSF HIGH ROLLER 12T  
BROKEN OAK ROXY ROLLER 6C  
PERKS ANGELINA 635A

LFE BS LEWIS 322U  
LFE BS BLACK BEAUTY 209S  
TNT ACCELERATOR S226  
IPU RED POCAHONTAS 52N  
TJ 57J THE GAMBLER  
HSF RED FORTUNES SIS 33  
WHEATLAND BULL 680S  
PERKS RACHEL 335W

BW: 74. actWW: 790. EPDs: 4.9 4.7 66.5 101.9 29.7 0.8 63.0

Bred AI April 23 to Wheatland Front Runner 896F PG1270196. Exposed May 1 to July 1 to Muirheads Triple Play 28E PG1222865. Preg checked safe.

Homo Polled and Hetero Black by parentage.

This heifer has brood cow written all over her. She has that maternal look that will make a great foundation cow. She is as long as a wet Wednesday and will have a perfect udder just like her mother. Bred to Wheatland Front Runner should be a great coupon to clip.



Wheatland Front Runner

34

\$3,500.00

Perkin Land & Cattle Co.

## PERKS AGNES 551G

POLLED PUREBRED  
PG1285725 PLCC 551G

03 February 2019

ZSL MR RED ALASKA 3B  
ZSL RIPCORDER 2E  
ZSL MISS LABEL 33X

IPU HOT IRON 66Z  
PERKS AGNES 151C  
PERKS AGNES 151Y

CROSSROAD WARDEN 36Z  
ZSL MISS L.WIRE 56Y  
REMINGTON RED LABEL HR  
ZSL MS IAN 84M  
LFE HOT IRON 812W  
IPU 52N POCAHONTAS 215U  
WHEATLAND BULL 786T  
KOP MS TRADEMARK 110W

BW: 86. adjWW: 688. EPDs: 3.8 4.8 73.4 110.7 31.6 2.4 68.3

Bred AI April 19 to Black Gold Approval 71E PG1221918. Preg checked safe.  
Exposed May 1 to July 1 to Muirheads Triple Play 28E PG1222865.

Homo Polled by parentage.

One red heifer that I am not happy to part with. She has been a pen favorite for quite some time. This is a powerful, long, well muscled heifer. These are the first of the Ripcord females and they are shaping up quite nicely. I am excited to see how they turn out. You will also notice that each heifer we have consigned has Hot Iron in their pedigree. What a bonus - good cows make good cows. She also goes back to the KOP cow we flushed successfully.....boom, double bonus. Bred early to Black Gold Approval should give you a nice red calf you and I will be proud of.



35

\$4,000.00

Perkin Land & Cattle Co.

maternal sib

## Handford Simmentals

Robert, Pam, Jason, Jayme & Riley Handford

Ph: 204-876-4658 Cell: 204-242-4359 Fax: 204-876-4620

Snowflake, MB

email: robhand1@hotmail.com

Welcome to the 40th Annual PTSA Sale. Congratulations to past and present breeders alike for continuing to keep this prestigious sale a mainstay in the Simmental breed. It's a privilege to be part of this sale with such a great group of breeders.



Handford Simmentals

## SRH TIMELESS 21H

BLACK POLLED PUREBRED  
BPG1319846

SRH 21H 22 January 2020

CNS DREAM ON L186  
HTP SVF IN DEW TIME  
HTP SVF HONEYDEW

RUST BULL 15D  
SRH MISS RUST 13F  
SRH MISS WEST 42Y

NICHOLS LEGACY G151  
CNS SHEEZA DREAM K107W  
GW LUCKY DICE 187H  
HC HONEYSUCKLE ROSE  
NUG ROYAL RED 324A  
RF SCREAM 215Z  
ANDI MR WESTWAY 113U  
ELLINGSON PREF BEEF U895

BW: 90. actWW: 685. EPDs: 10.6 2.3 79.2 111.0 21.5 5.4 61.1  
Open.

We all know how good In Dew Time daughters produce and I expect this one to be no different. Off a first calving Rust heifer that has really outdone herself. If this girl wasn't off a heifer she wouldn't be here. Hopefully I can get her to produce another one as good as this one.



Handford Simmentals

## SRH MISS RUST 34H

POLLED PUREBRED  
PG1319845

SRH 34H 27 January 2020

NUG ROYAL RED 324A  
RUST BULL 15D  
RF SCREAM 215Z

ELLINGSON BEEFMAKER Y113  
SRH SHANIA 22D  
JONESYS MS TAWNY 85T

LFE BLACK LAKOTA 385W  
TRIPILE C SMARTY PANTS R  
MR HOC BROKER  
RF SCREAM 39X  
WS BEEF MAKER R13  
ELLINGSON MS GUNNER U853  
WGAJ FIGURES IT OUT506M  
JONESY'S ROSEBUD 84R

BW: 81. actWW: 661. EPDs: 9.0 2.3 85.0 121.3 25.4 6.8 67.9  
Open.

If this girl turns out like her mother and grandmother her new owners are going to be very happy. Shania 22D is a big bodied, good uddered, young cow we have huge expectations of. The grandmother, Jonesys 85T, has been a solid producer for us and is still going strong. We calved the first Rust daughters this year and they are doing an impressive job raising their calves. This red Rust daughter has a cool blaze only adding to her value. Buy with confidence.

## SRH HALO 50H

BLACK POLLED PUREBRED

BPTG1322147

SRH 50H

02 February 2020

WFL WESTCOTT 24C

RF CAPACITY 742E

RF FAMOUS 409B

HART ALL IN W382

BLACKSAND SADIE 4Z

BLACKSAND LINETTE 854U

TNT 90 PROOF Z401

WFL SWEET LICIOUS 1044X

SVS CAPTAIN MORGAN 11Z

RF FAMOUS 127Y

SAS T101 SWEET MEAT

HART LADY LOCATOR P325

SPRINGCREEK LINER 104S

BLACKSAND SADIE 22206S

BW: 90. adjWW: 711. EPDs: 9.2 3.2 85.1 125.6 25.0 3.9 67.6

Open.

This Capacity-Sadie heifer is everything we had hoped for. She is a long, deep bodied calf with style to burn. Lots of performance and muscle in this girl. The kind that raise herd bulls. I expect we'll be hearing lots from her in the future.



Handford Simmentals

## Homestead-T Simmentals

Marcel, Aline Theroux and Sons

Box 215, Notre-Dame-de-Lourdes, MB R0G 1M0

Ph: 204-248-2008 Cell: 204-750-1147

David's Cell: 204-750-1039

email: matheroux@hotmail.com

donna email: dreid\_old@yahoo.com



Hello folks, and welcome to the 2020 edition of the Pembina Triangle sale. We took to task bringing a strong variety of bred heifers this sale year, comprising of three Full Fleckviehs and one polled Red that are safe in calf to some very interesting genetics. Our heifers on offer have not been pushed, they are athletic and structurally sound to re-breed. Our heifers

have a focus on mothering ability, longevity, milk and a quiet nature which will sustain their place in a good working herd.

We hope our focus will allow you, the buyer, the chance to pick out a heifer to accommodate various needs to your herd. As always, feel free to contact us for any questions you may have on our program, or inform us of yours, so we can work to match the right candidate for you come sale day. The coffee is always on. Also, don't hesitate to contact any member of the sales management team for any assistance you may need in regard to the sale.

The Theroux family

## HOMESTEAD-T MISS GEM-STAR 709G

POLLED PUREBRED

PG1306004

AMT 709G

01 January 2019

TH BLACK EDITION 8R

KRGS PWK LIMITED EDITION 1C

MRL MISS 3323A

CMS SIMMER 217Z

HOMESTEAD-T MISS 531E

HOMESTEAD-T MISS 76Z

TNT DYNAMITE BLACK L137

BBN MS BLACK LADY 28H

MRL 91Y

MRL MISS 863S

LBR CROCKET R81

ERIXON LADY 202S

LOCHWOOD EVER 22W

RENDEZVOUS 613K

BW: 80. EPDs: 2.9 3.3 62.4 87.5 31.7 -2.3 62.9

Observed bred May 2 to Sunville Dakota 35D 1193534. No exposure.

Star is a very easy fleshing heifer; moderate framed and has a surprisingly high milk EPD of 31.7. These Limited Edition heifers we have kept have calved and mothered very well, and produce lots of milk. As an added bonus, she is bred to our easy calving, easy fleshing, Full Fleck bull, Sunville Dakota, giving you a very marketable calf either way.



Homestead-T Simmentals



Homestead-T Simmentals

## HOMESTEAD-T MISS GLIMMER 706G

FULLBLOOD  
1306001

AMT 706G Twin

01 January 2019

SOUTHSEVEN MR ADONIS 96Z  
**BLACK GOLD WALLY 87B**  
MS BGS MALLY 38W

BLCC MR ADONIS 30X  
SOUTH SEVEN MISS 70S  
R-FIVE MALTESE  
MS BGS SISTLER 8S  
NAC UNION'S LEGACY 29L  
NORTHERN LIGHT MSMAGIC33J  
SHAWACRES MONSTER 26M  
MI MS MADONNA 8M

BW: 75. EPDs: 4.4 5.4 68.5 100.5 37.4 6.5 71.7

Bred AI April 15 to FGAF Guerrero 810Y P748277. No exposure.

Full Fleckvieh

Glimmer is an exceptionally feminine Full Fleck heifer bred early to FGAF Guerrero 810Y, the high-milking calving ease sire at Semex. Her dam is a very reliable, sure footed cow, sure to calve easy, milk hard, breed back early, and still maintain her condition.

**\$4,000.00**

**40**



Homestead-T Simmentals

## HOMESTEAD-T MS GANACHE FF 788G

FULLBLOOD  
1321831

AMT 788G

06 February 2019

BEECH BROS BOOSTER 52Y  
**SUNVILLE DAKOTA 35D**  
MFI HELGA 5005

SUNNY VALLEY UPGRADE 47U  
EAGLE-RIDGE 52P  
ANCHOR "T" SUPREME 39H  
MFI HELGA 3111  
BAR NONE MAXIMIZER  
BAR NONE FENELLA  
CEN LAREDO 519L  
IPU MS BERNADETTE 101K

BW: 105. EPDs: 5.5 5.4 67.4 103.7 42.8 6.3 76.5

Bred AI April 15 to FGAF Guerrero 810Y P748277. No exposure.

Full Fleckvieh.

From birth, this has been one of the most interesting heifers to watch develop. With Ganache's coloring, temperament, and size, she is a really tough one to part with. She is liver red, and as perfect as a rich Ganache poured over your dessert. This is the largest framed heifer we have on offer, and with a milk EPD of 42, she is a powerhouse cow in the making. You truly have to see her to believe her. She is bred early to FGAF Guerrero for a very exciting January calf! Ganache's Silverlake dam is a docile tank of a cow, with solid feet and legs.

**\$5,500.00**

**47**



Homestead-T Simmentals

## HOMESTEAD-T MISS GINA FF 793G

FULLBLOOD  
1321834

AMT 793G

07 February 2019

BEECH BROS BOOSTER 52Y  
**SUNVILLE DAKOTA 35D**  
MFI HELGA 5005

SUNNY VALLEY UPGRADE 47U  
EAGLE-RIDGE 52P  
ANCHOR "T" SUPREME 39H  
MFI HELGA 3111  
BBBG WRANGLER 3S  
FGAF ADRIA 126P  
ANCHOR "T" LEGEND 7H  
SHAWACRES KAMBO 43K

ALLM COLOSSAL 25U  
**TRI-R ALOHA 20A**  
TRI-R MARISA 33M

BW: 105. EPDs: 2.7 6.7 77.3 112.4 41.7 2.6 80.4

Observed bred May 18 to Homestead-T Gizmo 734G PG1303950.

Full Fleckvieh.

Miss Gina is a moderate framed, thick made heifer that goes back to ALLM Colossal through her Triple R dam we purchased here seven years ago. With her EPDs for growth and milk, she is definitely a heifer you don't want to pass over! Bred to our fancy made, red herdsire Gizmo. Her early February calf will have the zip to really get up and grow.

**\$3,750.00**

**42**



Homestead-T Gizmo 734G

## Twin Meadow Livestock Farms

Patrick & Tracey Wilcox

Box 531, Treherne, MB R0K 2V0

Ph: 204 723-2386 Cells: 204 526-7060 or 204 723-0029

email: patricktracey2010@hotmail.com



We would like to welcome you to the 40th Annual Pembina Triangle Sale. This year we are proud to bring you one bred heifer and two open heifer calves. With this year we haven't been able to show due to covid so our herd got to relax in pasture all summer long. We have brought you a fullblood bred that we have high hopes for as her full sib has done an amazing job on a heifer calf also in the sale. With summer going differently as normal we decided to also add a black open heifer from a foundation cow family.

We look forward to visiting with you at the sale and also feel free to stop by the farm. We would gladly show you around our herd and sale offerings. Please feel free to contact us, Transcon Livestock and Bohrsen Marketing if you have any questions on our consignments.

### TCW GEORGIE 51G

FULLBLOOD

1325188

TCW 51G

23 January 2019

ANCHOR "T" RUSTY 59G  
STARWEST POL BLUEPRINT  
PHS HOMOZYGOUS XCEPTIONAL

MFI JAHARI 5055  
RENDEZVOUS KANDIS 122Z  
RENDEZVOUS 54S

KLONDIKE GOLD RUSH 418B  
ANCHOR "T" HELGA 10Y  
CHAMPS BRAVO  
WCC WELLS' PLD TALULAH 7T  
SHAWACRES JAHARI 50L  
ANCHOR "T" KANDIS 57F  
MFI SUPREME 4037  
RENDEZVOUS 75P

BW: 102. Sept 7/19 wt: 735. Jan 6/20 wt: 1000.

EPDs: 8.3 4.7 76.5 111.4 40.2 4.8 78.5

Bred AI April 12 to Anchor D Outlook 1219254. No exposure. Preg checked safe to AI date.

Georgie is our first fullblood bred that we are offering out of our program. She is a moderate female with lots of depth of body and volume, like her dam. Georgie has a great udder started that continues to develop the closer she gets to calving the middle of January. This known cow family has tons of milk and produces top end females that we mostly retain in our herd. We matched Georgie with Anchor D Outlook which we feel will be an exciting calf come January. Check out what a full sib to Georgie produced this year as TCW Helena is also in this sale.



43

\$5,750.00

Twin Meadow Livestock Farms

### TCW HELENA 30H

FULLBLOOD

1303816

TCW 30H

09 January 2020

BLCC MR ADONIS 30X  
SOUTHSEVEN MR ADONIS 96Z  
SOUTH SEVEN MISS 70S

STARWEST POL BLUEPRINT  
TCW MISS FORTUNE 55F  
RENDEZVOUS KANDIS 122Z

DOUBLE BAR D ADONIS 603N  
BLCC MISS HOUSTON 144U  
SOUTH SEVEN NAVIGATOR 33N  
DFM ELMIRA 543E  
ANCHOR "T" RUSTY 59G  
PHSHOMOZYGOUSXCEPTIONAL  
MFI JAHARI 5055  
RENDEZVOUS 54S

BW: 99. EPDs: 6.3 5.9 76.6 111.4 40.4 4.8 78.7

Open.

Helena is a great fullblood open heifer that is off a first time calver that put everything in this heifer calf. Helena comes from a great cow family that goes back to our first fullblood, Rendezvous Kandis, which is also the dam of TCW Georgie, our bred in the sale. Helena is a moderate framed female with a great quarter and strong top. Helena is going to follow in her dam's footsteps by being a deep sided heifer with lots of volume and beautiful udder.



44

\$3,500.00

Twin Meadow Livestock Farms



*Twin Meadow Livestock Farms*

## TCW HAILEE 44H

BLACK POLLED PUREBRED  
BPG1303840

TCW 44H

v18 January 2020

TRIPLE C SINGLETARY S3H  
CCR COWBOY CUT 5048Z  
CCR MS 4045 TIME 7322T

TNT GUNNER N208  
TCW SHERRI 5B  
TCW RED SAPHIRE

HOOKS SHEAR FORCE 38K  
LUCAS JOSIE 19K  
HTP SVF IN DEW TIME  
CCR MS PRETTY 4045P  
RC STINGER 072K  
TNT MISS HONEY L9  
KENCO/MF POWERLINE 204L  
TCW RED RUBY 19N

BW: 106. EPDs: 5.9 5.8 88.3 124.9 29.7 4.2 73.9  
Open.

Hailee is one of our top black open heifer calves this year who comes from a foundation cow herd out of TCW Saphire. This heifer has lots of potential as she had a strong family of outstanding milking females with great body structure. Hailee is also out of CCR Cowboy Cut which we have used in the past with great success. Keep an eye out for Hailee if you're needing a show heifer or just to add a female to your herd.



## Wilcox Simmentals

Ernie, Betty, Anthony & Ariel Wilcox  
Box 22, Treherne, MB R0G 2V0  
Ph: 204 723-2735 Cell: 204 526-7183  
Anthony cell: 204 750-1658  
email: wilcox@wilcoxsimmentals.com  
website: www.wilcoxsimmentals.com



Welcome to the 40th Annual Pembina Triangle Sale. This is the 37th year we have been a part of the Pembina Triangle Group. We are consigning two open heifers as well as a bred heifer. A little history on the females in that the two red heifers go back to a cow we purchased as an open heifer in 1991 from Woodsong Farms and the black heifer goes back to an open heifer we purchased in 1992 from Win-Dee Acres Farm.

With the uncertainty that comes from Covid we will have videos done of our heifers that can be viewed on cattlevids.ca. We welcome anyone to the farm to check out our consignments beforehand.



*Wilcox Simmentals*

## WILC ROSE GIRL 65G

POLLED PUREBRED  
PG1321272

WILC 65G

22 February 2019

IPU RED WESTERN 49X  
MRL 69D  
MRL MISS 4473B

KSU MANHATTAN 38J  
WILC RED ROSE 8S  
WILC QUEENIE 29M

WS BEEF MAKER R13  
IPU 52N POCAHONTAS 215U  
TNT POWER SURGE T404  
GLS MISS BOO "D" LICIOUS  
BOZ REDCOAT  
MISS FUTURE K 23C  
NLC GOOD A NUFF 33G  
WILC PRINCESS 6K

BW: 90. adjWW: 684. adjYW: 1106. EPDs: 4.2 5.4 87.1 139.3 32.4 3.4 75.9  
Bred Al March 27 and April 15 to RUST HENN Rambler 6003 PTG1223176. PT safe to April 15 breeding.

Rose Girl is a deep body female and has great maternal backing as her dam, Red Rose, is a foundation cow in our herd. This is the first female to sell off the Red Rose cow as we have the other three daughters working in our herd. The mating to Rambler is very exciting as you can see a result of crossing him with Rose Girl's 1/4 sister in Lot 47, WILC 47H. Her sire, MRL 69D, has made great females with exceptional udders.

## WILC HOLLY 47H

POLLED PUREBRED  
PG1326118

WILC 47H

22 January 2020

WS PILGRIM H182U  
RUST HENN RAMBLER 6003  
KAPPES SADIE M166

HARVIE RED SUMMIT 54B  
WILC FERGIE 42F  
WILC RED ROSE 8S

CNS DREAM ON L186  
WS MARLA 276M  
PVF PREFERRED EDGE 717G  
KAPPES STOP LIGHT J35  
KWAFLYFRED MOUNTAIN 16Z  
HARVIE DAKOTA ROSE 11Z  
KSU MANHATTAN 38J  
WILC QUEENIE 29M

BW: 91. EPDs: 8.7 2.4 82.8 118.7 27.0 6.1 68.4

Open.

Holly is an attractive heifer that has a bright future. She checks off a lot of boxes. She's thick, deep, structurally correct and yet is still feminine. She comes from a first calf heifer that did an exceptional job. The females from this cow line all have beautiful udders.



47

\$3,500.00

Wilcox Simmentals

## WILC HATTIE 29H

BLACK POLLED PUREBRED  
BPG1326121

WILC 29H

09 January 2020

LFE BLOCKBUSTER 3011C  
WLB ENCORE 3011C 443F  
BERTS MS COORS LITE 24C

RF NITRO 219Z  
WILC BLK DENISE 23D  
DBS RAZZLE 2R

LFEBISSBLACKADVANCE426U  
LFE RS SHELBY 2120X  
MUIRHEADS LIGHTS OUT 4Y  
NSC 53W  
JF/AJE RENDITION 738T  
TLG FLIRTIN WITH YOU  
GFI MAGNUM K52  
WILC 1H

BW: 98. EPDs: 4.6 4.9 83.5 122.6 25.5 2.5 67.2

Open.

Hattie has good depth of body and natural thickness. Out of the high selling WLB Encore bull that we got an exclusive semen package on. We used him heavy the first year and we would call it a success as his calves have really impressed us. Her dam, Denise, is a good milking female that already has a good track record.



48

\$2,600.00

Wilcox Simmentals

## Thank you to our 2019 buyers:

Bergman Family Farm, Aaron Bergman, SK  
Bert's NR Simmentals, Norbert De Rocquigny, MB  
Big Sky Simmentals, Kinley Peters, MB  
Boundary Ranch, Sarah & Darby Delorme, SK  
City View Simmentals, Blaine Barnett, SK  
Cossette Simmentals, Cossette Louis-Rene, PQ  
Crowe Bros., Scott & Brent Crowe, MB  
Double Bar D Ranch, Ken & Richard Dimler, SK  
Ferme Gagnon Inc, Y & F Gagnon, PQ  
Hidden Hollow Farms \*, Peter & Marlene Gaunce, NB  
KK Farm \*, Keven Kreutner, MB  
Kreutner Farms Ltd \*, MB  
Labatte Simmentals \*, Barry H. LaBatte, SK  
Mader Ranches Inc., Randy & Ronda Mader, AB  
MJD Farm Inc. \*, MB  
Mountain Boyz Simmentals, Kyle/Eric Kostenchuk, MB  
Perkin Land & Cattle \*, Darryl & Tanya Perkin, MB  
Prairie Ridge Stock Farm, Scott & Jennifer Seward, MB

Rich-Mc Simmentals, Mylia/Jason Richards/Mclean, MB  
Schweitzer Simmentals / Mccoll \*, Cameron & Myrna Schweitzer, MB  
Silverlake Simmentals, Clint & Robert Marchant, MB  
Spring Creek Simmentals, Brian J. McCarthy, SK  
Triangle 33 Simmentals, Terry & Loretta Young, SK  
Triple R Simmentals, Darrell Warkentin, MB  
Valleyfield Simmentals, Larry J. Dyck, MB  
Van de Velde Cattle, Max Or Matthew Van de Velde, MB  
WLB Livestock, Bill & Nancy Biglieni, MB  
Allan Or Arik Lindal \*, MB  
Andre Mangin, MB  
Brock Sigurdson, MB  
Chris Penner \*, MB  
Corey Desrochers, MB  
Dana & Megan Johns \*, MB  
Robbie Milliken \*, MB  
\* denotes multiple purchases



## Dequier Cattle Company

Mike, Monique  
Pat, Kat, Ray Dequier  
Cell: 204-745-8750  
Home: 204-379-2113

Welcome once again to the PTSA sale!! Hope everyone is staying safe and learning to cope with these trying times.

We have three bred heifers for your appraisal this year, all of which are bred AI early with no exposure.

Hope to see you all sale day and if we can be of any assistance please don't hesitate to call.



## KWD GENIE 17G

BLACK POLLED PUREBRED

BPG1280696

KWD 17G

27 January 2019

LFE BOUNTY 3118Z  
WLB BOUNTY HUNTER 365C  
LFE BS MARY 26A

BBS TRUE JUSTICE B10  
KWD EZMA 14E  
WILC CAMARO 3C

LFE RANCHER 396U  
LFE BS KEEPSAKE 158S  
LFE THE DARK NIGHT 350U  
LFE BS MARY 25U  
BDV TRUE GRIT 11X  
BBS MISS JUSTICE Z7  
CMS SKYWALKER 305A  
WILC MS PORSCHA 8W

BW: 82. EPDs: 9.3 2.6 80.0 124.0 21.4 6.1 61.4

Bred AI Bred April 07 to Springcreek Lotto 52Y BPG736441. No exposure.

This is a real nice, angular heifer with a sweet front end along with an excellent depth of body. We've been using Bounty Hunter and True Justice on our heifers for a few years now, so this heifer has plenty of calving ease genetics within her. She is an easy keeping heifer with great genetics and bred early to a proven sire.



**\$3,600.00**

**49**

Dequier Cattle Co.

## KWD GINA 6G

BLACK POLLED PUREBRED

PENDING

KWD 6G

18 January 2019

LFE BOUNTY 3118Z  
WLB BOUNTY HUNTER 365C  
LFE BS MARY 26A

MRL 51C  
KWD ELLA 22E  
WILC BLACK ANGEL 19Z

LFE RANCHER 396U  
LFE BS KEEPSAKE 158S  
LFE THE DARK NIGHT 350U  
LFE BS MARY 25U  
MRL DISCOVERY 21A  
MRL MISS 689Y  
SHS ENTICER P1B  
WILC KARLIE 5S

BW: 72.

Bred AI April 03 to BBS True Justice B10 BPG1166269. No exposure.

These Bounty Hunter heifers are sweet females that will make great cows, off a real good 51C first calf heifer. The 51C daughters have nice tidy udders with great teat placement and 6G should follow in her mother's footsteps. Bred early to true Justice with no exposure.



**\$3,600.00**

**50**

Dequier Cattle Co.

## KWD GEMMA 7G

BLACK POLLED PUREBRED

PENDING

KWD 7G

18 January 2019

MRL DISCOVERY 21A

MRL 51C

MRL MISS 689Y

KWD LABEL 10U

KWD DESTINY 31D

KWD MS KING 23Y

MRL INTEGRITY 76Y

TSN MS EDITION 55W

TNT POWER SURGE T404

MRL MISS 688R

REMINGTON RED LABEL HR

KWD MS NOPHALT 18S

RC CLUB KING 040R

JONESYS MISS UNICE 12U

BW: 92.

Bred AI April 11 to BBS True Justice B10 BPG1166269. No exposure.

A thick, long bodied, easy keeping, blazed faced heifer off our proven herd bull MRL 51C. The 51C daughters make great mother cows and this heifer is no exception. There are 3 generations of blazed face on the dam's side for those who want that blazed look! Bred early to True Justice for calving ease and an early baby.



**\$4,500.00**

Dequier Cattle Co.



We at Van de Velde Cattle would like to welcome everyone to the 40th annual Pembina Triangle sale. We are thrilled to be back here again this year and feel we've brought two of the best bred heifers we have this year and a heifer calf that will work in any program. If you have any questions about the offering give us a call or stop in at any time, our fridge is always full.

## Van de Velde Cattle

Box 72, Mariapolis, MB R0K 1K0

Jared 204 825-4305 Max 204 825-4289

email: jared-vdv-8@hotmail.com



## VDV GISLA 64G

POLLED PUREBRED

PG1291041

VDV 64G

21 January 2019

MR CCF VISION

PWK MR VISION 64W 9E

BLCC MISS EDITION 64W

TNT TURBO U447

SKYRIDGE GISLA 64C

FTS GISLA 179R

MRNLCUPGRADEU8676

GCF MISS ELSA

TH BLACK EDITION 8R

BLCC MISS 116N

TNTACCELERATORS226

TNT MISS SADIE M68

BAR 5 SA EVAN 440L

JACK PINE ELSA 52F

BW: 92. EPDs: 6.6 4.0 69.4 97.9 23.8 4.1 58.5

Exposed May 4 to June 1 to VDV Turbo 63F PG1245166. Ultrasound June 5 - 30 days bred.

VDV Gisla 64G is a tank. She's very deep and is an easy doing heifer. She moves freely across the pen with her stride and still packs that extra punch. Look here if you're wanting a heifer to add those extra pounds at weaning time. She is bred to our walking bull VDV Turbo 63F for a mid February calf.



**\$4,000.00**

Van de Velde Cattle

## VDV DYNO 92G



**\$4,750.00**

**53**

*Van de Velde Cattle*

**POLLED PUREBRED**  
**PG1291072**

**VDV 92G**

**07 January 2019**

BAR 5 P SA EXPERT 826M  
**BAR 5 P SA EVOLUTION 418S**  
BAR 5 SA LADY SISKI 409M

KWA RED DYNO 68S  
**JONESYS MS DYNO 92 Z**  
WINDMILL NSREDHOT80S

ANDERLAND MATIAS-POENA  
TOVERBERG ERIKA  
ERICO PRIMAL  
AI-AI SISKI  
TNT DYNAMITE BLACK L137  
MISS ARNOLD J1014  
3D MR RED HOT 445N  
WINDMILL MS REDMAN 132P

BW: 98. EPDs: 2.7 5.2 76.4 109.9 31.9 1.0 70.1

**Bred AI April 10 to WS Epic E152 PTG1237011. No exposure.**

VDV Dyno 92G is another great red baldy bred heifer with a unique pedigree, being sired by the great Bar 5 P SA Evolution 418S. She has a great stride and moves out freely across the pen. Look forward to her calf sired by WS Epic E152.

## VDV LINER 90H



**\$2,750.00**

**54**

*Van de Velde Cattle*

**POLLED PUREBRED**  
**PG1325268**

**VDV 90H**

**07 January 2020**

MR TR HAMMER 308A ET  
**ROCK STAR CAPONE 5C**  
RF INTENSE 359A

SRH DREAM WEAVER 11Z  
**VDV LINER 90E**  
WINDMILL MS LINER 141W

MR NLC UPGRADE U8676  
SVF/HS EXPECTING A DREAM  
WHEATLAND STOUT 930W  
RF ELVIRA 24W  
LFE PLAYMAKER 447X  
PERKS MADGE 184T  
SPRINGCREEK LINER 91P  
WINDMILL MS REDMAN 32S

BW: 92. EPDs: 3.9 5.0 86.1 128.8 27.5 1.5 70.5

**Open.**

Here is a heifer calf that comes to you with lots of style and eye appeal. She's a daughter of the high selling Rock Star Capone 5C that sold for \$27,500 to Fallen Timber Farms. We used Rock Star Capone 5C lots in our AI program and have had great success with his progeny, with a heifer calf being sold to Ernie Wilcox in the 2018 PTSA sale.



**Clint Marchant & Andrea Bertholet**

Box 55, Cartwright, MB R0K 0L0

Clint cell: 204 825-8012 Andrea cell: 204 851-6087

email: adbertholet@hotmail.com



Welcome to the 40th Annual PTSA sale! It is an honor to continue to be a part of such a great group of Simmental breeders and work with the professional service of Transcon Livestock. This year we are offering a selection of open females and one outstanding bred female right off the top of our replacement pen! Feel free to give us a call, or better yet, stop in and check them out yourself! The coffee is always on! Videos will be available prior to the sale.

Clint, Andrea & Family

## SILVER LAKE GRACE 120G

POLLED PUREBRED  
PG1322107  
MARC 120G  
26 January 2019



**\$12,500.00**

*Silver Lake Farms*

LFE TRIUMPH 816A  
LFE NIGHT HAWK 3013D  
LFE RRS CIARA 2158Z

LFE BLACK RIDGELINE 536W  
BLCC MISS RIDGELINE 61B  
BLCC MISS TEDDY 163U

LFE BEER MONEY 811Y  
LFE BISS BS SUNSHINE 609X  
LFE PUNK 407U  
RRS OBSESSION 87T  
LFE MR LEWIS 462P  
LFE RS FIRSTBASE 29S  
WHEATLAND RED TEDDY 457P  
BLCC MISS RED LABEL 178S

Bred AI March 25 to Circle G Cash 1C PG1154428. No exposure. Ultrasounded safe to AI.

Here is a bred female that is the total package! Grace has been a standout since day one and we are excited and sad to be offering her for sale! She is tanky, moderate and has loads of style! She is very easy doing and has a fabulous temperament. Since halter breaking began, she has been Hadley's favorite heifer!

BW: 86. EPDs: 9.4 2.0 67.4 99.9 20.7 4.0 54.4

## SILVER LAKE HONEY 68H

BLACK POLLED PUREBRED  
BPG1322104  
MARC 68H  
14 January 2020



**\$5,000.00**

*Silver Lake Farms*

*Springcreek Duramax 41E*



LFE MCDAVID 413C  
SPRINGCREEK DURAMAX 41E  
SPRINGCREEK B GOLD 102Y

LFE BLACK LAKOTA 385W  
SWAN LAKE EXTRA STYLE 3 A  
CROSSROAD XTRA STYLE 176X

LFE GOTHAM 819Y  
LFE HEAVEN SENT 30X  
HART ALL IN W382  
SPRINGCREEK BLK SKY 100T  
R PLUS BLACKEDGE  
KJLI RAZZLE DAZZLE 628R  
LFE BS LEWIS 322U  
CROSSROAD UNICE 726U

MARC 8C maternal sister

Open.

Honey is a powerhouse of a female! She is long bodied, deep sided and soggy made. She is the kind that will raise some scale pushing calves. In early September she was our heavy weight at 834lbs. Her maternal sister sold to Double Bar D Farms.



BW: 91. Sept 8 WW: 834. EPDs: 4.5 6.0 94.9 143.4 23.5 0.3 71.0



**\$4,750.00** **57**

*Silver Lake Farms*

## SILVER LAKE HARPER 85H

FULLBLOOD  
1325794

MARC 85H

16 January 2020

LFS POL BALBOA 40U  
SILVERLAKE ROCKY 238C  
SILVERLAKE ISLA

CHERRY CREEK CANON 12Y  
SILVER LAKE VIENNA 36B  
SILVERLAKE VIENNA

DAYTON'S POL NEUMANN  
RRV NATALIE  
SILVERLAKE STORM  
K&S LUCKY LADY 11N  
CFFS ROMULUS 335S  
IPU MS RHONDA 81R  
BAR 5 SA EVAN 440L  
NEW TREND MARITA 12N

BW: 101. Sept 8 WW: 696. EPDs: 2.0 6.2 73.2 99.3 34.7 1.5 71.3  
Open.

Full Fleckvieh. Harper is a super soft made female that has loads of middle and capacity. She is sired by the Silverlake Rocky bull that is working at Bonchuk Farms and Bouchard Livestock.



*Silverlake Rocky 238C*



**\$3,100.00** **58**

*Silver Lake Farms*

## SILVER LAKE HOLLY 114H

FULLBLOOD  
1325792

MARC 114H

23 January 2020

BRINK BULLET PROOF A342  
BEE VAULT 167C  
EAGLE-RIDGE 67W

DOUBLE BAR D CHISHOLM 37A  
SILVERLAKE DIXIE CHICK 15D  
SILVERLAKE VIENNA

BRINK HUCKLEBERRY Y158  
BRINK R785  
VIRGINIAS TALLAHASSEE  
EAGLE-RIDGE 94N  
DOUBLE BAR D CHESAPEAKE  
DOUBLE BAR D BONNIE 332U  
BAR 5 SA EVAN 440L  
NEW TREND MARITA 12N

BW: 100. Sept 8 WW: 792. EPDs: 1.5 7.4 78.5 109.3 32.3 1.5 71.5  
Open.

Full Fleckvieh. Here is a heifer that has brood cow written all over her! She is long as a train, wide topped and displays excellent muscle definition. She is backed a great cow family going back to the Vienna 12W cow that is a powerhouse producer.



*Dam - Silverlake Dixie Chick 15D as a calf*



**\$3,500.00** **59**

*Silver Lake Farms*

## SILVER LAKE HALO 112H

POLLED PUREBRED  
PG1325789

MARC 112H

22 January 2020

WS ALL ABOARD B80  
WS EPIC E152  
WS MAJESTIC Z133

WLB BIG NORTHERN 52Z 4161D  
WLB 4161D NORA 301F  
SBSF COOKIE 8C

WS ALL-AROUND Z35  
WS LITTLE SISTER W37  
GW RED COAT 099TS  
WS MOTHER LODE W21  
MRL EL TIGRE 52Z  
WLB 156S BELLE 3552W  
HSF HIGH ROLLER 12T  
SBSF RED ROXY 61A

BW: 81. Sept 8 WW: 803. EPDs: 10.8 0.8 84.0 124.4 26.4 6.4 68.4  
Open.

Here is a dark red, smooth made heifer that has length of spine and style about her! Halo will be homo polled by pedigree.



*Dam - WLB 4161D Nora 301F*

**Skyridge Farms**  
 Gilles, Jenny, Madi & Nick Vuignier  
 St. Claude, MB  
 Ph: 204-750-2210  
 email: g.vuignier@pembinacoop.ca



Welcome to the 40th edition of the Pembina Triangle Sale! What an honor it is for us to be a part of this amazing achievement. As a group we should be darn proud of ourselves for continuing and growing this sale to what it has become today.

This year we offer you three open heifers sired by our walking herd bulls, JNR Theory and JNR Axis. Theory is none other than JNR Titanium's 3/4 brother who continues to produce worthy progeny for breeders across Canada. Axis is our senior herd sire who continues to impress us with his ability to produce marketable progeny year after year. Both these herd bulls have exceeded our expectations helping us bring our herd to new levels. It's heifers like these that we feel a program can be built around! Thank you to our past, future, and repeat buyers. Your confidence and support in our program is much appreciated.

Sincerely,

Gilles

## SKYRIDGE PETRA 100G

FULLBLOOD  
 1298115

GJV 100G

20 September 2019

MFI BAMBAM  
**JNR'S AXIS**  
 JNR'S MISS MARGO

KELLY'S SOLWAY ADONIS  
**SKYRIDGE PETRA 19B**  
 TATSHENSHINI 150X

SHAWACRES JAHARI 50L  
 MFI LOLITA 3107  
 PRAIRIE ROSE MONET  
 JNR MARGO  
 SOLWAY ADONIS  
 KFFC KATE Z09Y  
 IPU JOURNEYMAN 1L  
 TATSHENSHINI 7M

BW: 90. EPDs: 0.5 7.2 74.2 107.5 33.1 -0.6 70.2  
 Open.

We currently calve out 40 plus females in our fall program. This year, for the 40th edition of the Pembina Triangle Sale, we decided to pick the top two heifer calves from the group. Petra 100G is a long bodied, thick, broody female. Her pedigree is stacked with great ones, like MFI Bam Bam, Kelly's Solway Adonis, and IPU Journeyman. She is the producing kind that you can buy with confidence!



60

**\$6,500.00**

SkyRidge Farms

## SKYRIDGE SWEETNESS 88G

POLLED PUREBRED  
 PG1325992

GJV 88G

20 December 2019

MFI BAMBAM  
**JNR'S AXIS**  
 JNR'S MISS MARGO

TNT TURBO U447  
**SKYRIDGE SWEETNESS 32C**  
 SKYRIDGE SWEETNESS 35Y

SHAWACRES JAHARI 50L  
 MFI LOLITA 3107  
 PRAIRIE ROSE MONET  
 JNR MARGO  
 TNT ACCELERATOR S226  
 TNT MISS SADIE M68  
 SRH ROCK 7P  
 TRI-R SABLE 25S

BW: 84. actWW: 930. EPDs: 5.1 5.3 69.1 97.1 28.0 4.3 62.5  
 Open.

We still calve out a hand full of purebreds in our herd and breed them back to our Fleckvieh herd bulls. Sweetness is the result of crossing a Turbo daughter to Axis and boy did it work! 88G is a tank of a heifer that stood out since day one with her natural thickness and eye appeal. Bound to produce with her dam being a heavy milking TNT Turbo daughter. TNT Turbo was a son of TNT Accelerator and the great TNT Miss Sadie M68 who has progeny in many successful purebred operations. She will be a herd bull producer!



61

**\$2,750.00**

SkyRidge Farms



## SKYRIDGE MITZI 106G

POLLED FULLBLOOD  
P1298125  
GJV 106G  
28 September 2019

# \$6,000.00

*SkyRidge Farms*

# 62

JNR STEELE 248Z  
**JNR THEORY**  
OLE LOLITA 902A

LRX HP ROCKET 23Y  
**SKYRIDGE MITZI 3 12C**  
SKYRIDGE MITZI 18A

JNR'S SALTON  
JNR'S GRELLI 440P  
MFI LEGACY 7108  
MFI LOLITA 8050  
DFM MARCUS 14M  
LRX MS ROCKET 3W  
GIDSCO APPOLLO 3F  
SMITHBILT MITZI 134M

### Open.

There is a lot to be said about cow families and we are strong believers in them. Here is a powerful, polled heifer calf that is extremely soft sided, deep barreled, yet very angular in appearance. She comes from a very productive cow family. Her great dam is none other than Smiltbilt Mitzi 134M, who was a matriarch in our herd. SkyRidge Mitzi 106G is quite possibly the best polled female we have produced yet. There is no guess work here at all, as she's a female that has the potential to write her own legacy.

BW: 93. EPDs: 2.9 6.3 75.9 106.7 40.9 -0.2 78.9

## Terms & Conditions

**TERMS** - The terms of the sale are cash, cheque, VISA, Mastercard, or Interac, payable at par at sale location. There will be a 3% administration fee on all VISA or Mastercard purchases applied to the buyer's invoice. The right of property shall not pass until after settlement is made. Transcon Livestock Corp. reserves the right to require a certified cheque as settlement before releasing any sale cattle. Should any purchaser fail to settle for his purchase Transcon Livestock Corp. reserves full power to resell the animal to the best advantage either publicly or privately, without further notice. Any loss arising from such resale together with keep and all other expenses shall be payable by the defaulter. All settlements must be made with the clerks of the sale before any cattle will be released. **BID** - Every animal consigned to the sale must be sold by auction. No private sales will be allowed except as otherwise provided for in the terms and conditions. No by-bidding will be permitted. Each animal will be sold to the highest bidder.

**SALES TAXES** - Applicable sales taxes will be charged on semen, embryos and trucking fees (if listed), respective to the home province of the buyer, not the seller.

**DISPUTES** - In cases of disputes, bidding will be reopened between the parties involved. If no further bid is made the buyer will be the person from whom the auctioneer accepted the last bid. The auctioneer's decision in such matters will be final.

**PURCHASER'S RISK** - Each animal becomes the risk of the purchaser as soon as sold. Animals will be cared for at the purchaser's risk for a reasonable length of time.

**INFORMATION SUPPLIED** - The information contained in this catalog is believed to be true and accurate. However, the information has been supplied by the seller and neither Transcon Livestock Corp. or Jamesway Enterprises Ltd. assume any responsibility if the information supplied is not accurate.

**CATTLE PICTURES** - The images in this catalog are believed to be accurate representations of the individual animals. Transcon Livestock Corp. and Jamesway Enterprises Ltd. assume no responsibility if the images as received have been altered.

**ANNOUNCEMENTS** from the auction block will take precedence over the printed matter in the catalog. Buyers are therefore cautioned to pay attention to any such announcements.

**CERTIFICATE OF REGISTRY** - A registration/recording certificate issued by the applicable breed association and duly transferred will be furnished to the buyer of each animal after settlement has been made. It is the responsibility of the buyer to determine the acceptance of this certificate in any other association.

**SHIPPING** - Assistance will be given in making shipment after the sale but no risk is assumed by the Sales Management or Seller. Expenses incurred are the responsibility of the purchaser. Purchasers are requested to furnish shipping instructions when making settlement.

**BREEDERS GUARANTEE** - As per applicable Canadian Breed Association Breeding Guarantee guidelines. Copies are available at the sale settlement desk to be picked up by the buyer at any time. In no event shall the seller be responsible for reimbursing more than the purchase price.

**EXCEPTION TO GUARANTEE** - In cases where the animal is subjected to any hormonal or surgical reproduction techniques after the sale, the guarantee shall be null and void.

**HEALTH** - It is the buyer's responsibility to determine health requirements for importing any animal into his province or state. Transcon Livestock Corp. assumes no responsibility for the health status of any animal in the sale.

**ACCIDENTS** - Although every precaution will be taken to protect the safety and comfort of buyers, neither the Sales Management, auctioneer, consignors. or Association assumes any responsibility in this matter and disclaims any liability legal or otherwise in the event of accident or loss of property.

**RIGHTS AND OBLIGATIONS** - The above terms and conditions of the sale shall constitute a contract between the buyer and the seller and be equally binding to both. Resale of animals following purchase in this sale shall constitute a separate transaction and the rights and obligations of the two parties connected thereto are not covered by the terms and conditions of this sale.

**TRANSCON LIVESTOCK CORP. IS AGENT ONLY** - It is to be clearly understood that Transcon Livestock Corp. is only acting as a medium between buyer and seller and is not in any way responsible for any failure on the part of either party to live up to his obligations, neither does Transcon Livestock Corp. assume any financial obligations to collect or enforce collection of any monies between parties, and any legal action that may, in exceptional cases, be taken, must be between buyer and seller.

The Auctioneer shall have the right to refuse bids from anyone who has a previous record of default in payment or who has not made proper credit clearance prior to the sale with the owner or Sale Managers.