

# LONE STONE FARMS

## *Annual Bull Sale* SIMMENTAL & RED ANGUS

FRIDAY FEBRUARY 24, 2023 • 1:30 PM SALE TIME



ON THE FARM AT WESTLOCK, ALBERTA  
*4 miles north & half mile west of Westlock*



### Auctioneer

Dean Edge.....403-704-0280

### Sales Staff

Robert Lind.....780-542-0123

Darren Paget.....403-323-3985

### Sale Day Phones

Jay Good.....403-556-5563

Glenn Norton.....780-542-0634

Darren Paget.....403-323-3985

Cody Coupland.....403-877-0799

### Sale Consultant

Mark Holowaychuk.....403-896-4990

### Phone bids

Arrangements can be made with an independent buyer or any of the sales staff.

All animals will be viewed in outside pens and sold via video in the sales barn.

### Insurance

Insurance available sale day through Monica Czech.

### Sale Headquarters

Ramada Westlock Inn & Suites.....780-349-2245

Best Western Westlock.....780-349-4102

### U.S. Exchange

The U.S. Exchange rate will be announced at the sale.

**We offer Two Options** Please choose one of the following and inform the clerks on sale day:

1. \$100 discount if picked up sale day.

2. We will keep your bull until you can come and get him. A charge of \$3/day will apply starting April 1, 2023. We ask that you insure your purchases if you leave him at the farm. Each animal becomes the responsibility of the purchaser as soon as sold.

### Breeding Guarantee

All bulls are guaranteed to be structurally sound and to have passed a semen test prior to sale day. Health checks and semen tests are done by Westlock Veterinary Clinic. Routine vaccinations have been administered as well as Footrot and Pinkeye vaccine.

We guarantee our bulls to be satisfactory breeders. Please contact us if you are having a problem so we can come up with an option to fix it.

We retain NO ownership in the bulls. You purchase the bulls outright 100%. There are no sale credits to bid against in our sale.

### Simmental Breed Average EPDs

CE 7.3 BW 3.7 WW 76 YW 111.7 Milk 28.3 MCE 3.9 MWW 66.2

### Red Angus Breed Average EPDs

CE 2.5 BW 1.2 WW 39 YW 66 Milk 24 MCE 5.2

Donuts compliments of Canadian Farm Insurance.

Videos online at [www.transconlivestock.com](http://www.transconlivestock.com), DLMS or our website

[WWW.LONESTONEFARMS.COM](http://WWW.LONESTONEFARMS.COM)

Internet Bidding Available

DLMS  
[www.dlms.ca](http://www.dlms.ca)

For more information call DLMS:  
Mark Shologan 780.699.5082 or  
DLMS Purebred Team 780.991.3025



## Welcome

As fourth generation farmers, we are now in our 39th year of registering our own cattle. Through the years, we have found a few things that happen on an ongoing basis.

- There will always be a group predicting the end of the cattle business
- There will always be political interference in the market place
- Mother Nature will beat you down til you can hardly breath, then at the last moment give you a taste of warm sunshine and soft rain

But what keeps us going? Not only going, but thriving? First of all, the love of that next generation of genetics. That new calf and all of its' potential. The dreams that never die and are reborn in us every calving season. Our kids and grandkids enjoying the cattle and the farm. Our faithful customers who show up every year, many with young families in tow.

We are committed, as seedstock producers, to providing you with bulls that are DNA tested, on a full vaccination program, are fed high quality balanced rations high in protein, are structurally correct and athletic, and when sold to you they are 100% your property.

Thank you to all our past buyers who trust our program and our service. Kids, Cows, Family & Friends, it just doesn't get any better than that. Come enjoy the journey with us!

- Lonnie & Karen

## Lone Stone Farms

Lonnie & Karen Brown • Nathan & Alisha Brown

Box 5314 Westlock, AB T7P 2P5

Karen cell 780-307-8056 Nathan cell 780-307-8381

email [lonestonecattle@gmail.com](mailto:lonestonecattle@gmail.com)

website [lonestonefarms.com](http://lonestonefarms.com)



# LONE STONE FARMS

## Annual Bull Sale

FRIDAY FEBRUARY 24, 2023 • 1:30 PM AT THE FARM • WESTLOCK, AB

*Be our Guest Lunch starts at 11:30 a.m. Sale day*



### Welcome from Transcon

Welcome to the 22nd Annual Lone Stone Farms Bull Sale. This annual sale is held in the beautiful sale facility right on the farm just north of Westlock.

Lone Stone Farms is a family run mixed farming operation with 300+ cows and roughly 1500 acres of crop. Lonnie and Karen along with Nathan and Alisha and kids (Carter, Biz and Luke) manage most of the daily workload for the operation. There is a passion for agriculture and the cattle industry here and you can already see that in the grandkids, its very exciting to see!

Here at Lone Stone you will get a hassle free buying experience with no retained ownership along with a No credit policy. This is truly unique in today's cattle industry and very refreshing to see. Customer satisfaction is always the focus at Lone Stone.

The 2 yr old bulls go to grass all summer, they are not raised in a feedlot pen like so many extra age bulls in the industry. Then after harvest they come in to be fed in a large winter feeding area. Lots of exercise keeps these bulls sound and functional. These virgin 2 yr olds will really help you get some larger groups of cattle bred this spring. Buy with confidence!

The Simmental bulls will be led by the JNR Cashmere sire group with



Office: 403-638-9377  
office.transconlivestock@gmail.com  
**WWW.TRANSCONLIVESTOCK.COM**

17 sons in total. They are all polled and have that extra body length everyone is searching for today. Callahan will have the second largest sire group with 13 red and hairy bulls, they are a very uniform group. If you are looking for multiple bulls for consistency in your calf crop definitely check these sire groups out.

The Red Angus bulls will offer a great variety of power and calving ease mixed into this powerful group of bulls. The largest sire group will be Flex with 13 sons, they are impressive. There is definitely many heifer bull candidates to go along with the outstanding power bulls.

Hope to see you sale day for a great set of bulls and some awesome hospitality at Lone Stone Farms. If you are unable to attend please feel free to call any of the Transcon team to assist you in your herdsire search.

Glenn Norton  
Transcon Livestock Corp.



Jay Good  
403-556-5563



Glenn Norton  
780-542-0634



Darren Paget  
403-323-3985



Cody Coupland  
403-877-0799



Introducing  
HOMO POLLED 100% FLECKVIEH FSS POLLED

# HENDRIX



CSA # 1399853

HOMO POLLED • NON DILUTOR • STRUCTURALLY CORRECT • HEIFER FRIENDLY  
EXCEPTIONAL LENGTH OF BODY • QUIET, GENTLE DISPOSITION • EASY FLESHING



*Gatton working at SOT*



*semen for sale*  
**\$200**  
PER STRAW  
5 STRAW MINIMUM

Whether you are looking to reduce birthweight in a power cow, or calve out first calf heifers, Hendrix will tone down the birthweight and give you very usable progeny. Calves are solid pattern.



*Daughters working at St. John Simmental in Kentucky*





1

## LONE STONE CASHMERE 279J

Fullblood S1353067 LNK 279J Feb 28, 2021

JNR'S CONCEPT  
JNR CASHMERE  
JNR SHELAIN

WYVERN BENZWEISER  
LONE STONE MS BENZ 62C  
LONESTONE MISS ROM 133P

PERF BW 100 AWW 744 AYW 1256 EPDs CE 1.5 BW 7.1 WW 83.7 YW 123.8 Milk 25.7 MCE 0.4 MWW 67.6



JNR CASHMERE SIRE OF LOT 1-13

100% Fleckvieh. Polled. Sire Verified. Non-Dilutor. Starting off our Simmental section we have picked a strong big hipped Cashmere son, coming off a Benzweiser daughter. A bull we got from Robert Lipiatt and wished we had gotten him at a younger age. Benz left us with beautiful females, specifically just amazing udders. This will be the first male calf sold out of 62C.



2

## LONE STONE CASHMERE 245J

Polled Fullblood P1352719 LNK 245J Jan 17, 2021

JNR'S CONCEPT  
JNR CASHMERE  
JNR SHELAIN

WOLFES TITAN FF 51T  
LONE STONE MS EVAN 9X  
LONE STONE MS ADONIS 43T

PERF BW 96 AWW 719 AYW 1153 EPDs CE 2.4 BW 6 WW 79.6 YW 113.7 Milk 30 MCE 0.6 MWW 69.8



LONE STONE MS EVAN 9X DAM OF LOT 2

Full Fleckvieh. Polled/Scurred. Sire Verified. Definitely a bull that has stood out in the keeper bull pen, even though he's had no ear tag, I've always known who he was. Just a classic Cashmere look-a-like! Great hair coat and comes from a big powerful dam.





3

**LONE STONE CASHMERE 226J**

Polled Fullblood P1352736 LNK 226J Jan 9, 2021

JNR'S CONCEPT  
**JNR CASHMERE**  
 JNR SHELAIN

WOLFES TITAN FF 51T  
**LONE STONE MS EVAN 25Y**  
 LONE STONE MISS CUJO 98M

**PERF** BW **91** AWW **659** AYW **1166**  
**EPDs** CE **4.3** BW **5.1** WW **74.6** YW **109.5** Milk **31.8** MCE **2.6** MWW **69.1**

100% Fleckvieh. Polled. Sire Verified. Non-dilutor. This big guy comes from an Evan 440L granddaughter that has produced 6 bulls for our past bull sales. The Evan 440L maternal bloodline has been so good to us. They have longevity bred into them. This guy is stretchy and has a good big hip on him.



4

**LONE STONE CASHMERE 214J**

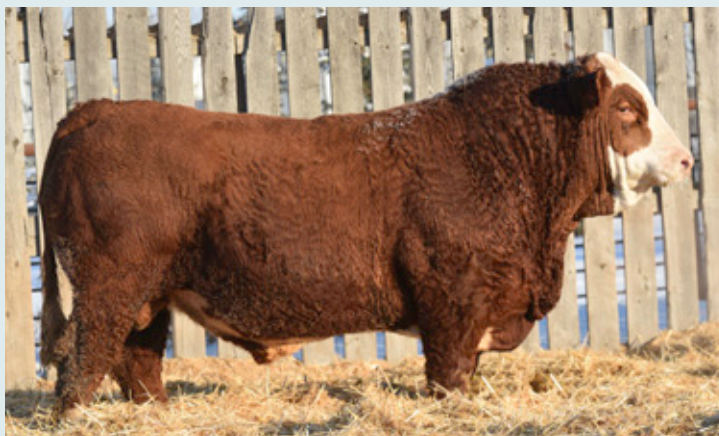
Polled Fullblood S1353073 LNK 214J Jan 6, 2021

JNR'S CONCEPT  
**JNR CASHMERE**  
 JNR SHELAIN

APLX ENVOY 2Y  
**LONE STONE MS ENVOY 36D**  
 LONE STONE MS STAMPY 81U

**PERF** BW **101** AWW **732** AYW **1350**  
**EPDs** CE **-0.6** BW **7.7** WW **84.8** YW **120.5** Milk **33.7** MCE **-1.1** MWW **76.1**

100% Fleckvieh. Polled. Sire Verified. The Cashmere sons have hair, size, muscle mass and the siblings all look so much alike. He has an easy keeping, heavy set Envoy dam.



5

**LONE STONE VERMONT 246J**

Polled Fullblood P1353072 LNK 246J Jan 17, 2021

JNR'S CONCEPT  
**JNR CASHMERE**  
 JNR SHELAIN

DOUBLE BAR D UNITED 176A  
**BLACK GOLD MS FLORA 13D**  
 MFI FLORA 6144

**PERF** BW **105** AWW **685** AYW **1171**  
**EPDs** CE **-0.3** BW **7.7** WW **81.6** YW **117.5** Milk **25.2** MCE **-2.5** MWW **66**

100% Fleckvieh. Polled. Sire Verified. Don-dilutor. The dam of this bull was purchased from Black Gold Simmentals as a calf. She is a very big powerful cow. Have always liked the way this bull moves. He has an easy gait and a long stride.



6

**LONE STONE CASHMERE 273J**

Polled Fullblood P1353092 LNK 273J Feb 20, 2021

JNR'S CONCEPT  
**JNR CASHMERE**  
 JNR SHELAIN

JNR'S CAEDEN  
**LONE STONE DOLLY 15E**  
 BMS DOLLY 40B

**PERF** BW **100** AWW **737** AYW **1139**  
**EPDs** CE **1.7** BW **6.7** WW **75.9** YW **103.5** Milk **33.3** MCE **1.8** MWW **71.3**

100% Fleckvieh. Polled. Sire Verified. Give this guy a look. On his dam's side he goes back to the great Antonius bull. Really wide across the back and butt. I like his height and length of body.



7

**LONE STONE CASHMERE 275J**

Polled Fullblood P1353096 LNK 275J Feb 22, 2021

JNR'S CONCEPT

**JNR CASHMERE**

JNR SHELAIN

BLCC MR BARON 326Z

**LONE STONE LEXA 28E**

LONE STONE EL NINO 2T

**PERF** BW **95** AWW **771** AYW **1195****EPDs** CE **1.7** BW **6.3** WW **77.9** YW **107** Milk **33.6** MCE **-0.4** MWW **72.6**

100% Fleckvieh. Polled. Sire Verified. This bull has a lot of style, profiles great, get in behind him and find a great big rump! This is his Dam's third calf. Sold a son to Ruch Land & Cattle as well as have a daughter in the herd. You will also find we are offering her 4th calf as Lot 60 in the yearling Simmental section.



8

**LONE STONE CASHMERE 269J**

Polled Fullblood P1353101 LNK 269J Feb 11, 2021

JNR'S CONCEPT

**JNR CASHMERE**

JNR SHELAIN

APLX ENVOY 2Y

**LONE STONE PILAR 42E**

LONE STONE MS EVAN 36W

**PERF** BW **94** AWW **749** AYW **1243****EPDs** CE **2.2** BW **6.1** WW **84.9** YW **123.6** Milk **36.2** MCE **1.9** MWW **78.7**

100% Fleckvieh. Polled. Sire Verified. Can't say enough about these Cashmere sons. You can sure pick them out in this big bull group. Another thing I like about the Cashmeres is he makes them masculine looking. We in the industry are trending toward a more refined, less masculine featured male. John Wolfe's advice to us this past summer, is to seek out males that exhibit masculinity at a young age. This bloodline is hitting the ball out of the park!



9

**LONE STONE CASHMERE 206J**

Homo Polled Fullblood P1353054 LNK 206J Jan 2, 2021

JNR'S CONCEPT

**JNR CASHMERE**

JNR SHELAIN

WYVERN BENZWEISER

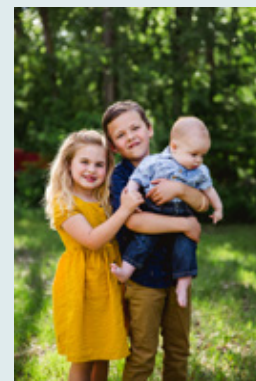
**LONE STONE MS BENZ 28C**

LONE STONE MS EVAN 44Y

**PERF** BW **92** AWW **662** AYW **1068****EPDs** CE **4.7** BW **4.2** WW **70.1** YW **94.9** Milk **31.6** MCE **2.6** MWW **66.7**

100% Fleckvieh. Homo Polled. Sire Verified. Non-dilutor. We think very highly of these Benzweiser daughters and getting to use a bull out of him would be the icing on the cake. He looks very much like his maternal grandsire. His stature being moderate and his muscle pattern explosive! Being Homo Polled makes him truly valuable.





## 10 LONE STONE CASHMERE 243J

Homo Polled Fullblood P1353055 LNK 243J Jan 17, 2021

JNR'S CONCEPT  
JNR CASHMERE  
JNR SHELAIN

BLCC MR BARON 326Z  
LONE STONE MS BARON 32C  
LONE STONE MS HUGO 5Y

PERF BW **107** AWW **716** AYW **1090**  
EPDs CE **0.9** BW **6.7** WW **75.2** YW **101.2** Milk **28.9** MCE **-0.4** MWW **66.5**

100% Fleckvieh. Homo Polled. Sire Verified. A second homo polled bull to consider. It's sure nice using a homo polled herdsire. Having the dehorning done for you at birth has true time and economic value. Cashmere has proven to us that performance can come with a hornless head.



100% Fleckvieh. Polled. Sire Verified. Here is a bull to be seriously looked at. Cherry red in color and plenty of natural muscle. John Wolfe was here last summer and went back for a second look at his Dam 15C, while touring the herd. We have sold a female out of her to Rentz Farms in 2019.

## 11 LONE STONE CASHMERE 234J

Polled Fullblood S1353052 LNK 234J Jan 14, 2021

JNR'S CONCEPT  
JNR CASHMERE  
JNR SHELAIN

BLCC MR BARON 326Z  
LONE STONE MS BARON 15C  
52 Y YOLAND

PERF BW **98** AWW **715** AYW **1045**  
EPDs CE **1.3** BW **5.9** WW **74.4** YW **98.1** Milk **27.1** MCE **-0.1** MWW **64.3**





## 12 LONE STONE JARED 257J

Polled Fullblood P1352748 LNK 257J Jan 26, 2021

JNR'S CONCEPT  
JNR CASHMERE  
JNR SHELAIN

WOLFE'S WESTERN FF 12X  
LONE STONE MS WESTERN 4Z  
LONE STONE MS KYLE 84U

PERF BW 110 AWW 627 AYW 1118  
EPDs CE -0.2 BW 7.8 WW 74.5 YW 106.8 Milk 31.2 MCE 1.1 MWW 68.5

100% Fleckvieh. Polled/Scurred. Sire Verified. Here is another son of Cashmere that looks so much like him. He has so much length of hip. It doesn't hurt him to have a bit of C&B Western in his background.

## 13 LONE STONE CASHMERE 267J

Polled Fullblood P1352733 LNK 267J Feb 6, 2021

JNR'S CONCEPT  
JNR CASHMERE  
JNR SHELAIN

PROSTOCK HUGO 7052T  
LONE STONE MS HUGO 20Y  
LONE STONE MS KYLE 68U

PERF BW 103 AWW 779 AYW 1259  
EPDs CE 2.3 BW 6 WW 83.3 YW 120.4 Milk 32.8 MCE 2.8 MWW 74.4

Full Fleckvieh. Polled. Sire Verified. This guy is double polled and I will be checking to see if he's homo polled before the sale. He is a moderate sized bull with moderate bone. 103 lb birthweight is the heaviest weight his Dam has had in 9 calves. We've sold a couple of bred females out of her in past sales to Arthur Smith and Black Gold Simmentals.



## 14 LONE STONE CALLAHAN 229J

Fullblood 1353039 LNK 229J Jan 10, 2021

SIBELLE DIRTY HARRY 25Z  
WCC WELLS' CALLAHAN 1C  
WCC WELLS' ULTRIX 808U

DOUBLE BAR D SPITFIRE 20X  
STARWEST BRANDIE  
IPU MS. ROWEENA 135X

PERF BW 102 AWW 676 AYW 1044  
EPDs CE 4 BW 5.7 WW 76.8 YW 104.1 Milk 30 MCE -0.1 MWW 68.4

100% Fleckvieh. Horned. Sire Verified. Non-dilutor. This big guy will catch your eye in the pen. A very well balanced bull that has stature and great style. Bought his dam from Starwest in 2015.







**100% Fleckvieh. Polled. Sire Verified. Non-dilutor.** This is pretty cool polled bull out of a Prostock Hugo cow. There is a female out of 29Y working at Smith Simmentals and 3 bulls have gone through our bull sale. 270J has plenty of stature and is very dark red. Easy to work with personality!

## 15 **LONE STONE CALLAHAN 270J**

Polled Fullblood P1352740 LNK 270J Feb 15, 2021

SIBELLE DIRTY HARRY 25Z  
WCC WELLS' CALLAHAN 1C  
WCC WELLS' ULTRIX 808U

PROSTOCK HUGO 7052T  
LONE STONE MS HUGO 29Y  
LONESTONE MISS ROONIK 41R

PERF BW **104** AWW **792** AYW **1246**  
EPDs CE **5.1** BW **5.5** WW **85.3** YW **120.8** Milk **37.2** MCE **2** MWW **79.9**



## 16 **LONE STONE CALLAHAN 271J**

Fullblood 1353053 LNK 271J Feb 17, 2021

SIBELLE DIRTY HARRY 25Z  
WCC WELLS' CALLAHAN 1C  
WCC WELLS' ULTRIX 808U

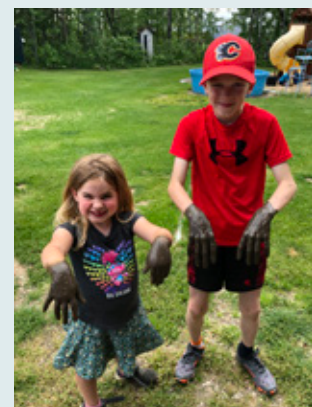
WYVERN BENZWEISER  
LONE STONE MS BENZ 23C  
LAZY RS MISS YOGA FF

PERF BW **106** AWW **838** AYW **1238**  
EPDs CE **5.7** BW **6** WW **78** YW **103.6**  
Milk **42.4** MCE **1** MWW **81.4**

**100% Fleckvieh. Horned. Sire Verified. Non-dilutor.** Extremely long spined individual. Lot 50 has the same Dam as this guy. A very nicely made female. Very deep hipped and passes on a hairy coat to her offspring.



LONE STONE MS BENZ 23C DAM OF LOT 16







## 17 LONE STONE CALLAHAN 259J

Polled Fullblood P1352695 LNK 259J Jan 26, 2021

SIBELLE DIRTY HARRY 25Z  
WCC WELLS' CALLAHAN 1C  
WCC WELLS' ULTRIX 808U

WELLS' PLD STAMPEDER 19S  
LONE STONE MS STAMPY 59U  
LONESTONE MS MALCOLM 31R

PERF BW 101 AWW 740 AYW 1209  
EPDs CE 3.2 BW 5.9 WW 79.5 YW 110.4 Milk 39.4 MCE -2.3 MWW 79.2



LONE STONE MS STAMPY 59U DAM OF LOT 17

100% Fleckvieh. Sire Verified. Polled. Non-dilutor. The Dam of this bull is our oldest cow and is 15 year old and still in our herd, having her 14th calf. She has never missed having a calf and every calf has made it to market or is in our herd. Every calf has been polled so I would dare to speculate that she is Homo Polled. This bull has longevity and predictability in his genes. Purchase with confidence.

## 18 LONE STONE CALLAHAN 207J

Fullblood 1353066 LNK 207J Jan 3, 2021

SIBELLE DIRTY HARRY 25Z  
WCC WELLS' CALLAHAN 1C  
WCC WELLS' ULTRIX 808U

BLCC MR BARON 326Z  
LONE STONE MS BARON 61C  
LONESTONE MISS CUJO 79N

PERF BW 89 AWW 632 AYW 1142  
EPDs CE 4.4 BW 5 WW 70.5 YW 103.4 Milk 34.6 MCE -0.3 MWW 69.9

100% Fleckvieh. Sire Verified. Horned. This bull sure does look like his sire Callahan. A bull that leaves us with strong males and females.



## 19 LONE STONE CALLAHAN 218J

Fullblood 1353086 LNK 218J Jan 8, 2021

SIBELLE DIRTY HARRY 25Z  
WCC WELLS' CALLAHAN 1C  
WCC WELLS' ULTRIX 808U

ABR SIR ARNOLDS IMAGE  
LONE STONE MS IMAGE 98D  
BMS DOLLY 40B

PERF BW 99 AWW 685 AYW 1293  
EPDs CE 6.7 BW 4.7 WW 73.6 YW 98  
Milk 38.6 MCE 3.5 MWW 75.4



LONE STONE MS IMAGE 98D DAM OF LOT 19

100% Fleckvieh. Sire Verified. Horned. Non-dilutor. This is 98D's first bull to sell, 2 females in the herd and 1 sold in our Female Sale. 218J has plenty of power in him from both sides. He has just the right amount of bone. That shot of Antonius on his maternal side makes me think he could be a female maker.







## 20 LONE STONE DOMAIN 241J

Polled Fullblood P1353024 LNK 241J Jan 17, 2021

SIBELLE DIRTY HARRY 25Z  
WCC WELLS' CALLAHAN 1C  
WCC WELLS' ULTRIX 808U  
PROSTOCK HUGO 7052T  
LONE STONE MS HUGO 27Z  
MISS LONESTONE SADIE 38S

PERF BW 77 AWW 663 AYW 1076  
EPDs CE 9.1 BW 1.9 WW 69.6 YW 93.8  
Milk 36.9 MCE 4.6 MWW 71.7



LONE STONE MS HUGO 27Z DAM OF LOT 20

Full Fleckvieh. Polled. Non-dilutor. Cherry red in color, moderate stature in size. Sadie 27Z is our last Prostock Hugo daughter. She's done an excellent job producing 2 females for our Female Sale and sold 3 bulls for commercial customers. El Nino in the background of this pedigree adds some uniqueness.



100% Fleckvieh. Sire Verified. Polled. LNK 82A is the smallest cow working in our herd. Small but mighty. Two females have sold in our Female Sale and two bulls in our Bull Sales. She has literally been bred to a different herd sire her whole career.

## 21 LONE STONE DIVINE 272J

Polled Fullblood P1364393 LNK 272J Feb 19, 2021

KEET'S DRIVEN 32D  
LONE STONE DIVINE 864F  
LONE STONE MS ENVOY 66D

BLCC MR ANDREW 190X  
LONE STONE MS ANDY 82A  
LONESTONE MS MALCOLM 31R

PERF BW 90 AWW AYW  
EPDs CE 7.1 BW 2.5 WW 59.8 YW 82.2 Milk 35.2 MCE 3.1 MWW 65.1





## 22 LONE STONE FULL MOON 217J

Fullblood 1353109 LNK 217J Jan 7, 2021

OSF CLASSIC 11C  
**SPRUCEBURN FULL MOON 48F**  
 SPRUCEBURN STARSTRUCK  
 DOANGUITA BAR5 BROOK 314C  
**DWAYANN GRACE 14F**  
 DWAYANN GRACE 26Y

PERF BW **90** AWW **639** AYW **1081**  
 EPDs CE **5.5** BW **4.2** WW **63.8** YW **96.6**  
 Milk **37.7** MCE **2.7** MWW **69.6**



DWAYANN GRACE 14F DAM OF LOT 22

100% Full Fleckvieh. Sire Verified. Horned. Non-dilutor. We have all bought a female that we didn't pay much money for but has really paid for herself or has the potential to. This would describe Dwayanne Grace 14F. Can't fault this cow in any aspect: type, size, feet, udder – she is top notch. She's got a pedigree that is foreign to me, but I really appreciate the quality of progeny she is giving us. This would probably be a cool bull to buy.



## 23 LONE STONE ASTRO 230J

Fullblood 1361510 LNK 230J Jan 10, 2021

WCC WELLS' CALLAHAN 1C  
**DIAMOND T 273G**  
 DT 273B

DT DUSTY VEGA 260D  
**DIAMOND T 136G**  
 DT BLUEBELL 386D

PERF BW **80** AWW **703** AYW **1133**  
 EPDs CE **11.3** BW **1.5** WW **75.6** YW **109.2** Milk **35.8** MCE **5.2** MWW **73.6**

100% Full Fleckvieh. Sire Verified. Horned. Non-dilutor. We purchased this bull in Dam from Diamond T Simmentals. He came out just the right size for a heifer and has always been a looker. I would not be afraid to use this bull on moderate to large framed heifers.





24

**LONE STONE SULLY 244J**

Fullblood 1353133 LNK 244J Jan 17, 2021

JNR'S SALTON  
**RWR SULLY 9E**  
 IPU MS. ROWEENA 204X  
 JB CDN RANCHERO 1631  
**LONE STONE HANNA 17G**  
 LONE STONE MS TOMMY 73D

**PERF** BW **88** AWW **705** AYW **1070**  
**EPDs** CE **9.1** BW **3.5** WW **67.1** YW **86.9** Milk **37** MCE **5** MWW **70.6**

**100% Full Fleckvieh. Horned.** Here is a smaller framed bull out of our Sully bull. Sully is a herdsire we have used for 5 calving seasons on our heifers exclusively. A very dependable bull to give just the right size and shape of calf, for a first calving heifer. I expect this son to do the same job on heifers as his sire does.



25

**LONE STONE HAXENT 254J**

Fullblood UNR1362705 LNK 254J Jan 21, 2021

HAXON  
**HAXENT**  
 PIPPI  
 JACK PINE CUJO 96H  
**LONE STONE MISS CUJO 25L**  
 MRLN PILAR

**PERF** BW **104** AWW AYW  
**EPDs** CE **1.6** BW **6.1** WW **67.2** YW **93.6** Milk **42.6** MCE **-3.5** MWW **76.2**

**100% Full Fleckvieh.** This is an embryo calf as well. I missed registering him. It can still be done if someone wants it otherwise going to sell him without papers.



26

**LONE STONE SEGAL 240J**

Fullblood T1362695 LNK 240J Jan 16, 2021

ANTONIUS  
**GREAT GUNS SEGAL 16A**  
 GREAT GUNS ADRIA  
 MONT-BEAU JULIUS  
**BAR 5 SA MALISSA 823N**  
 ELDANDI MINKA

**PERF** BW **113** AWW AYW  
**EPDs** CE **-1.7** BW **9** WW **71.6** YW **100.5** Milk **31.8** MCE **-3.9** MWW **67.6**

**100% Full Fleckvieh. Sire Verified. Horned.** Embryo calf that is very moderate in stature. Some old school genetics here with Segal and Bar 5 Malissa being the parents of this 2-year-old.



27

**LONE STONE CUJO 261J**

Fullblood T1362713 LNK 261J Jan 28, 2021

JACK PINE BALI 114F  
**JACK PINE CUJO 96H**  
 JACK PINE ALMRAUSCH 96E  
 WELLS' PLD STAMPERD 19S  
**LONE STONE MS STAMPY 58X**  
 DSLS HALLE FF53T

**PERF** BW **105** AWW AYW  
**EPDs** CE **0.4** BW **8.5** WW **72.3** YW **99.7** Milk **37.7** MCE **-1.6** MWW **73.9**

**100% Full Fleckvieh. Sire Verified. Horned.** If you are particular about the females in your herd, check out this guy. A Jack Pine Cujo Embryo calf out of a Stampeder daughter. Look to Cujo to give you very desirable females and the Stampeder (Puma) genetics to give you performance. Of all the bulls we have used over the past 40 years, Jack Pine Cujo has so much to offer the Fleckvieh world.





28

## LONE STONE GLADIATOR 274J

Polled Black Purebred BPG1353091 LNK 274J Feb 22, 2021

W/C BANKROLL 811D  
CIRCLE G GLADIATOR 78G  
LFE BS CROCUS 61C

BLCC MR RED ROCK 67C  
LONE STONE SHELLEY 14E  
LONE STONE SHELLEY 3C

Black. Homo Polled. Purebred (waiting on DNA). According to my records this boy is  $\frac{3}{4}$  black and  $\frac{1}{4}$  Fleckvieh. He's a really thick made bull. Very docile in nature. His dam is  $\frac{1}{2}$  Black Simmental and  $\frac{1}{2}$  Fleckvieh. She is a very good cow, producing a saleable calf every year. Love her udder attachment and size of her teats.

PERF BW 102 AWW 759 AYW 1361 EPDs CE 12.2 BW 2.7 WW 79.8 YW 119.2 Milk 31.6 MCE 6.2 MWW 71.5



29

## RED LONE STONE FLEX 139J

Red Angus 2205300 LNK 139J Jan 12, 2021

RED MRLA FLEX 49Z  
RED LWNBRG FLEX 79B  
RED TED CHATEAU 6U

RED WILDMAN DAMAGE 930W  
RED LONE STONE ROSETTE 38B  
RED LONE STONE ROSETTE 802U

Parent Verified. Of all the 2 year old Flex bulls on offer, this may be my favorite. He is such a smooth made bull. Thinking the females out of him are going to be just so feminine, front pasture type of cattle.

PERF BW 97 AWW 740 AYW 1264 EPDs CE -3 BW 4.6 WW 61 YW 100 Milk 17 MCE 8





## 30 RED LONE STONE FLEX 179J

Red Angus 2205292 LNK 179J Feb 16, 2021

RED MRLA FLEX 49Z  
 RED **LWNBGR FLEX 79B**  
 RED TED CHATEAU 6U  
 RED CLAY COLT 21X  
 RED **LONE STONE FAYETTE 2B**  
 RED MYALTA GM MARNI 19M

PERF BW **93** AWW **740** AYW **1136**  
 EPDs CE **1** BW **2.6** WW **54** YW **85** Milk **14** MCE **11**

Parent Verified. We have sold 2 siblings of Lot 30 in past bull sales. His Dam is a big Colt daughter and his maternal grandam is an Indeed daughter. Lot of power in this pedigree.



## 31 RED LONE STONE FLEX 125J

Red Angus 2205299 LNK 125J Jan 5, 2021

RED MRLA FLEX 49Z  
 RED **LWNBGR FLEX 79B**  
 RED TED CHATEAU 6U  
 RED CROWFOOT MOONSHINE 8081U  
 RED **LONE STONE SUIJI LASS 24B**  
 RED LONE STONE SUIJI LASS 7Z

PERF BW **84** AWW **740** AYW **1082**  
 EPDs CE **4** BW **1.6** WW **48** YW **78** Milk **15** MCE **13**

Parent Verified. This will be the third son to sell out of 24B. Great udders come from this Moonshine line.



## 32 RED LONE STONE LUNAR 143J

Red Angus 2204689 LNK 143J Jan 12, 2021

RED MRLA FLEX 49Z  
 RED **LWNBGR FLEX 79B**  
 RED TED CHATEAU 6U  
 RED LONE STONE B-TRAIN 85W  
 RED **LONE STONE VIOLET 40Y**  
 RED MYALTA GM MILLIE 35M

PERF BW **92** AWW **740** AYW **1159**  
 EPDs CE **-2** BW **2.8** WW **52** YW **80** Milk **20** MCE **8**

Parent Verified.



## 33 RED LONE STONE FLEX 120J

Red Angus 2205304 LNK 120J Jan 4, 2021

RED MRLA FLEX 49Z  
 RED **LWNBGR FLEX 79B**  
 RED TED CHATEAU 6U  
 RED CLAY COLT 21X  
 RED **LONE STONE FAYETTE 54B**  
 RED LONE STONE FAYETTE 43X

PERF BW **80** AWW **740** AYW **1027**  
 EPDs CE **2** BW **1.7** WW **45** YW **68** Milk **14** MCE **13**

Parent Verified. I would not consider this guy a true heifer bull. You may get away with it but always keep in mind the power maternally from Colt and paternally from Flex.



## 34 RED LONE STONE FLEX 141J

Red Angus 2292778 LNK 141J Jan 12, 2021

RED MRLA FLEX 49Z  
 RED LWNBRG FLEX 79B  
 RED TED CHATEAU 6U  
 RED GLESBAR KNIGHT 9C  
 RED LONE STONE MISS BUR 64E  
 RED GLESBAR MISS BUR 61Y

PERF BW 84 AWW 740 AYW  
 EPDs CE 6 BW 0.6 WW 49 YW 73 Milk 14 MCE 13

**Parent Verified.** Here is another guy to be careful on with heifers. Light birth weights don't always make a heifer bull. He had a 39 cm testicle measurement at 16 months. We measure testicles on all bulls keeping for 2 year olds, once they are about 16 months. It is part of the culling process we use to keep the high standard which you can trust in our 2 year old program.

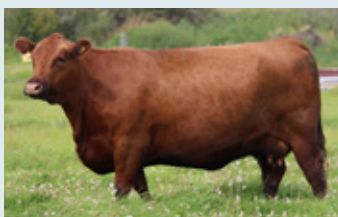


## 35 RED LONE STONE LAMBERT 150J

Red Angus 2204710 LNK 150J Jan 16, 2021

RED MRLA FLEX 49Z  
 RED LWNBRG FLEX 79B  
 RED TED CHATEAU 6U  
 GEIS KODIAK 21'07  
 RED GEIS POTEET 45'11  
 RED GEIS POTEET 3'09

PERF BW 89 AWW 740 AYW 1091  
 EPDs CE 1 BW 3.3 WW 47 YW 76  
 Milk 25 MCE 11



RED GEIS POTEET 45'11 DAM OF LOT 35

**Parent Verified.** The dam of this bull went elite in 2017 and has been elite ever since. We have 3 daughters working in herd and this will be her fourth bull to sell. The Poteet female line comes from purchasing 45Y in the Geis Angus dispersal. That was a great buy. 150J has the genetic make up to produce excellent replacement females.



## 36 RED LONE STONE FARLEY 151J

Red Angus 2205280 LNK 151J January 17 2021

RED COMBEST JUGGERNAUT 1613D RED WILDMAN DAMAGE 930W  
 RED TER-RON FARLEY 5F RED LONE STONE JOY 38A  
 RED TER-RON BOBBIE 42B RED LONE STONE LUCE 72U

PERF BW 90 AWW 740 AYW 1031  
 EPDs CE 1 BW 2.2 WW 33 YW 52 Milk 26 MCE 7

**Parent Verified.** The Dam of this bull went elite in 2018. A very consistent producing cow. Farley 151J has tremendous spring of rib. With his length of hip and that deep rib certainly makes an eye catching side profile.



RED LONE STONE JOY 38A DAM OF LOT 36





## 37 RED LONE STONE RIP 107J

Red Angus 2205349 LNK 107J Jan 2, 2021

RED COMBEST JUGGERNAUT 1613D  
**RED TER-RON FARLEY 5F**  
 RED TER-RON BOBBIE 42B  
 RED LONE STONE MOONSHINE 129B  
**RED LONE STONE CHETA 33E**  
 RED SIX MILE CHETA 472U

**PERF** BW **72** AWW **740** AYW **1074**  
**EPDs** CE **6** BW **-0.7** WW **37** YW **63**  
 Milk **23** MCE **10**

**Parent Verified.** Here's a bull that is very loose hided and walks out with such an easy stride. I would recommend this bull for heifers. Easy calving on both sides of his pedigree.



RED LONE STONE CHETA 33E DAM OF LOT 37



## 38 RED LONE STONE FARLEY 110J

Red Angus Pending LNK 110J Jan 5, 2021

RED COMBEST JUGGERNAUT 1613D  
**RED TER-RON FARLEY 5F**  
 RED TER-RON BOBBIE 42B  
 RED LAZY M REDMAN 306A  
**RED LONE STONE RHODA 44E**  
 RED LONE STONE RHODA 89C

**PERF** BW **75** AWW **662** AYW **1115**  
**EPDs** CE - BW - WW - YW - Milk - MCE -

**Parent Verified.** Another bull that can be used on heifers. Redman and Prime Rib on the Maternal side sure helped with birth weight.



## 39 RED LONE STONE FARLEY 140J

Red Angus 2205357 LNK 140J Jan 12, 2021

RED COMBEST JUGGERNAUT 1613D  
**RED TER-RON FARLEY 5F**  
 RED TER-RON BOBBIE 42B  
 RED LONE STONE MOONSHINE 129B  
**RED LONE STONE BLACKBIRD 49E**  
 RED LAURON BLACKBIRD 11B

**PERF** BW **79** AWW **740** AYW **1101**  
**EPDs** CE **5** BW **0.6** WW **27** YW **52** Milk **20** MCE **10**

**Parent Verified.** Definitely use this bull on heifers.



## 40 RED LONE STONE FARLEY 105J

Red Angus 2204658 LNK 105J Jan 7, 2021

RED COMBEST JUGGERNAUT 1613D  
**RED TER-RON FARLEY 5F**  
 RED TER-RON BOBBIE 42B  
 RED HB GENERAL 103N  
**RED LONE STONE TAM 1T**  
 RED MYALTA M RIA 67R

**PERF** BW **78** AWW **740** AYW **1033**  
**EPDs** CE **7** BW **-1.2** WW **15** YW **33** Milk **33** MCE **9**

Could use this bull on heifers. He was his Dam's 13th and last calf. Designated elite in 2013. She had a calf every year, never missed and never lost a calf. We sold six bull calves off her. This guy will be the seventh.



## 41 RED LONE STONE COBRA 162J

Red Angus 2204666 LNK 162J Jan 24, 2021

RED T-K COBRA 34B

RED T-K IMPRINT 150D

RED CLAY INDIGO BABY 233U

RED DIMLER INDEED 92R

RED LONE STONE RAQUEL 14W

RED MYALTA 225M RAQUEL74R

PERF BW 95 AWW 740 AYW 1290

EPDs CE -3 BW 2.9 WW 50 YW 87 Milk 24 MCE 3

**Parent Verified.** Definitely a cow bull here. We used his sire on heifers with no issue, but he comes out of a big Indeed cow. 162J is a big rugged individual with huge length of spine. A potential herd sire of those big strapping x-bred steers.



## 42 RED LONE STONE AUTO 156J

Red Angus 2261759 LNK 156J Jan 20, 2021

RED BRYLOR AUTOMATIC 95B

RED LWNBRG AUTOMATIC 49G

RED TED WANDER 33A

RED BAR-E-L AGENT 173A

RED LONE STONE BIEBIRD 86F

RED LONE STONE HONEY 92Y

PERF BW 98 AWW 740 AYW 1060

EPDs CE -7 BW 5 WW 42 YW 72 Milk 20 MCE 5

**Parent Verified.** I think very highly of the Dam of this bull. She has given us a daughter we sold to Corn Ranches and two male calves. Both will be sold in our bull sales. She has a fabulous tucked up udder with small teats.



## 43 RED LONE STONE AUTO 161J

Red Angus 2230496 LNK 161J Jan 24, 2021

RED BRYLOR AUTOMATIC 95B

RED LWNBRG AUTOMATIC 49G

RED TED WANDER 33A

RED BAR-E-L AGENT 173A

RED LONE STONE FAYETTE 74F

RED MYALTA GM MADEL 33M

PERF BW 90 AWW 740 AYW 1046

EPDs CE -1 BW 3 WW 28 YW 56 Milk 17 MCE 8

**Parent Verified.** A smooth made, eye pleasing bull out of Automatic. Only able to use him one season as he got hurt after his first year breeding.



## 44 RED LONE STONE AUTO 158J

Red Angus 2230491 LNK 158J Jan 22, 2021

RED BRYLOR AUTOMATIC 95B

RED LWNBRG AUTOMATIC 49G

RED TED WANDER 33A

RED GLESBAR KNIGHT 9C

RED LONE STONE SELMA 55F

RED LONE STONE SELMA 20Z

PERF BW 93 AWW 740 AYW 1133

EPDs CE -6 BW 5.3 WW 43 YW 84  
Milk 15 MCE 6

**Parent Verified.**







## 45 RED LONE STONE AUTO 123J

Red Angus 2230490 LNK 123J Jan 4, 2021

RED BRYLOR AUTOMATIC 95B  
**RED LWNBRG AUTOMATIC 49G**  
 RED TED WANDER 33A  
 RED GLESBAR KNIGHT 9C  
**RED LONE STONE POTEET 44F**  
 RED GEIS POTEET 45'11

**PERF** BW **82** AWW **740** AYW **1115**  
**EPDs** CE **0** BW **3.6** WW **36** YW **75** Milk **20** MCE **9**

**Parent Verified.** I would consider the Automatic herd sire to be a cow bull and I would mark his sons the same way. This bull comes out of a Poteet female, an amazing cow line in our herd.



## 46 RED LONE STONE FIRESIDE 148J

Red Angus 2205672 LNK 148J Jan 14, 2021

RED ANDRAS FUSION R236  
**RED LWNBRG FIRESIDE 77G**  
 RED LWNBRG PEACEMAKER 92B  
 RED MAR MAC TOP SECRET 28D  
**RED LONE STONE HONEY 949G**  
 RED LONE STONE HONEY 35C

**PERF** BW **85** AWW **740** AYW **1131**  
**EPDs** CE **3.5** BW **0.4** WW **45** YW **78** Milk **23** MCE **3**

**Sire Verified.**



## 47 RED LONE STONE REDMAN 149J

Red Angus 2205645 LNK 149J Jan 16, 2021

RED RMJ REDMAN 1T  
**RED LAZY M REDMAN 306A**  
 RED SIX LINE OLIVIA 456U  
 RED T-K IMPRINT 150D  
**RED LONE STONE CHETA 26G**  
 RED LONE STONE HEATHER 37C

**PERF** BW **75** AWW **740** AYW **1083**  
**EPDs** CE **9** BW **-1.8** WW **32** YW **53** Milk **21** MCE **6**

**Sire Verified.** Definitely would use this bull on heifers.

# THANK YOU

to our 2022 bull buyers! \*denotes repeat customer

Airbo Farms \*  
 Kevin Semler\*  
 Neil Letts\*  
 Mullen Land and Cattle  
 Scottford Colony\*  
 Ewart Farms \*  
 Lorne Hartum \*  
 Sunny Valley Farm \*  
 Gerig Farm\*  
 Harold Galliford  
 Jordan Livestock \*

Warren Day\*  
 Blume Farms  
 Branden Ranches  
 Sheldon Blume\*  
 Anderson Farms\*  
 Ross White  
 Klassen Farms  
 David Snyder\*  
 Tyler Airth\*  
 St John Simmental  
 Randy Strach\*

Schatz Simmental\*  
 King Ranch  
 Adam Shay  
 Tyler Kampies  
 Don Borle\*  
 High Kik Ranch  
 Ron Brown  
 Luke Boelman\*  
 Brad Dallyn





48

**LONE STONE CASH 203K**

Polled Fullblood P1390384 LNK 203K Jan 3, 2022

JNR'S CONCEPT  
**JNR CASHMERE**  
 JNR SHELAIN

WOLFES TITAN FF 51T  
**LONE STONE MS EVAN 73X**  
 LONESTONE MISS ROM 133P

PERF BW **104** AWW **686**  
 EPDs CE **-0.7** BW **7.9** WW **77.2** YW **106.6**  
 Milk **27.5** MCE **-1.5** MWW **66.1**



LONE STONE MS EVAN 73X DAM OF LOT 48

100% Full Fleckvieh. Sire Verified. Polled.

This will be the 6th bull calf out of 73X that has been sold in our bull sales. I just love this cow. She does not look like a 12-year-old cow. Hoping for a few more calves out of her yet. 203K has a lot of eye appeal and in true Cashmere fashion walks out cleanly and freely.



49

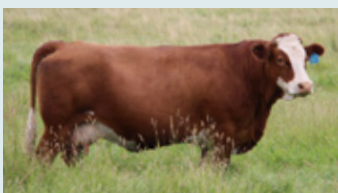
**LONE STONE CASH 215K**

Polled Fullblood P1392491 LNK 215K Jan 10, 2022

JNR'S CONCEPT  
**JNR CASHMERE**  
 JNR SHELAIN

WOLFES TITAN FF 51T  
**LONE STONE MS EVAN 13Y**  
 LONE STONE MS ADONIS 21T

PERF BW **100** AWW **735**  
 EPDs CE **3.3** BW **5.3** WW **72.4** YW **98.9**  
 Milk **34.5** MCE **1.5** MWW **70.7**



LONE STONE MS EVAN 13Y DAM OF LOT 49

100% Full Fleckvieh. Sire Verified. Polled. Breeding the dam of this bull to Cashmere has been very rewarding. The first calf was a female sold to JNR Farms, the second one is in our herd, and the third is this fine looking fellow. Cashmere puts hair on all his progeny, even cows with South African Genetics. This bull is going to make some terrific females.



50

**LONE STONE MAXIMUM 87J**

Polled Fullblood P1392546 LNK 87J Dec 28, 2021

JNR'S CONCEPT  
**JNR CASHMERE**  
 JNR SHELAIN

WYVERN BENZWEISER  
**LONE STONE MS BENZ 23C**  
 LAZY RS MISS YOGA FF

PERF BW **103** AWW **816**  
 EPDs CE **2.7** BW **7.2** WW **84.9** YW **115.9** Milk **36.3** MCE **1.6** MWW **78.8**



LONE STONE MS BENZ 23C DAM OF LOT 50

100% Full Fleckvieh. Sire Verified. Polled. This will be the third bull we have sold out of 23C. He is long, he is deep, and he is hairy. He will likely be the heaviest yearling bull in his peer group.





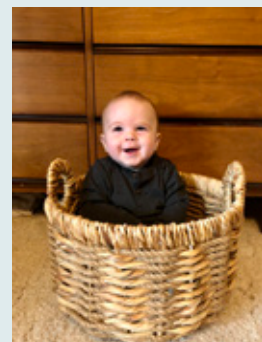
## 51 LONE STONE CASH 233K

Polled Fullblood P1392693 LNK 233K Jan 18, 2022

JNR'S CONCEPT  
JNR CASHMERE  
JNR SHELAIN  
APLX ENVOY 2Y  
LONE STONE MS ENVOY 72D  
MS MI RENA 48R

PERF BW 105 AWW 738  
EPDs CE 1 BW 6.8 WW 79.7 YW 111.3  
Milk 30.4 MCE 1 MWW 70.3

100% Fleckvieh. Sire Verified. Polled.



## 52 LONE STONE MARQUIS 89J

Fullblood 1392904 LNK 89J Dec 30, 2021

VIRGINIA MARQUEE 423D  
MJB HADRIAN 39H  
MJB TILLY 2T

JB CDN RANCHERO 1631  
LONE STONE MARITA 14G  
WOLFES CAITLIN FF37C

PERF BW 82 AWW 763  
EPDs CE 4.4 BW 5 WW 87.6 YW 124.1 Milk 41.6 MCE 1.3 MWW 85.4

100% Fleckvieh. Sire Verified. Horned. Non-Diluter. In 2020 I attended the Southern Round-Up sale where I inadvertently purchased a 10-month-old bull calf from Okotoks Fleckvieh Group (that means I bought a male instead of the female I intended to get). Well, this calf has grown into quite the bull. He's a big bull, a refreshing change from the majority medium framed bulls we all mostly raise. This will be the first calf sold out of Hadrian. He has brought us lower birthweight; great hair and the red color is very deep.



## 53 LONE STONE FUTURE 94K

Fullblood 1392774 LNK 94K Jan 2, 2022

VIRGINIA MARQUEE 423D  
MJB HADRIAN 39H  
MJB TILLY 2T

WYVERN BENEDICT FF  
CAREW'S FUTURE 24F  
CAREW'S CORI 8C

PERF BW 88 AWW 714  
EPDs CE 4.4 BW 5.4 WW 75.9 YW 105.3 Milk 42 MCE -0.4 MWW 80

100% Fleckvieh. Sire Verified. Horned. Non-Diluter. Continuing with extolling the virtues of MJB Hadrian, I must say I absolutely love his physical makeup. He's big and long spined with a very generous hip. He walks smooth & free on a big sized foot. I've had people ask me; do I mind that he's not double goggled. I just say sure he is, just one goggle slipped below his eye. For me, he has just the right amount of bone. We used Hadrian on a limited number of young cows, and we were presented with only 4 bulls out of 14 calves. Two for this sale and 2 saved for 2-year-old.



## 54 LONE STONE MANNY 243K

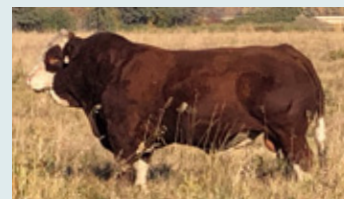
Fullblood 1392708 LNK 243K Jan 24, 2022

OSF CLASSIC 11C  
SPRUCEBURN FULL MOON 48F  
SPRUCEBURN STARSTRUCK

APLX ENVOY 2Y  
LONE STONE EILEEN 75E  
DFM BARB 412B

PERF BW 94 AWW 753  
EPDs CE 4.2 BW 5.8 WW 76.1 YW 114.3  
Milk 39.6 MCE 4.2 MWW 77.7

100% Fleckvieh. Sire Verified. Horned. Non-Diluter. Here is a moderate sized bull out of our Full Moon herd sire. A bull that really adds muscle to his calves. Our Full Moon sire is marvelous for producing females.



SPRUCEBURN FULL MOON 48F  
SIRE OF LOT 22 & 54



## 55 LONE STONE CALLAHAN 235K

Fullblood 1392544 LNK 235K Jan 18, 2022

SIBELLE DIRTY HARRY 25Z  
WCC WELLS' CALLAHAN 1C  
WCC WELLS' ULTRIX 808U

LONE STONE REGIO 95A  
LONE STONE MS REGIO 10C  
LONE STONE MS HUGO 19Y

PERF BW 80 AWW 772  
EPDs CE 6.4 BW 4.2 WW 76.1 YW 106 Milk 36.5 MCE 2.3 MWW 74.6

100% Fleckvieh. Sire Verified. Polled. Non-Dilutor. This guy is a twin to another bull. He has really developed nicely in the yearling pen. He has an easy-going manner so should be a treat to work with. Make sure to check out the video of this guy!



WCC WELLS' CALLAHAN 1C

## 56 LONE STONE CALLAHAN 201K

Fullblood 1392549 LNK 201K Jan 1, 2022

SIBELLE DIRTY HARRY 25Z  
WCC WELLS' CALLAHAN 1C  
WCC WELLS' ULTRIX 808U

APLX ENVOY 2Y  
LONE STONE MS ENVOY 36C  
LONE STONEMS EVAN 16X

PERF BW 95 AWW 765  
EPDs CE 4.2 BW 5.9 WW 82.8 YW 113.4 Milk 34.6 MCE 0 MWW 76

100% Fleckvieh. Sire Verified. Horned. What a chunk of beef this guy is. Really wide across the back with a big hip on him. If you like a star faced bull, this guy fits the bill.



## 57 LONE STONE CALLAHAN 222K

Fullblood 1392539 LNK 222K Jan 13, 2022

SIBELLE DIRTY HARRY 25Z  
WCC WELLS' CALLAHAN 1C  
WCC WELLS' ULTRIX 808U

GREAT GUNS RAMSES 1X  
BIG SKY BOBBI JO 300B  
BLCC MISS RENEGADE 394X

PERF BW 102 AWW 848  
EPDs CE 2.9 BW 6.3 WW 86.9 YW 121 Milk 44.5 MCE -0.7 MWW 88

100% Fleckvieh. Sire Verified. Horned. Non-Dilutor. Nathan purchased the Dam of this bull from Big Sky and she has really proven herself to be valuable. She is the maternal grandmother of Nathan's high selling Bred Heifer this fall to Beechinor Land & Cattle. Two females are in our herd and two bulls have gone to work in our commercial customer's herds. We've watched this bull all summer develop into an all-around top bull. He has great lines, terrific hair coat and the kind of muscle on his butt that will really look good on his male calves. Genetically a calf I'd really recommend.



BIG SKY BOBBI JO 300B DAM OF LOT 57





## 58 LONE STONE CALLAHAN 204K

Fullblood 1392540 LNK 204K Jan 4, 2022

SIBELLE DIRTY HARRY 25Z  
**WCC WELLS' CALLAHAN 1C**  
 WCC WELLS' ULTRIX 808U  
 SOUTHSEVEN MR ADONIS 92Z  
**VIRGINIA BETH 400B**  
 BROCK XTREME

PERF BW **92** AWW **703**  
 EPDs CE **6.6** BW **4.4** WW **66.5** YW **90.7**  
 Milk **39.8** MCE **3.7** MWW **73.1**



VIRGINIA BETH 400B DAM OF LOT 58

100% Fleckvieh. Sire Verified. Horned.

Non-Dilutor. There are two half siblings of this guy working in our herd. A very similar styled calf to lot 57. We sold a half sister as well to Blue Zone Livestock in Manitoba in our 2021 Female sale.



## 59 LONE STONE CALLAHAN 227K

Fullblood 1392711 LNK 227K Jan 15, 2022

SIBELLE DIRTY HARRY 25Z  
**WCC WELLS' CALLAHAN 1C**  
 WCC WELLS' ULTRIX 808U

JNR'S CAEDEN  
**LONE STONE JOLA 16F**  
 LFS POL EDEN 62U

PERF BW **90** AWW **717**  
 EPDs CE **5.7** BW **4.7** WW **71.6** YW **99.5** Milk **40** MCE **1.7** MWW **75.8**

100% Fleckvieh. Sire Verified. Horned. Non-Dilutor. This calf goes back to Make M Polled on his maternal lineage. His Dam is an Anchor D Viper granddaughter. We sold a bull out of her to the Blume family at Vega at last bull sale. This bull has lots of potential.



100% Fleckvieh. Sire Verified. Horned. Non-Dilutor. Love, love, love the mother of this bull. Sold her first calf to Ruch Land & Cattle and have a daughter working for us. Paternal side of Dam, the Baron line is good on udders and maternal side of Dam is El Nino also makes good udders.

## 60 LONE STONE CALLAHAN 76K

Fullblood 1392705 LNK 76K Jan 11, 2022

SIBELLE DIRTY HARRY 25Z  
**WCC WELLS' CALLAHAN 1C**  
 WCC WELLS' ULTRIX 808U

BLCC MR BARON 326Z  
**LONE STONE LEXA 28E**  
 LONE STONE EL NINO 3T

PERF BW **99** AWW **771**  
 EPDs CE **3.9** BW **5.8** WW **78.4** YW **106** Milk **39.7** MCE **-1.4** MWW **78.9**





## 61 LONE STONE GERONIMO 210K

Fullblood 1392552 LNK 210K Jan 7, 2022

BRINK GERONIMO A310  
WOLFE ENOCH FF 818E  
WOLFE ANGEL FF 818A

APLX ENVOY 2Y  
LONE STONE MS ENVOY 42C  
MISS LONESTONE SADIE 38S

PERF BW 107 AWW 773  
EPDs CE -0.6 BW 8.3 WW 82.9 YW 120.8 Milk 40.7 MCE 0.1 MWW 82.2



LONE STONE MS ENVOY 42C DAM OF LOT 61

Full Fleckvieh. Sire Verified. Horned. Non-Dilutor. This bull will really jump out at you when you step into our yearling bull pen. Stature and presence to spare! His Envoy dam has had three sons in the last 3 bull sales. This makes number 4.

## 62 LONE STONE GERONIMO 206K

Fullblood 1392696 LNK 206K Jan 5, 2022

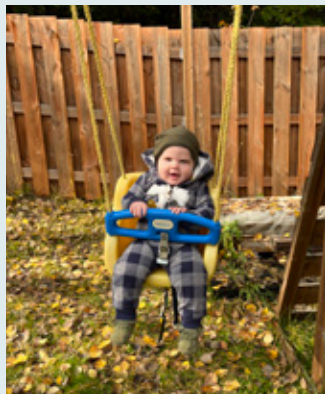
BRINK GERONIMO A310  
WOLFE ENOCH FF 818E  
WOLFE ANGEL FF 818A  
ABR SIR ARNOLDS IMAGE  
LONE STONE MS IMAGE 98D  
BMS DOLLY 40B

PERF BW 112 AWW 729  
EPDs CE 0.5 BW 8.2 WW 79.4 YW 111.8  
Milk 39.3 MCE 1.5 MWW 79



LONE STONE MS IMAGE 98D DAM OF LOT 62

100% Fleckvieh. Sire Verified. Horned. Non-Dilutor. We have 2 half-sisters working in the herd and sold a daughter to B6 Farms Ltd. The Dam of this bull has always produced. Ready to have her 6th calf. No throw aways.







## 63 LONE STONE ENVOY 236K

Fullblood T1403876 LNK 236K Jan 20, 2022

DORA LEE'S EQUINOX FF54T  
**APLX ENVOY 2Y**  
 DLD LADY WESTERN FF48R  
 WELLS' PLD STAMPEDER 19S  
**LONE STONE MS STAMPY 58X**  
 DLS HALLE FF53T

**PERF** BW **105** AWW  
**EPDs** CE **-1.4** BW **9** WW **85** YW **123.7** Milk **42.9** MCE **-1.6** MWW **85.4**

100% Fleckvieh. Parent Verified. Horned. This Embryo calf is a stout one. His genetics come from Envoy and 58X a Stampeder daughter we thought highly of. She is the granddam of the heifer calf, Haley, who we sold to Mason Faulkner at the Magnolia Classic in October 2022. And Envoy has many daughters in our herd.



## 64 LONE STONE DIVINE 240K

Polled Black Purebred UNR1392806 LNK 240K Jan 21, 2022

KEET'S DRIVEN 32D  
**LONE STONE DIVINE 864F**  
 LONE STONE MS ENVOY 66D  
 BLCC MR RED ROCK 67C  
**LONE STONE HANNA 43F**  
 LONE STONE MS TOMMY 73D

**PERF** BW **90** AWW **803**  
**EPDs** CE **7.3** BW **4.2** WW **85.5** YW **127.8** Milk **36.3** MCE **4.8** MWW **79.1**

Black Purebred. Sire Verified. Homo Polled. This guy's color pattern will draw your eye in the yearling pen, but then, so will his physical presence. You will note his weaning weight at over 800 lb. He is ¾ Fleckvieh in a black hide. Makes him extra special.



## 65 LONE STONE GLADIATOR 230K

Polled Black Purebred BPG1392826 LNK 230K Jan 16, 2022

W/C BANKROLL 811D  
**CIRCLE G GLADIATOR 78G**  
 LFE BS CROCUS 61C  
 BLCC MR BARON 326Z  
**LONE STONE SHELLY 8H**  
 BIG SKY SHELLY

**PERF** BW **70** AWW **698**  
**EPDs** CE **13.2** BW **0.6** WW **61.7** YW **89** Milk **31.7** MCE **6.8** MWW **62.6**

Black Purebred. Sire Verified. Polled. I would definitely use this guy on heifers. His granddam being our Big Sky Shelly out of Arnie 8M. Strong Fleckvieh genetics in this chromed up black calf.







## 66 RED LONE STONE FLEXER 77J

Red Angus 2261985 LNK 77J Dec 25, 2021

RED MRLA FLEX 49Z  
RED LWNBRG FLEX 79B  
RED TED CHATEAU 6U

RED MAR MAC DELEGATE 72D  
RED DSM SHADY LADY 804F  
RED DSM SHADY LADY 301A

PERF BW **90** AWW **740**  
EPDs CE **1** BW **2.1** WW **60** YW **90** Milk **26** MCE **9**

**Parent Verified.** Purchased the dam of this bull from Dersta Farms at Red Round Up a few years back. She's been a good buy. Very fertile, always calves in the first cycle and the calves are good. This guy especially. If you've missed getting a Llewenburg Flex son, don't pass up on this one.

## 67 RED LONE STONE FLEX 106K

Red Angus 2261983 LNK 106K Jan 5, 2022

RED MRLA FLEX 49Z  
RED LWNBRG FLEX 79B  
RED TED CHATEAU 6U  
RED LAZY M REDMAN 306A  
RED LONE STONE SUIJI LASS 73E  
RED LONE STONE RAQUEL 14W

PERF BW **95** AWW **740** AYW  
EPDs CE **0** BW **3.3** WW **50** YW **77** Milk **19** MCE **9**

**Sire Verified.** This is the fourth calf for the dam of this bull. Two bulls have already gone through our bull sales. She's a cow that looks to have a long lifetime at Lone Stone. Always weaning a calf over 700 lb. She's a Redman daughter. They have the best feet and tight even udders.



## 68 RED LONE STONE FLEX 69J

Red Angus 2261977 LNK 69J Dec 28, 2021

RED MRLA FLEX 49Z  
RED LWNBRG FLEX 79B  
RED TED CHATEAU 6U  
RED BAR-E-L AGENT 173A  
RED LONE STONE JOANN 32E  
RED MYALTA 104H POPPY 18P

PERF BW **89** AWW **740**  
EPDs CE **1** BW **2.5** WW **45** YW **68** Milk **21** MCE **12**

**Parent Verified.** This is a nice light birthweight bull but being that he is out of Flex, I am reluctant to recommend him as a true heifer bull. Trying him out on a few heifers and cows is my suggestion. The Bar-E-L Agent daughters are turning into my best cows.







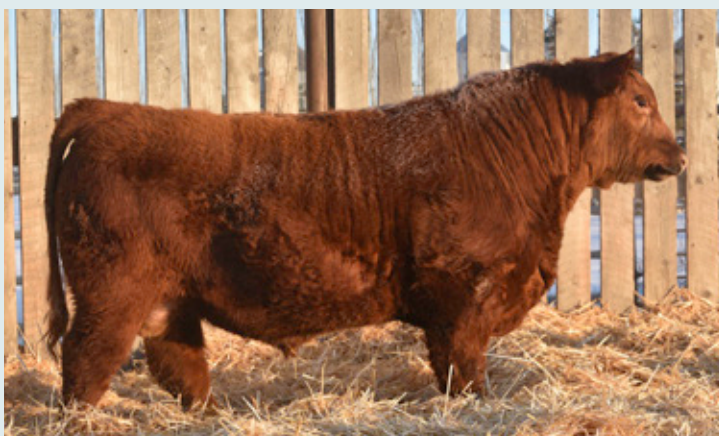
## 69 RED LONE STONE FLEX 105K

Red Angus 2261694 LNK 105K Jan 5, 2022

RED MRLA FLEX 49Z  
 RED **LWNBURG FLEX 79B**  
 RED TED CHATEAU 6U  
 RED GLESBAR FIFTY 7W  
 RED **HAZEL BLUFF ALEXA 48A**  
 RED HAZEL BLUFF ROCKALEXA 3S

**PERF** BW **91** AWW **740** AYW  
**EPDs** CE **1** BW **2.9** WW **58** YW **102** Milk **24** MCE **11**

**Parent Verified.** The Dam of 105K came to us from Hazel Bluff Red Angus. She had a couple tough years but then settled in to producing good seed stock like she should. This yearling bull has lots of capacity. Lots of length and depth of body. Should pump out some amazing steer calves.



## 70 RED LONE STONE FLEX 840J

Red Angus 2262223 LNK 840J Dec 26, 2021

RED MRLA FLEX 49Z  
 RED **LWNBURG FLEX 79B**  
 RED TED CHATEAU 6U  
 RED WILDMAN DAMAGE 930W  
 RED **LONE STONE LAURIE 3A**  
 RED MYALTA 104H PEPPER 69P

**PERF** BW **85** AWW **632**  
**EPDs** CE **0.5** BW **3.2** WW **54** YW **81** Milk **22** MCE **8.5**

**Parent Verified.** This bull is a twin to another bull. We sent his brother to the 2-year-old pen. His Dam had 4 calves 2021. Two heifer twins in Jan of 2021 whom we kept in the herd and I'm pleased to say they have both calved in early January. Another set of bulls in December of 2021 of which this guy is one. Laurie 3A is not a big tall cow but she is wide and long and weighs a lot. We've sold 4 of her bull calves.



## 71 RED LONE STONE FLEX 76J

Red Angus 2262001 LNK 76J Dec 31, 2021

RED MRLA FLEX 49Z  
 RED **LWNBURG FLEX 79B**  
 RED TED CHATEAU 6U  
 RED BAR-E-L AGENT 173A  
 RED **LONE STONE OLIVE 77F**  
 RED LONE STONE OLIVE 42Z

**PERF** BW **98** AWW **740**  
**EPDs** CE **-4** BW **4.7** WW **53** YW **88** Milk **18** MCE **9**

**Parent Verified.** 2021 breeding season was the last season using Llewensburg Flex. He has produced great males and females for us. A few Flex's will be sold as 2 year olds and that will be it.







## 72 RED LONE STONE BANKNOTE 102K

Red Angus 2261816 LNK 102K Jan 2, 2022

BLACK WHEEL BANK NOTE 16E  
RED W SUNRISE BANK NOTE 284G  
RED BROWN CREEK ELLIE 882U 49A

RED CLAY COLT 21X  
RED LONE STONE KELSEY 85C  
RED LONE STONE TATTY 83T

PERF BW 92 AWW 740  
EPDs CE -7 BW 4.8 WW 65 YW 97 Milk 21 MCE 7

**Parent Verified.** This will be the first Banknote son we are offering for sale. Sure happy with the progeny we are getting out of him. Owning him with Brewin Angus and Cinder Angus limits us a little bit but we sure have gotten some amazing calves. His Dam was designated elite in our herd in 2022.

## 73 RED LONE STONE BANKNOTE 79J

Red Angus 2261821 LNK 79J Dec 25, 2021

BLACK WHEEL BANK NOTE 16E  
RED W SUNRISE BANK NOTE 284G  
RED BROWN CREEK ELLIE 882U 49A

RED BAR-E-L AGENT 173A  
RED LONE STONE ROSETTE 48D  
RED LONE STONE HERTA 57X

PERF BW 95 AWW 740  
EPDs CE -7 BW 4.8 WW 62 YW 94 Milk 21 MCE 4

**Parent Verified.** We had a lot of Banknote daughters born in 2022. Six of them weighed over 1000 lbs a couple days ago. There is power in the Banknotes and it comes with just the right amount of bone. This big bull comes out of a big cow.



## 74 RED LONE STONE DUKE 120K

Red Angus 2262192 LNK 120K Jan 17, 2022

RED JIL DUKE 115D  
RED DOUBLE C HANDSOME 18H  
DOUBLE C REBECCA 32C

RED GLESBAR KNIGHT 9C  
RED LONE STONE ROSETTE 70G  
RED LONE STONE ROSETTE 14Z

PERF BW 75 AWW 740  
EPDs CE 4 BW 0.7 WW 46 YW 71 Milk 24 MCE 6

**Parent Verified.** This calf came small, but I do not recommend for heifers. There is lots of performance in the sire's bloodline. Based on our 2023 calving experience with Handsome, I need to caution you, and please use him on your cows.







## 75 RED LONE STONE DAKOTA 125K

Red Angus 2262008 LNK 125K Feb 1, 2022

RED RUST NORTH DAKOTA 27B  
 RED HAZEL BLUFF DAKOTA 31G  
 RED KBJ MISSIE 019Z  
 RED BAR-E-L AGENT 173A  
 RED LONE STONE BIEBIRD 86F  
 RED LONE STONE HONEY 92Y

PERF BW 79 AWW 740  
 EPDs CE 6 BW 0.2 WW 36 YW 60  
 Milk 25 MCE 9



RED HAZEL BLUFF DAKOTA 31G  
 SIRE OF LOT 75-78

Parent Verified.

I would recommend using on heifers. The Dakota bloodline is consistent with lighter birthweights and bone structure. The calves come small and grow very well. Moderate easy keeping cattle.



## 76 RED LONE STONE DAKOTA 112K

Red Angus 2262303 LNK 112K Jan 11, 2022

RED RUST NORTH DAKOTA 27B  
 RED HAZEL BLUFF DAKOTA 31G  
 RED KBJ MISSIE 019Z  
 RED LWNBRG FLEX 79B  
 RED LONE STONE LAKIMA 52H  
 RED GLESBAR LAKIMA 68Z

PERF BW 75 AWW 740  
 EPDs CE 4 BW 1.2 WW 37 YW 66 Milk 21 MCE 10

Parent Verified. The Dam of this calf is a Flex daughter. A beautiful female that may be the top female born in 2020. I would recommend using this bull on heifers.



## 77 RED LONE STONE DAKOTA 75J

Red Angus 2262203 LNK 75J Dec 22, 2021

RED RUST NORTH DAKOTA 27B  
 RED HAZEL BLUFF DAKOTA 31G  
 RED KBJ MISSIE 019Z  
 RED LAZY M REDMAN 306A  
 RED LONE STONE KENDRA 92H  
 RED LONE STONE MARLENE 13X

PERF BW 65 AWW 740  
 EPDs CE 13 BW -2.9 WW 40 YW 62 Milk 26 MCE 10

Parent Verified. I would recommend this bull on heifers. A 65 lb calf at birth is pretty tiny. Due to some good genetics and lots of milk this calf weaned in at 700 lb. Very good for a first calving heifer.



## 78 RED LONE STONE DAKOTA 89J

Red Angus 2262211 LNK 89J Dec 28, 2021

RED RUST NORTH DAKOTA 27B  
 RED HAZEL BLUFF DAKOTA 31G  
 RED KBJ MISSIE 019Z  
 RED LWNBRG FLEX 79B  
 RED LONE STONE KELSEY 94H  
 RED LONE STONE KELSEY 34A

PERF BW 61 AWW 740  
 EPDs CE 9 BW -1.2 WW 46 YW 72 Milk 27 MCE 11

Sire Verified. I would recommend this bull for heifers. Another amazing Flex Dam, whose future looks bright at Lone Stone.



# 79 RED LONE STONE FARLEY 128K

Red Angus 2262300 LNK 128K Feb 7, 2022

RED COMBEST JUGGERNAUT 1613D

RED TER-RON FARLEY 5F

RED TER-RON BOBBIE 42B

RED SIX MILE CUSTOM MADE 505C

RED LAURON APRIL 158G

RED LAURON APRIL 183A

PERF BW 88 AWW 740

EPDs CE -3 BW 3.1 WW 34 YW 64 Milk 30 MCE 7

Sire Verified. It's my last footnote of the catalogue. I am running out of words! Great cow. Bought from Lauren Red Angus. Purchase with confidence!



## 20 COMMERCIAL OPEN REPLACEMENT FEMALES

consigned by

Andrew and Shawna Wieler  
Pemlock Simmentals  
Lone Stone Farms







## TERMS & CONDITIONS

**TERMS** The terms of the sale are cash, cheque, e-transfer, or wire and are due at the time of sale, unless other arrangements have been made between buyer and seller prior to the sale. Transcon reserves the right to charge interest at a rate of 2% per month on overdue accounts. The right of property shall not pass until after settlement is made. Transcon Livestock Corp. reserves the right to require a certified cheque as settlement before releasing any sale cattle. Should any purchaser fail to settle for their purchase Transcon Livestock Corp. reserves full power to resell the animal to the best advantage either publicly or privately, without further notice. Any loss arising from such resale together with keep and all other expenses shall be payable by the defaulter. All settlements must be made with the clerks of the sale before any cattle will be released. Transcon Livestock Corp and/or the Auctioneer shall have the right to refuse bids from anyone who has a previous record of default in payment or who has not made proper credit clearance prior to the sale with the owner or Sale Managers.

**BID** No private sales will be allowed except as otherwise provided for in the terms and conditions. No by-bidding will be permitted.

**SALES TAXES** Applicable sales taxes will be charged on semen, embryos, and trucking fees (if listed), respective to the home province of the buyer, not the seller.

**DISPUTES** In cases of disputes, bidding will be reopened between the parties involved. If no further bid is made the buyer will be the person from whom the auctioneer accepted the last bid. The auctioneer's decision in such matters will be final.

**PURCHASER'S RISK** Each animal becomes the risk of the purchaser as soon as sold. Animals will be cared for at the purchaser's risk for a reasonable length of time.

**INSURANCE** Each animal becomes the risk of the purchaser at the time of sale and should be insured. Animals returning to the seller's farm must be insured.

**US BUYERS** There is an additional charge (approximately \$300.00 US dollars) that will be applied to each animal purchased. This covers documentation, vet inspections/testing required to export. This cost does not include transportation or brokerage which is the responsibility of the buyer.

**CATTLE PICTURES AND INFORMATION PROVIDED** The images in this catalogue are believed to be accurate representations of the individual animals and the information contained in this catalogue is provided by the seller and believed to be true and accurate. Transcon Livestock Corp. and catalogue designers/producers assume no responsibility if the images and/or information as received have been altered or is inaccurate.

**ANNOUNCEMENTS** All announcements from the auction block will take precedence over the printed

matter in the catalogue. Buyers are therefore cautioned to pay attention to any such announcements.

**CERTIFICATE OF REGISTRY** A registration/recordation certificate issued by the applicable breed association and duly transferred will be furnished to the buyer of each animal after settlement has been made. It is the responsibility of the buyer to determine the acceptance of this certificate in any other association.

**SHIPPING** Assistance will be given in making shipment after the sale but no risk is assumed by the Sales Management or Seller. Expenses incurred are the responsibility of the purchaser. Purchasers are requested to furnish shipping instructions when making settlement.

**BREEDERS GUARANTEE** As per applicable Canadian Breed Association Breeding Guarantee guidelines. Copies are available at the sale settlement desk to be picked up by the buyer at any time. In no event shall the seller be responsible for reimbursing more than the purchase price.

**EXCEPTION TO GUARANTEE** In cases where the animal is subjected to any hormonal or surgical reproduction techniques after the sale, the guarantee shall be null and void.

**HEALTH** It is the buyer's responsibility to determine health requirements for importing any animal into his province or state. Transcon Livestock Corp. assumes no responsibility for the health status of any animal in the sale.

**EMBRYO & SEMEN** Full settlement must be made before release is done and shipping arrangements should be done within 30 days of the sale unless arrangements made between buyer and seller prior to the sale. Shipping arrangements and costs are the expense of the purchaser once release has been given.

**ACCIDENTS** Although every precaution will be taken to protect the safety and comfort of buyers, neither the Sales Management, auctioneer, consignors, or Association assumes any responsibility in this matter and disclaims any liability legal or otherwise in the event of accident or loss of property.

**RIGHTS AND OBLIGATIONS** The above terms and conditions of the sale shall constitute a contract between the buyer and the seller and be equally binding to both. Resale of animals following purchase in this sale shall constitute a separate transaction and the rights and obligations of the two parties connected thereto are not covered by the terms and conditions of this sale.

**TRANSCON LIVESTOCK CORP. IS AGENT ONLY** It is to be clearly understood that Transcon Livestock Corp. is only acting as a medium between buyer and seller and is not in any way responsible for any failure on the part of either party to live up to his obligations. Neither does Transcon Livestock Corp. assume any financial obligations to collect or enforce collection of any monies between parties. Any legal action that may be taken, in exceptional cases, must be between buyer and seller.