

TRANSCON'S  
*Peace Country*  
SIMMENTAL BULL SALE

---

*1:00 pm MST · Friday, April 4, 2025*  
VJV Auctions - Beaverlodge, AB

*- Featuring -*

**WILLOWDALE SIMMENTALS    KMR SIMMENTALS**  
**SHORT GRASS FARMS**

# WELCOME

*from the Transcon Team!*

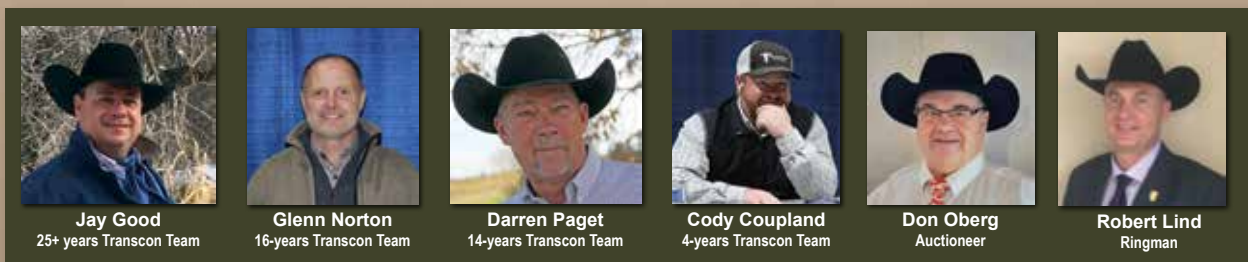
On behalf of the Smith, Malcomson, and Dillabough families, I would like to welcome you to Transcon's Peace Country Bull Sale. We invite you to join us at VJV Beaverlodge at 1:00 PM MST.

While the offering may not be large in numbers, our three consignors have once again taken another step forward, bringing even more quality to town this year. These bulls are soft-made, deep-bodied, and packed with hair. Developed responsibly, their structure and longevity remain top priorities.

This sale offers exceptional diversity, featuring red and black yearlings, along with extra-age traditional Purebreds and Fullbloods. Whether you're looking for calving ease or power, horned or polled, there's something for everyone. Bid and buy with confidence—these bulls are built to last and ready to go to work the moment the gavel drops on sale day.

If you are unable to attend on sale day but would like to discuss the offering, feel free to reach out to any member of the Transcon team. We're happy to assist with our conflict-free absentee bidding service.

*Cody Coupland*  
Cody Coupland  
Transcon Livestock Corp



*Need Some Assistance - Contact the Transcon Team!*



Head Office  
Box 300  
Sundre, AB T0M 1X0  
403-638-9377

Field Office  
Box 1944  
Minnedosa, MB R0J 1E0  
403-638-7741

*Join Us For Lunch On Sale Day!*



TRANSCON'S  
*Peace Country*  
SIMMENTAL BULL SALE

39  
Bulls

1:00 pm MST · Friday, April 4, 2025 - VJV Auctions - Beaverlodge, AB  
Fullblood, Red and Black Simmental Bulls On Offer

Sale Day Phones:

Jay Good: 403-556-5563  
Glenn Norton: 780-542-0634  
Darren Paget: 403-323-3985  
Cody Coupland: 403-877-0799

Sale Staff

Auctioneer  
Don Oberg  
Ring Staff  
Darren Paget  
Robert Lind

Hotel Accommodations

Beaverlodge Motor Inn: 780 354-2291

Pick Up Your Bull Sale Day Rebate

\$50 off per bull if picked up sale day.

Bull Delivery

All bulls can be delivered free of charge within 300 kms.  
Bulls can go back to the seller's farms to be wintered free of charge until May 1, but they must be insured.

Insurance

Will be available Sale Day

Auction Mart Sale Location:

VJV Auction Mart Google Map Pin Location:  
55°11'42.5"N 119°29'10.6"W

Online Bidding Available

Internet Bidding Available

DLMS  
www.dlms.ca  
Direct Livestock Marketing Systems

For more information call:  
Mark Shologan 780-699-5082 or Purebred Team 780-991-3025

Sale Contributors

Willowdale Simmentals

Dale & Judy Smith and Family  
Box 1555, Valleyview, AB, T0H 3N0  
Home: 780-524-2790  
Dale Cell: 780-558-9337  
Kent Cell: 780-721-1109  
Email: drjs@iwantwireless.ca  
www.willowdalecattle.com

KMR Simmentals

Kent and Robin Malcomson  
Box 207, Grovedale, AB, T0H 1X0  
Home: 587-298-5404  
Email: kent@envolveenergy.com

Short Grass Farms

Kurtis, Chelsie, Mickenzie, Tessa and  
Raigan Dillabough  
RR #1, DeBolt, AB, T0H 1B0  
Kurtis Cell: 780-831-4957  
Chelsie Cell: 780-402-9578  
Email: chelsie@iwantwireless.ca

Lots  
1-22

Lots  
23-31

Lots  
32-39

*Special Thanks to All of our  
Bidders and Buyers over the years!*

*Your support in our programs  
is greatly appreciated!*

*We look forward to visiting with  
you on Sale Day!*

# WELCOME

from Willowdale Simmentals

We are pleased to be part of the **Peace Country Simmental Sale**. Our goal continues to be to provide quality Simmental breeding stock that is easy calving, polled and growthy.

We have a great selection of homozygous polled, red and black Simmental bulls. Our heifers did not get to make the trip to town this year, but are for sale off the farm.

Our feeding program has not changed a lot over the years. We like to grow our bulls on mainly a forage diet, giving them a better chance at longevity. We are feeding first cut alfalfa mix hay(18%CP). Just saw results from PBFA that this hay mix placed third in a recent Peace Country competition. Bulls have been getting this premium hay with a mixture of rolled oats and barley at 1% BW plus a 10% Bullseye pellet supplement.

We have a comprehensive herd health program, starting when the calves are born. All bulls are semen tested and guaranteed to be breeders. For more information contact Dale or Kent. We look forward to helping you with your bull selection.

Most of the sale animals are sired by our three walking sires:

**Spring Creek Redford 55H** - He is a dark red blaze faced, easy calving herd sire and has added strong maternal value to our herd. He has very correct legs with a big foot.

**Spring Creek Eastwood 73G** - This smooth, dark red bull, was originally bought as a heifer bull. He crosses well on the large framed cows. Progeny is super smooth. This is the last year for Eastwood bulls.

**KWA Statement 31J** - Our latest calving ease bull, to add more growth potential to the calves. He is a son of MRL Statement, who adds calving ease with the deep bodied soggy look. His donor dam D21, has been a proven matron in the Simmental breed. There are five sons in the sale that form an impressive group of calving ease bulls that are suitable to breed heifers.

*Dale & Judy*



*"Our Working Crew"*

Dale & Judy Smith and Family

Home: 780-524-2790

Dale Cell: 780-558-9337

Kent Cell: 780-721-1109

Email: [drjs@iwantwireless.ca](mailto:drjs@iwantwireless.ca)

[www.willowdalecattle.com](http://www.willowdalecattle.com)



## HOMO POLLED SIRE VERIFIED DILUTOR FREE

- A bull that checks all the herd bull requirements. He is solid red, deep ribbed with extra rear muscle expression and a wide top line, along with being very smooth and loose hided.
- Our #2 performing bull for weaning and yearling weights.
- His numbers show excellent calving ease and low birth weight; top 10% EPD's. Then add his weaning and yearling EPD's that rank in the top 2%. He is green for 12 of 13 traits.
- His sire **WS Epic** is also a calving and performance bull. He is out of a first calf Redford heifer. WOW. Purebred herd bull potential here!

## WILLOWDALE RED EPIC 3M

PG1478845 / DRJS 3M / January 11, 2024 / Red Polled Purebred

WS ALL ABOARD B80  
WS EPIC E152  
WS MAJESTIC Z133

SPRINGCREEK REDFORD 55H  
WILLOWDALE NEWYORK 13K  
WILLOWDALE NEWYORK 37F

WS ALL-AROUND Z35  
WS LITTLE SISTER W37  
GW RED COAT 099TS  
WS MOTHER LODGE W21

SPRINGCREEK LADIES MAN 90E  
IPU 308Z POCAHONTAS 25E  
WS PRIME BEEF Z8  
WILLOWDALE NEWYORK 108B

### PERFORMANCE

BW	ADJ. WW	ADJ. YW
82 lbs	828 lbs	1334 lbs

### EPD's

CE	BW	WW	YW	M	MCE	MWWT
12.8	0.8	102.2	153.6	26.9	7.3	78.0

1





**HOMO POLLED  
SIRE VERIFIED  
DILUTOR FREE**

- A big solid red bull with a white star, very smooth and deep ribbed muscular bull. 22M will catch your eye with his excellent hair coat, correct set to his feet & legs and the power in his overall mass.
- He was second in the pen for A.D.G. @ 3.46 lbs/day. Above average for calving ease and birth weight EPD's. He is an awesome cow bull.
- His mother is a red baldy cow with an excellent udder that raises keeper calves every year.

**WILLOWDALE REDFORD 22M**

PG1482365 / DRJS 22M / January 22, 2024 / Red Polled Purebred

**SPRINGCREEK LADIES MAN 90E**  
**SPRINGCREEK REDFORD 55H**  
 IPU 308Z POCAHONTAS 25E  
  
 MRL 37C  
**WILLOWDALE RED HEAT 95F**  
 WILLOWDALE RED HEAT 51B  
  
**SPRINGCREEK LINER 56U**  
**SPRINGCREEK BROOKE 68Z**  
**SPRINGCREEK SPARK PLUG**  
 IPU 105L POCAHONTAS 308Z  
  
 MRL 91Y  
**MRL MISS 470U**  
**ANCHOR D IMAX 250Y**  
**WILLOWDALE RED HEAT 10Z**

**WILLOWDALE REDFORD 33M**

PG1482666 / DRJS 33M / January 25, 2024 / Red Polled Purebred

**SPRINGCREEK LADIES MAN 90E**  
**SPRINGCREEK REDFORD 55H**  
 IPU 308Z POCAHONTAS 25E  
  
 MRL WESTERN FORCE 251B  
**WILLOWDALE NEWYORK 41G**  
 WILLOWDALE NEWYORK 108B  
  
**SPRINGCREEK LINER 56U**  
**SPRINGCREEK BROOKE 68Z**  
**SPRINGCREEK SPARK PLUG**  
 IPU 105L POCAHONTAS 308Z  
  
 MRL 67X  
**MRL MISS 2543Z**  
**IPU 52N ACCELERATOR 206U**  
**WILLOWDALE NEWYORK 26N**

**PERFORMANCE**

BW	ADJ. WW	ADJ. YW
90 lbs	750 lbs	1304 lbs

**EPD's**

CE	BW	WW	YW	M	MCE	MWWT
9.3	1.4	72.7	103.7	37.4	7.1	73.8

**PERFORMANCE**

BW	ADJ. WW	ADJ. YW
107 lbs	794 lbs	1386 lbs

**EPD's**

CE	BW	WW	YW	M	MCE	MWWT
6.1	4.7	93.1	144.9	34.4	5.4	80.9



**POLLED (Small Scurs)**

- A larger framed, powerful, red baldy bull. He was our top indexing bull at weaning, top gaining bull as a yearling, giving him remarkable weaning and yearling EPD's; top 10% for the breed.
- Lots of length and muscle mass in this herd bull.
- His **MRL Western Force** mother has raised powerful progeny every year.
- His half sister was our high selling bred heifer in last fall's Ladies of the Peace Sale, going to **Sunny Valley Simmentals**.
- A bull for those serious cattlemen, looking to put pounds into their calves.



### WILLOWDALE REDFORD 78M

PG1483125 / DRJS 78M / February 13, 2024 / Red Polled Purebred

4

SPRINGCREEK LADIES MAN 90E  
 SPRINGCREEK REDFORD 55H  
 IPU 308Z POCAHONTAS 25E  
 CMS KEYSTONE 332A  
 WILLOWDALE RED BAKER 14E  
 WFL MISS RED BAKER 394A

SPRINGCREEK LINER 56U  
 SPRINGCREEK BROOKE 68Z  
 SPRINGCREEK SPARK PLUG  
 IPU 105L POCAHONTAS 308Z  
 MAF R HORIZON 7Y  
 CMS HEIRLOOM 112Y  
 MUIRHEADS LIGHTS OUT 4Y  
 WFL MS RED BAKER 1096X

PERFORMANCE			EPD's						
BW	ADJ. WW	ADJ. YW	CE	BW	WW	YW	M	MCE	MWWT
106 lbs	776 lbs	1203 lbs	7.7	3.5	77.9	107.0	32.9	5.6	71.9

**HOMO POLLED, SIRE VERIFIED, DILUTOR FREE**

- A younger bull with a liver red hair coat that catches your attention. A pen favourite and a bull with a very balanced make-up.
- These **Spring Creek Redford** sons are all very consistent in their profile.
- Was our #4 ranked bull at weaning time for WPDA @ 3.77 lbs/day. Lots of maternal strength here.



### WILLOWDALE REDFORD 79M

PG1483126 / DRJS 79M / February 13, 2024 / Red Polled Purebred

5

SPRINGCREEK LADIES MAN 90E  
 SPRINGCREEK REDFORD 55H  
 IPU 308Z POCAHONTAS 25E  
 CMS KEYSTONE 332A  
 WILLOWDALE RED KEYSTONE 96C  
 WILLOWDALE XCELERATOR 22X

SPRINGCREEK LINER 56U  
 SPRINGCREEK BROOKE 68Z  
 SPRINGCREEK SPARK PLUG  
 IPU 105L POCAHONTAS 308Z  
 MAF R HORIZON 7Y  
 CMS HEIRLOOM 112Y  
 IPU 52N ACCELERATOR 206U  
 WILLOWDALE TORY 46T

PERFORMANCE			EPD's						
BW	ADJ. WW	ADJ. YW	CE	BW	WW	YW	M	MCE	MWWT
92 lbs	732 lbs	1252 lbs	7.8	2.9	75.8	105.0	32.0	5.6	69.9

**HOMO POLLED, SIRE VERIFIED, DILUTOR FREE**

- A sharp looking red bull with a good hair coat and a big white face. Smooth profile with good feet and legs.
- His mother has raised a number of bulls that we have sold to area producers.
- Yearling WPDA of 3.42lbs/day, along with average birth weight and calving EPD's



### WILLOWDALE REDFORD 16M

PG1483111 / WDJS 16M / January 28, 2024 / Red Polled Purebred

6

SPRINGCREEK LADIES MAN 90E  
 SPRINGCREEK REDFORD 55H  
 IPU 308Z POCAHONTAS 25E  
 RF CAPTAIN BLACK 430B  
 WILLOWDALE BLK KARA 9F  
 WILLOWDALE BLK KARA 22C

SPRINGCREEK LINER 56U  
 SPRINGCREEK BROOKE 68Z  
 SPRINGCREEK SPARK PLUG  
 IPU 105L POCAHONTAS 308Z  
 SVS CAPTAIN MORGAN 11Z  
 TLG FLIRTIN WITH YOU  
 OLF OTIS Y43  
 WILLOWDALE BLK KARA 11A

PERFORMANCE			EPD's						
BW	ADJ. WW	ADJ. YW	CE	BW	WW	YW	M	MCE	MWWT
89 lbs	712 lbs	1197 lbs	12.2	0.4	75.6	108.0	26.9	9.6	64.7

**HOMO POLLED, SIRE VERIFIED, DILUTOR FREE**

- Solid, dark red bull from a black cow.
- Lots of muscle expression with a deep rib profile on a moderate frame.
- Ranks in the top 15% for calving ease and birth weight. Lots of potential here!





## WILLOWDALE REDFORD 11M

SG1482366 / WDJS 11M / January 22, 2024 / Purebred

7

**SPRINGCREEK LADIES MAN 90E** **SPRINGCREEK LINER 56U**  
**SPRINGCREEK REDFORD 55H** **SPRINGCREEK BROOKE 68Z**  
**IPU 308Z POCAHONTAS 25E** **SPRINGCREEK SPARK PLUG**  
**SUNNY VALLEY BANKER 57Y** **LFE RS LEWIS 340W**  
**WILLOWDALE RED MOONLIGHT 1C** **SUNNY VALLEY CARRIE 50U**  
**WILLOWDALE MOONLIGHT 16A** **IPU 52N ACCELERATOR 206U**  
**WILLOWDALE MOONLIGHT 29M**

### PERFORMANCE

BW	ADJ. WW	ADJ. YW	EPD's						
CE	BW	WW	YW	M	MCE	MWWT			
92 lbs	727 lbs	1197 lbs	9.4	3.1	72.1	100.0	29.3	6.0	65.4

### POLLED (Scurs), SIRE VERIFIED, DILUTOR FREE

- A quiet disposition, in this deep bodied, solid red bull with a moderate frame.
- Mothered by a very deep bodied **Sunny Valley Banker** daughter. She was also the grandmother to our high selling bull in last year's sale
- He is above average for calving ease.



## WILLOWDALE REDFORD 19M

PG1483124 / WDJS 19M / February 12, 2024 / Red Polled Purebred

8

**SPRINGCREEK LADIES MAN 90E** **SPRINGCREEK LINER 56U**  
**SPRINGCREEK REDFORD 55H** **SPRINGCREEK BROOKE 68Z**  
**IPU 308Z POCAHONTAS 25E** **SPRINGCREEK SPARK PLUG**  
**IPU 105L POCAHONTAS 308Z**  
**OLF ODIN U5** **ELLINGSON LEGACY M229**  
**WILLOWDALE BLK KISSES 6B** **OLF LADY TRIATHLON S655**  
**WILLOWDALE KISSES 3Z** **IPU 52N ACCELERATOR 206U**  
**WILLOWDALE SWINGER 50S**

### PERFORMANCE

BW	ADJ. WW	ADJ. YW	EPD's						
CE	BW	WW	YW	M	MCE	MWWT			
87 lbs	757 lbs	1173 lbs	14.3	1.8	83.5	121.7	37.4	10.4	78.9

### HOMO POLLED, SIRE VERIFIED, DILUTOR FREE

- Almost the youngest bull in the pen, a bull that will continue to improve with age.
- He has a good hair coat, is long spined, deep bodied with an attractive clean head.
- An impressive, above average set of EPD's: top 5% for calving ease, top 25% for birth weight and still in the top 35% for weaning and yearling weight.
- His dam, 6B, was a superior cow with very good udder and feet. These **Odin** cows add calving ease and performance to their progeny.
- Sold a 2 year old full brother to Ryan Smith in Ponoka, and another son in last year's sale to Reid Toews.



## WILLOWDALE REDFORD 13M

PG1478860 / DRJS 13M / January 20, 2024 / Red Polled Purebred

9

**SPRINGCREEK LADIES MAN 90E** **SPRINGCREEK LINER 56U**  
**SPRINGCREEK REDFORD 55H** **SPRINGCREEK BROOKE 68Z**  
**IPU 308Z POCAHONTAS 25E** **SPRINGCREEK SPARK PLUG**  
**IPU 105L POCAHONTAS 308Z**  
**WHEATLAND AFFINITY 8196F** **CCLT ALLIANCE 91C**  
**WILLOWDALE RED SAGE 17J** **WHEATLAND LADY 913W**  
**WILLOWDALE RED SAGE 95C** **CMS KEYSTONE 332A**  
**WILLOWDALE SAGE 13Z**

### PERFORMANCE

BW	ADJ. WW	ADJ. YW	EPD's						
CE	BW	WW	YW	M	MCE	MWWT			
85 lbs	698 lbs	1168 lbs	10.7	2.7	80.1	116.4	28.6	9.0	68.7

### HOMO POLLED, SIRE VERIFIED, DILUTOR FREE

- A dark red, soggy, modest framed, eye appealing bull.
- Here is the sleeper bull in the pen. He has a nice 85lb birth weight, a nice EPD profile with above average numbers.
- His mother is a **Wheatland Affinity** daughter with moderate frame, a nice udder and teat size.
- **Affinity** added an outcross to our herd. Average numbers, while being very functional.







**HOMO POLLED  
SIRE VERIFIED** (Pending)

- 56M is one of only 2 bulls we got from **Circle G Kamden 29K**. I am very excited about this bull's genetic profile.
- He is deep bodied, has a very square hip and travels true on his feet.
- His grand dam, 7B, is the dam of the 10M bull. Lots of power on the maternal side here.
- 56M has an impressive set of EPD's and is above average for 12 of the 13 traits. The short story is, he is a calving ease bull with excellent growth numbers.

**WILLOWDALE KAMDEN 56M**

Pending / DRJS 56M / February 4, 2024 / Red Polled Purebred



PERKS POTENT 309H  
**CIRCLE G KAMDEN 29K**  
SKORS DREAM GAL 223B

BJL LETHAL DOSE 53F  
PERKS PERFECT STORM 9B  
3D RED POWER 150Z  
SKORS DREAM GAL 24X

SPRINGCREEK EASTWOOD 73G  
**WILLOWDALE RED PATT 2J**  
WILLOWDALE RED PATT 12G

SBSF EASTWOOD 22E  
SPRINGCREEK LENA 112E  
MADER THE NATIONAL 43E  
WILLOWDALE PATT 7B

**PERFORMANCE**

BW	ADJ. WW	ADJ. YW
89 lbs	759 lbs	1306 lbs

**EPD's**

CE	BW	WW	YW	M	MCE	MWWT
11.5	0.9	82.9	128.7	29.1	7.9	70.6

**WILLOWDALE KAMDEN 72M**

Pending / DRJS 72M / February 6, 2024 / Red Polled Purebred



PERKS POTENT 309H  
**CIRCLE G KAMDEN 29K**  
SKORS DREAM GAL 223B

BJL LETHAL DOSE 53F  
PERKS PERFECT STORM 9B  
3D RED POWER 150Z  
SKORS DREAM GAL 24X

MRL 37C  
**WILLOWDALE PENNY 45J**  
WILLOWDALE PENNY 107B

MRL 91Y  
MRL MISS 470U  
IPU 52N ACCELERATOR 206U  
WILLOWDALE PENNY 63P

**PERFORMANCE**

BW	ADJ. WW	ADJ. YW
104 lbs	774 lbs	1289 lbs

**EPD's**

CE	BW	WW	YW	M	MCE	MWWT
5.8	4.7	90.1	133.5	25.6	5.2	70.7



**HOMO POLLED  
SIRE VERIFIED** (Pending)

- Another very good, red **Kamden** bull. He is deep bodied, smooth with a wide hip. We bought **Kamden** to add that performance growth and width to his progeny.
- Very good performance numbers. weaned at just under 800 lbs and had a yearling weight of just under 1300lbs.





**HOMO POLLED  
SIRE VERIFIED  
DILUTOR FREE**

- A big, long bodied, growthy black baldy bull.
- I have mentioned lots about his great mother in a number of our bulls in our offering. His great sire, **Spring Creek Redford** that has done so much in our herd is only half of the answer to his bulls full potential, you need a great dam. **7B** is an **Odin** daughter with great feet and udder structure with built in performance.
- This big boy weaned off his mother in mid-September at a whopping 974lbs, number # 1. Keep every daughter this bull sires because he ranks in the top 1% for maternal weaning weight in the Simmental breed.

**WILLOWDALE BLK REDFORD 10M**

BPG1478855 / DRJS 10M / January 20, 2024 / Black Polled Purebred



**SPRINGCREEK LADIES MAN 90E**  
**SPRINGCREEK REDFORD 55H**  
 IPU 308Z POCAHONTAS 25E  
  
**OLF ODIN U5**  
**WILLOWDALE PATT 7B**  
 WILLOWDALE PATT 62Z  
  
**SPRINGCREEK LINER 56U**  
**SPRINGCREEK BROOKE 68Z**  
**SPRINGCREEK SPARK PLUG**  
 IPU 105L POCAHONTAS 308Z  
  
**ELLINGSON LEGACY M229**  
**OLF LADY TRIATHLON S655**  
 IPU 52N ACCELERATOR 206U  
 KIMLAKE PATT 758T

**PERFORMANCE**

BW	ADJ. WW	ADJ. YW
100 lbs	856 lbs	1282 lbs

**EPD's**

CE	BW	WW	YW	M	MCE	MWWT
9.4	2.5	93.2	137.9	36.4	7.2	83.0

**WILLOWDALE EASTWOOD 7M**

BPG1483112 / WDDB 7M / January 30, 2024 / Black Polled Purebred



**SBSF EASTWOOD 22E**  
**SPRINGCREEK EASTWOOD 73G**  
 SPRINGCREEK LENA 112E  
  
**NCB COBRA 47Y**  
**WILLOWDALE BLACK SUMMER 1G**  
 WILLOWDALE BLACK SUMMER 2E  
  
**CMS SOCHI 307A**  
**SBSF SAHARA 7A**  
**SPRINGCREEK SPARK PLUG**  
 SPRINGCREEK LENA 7B  
  
**LFE VIPER 455U**  
**NCB MISS DREAM 22T**  
**WFL ABSOLUTE 51Y**  
 WILLOWDALE BLK SUMMER115C

**PERFORMANCE**

BW	ADJ. WW	ADJ. YW
91 lbs	727 lbs	1241 lbs

**EPD's**

CE	BW	WW	YW	M	MCE	MWWT
13.2	0.9	76.7	118.0	26.4	8.5	64.8



**HOMO POLLED  
SIRE VERIFIED  
HETERO BLACK**

- Here is 'Gentle Ben'. Every time I feed, there he is in the same spot, waiting for his ear scratch. Love this bull, and you will too
- Here is a bull you need to stand behind and admire his thickness over the top, extra width through his hips and depth of rear quarter muscle.
- Sired by **Spring Creek Eastwood 73G**, a calving ease bull, that when crossed on big power cows like **1G**, the results are first class. She has another ripper of a bull calf on the ground now.
- Very attractive calving ease and birth weight EPD's.
- A black bull that checks all the boxes. Mark him a keeper!



## WILLOWDALE BLK REDFORD 61M

BPG1483117 / DRJS 61M / February 4, 2024 / Black Polled Purebred

14

**SPRINGCREEK LADIES MAN 90E**    **SPRINGCREEK LINER 56U**  
**SPRINGCREEK REDFORD 55H**    **SPRINGCREEK BROOKE 68Z**  
**IPU 308Z POCAHONTAS 25E**    **SPRINGCREEK SPARK PLUG**  
    **IPU 105L POCAHONTAS 308Z**  
  
**OLF OTIS Y43**    **OLF ODIN U5**  
**WILLOWDALE SADIE 64C**    **OLF MISS GUNNER W8**  
**WILLOWDALE SADIE 29S**    **TNT DYNAMITE BLACK L137**  
    **WILLOWDALE MELODY 6M**

**PERFORMANCE**

BW	ADJ. WW	ADJ. YW
87 lbs	727 lbs	1181 lbs

**EPD's**

CE	BW	WW	YW	M	MCE	MWWT
14.0	0.3	73.7	106.4	34.5	10.5	71.4

**HOMO POLLED, SIRE VERIFIED, HETERO BLACK**

- A soggy, solid black, loose hided bull with lots of hair.
- Only 87lbs at birth, from an older cow. Lots of calving ease and birth weight EPD's in the top 10% for CE & BW. Suitable for larger heifers or second calving cows.
- This cow family goes back to one of the first purebred cows we owned, born in 1992. Lots of good maternal strength here. I think this is achievement in any cow herd.



14

## WILLOWDALE WALK THIS WAY 1M

BPG1482372 / WDBS 1M / January 23, 2024 / Black Polled Purebred

15

**NCB COBRA 47Y**    **LFE VIPER 455U**  
**MADER WALK THIS WAY 224B**    **NCB MISS DREAM 22T**  
**MADER P IRON SUGAR 7X**    **MADER P BLACK IRONMAN 22U**  
    **LFE FAMOUS 632T**  
  
**MADER THE NATIONAL 43E**    **LFE THE RIDDLER 323B**  
**WILLOWDALE BLK SUMMER 4K**    **LFE BS VIOLET 641A**  
**WILLOWDALE BLACK SUMMER 2E**    **WFL ABSOLUTE 51Y**  
    **WILLOWDALE BLK SUMMER115C**

**PERFORMANCE**

BW	ADJ. WW	ADJ. YW
82 lbs	746 lbs	1176 lbs

**EPD's**

CE	BW	WW	YW	M	MCE	MWWT
11.0	0.2	84.3	128.4	23.1	7.5	65.3

**HOMO POLLED, SIRE VERIFIED, HETERO BLACK**

- A **Mader Walk this Way** son. A herd bull that is a stand out in the Simmental Breed for his calving ease and explosive performance.
- **1M** is an average frame, smooth profiled bull with light bone structure. With his 82lb birth weight he will make an ideal heifer bull. His EPD's ranks in the top 10 % for breed birth weight.
- Goes back to the amazing 2E cow, which is also the 7M bull's grandmother too. Lots of desirable performance stacked in this bull's pedigree.
- Don't miss out on this bull's quality.



15

## WILLOWDALE SLIDER 95M

PG1483129 / DRJS 95M / January 18, 2024 / Red Polled Purebred

16

**CDI VEGAS 26X**    **HSF HIGH ROLLER 12T**  
**KWA SLIDER 196H**    **CDI MS CROCKET 110U**  
**CROWE GOLDIE 3F**    **HART STATE OF WAR 056C**  
    **CROWE GOLDIE 3C**  
  
**DOUBLE BAR D LIBERATOR 412E**    **KWA LAW MAKER 59C**  
**ERIXON ESSENCE 95K**    **DOUBLE BAR D GALAXY 101X**  
**ERIXON LADY 1315D**    **ERIXON HIGH ROLLER 143B**  
    **ERIXON LADY 77Z**

**PERFORMANCE**

BW	ADJ. WW	ADJ. YW
84 lbs	691 lbs	1118 lbs

**EPD's**

CE	BW	WW	YW	M	MCE	MWWT
14.3	0.1	77.5	115.4	23.9	7.9	62.7

**POLLED**

- 95M is from the calving ease specialist bull **KWA Slider 196H**.
- Kent bought this guy's mom from **Erixon Simmentals**, at the Border City Sale. She is a smaller framed broody cow with a tidy udder.
- **95M** is moderate framed, light boned and smooth shouldered. He ranks in the top 10% for birth weight EPD's.
- Gestation length 277 days. Can be used on heifers.



16



### WILLOWDALE ASHWORTH 73M

PG1483120 / DRJS 73M / February 6, 2024 / Red Polled Purebred

17

MRL STATEMENT 3F  
KWA STATEMENT 31J  
WS MOTHER LODE W21

R PLUS VENOM 4006B  
MRL MISS 6600D  
HSF HIGH ROLLER 12T  
WS MISS BEEFWAY T7

SPRINGCREEK REDFORD 55H  
WILLOWDALE SNAZZY 34K  
WILLOWDALE SNAZZY 110B

SPRINGCREEK LADIES MAN 90E  
IPU 308Z POCAHONTAS 25E  
IPU 52N ACCELERATOR 206U  
WILLOWDALE SNAZZY 66S

PERFORMANCE

BW	ADJ. WW	ADJ. YW
93 lbs	805 lbs	1315 lbs

EPD's

CE	BW	WW	YW	M	MCE	MWWT
13.9	2.0	86.0	131.5	26.7	7.3	69.7

POLLED

- Multi generation polled, dark red, long body, lots of hair and very smooth.
- Excellent hoof structure.
- These 31J sons from first calf heifer have preformed amazing. A little bigger birth weight here and his mother calved unassisted.
- This bull is a product of many years of breeding at Willowdale to create a herd that will calve easy and then have above average performance.
- He was our #4 bull for weaning weight and #4 bull for yearling weight.
- Can be used on larger heifers.



### WILLOWDALE ASHWORTH 28M

PG1482658 / DRJS 28M / January 23, 2024 / Red Polled Purebred

18

MRL STATEMENT 3F  
KWA STATEMENT 31J  
WS MOTHER LODE W21

R PLUS VENOM 4006B  
MRL MISS 6600D  
HSF HIGH ROLLER 12T  
WS MISS BEEFWAY T7

WHEATLAND AFFINITY 8196F  
WILLOWDALE BLK PATT 6K  
WILLOWDALE PATT 7B

CCLT ALLIANCE 91C  
WHEATLAND LADY 913W  
OLF ODIN U5  
WILLOWDALE PATT 62Z

PERFORMANCE

BW	ADJ. WW	ADJ. YW
72 lbs	753 lbs	1220 lbs

EPD's

CE	BW	WW	YW	M	MCE	MWWT
19.4	-2.1	66.5	93.6	24.8	9.5	58.1

HOMO POLLED, SIRE VERIFIED, DILUTOR FREE

- A stand up 31J son. A pen favourite with visitors.
- For a bull that started at 72lbs, he has done all you can ask for. He has matured into a herd bull with calving ease to burn.
- Recommended for heifers. Ranks in the top 1% for calving ease and birth weight EPD's.
- Look who his grandmother is, our great matron female, 7B. Add that consistency and longevity to your program!



### WILLOWDALE ASHWORTH 24M

PG1482370 / DRJS 24M / January 23, 2024 / Red Polled Purebred

19

MRL STATEMENT 3F  
KWA STATEMENT 31J  
WS MOTHER LODE W21

R PLUS VENOM 4006B  
MRL MISS 6600D  
HSF HIGH ROLLER 12T  
WS MISS BEEFWAY T7

SPRINGCREEK REDFORD 55H  
WILLOWDALE PERSIA 9K  
WILLOWDALE PERSIA 23D

SPRINGCREEK LADIES MAN 90E  
IPU 308Z POCAHONTAS 25E  
KUNTZ SHERIFF 8A  
WILLOWDALE PERSIA 42B

PERFORMANCE

BW	ADJ. WW	ADJ. YW
92 lbs	800 lbs	1294 lbs

EPD's

CE	BW	WW	YW	M	MCE	MWWT
13.4	-1.3	76.5	116.0	29.4	7.3	67.7

HOMO POLLED, SIRE VERIFIED, DILUTOR FREE

- Another dark red, long bodied bull with an ideal hair coat , a KWA Statement31J son
- These 31J sired bulls have their sire's nice big foot and calving ease.
- A calving ease bull with a little bigger birth weight, he can be used on larger heifers. His birth weight EPD's rank him in the top 2% for the breed.





## WILLOWDALE ASHWORTH 13M

PG1483122 / WDBS 13M / February 8, 2024 / Red Polled Purebred

20

MRL STATEMENT 3F  
KWA STATEMENT 31J  
WS MOTHER LODI W21

R PLUS VENOM 4006B  
MRL MISS 6600D  
HSF HIGH ROLLER 12T  
WS MISS BEEFWAY T7

SPRINGCREEK REDFORD 55H  
WILLOWDALE BLK SUMMER 9K  
WILLOWDALE BLK SUMMER 7F

SPRINGCREEK LADIES MAN 90E  
IPU 308Z POCAHONTAS 25E  
RF CAPTAIN BLACK 430B  
WILLOWDALE BLK SUMMER

### PERFORMANCE

BW	ADJ. WW	ADJ. YW
90 lbs	777 lbs	1319 lbs

### EPD's

CE	BW	WW	YW	M	MCE	MWWT
13.8	1.9	86.1	134.7	24.3	7.5	67.4

### POLLED

- Multi generation polled.
- 13M is a very stout, thick, light red beef bull.
- Another 31J son with calving ease, but has a lot of power on his maternal side. A great bull for second calving cows.
- His dam is a big hetero black cow with lots of volume, just like her mother and grandmother



## DRJS 19M

Pending / DRJS 19M / January 22, 2024 / Red Polled Purebred

21

MRL STATEMENT 3F  
KWA STATEMENT 31J  
WS MOTHER LODI W21

R PLUS VENOM 4006B  
MRL MISS 6600D  
HSF HIGH ROLLER 12T  
WS MISS BEEFWAY T7

SPRINGCREEK EASTWOOD 73G  
WILLOWDALE RED SAGE 19K  
WILLOWDALE RED SAGE 60H

SBSF EASTWOOD 22E  
SPRINGCREEK LENA 112E  
MADER THE NATIONAL 43E  
WILLOWDALE RED SAGE 95C

### PERFORMANCE

BW	ADJ. WW	ADJ. YW
84 lbs	751 lbs	1285 lbs

### EPD's

CE	BW	WW	YW	M	MCE	MWWT
16.0	0.1	79.7	128.2	23.9	8.3	63.8

### HETERO POLLED, SIRE VERIFIED (Pending), DILUTOR FREE

- A very smooth, long spined bull with lots of rib.
- His sire has been our 'go to' calving ease bull to use on heifers.
- With an 84lb birth weight, 19M is a double bred calving ease bull, with **Spring Creek Eastwood 73G** on this dam.
- Recommended for use on heifers, he is in the top 2 % for calving ease and top 10% for birth weight.



## WILLOWDALE REDFORD 2L

PG1441594 / DRJS 2L / January 13, 2023 / Red Polled Purebred

22

SPRINGCREEK LADIES MAN 90E  
SPRINGCREEK REDFORD 55H  
IPU 308Z POCAHONTAS 25E

SPRINGCREEK LINER 56U  
SPRINGCREEK BROOKE 68Z  
SPRINGCREEK SPARK PLUG  
IPU 105L POCAHONTAS 308Z

R PLUS RELOAD 2006Z  
WILLOWDALE RELOAD 48F  
RAINALTA TRACTION 140C

R PLUS HARD ROCK 145X  
IPU RED BARONESS 1T  
KWA ROCK 78Z  
RAINALTA TRACTION 44T

### PERFORMANCE

BW	ADJ. WW	ADJ. YW
85 lbs	739 lbs	1195 lbs

### EPD's

CE	BW	WW	YW	M	MCE	MWWT
9.5	2.0	80.3	114.2	31.8	8.0	72.0

### POLLED

- Multi generational polled
- An attractive structured, solid red bull that is halter broke
- He displays exceptional length of body and is very smooth through his frontend
- A bull we kept over the summer to grow him out due to his genetic potential.
- Last winter he got sick, which put him behind his mates. He fully recovered and we used him as a cleanup bull at the end of the breeding season. We wanted to know that he was in shape to breed cows; which he succeeded in proving.
- He is above average for calving ease and birth weight.
- Put him with cows to breed and get that extra coverage from a 2 yr old.







**SPRING CREEK EASTWOOD 73G**

PG1267035 / MBJ 73G / January 23, 2019 / Red Polled Purebred

PERFORMANCE			EPD's						
BW	ADJ. WW	ADJ. YW	CE	BW	WW	YW	M	MCE	MWWT
88 lbs	760 lbs	1358 lbs	14.0	-1.0	58.8	95.0	30.5	8.8	59.9

Sire of Lot 13

Reference Sires



**SPRINGCREEK REDFORD 55H**

PG1302169 / MBJ 55H / January 14, 2020 / Red Polled Purebred

PERFORMANCE			EPD's						
BW	ADJ. WW	ADJ. YW	CE	BW	WW	YW	M	MCE	MWWT
88 lbs	837 lbs	1432 lbs	9.0	2.4	78.9	113.6	40.6	8.3	80.1

Sire of Lots 2, 3, 4, 5, 6, 7, 8, 9, 12, 14 and 22



**KWA STATEMENT 31J**

PTG1374079 / KWA 31J / January 12, 2021 / Red Polled Purebred

PERFORMANCE			EPD's						
BW	ADJ. WW	ADJ. YW	CE	BW	WW	YW	M	MCE	MWWT
88 lbs	727 lbs	1361 lbs	19.1	-1.4	76.1	120.2	22.2	7.5	60.3

Sire of Lots 17, 18, 19, 20 and 21

Thank You!!

**Willowdale Buyers 2024**

- Greg Reinitz\*
- Austin Hartman
- Cauby Smith
- Peter Doerksen
- Neil & Wilma Wheeler\*
- Chris Cameron
- Raymond Watmough
- Hodges Simmental Farm – Roy Hodges
- Kody Moodie
- J. L. Livestock Ranch
- Earl Allen
- Dead Horse Creek Cattle Company\*
- Reid Toews
- Eldred Ratzlaff
- Emily Jassman
- KMR Simmentals\*
- Riley Jassman
- Moovers Inc.
- Montgomery Farms
- Riley & Lisa Strid
- Cowell Family Farm
- Blackhurst Ranch\*
- Sunny Valley Simmentals
- KSL Simmentals
- Lewis Farms

\*multiple purchases



# WELCOME

from *KMR Simmentals*

KMR Simmental's is a family operated purebred cow calf operation based out of Grovedale Alberta. Our goal is to provide the type of cattle the commercial cattleman desires. Udders and feet have been the focus of our cow herd from the start. We have always selected bulls with a very maternal pedigree to ensure these traits continue to be passed on. KMR cows winter on a very similar ration to most ranchers in the area, hay based diet with some straw and grain. We feel our cows must make it in the real world to prove they deserve to pass on their genetics. We have brought these bulls along slow and steady to promote longevity. Our bulls were weaned in the middle of September and went on whole oats from weaning to the start of December when they were switched to a Bullseye and cereal based ration. We have a good number of heifer bulls available this year in both colors as well as some cow bulls.

Looking forward to seeing you on sale day.

Kent and Robin Malcomson & Family  
 Tel: 587-298-5404  
 Email: kent@evolveenergy.com



A calf we cant say enough about, structuraly correct, wide topped, soft made with huge hip. 1M is the natural calf out of our Linette donor so loads of cow power backing this guy.

## KMR MAVERICK 1M

BPG1503171 / KMR 1M / January 4, 2024 / Black Polled Purebred

**SUNNY VALLEY FREEDOM 22F**    **STARWEST POL BLUEPRINT**  
**ULTRA MAVERICK 96K**        **SUNNY VALLEY TRINITY 53Z**  
**HVAL MISS WANDA 771E**      **HARVIE RED SUMMIT 54B**  
    **HARVIE MS WANDA 178C**

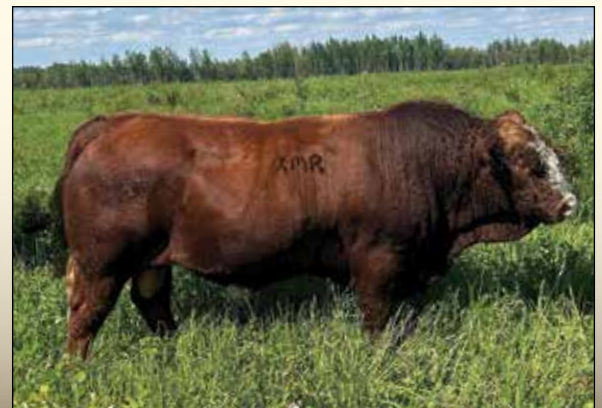
**BGS/BM CAPTAIN SCREAM 63D**    **SVS CAPTAIN MORGAN 11Z**  
**KMR LINETTE BBJ 2J**                **RF SCREAM 215Z**  
**BLACKSAND LINETTE 823U**        **SPRINGCREEK LINER 104S**  
    **SPRINGCREEK DAWN 131P**

### PERFORMANCE

BW	OCT 1 WW	FEB 7 YW
94 lbs	920 lbs	1324 lbs

### EPD's

CE	BW	WW	YW	M	MCE	MWWT
6.5	4.8	95.5	138.9	29.2	3.9	76.9



ULTRA MAVERICK 96K  
 SIRE OF LOTS 23, 26, 27, 29 and 31





A calving ease option off one of our foundation cows who has a perfect udder and feet. 10M was the Codys pick when he toured the bulls. He admired his square hip and wide top that transitions into a nice smooth front third. Look for this bull to make great females as his pedigree is stacked with maternal greatness. RST 21E has put many bulls through the sale ring over the years.



BOSS LAKE WALLBANGER 714E  
SIRE OF LOTS 24, 28 and 30

### KMR WALLBANGER 10M

BPG1502915 / KMR 10M / February 1, 2024 / Black Polled Purebred

24

- HARVIE JDF WALLBANGER111X
- BOSS LAKE WALLBANGER 714E
- CAJS ELEGANT FORCE W24
- WFL MR WESTWAY 46A
- RST CHERRY 21E
- RST CHERRY 21C
- SHS ENTICER P1B
- JDF PEPSI 61U
- SVF STEEL FORCE S701
- JM DICE-H25-L24
- R PLUS BLACKEDGE
- WFL MS HINSDALE 9012W
- IPU CROSBY 34Y
- WILLOWDALE WINNIE 45W

#### PERFORMANCE

BW	ADJ. WW	ADJ. YW
86 lbs	765 lbs	1224 lbs

#### EPD's

CE	BW	WW	YW	M	MCE	MWWT
10.2	3.8	79.7	118.2	19.3	5.8	59.2

### KMR STATEMENT 14M

PG1502917 / KMR 14M / February 10, 2024 / Red Polled Purebred

25

- MRL STATEMENT 3F
- KWA STATEMENT 31J
- WS MOTHER LODE W21
- WS EPIC E152
- WILLOWDALE RED ANGEL 43K
- WILLOWDALE RED ANGEL 35D
- R PLUS VENOM 4006B
- MRL MISS 6600D
- HSF HIGH ROLLER 12T
- WS MISS BEEFWAY T7
- WS ALL ABOARD B80
- WS MAJESTIC Z133
- PRL BEAMER 14 73B
- WILLOWDALE RED ANGEL 92B

#### PERFORMANCE

BW	ADJ. WW	ADJ. YW
76 lbs	699 lbs	1158 lbs

#### EPD's

CE	BW	WW	YW	M	MCE	MWWT
15.3	0.3	86.4	131.5	21.6	7.3	64.7



A sleep easy calving ease bull with style to spare. This calf comes off a first calf Epic daughter who has hit it out of the park on her first try. 14M has been a favorite since birth, he has always had that cocky look, extremely smooth made and soggy. Statement x Epic these calves will come easy!





### KMR MAVERICK 5M

PG1502921 / KMR 5M / January 25, 2024 / Red Polled Purebred

26

SUNNY VALLEY FREEDOM 22F  
**ULTRA MAVERICK 96K**  
 HVAL MISS WANDA 771E  
 TNT ACCELERATOR S226  
**TYMARC QUINCY 518C**  
 CMS ROXY 49R

STARWEST POL BLUEPRINT  
 SUNNY VALLEY TRINITY 53Z  
 HARVIE RED SUMMIT 54B  
 HARVIE MS WANDA 178C  
 TNT GUNNER N208  
 TNT MISS ALMA J83  
 STF STARQUEST N114  
 WSR JETTA 63J

**PERFORMANCE**

BW	ADJ. WW	ADJ. YW
82 lbs	730 lbs	1084 lbs

**EPD's**

CE	BW	WW	YW	M	MCE	MWWT
5.2	4.8	81.2	118.4	29.7	1.6	70.2

Cherry red with a splash of chrome, this bull is heavily muscled and structurally correct with tonnes of hair. A early maturing bull who we admired on summer pasture. 518C is a solid cow that came to us when we purchased Bob Andersons remaining herd. She is a dark red cow with a great udder even at her age.

### KMR MAVERICK 24M

BPG1502920 / KMR 24M / March 7, 2024 / Black Polled Purebred

27

SUNNY VALLEY FREEDOM 22F  
**ULTRA MAVERICK 96K**  
 HVAL MISS WANDA 771E  
 WS STEPPING STONE B44  
**DEEG DKD MS ZEOLA 21F**  
 DEEG DKD MS ZEOLA 16D

STARWEST POL BLUEPRINT  
 SUNNY VALLEY TRINITY 53Z  
 HARVIE RED SUMMIT 54B  
 HARVIE MS WANDA 178C  
 W/C LOCK DOWN 206Z  
 WS MS UPGRADE Z15  
 RF CAPTAIN BLACK 430B  
 MUIRHEADS ZEOLA 45Z

**PERFORMANCE**

BW	ADJ. WW	ADJ. YW
95 lbs	702 lbs	1148 lbs

**EPD's**

CE	BW	WW	YW	M	MCE	MWWT
9.5	2.0	82.0	125.7	29.0	4.6	69.9

Soggy and hairy with tonnes of middle. 24M comes from one of our top black cows who was a past high seller out of the Deegs program. 21F is a female that is picked by anyone that tours our cows. This moderate tanky female is set to enter our donor program. Look for this bull to add maternal power to your next calf crop.







28

**KMR WALLBANGER 47L**

BPG1463352 / KMR 47L / August 22, 2023 / Black Polled Purebred

28

- HARVIE JDF WALLBANGER111X
- BOSS LAKE WALLBANGER 714E
- CAJS ELEGANT FORCE W24
- WHEATLAND RED TEDDY 457P
- RST CLASSY 6E
- RST CLASSY 7C
- SHS ENTICER P1B
- JDF PEPSI 61U
- SVF STEEL FORCE S701
- JM DICE-H25-L24
- WHEATLAND BULL 131L
- WHEATLAND LADY 902J
- WFL MR WESTWAY 46A
- MOES DIVINE FIRE 591U

**PERFORMANCE**

BW	OCT 1 WT	FEB 1 WT
82 lbs	1110 lbs	1510 lbs

**EPD's**

CE	BW	WW	YW	M	MCE	MWWT
11.2	2.2	73.3	106.2	19.9	6.1	56.6

Heifer Bull. This super smooth made black blaze faced bull is a product of our short lived long yearling program which resulted in this calf and few females in the replacement pen. Moderate bw with lots of ce in his pedigree this extra age bull will cover some extra cows, moderate bw and add some chrome!



29

**KMR MAVERICK 9M**

PG1502919 / KMR 9M / February 1, 2024 / Red Polled Purebred

29

- SUNNY VALLEY FREEDOM 22F
- ULTRA MAVERICK 96K
- HVAL MISS WANDA 771E
- PWK BADGER 2B
- TYMARC ECHO 815F
- TYS ECHO 313A
- STARWEST POL BLUEPRINT
- SUNNY VALLEY TRINITY 53Z
- HARVIE RED SUMMIT 54B
- HARVIE MS WANDA 178C
- KWA FLYF RED MOUNTAIN 16Z
- PWK MS WISE GUY 318W 61Z
- TNT ACCELERATOR S226
- TYMARC ECHO 77T

**PERFORMANCE**

BW	ADJ. WW	ADJ. YW
84 lbs	646 lbs	1056 lbs

**EPD's**

CE	BW	WW	YW	M	MCE	MWWT
7.3	4.6	86.6	127.8	31.9	4.0	75.2

Heavily muscled and structurally correct. This calf has a bit more frame while still remaining soft in his type. A moderate bw and smooth shoulders should make calving a breeze. Some neat old school genetics on the cow side going back to the great Tymarc program.



30

**KMR WALLBANGER 19M**

BPG1502916 / KMR 19M / February 26, 2024 / Black Polled Purebred

30

- HARVIE JDF WALLBANGER111X
- BOSS LAKE WALLBANGER 714E
- CAJS ELEGANT FORCE W24
- OH KAY CROSSFIRE 76Y
- TYMARC ROCKETTE 613D
- TYMARC 68S ROCKETTE 222Z
- SHS ENTICER P1B
- JDF PEPSI 61U
- SVF STEEL FORCE S701
- JM DICE-H25-L24
- KOP CROSBY 137W
- OH KAY SAPPHIRE 7S
- LBR CROCKET R81
- IPU MS RED TEDDY 68S

**PERFORMANCE**

BW	ADJ. WW	ADJ. YW
89 lbs	649 lbs	1115 lbs

**EPD's**

CE	BW	WW	YW	M	MCE	MWWT
6.4	4.6	79.7	122.3	23.0	3.0	62.8

Stylish and refined. 19M is an honest bull with a moderate bw, hairy and wide topped. Coming out of a good Tymarc cow who sold a bull through the ring last year.



31

**KMR MAVERICK 7M**

PG1463343 / KMR 7M / January 27, 2024 / Red Polled Purebred

31

- SUNNY VALLEY FREEDOM 22F
- ULTRA MAVERICK 96K
- HVAL MISS WANDA 771E
- OH KAY CROSSFIRE 76Y
- TYMARC CANDACE 40B
- TYMARC 68S ROCKETTE 222Z
- STARWEST POL BLUEPRINT
- SUNNY VALLEY TRINITY 53Z
- HARVIE RED SUMMIT 54B
- HARVIE MS WANDA 178C
- KOP CROSBY 137W
- OH KAY SAPPHIRE 7S
- ANKONIAN RED CAESAR
- ERIXON LADY 209R

**PERFORMANCE**

BW	ADJ. WW	ADJ. YW
86 lbs	592 lbs	1014 lbs

**EPD's**

CE	BW	WW	YW	M	MCE	MWWT
3.0	5.5	74.2	103.2	20.4	1.4	57.5

As dark red as you can make them! 7M is the smoothest shoulder bull in our offering with hair to spare. A moderate bw paired with a calving ease phenotype we feel this guy will calve very easy.



# WELCOME

from Short Grass Farms

We are once again extremely grateful and excited to be bringing 8 of our best to town for the Peace Country Bull Sale. Thank you to our Past and Future Buyers, without you, we wouldn't be living the dream.

These coming 2 year olds will surely be a huge asset to any cattle operation, you can buy with confidence that these boys are going to go out and cover the ground and your cows. We feed a high forage diet, allowing these boys to go work hard in your herd for a long time. Hand fed 15 lbs of CJ bull ration/Oat mix a day, the growth is all in the genetics. Disposition is one of top priority when selecting bulls, and you won't find a quieter pen of 2 year old bulls, I guarantee. We take great pride in the quietness of our herd, and any bull or heifer born on the farm is halter broke. Now don't get me wrong, these 2000 lb bulls are just tie broke now, I'm sure you could lead them as long they say so. We have been carefully selecting proven genetics from some of the best in the business, and our herd is showing our proficiency and dedication to feet, udders and disposition, come look for yourselves.



You will see the Short Grass crew gracing every Cattle Show in the peace showcasing our proven genetics. Even took a string to Farm Fair International in 2024, and had a lot of interest in our program. We are very proud of the showman the girls are proving to be, becoming great assets to the program at picturing and videoing time. We are heavily involved in 4H, going on 7 years, and Chelsie the Leader for 5. We all love everything that 4H brings to the members and community.

We trust that any one of these bulls will go out and work in your herd. Bulls can viewed prior to sale day on the farm North of Debolt, we would love to show you around. Coffee is always on.

We look forward to meeting you!  
Kurtis, Chelsie, Mickenzie, Tessa, Raigan

Kurtis Dillabough: 780-831-4957  
Chelsie Dillabough 780-402-9578  
chelsie@iwantwireless.ca



SKYWEST JANIQUA - DAM OF LOT 32



SHORTGRASS LUCKY STRIKE 120L

## SHORTGRASS LUCKY STRIKE 120L

1468330 / SGF 120L / April 26, 2023 / Fullblood

FGAF RADIOACTIVE 030E  
ANCHOR D CRUZ 167J  
ANCHOR D GALILEA 167G

VIRGINIA SPARTAN 530E  
SKYWEST JANIQUA  
SKYWEST FIONA

FGAF GUERRERO 810Y  
STARWEST ANGEL  
STARWEST POL BLUEPRINT  
ANCHOR D ELEANOR 495E

APLX SANTANA 11Y  
VIRGINIA CASSANDRA 530C  
STARWEST CANADIAN LEGEND  
SKYWEST DARLA

### PERFORMANCE

BW	WW	YW	CE	BW	WW	YW	M	MCE	MWWT
102 lbs	810 lbs	1360 lbs	12.4	1.5	68.0	96.2	37.5	5.1	71.5

### EPD's

This is a big time herd sire right here. He's stylish and chromed right up with a deep red we all know and love. He's thick from the front to the back, all around impressive. If you had the pleasure of viewing him at the Peace Country Beef Congress, you know he packs a punch. He's backed by some of the greats - FGAF Radioactive & Virginia Spartan. He was crowned Reserve Champion Cow/Calf pair at the District 4H show. His dam has an absolute perfect udder and feet to match. His quiet disposition matched with eye appeal gets him noticed in the pen every time.







33

**SHORTGRASS LAW MAKER 228L**

1468333 / SGF 228L / April 30, 2023 / Fullblood

FGAF RADIOACTIVE 030E  
ANCHOR D CRUZ 167J  
ANCHOR D GALILEA 167G

KUNTZ DURAMAX 12D  
SKYWEST HONEY 228H  
SKYWEST ELINOR

FGAF GUERRERO 810Y  
STARWEST ANGEL  
STARWEST POL BLUEPRINT  
ANCHOR D ELEANOR 495E

SOUTHSEVEN MR ADONIS 96Z  
KUNTZ MISS MOSES 03X  
STARWEST CANADIAN LEGEND  
SKYWEST CUTIE PIE

**PERFORMANCE**

BW	WW	YW
98 lbs	800 lbs	1240 lbs

**EPD's**

CE	BW	WW	YW	M	MCE	MWWT
12.4	1.5	67.5	96.3	35.5	3.3	69.3



ANCHOR D CRUZ 167J  
SIRE OF LOTS 32 - 34

**SHORTGRASS LAW BREAKER 113L**

1468332 / SGF 113L / April 28, 2023 / Fullblood

FGAF RADIOACTIVE 030E  
ANCHOR D CRUZ 167J  
ANCHOR D GALILEA 167G

VIRGINIA SPARTAN 530E  
SKYWEST JANET  
SILVER LAKE RUBEE 157F

FGAF GUERRERO 810Y  
STARWEST ANGEL  
STARWEST POL BLUEPRINT  
ANCHOR D ELEANOR 495E

APLX SANTANA 11Y  
VIRGINIA CASSANDRA 530C  
BEE VAULT 167C  
SILVER LAKE RUBEE 71A

**PERFORMANCE**

BW	WW	YW
84 lbs	710 lbs	1160 lbs

**EPD's**

CE	BW	WW	YW	M	MCE	MWWT
13.6	-0.1	59.5	82.8	37.8	7.2	67.6



34

Calving Ease Specialist right here – he comes from a long line of calving ease on both sides. He is as long as they come and smooth made. Skywest Janet & Law Breaker were awarded Grand Champion Cow/Calf at the District 4H show. Another Spartan / Radioactive grandson with proven genetics. Our Anchor D Cruz bull is a staple around here, he's perfect in the heifer pen, year after year, our heifers are on "Cruz Control" at calving. This guy is ready to go and work!



SKYWEST JANET - DAM OF LOT 34





35

This guy is the real deal. Total Package. Show Stopper. He turns heads in the bull pen every single time. He is your next big herd sire. Length, Muscle, Hair, Dark Red, I could go on and on. He's Quiet and will require scratches, just don't let his size scare you, he's a puppy dog. He made his show debut last season at the Peace Country Beef Congress where he made the final drive at only 10 months old. Short Grass Gold Digger, delivers year after year, and Virginia Vachon, just put icing on the cake with this one! His full sister is on the farm and she is just as impressive. He is ready to go out and cover ground and your cows. He is made to add those \$\$ in the fall with stout, fleshy calves. Don't miss out on this guy.



SHORTGRASS LOCOMOTIVE 253L

**SHORTGRASS LOCOMOTIVE 253L**

G1468308 / SGF 253L / April 15, 2023 / Red Horned Purebred

35

- SOUTHSEVEN MR ADONIS 96Z
- VIRGINIA VACHON 41H
- VIRGINIA'S MS WEST PATTY
- DOUBLE BAR D KITIMAT 237B
- SHORTGRASS GOLD DIGGER 253G
- WOLFE ENVERA 253E
- BLCC MR ADONIS 30X
- SOUTH SEVEN MISS 70S
- WESTDRUMS ANDREW
- ANCHOR "T" BARBI 46K
- WLSF KAIMAT 930X
- DOUBLE BAR D LOLITA 188Z
- DOUBLE BAR D AERO 298B
- WOLFE YAMKA 719Y

**PERFORMANCE**

BW	WW	YW
104 lbs	935 lbs	1370 lbs

**EPD's**

CE	BW	WW	YW	M	MCE	MWWT
8.6	4.0	51.2	67.3	33.7	2.6	59.3

**SHORTGRASS LENNOX LEWIS 118L**

G1467084 / SGF 118L / April 8, 2023 / Red Horned Purebred

36

- SOUTHSEVEN MR ADONIS 96Z
- VIRGINIA VACHON 41H
- VIRGINIA'S MS WEST PATTY
- BRINK GERONIMO A310
- WOLFE FELICIA 118F
- WOLFE ARIEL 824A
- BLCC MR ADONIS 30X
- SOUTH SEVEN MISS 70S
- WESTDRUMS ANDREW
- ANCHOR "T" BARBI 46K
- BRINK LEVI X011
- BRINK ANITA Y140
- BEECH BROS X MAN 918X
- WOLFE YAKSHA 692Y

**PERFORMANCE**

BW	WW	YW
115 lbs	1020 lbs	1455 lbs

**EPD's**

CE	BW	WW	YW	M	MCE	MWWT
3.9	6.6	71.0	92.6	34.2	1.6	69.7



36

Lean, Mean, Muscle Machine. Here is big time pound maker. He's as long as a freight train. With a wean weight over 1000 lbs, has us excited for his future. He comes from a large framed powerful cow, that passes on tremendous size and body depth each year. He is continually at the top at every weigh in. He is smooth made and docile as a kitten. He too made the final drive last year at the Peace Country Beef Congress at merely 10 months old. I know you're not supposed to pick favorites - but this guy just has my heart. You will see his maternal sister hit the show ring circuit this spring, and you'll know why this cow family is a favorite around here.



VIRGINIA VACHON 41H  
SIRE OF LOTS 35 - 39





If you're looking for your next Ranch bull, look no further. This guy has such a cowboy presence to him. He is THICK. Great muscling, thick hair coat, amazing feet and dam that you can write home about. Wolfe Hershey is backed by Brink Custer and is easily the deepest female on the farm, she is a powerhouse dam and bred to Virginia Vachon a "stuey" son, I know this 107 bull is going to go out and do great things in your herd. Talk about herd growing ability with this guy, you will want to retain every one of his daughters! You won't see a Virginia Vachon daughter leave this farm, so buy with confidence you'll be calving some herd building females, and extra pounds at weaning.



SHORTGRASS LOCK N LOAD 107L

**SHORTGRASS LOCK N LOAD 107L**

G1468331 / SGF 107L / April 28, 2023 / Red Horned Purebred

37

- SOUTHSEVEN MR ADONIS 96Z
- VIRGINIA VACHON 41H
- VIRGINIA'S MS WEST PATTY
- BRINK CUSTER E773
- WOLFE HERSHEY 107H
- WOLFE DAKOTA 976D
- BLCC MR ADONIS 30X
- SOUTH SEVEN MISS 70S
- WESTDRUMS ANDREW
- ANCHOR "T" BARBI 46K
- BRINK FLEX C516
- BRINK CAROL C510
- BRINK GERONIMO A310
- WOLFE MISS 541T

**PERFORMANCE**

BW	WW	YW
100 lbs	830 lbs	1295 lbs

**EPD's**

CE	BW	WW	YW	M	MCE	MWWT
3.6	6.6	73.6	95.3	36.8	2.5	73.6

**SHORTGRASS LIEUTENANT 248L**

G1468326 / SGF 248L / April 22, 2023 / Red Horned Purebred

38

- SOUTHSEVEN MR ADONIS 96Z
- VIRGINIA VACHON 41H
- VIRGINIA'S MS WEST PATTY
- VIRGINIA BARCELONA 46X
- WOLFE EMIRA 248E
- WOLFE CINDI 918C
- BLCC MR ADONIS 30X
- SOUTH SEVEN MISS 70S
- WESTDRUMS ANDREW
- ANCHOR "T" BARBI 46K
- CHAMPS ROMANO
- ANCHOR "T" BARBI 46K
- SKORS CROCKET 32Y
- WOLFE YOVELA 728Y

**PERFORMANCE**

BW	WW	YW
99 lbs	785 lbs	1260 lbs

**EPD's**

CE	BW	WW	YW	M	MCE	MWWT
6.5	4.8	60.9	80.7	33.3	2.4	63.8



He's as honest as the day is long, hard to fault this guy. Muscle, Style, and a top line we are all looking for. He's ready to work. Another Vachon son, that is just put together, Moderate framed with a strong solid build. His dam is pushing 8 years old and just knocks them out of the park each year, she will have 3 progeny calving here this spring. Her first bull sold 7 years ago and still out working.







FULL SIBLING TO LOT 39

## SHORTGRASS LEGACY 119L

G1468314 / SGF 119L / April 16, 2023 / Red Horned Purebred

39

- SOUTHSEVEN MR ADONIS 96Z
- VIRGINIA VACHON 41H
- VIRGINIA'S MS WEST PATTY
- DOUBLE BAR D AERO 298B
- WOLFE HANSE 118H
- WOLFE OLGA 218E
- BLCC MR ADONIS 30X
- SOUTH SEVEN MISS 70S
- WESTDRUMS ANDREW
- ANCHOR "T" BARBI 46K
- WLSF ABESLY
- PROSTOCK GRETCHEN 257Y
- ANCHOR D STING 184W
- WOLFE ZILLY 755Z

I cannot say enough about Vachon, he was pivotal part of our program, sadly this is the last offering from him. Take a look at this guy, if you like big butts. He is a total package, destined to put that money strip on his offspring. Great top line and muscle structure just like his sire. The Dam goes back to the great Anchor D Sting 184W bull, and proving her way on the farm with offspring just like this guy. With Sting and Stuey gracing his pedigree you'll want to keep them all, adding longevity and pounds to your herd.

### PERFORMANCE

BW	WW	YW
95 lbs	835 lbs	1225 lbs

### EPD's

CE	BW	WW	YW	M	MCE	MWWT
4.4	5.7	62.4	81.8	31.9	0.7	63.1

# Internet Bidding Available

# DLMS

[www.dlms.ca](http://www.dlms.ca)

Direct Livestock Marketing Systems

For more information call:

Mark Shologan 780-699-5082 or Purebred Team 780-991-3025



**TERMS** - The terms of the sale are cash, cheque, e-transfer, or wire and are due at the time of sale, unless other arrangements have been made between buyer and seller prior to the sale. Transcon reserves the right to charge interest at a rate of 2% per month on overdue accounts. The right of property shall not pass until after settlement is made. Transcon Livestock Corp. reserves the right to require a certified cheque as settlement before releasing any sale cattle. Should any purchaser fail to settle for their purchase Transcon Livestock Corp. reserves full power to resell the animal to the best advantage either publicly or privately, without further notice. Any loss arising from such resale together with keep and all other expenses shall be payable by the defaulter. All settlements must be made with the clerks of the sale before any cattle will be released.

Transcon Livestock Corp and/or the Auctioneer shall have the right to refuse bids from anyone who has a previous record of default in payment or who has not made proper credit clearance prior to the sale with the owner or Sale Managers.

**BID** - No private sales will be allowed except as otherwise provided for in the terms and conditions. No by-bidding will be permitted.

**SALES TAXES** – Applicable sales taxes will be charged on semen, embryos, and trucking fees (if listed), respective to the home province of the buyer, not the seller.

**DISPUTES** - In cases of disputes, bidding will be reopened between the parties involved. If no further bid is made the buyer will be the person from whom the auctioneer accepted the last bid. The auctioneer's decision in such matters will be final.

**PURCHASER'S RISK** - Each animal becomes the risk of the purchaser as soon as sold. Animals will be cared for at the purchaser's risk for a reasonable length of time.

**INSURANCE** – Each animal becomes the risk of the purchaser at the time of sale and should be insured. Animals returning to the seller's farm must be insured.

**US BUYERS** – There is an additional charge (approximately \$300.00 US dollars) that will be applied to each animal purchased. This covers documentation, vet inspections/testing required to export. This cost does not include transportation or brokerage which is the responsibility of the buyer.

**CATTLE PICTURES AND INFORMATION PROVIDED** - The images in this catalogue are believed to be accurate representations of the individual animals and the information contained in this catalogue is provided by the seller and believed to be true and accurate. Transcon Livestock Corp. and catalogue designers/producers assume no responsibility if the images and/or information as received have been altered or is inaccurate.

**ANNOUNCEMENTS** – All announcements from the auction block will take precedence over the printed matter in the catalogue. Buyers are therefore cautioned to pay attention to any such announcements.

**CERTIFICATE OF REGISTRY** - A registration/recordation certificate issued by the applicable breed association and duly transferred will be furnished to the buyer of each animal after settlement has been made. It is the responsibility of the buyer to determine the acceptance of this certificate in any other association.

**SHIPPING** - Assistance will be given in making shipment after the sale but no risk is assumed by the Sales Management or Seller. Expenses incurred are the responsibility of the purchaser. Purchasers are requested to furnish shipping instructions when making settlement.

**BREEDERS GUARANTEE** - As per applicable Canadian Breed Association Breeding Guarantee guidelines. Copies are available at the sale settlement desk to be picked up by the buyer at any time. In no event shall the seller be responsible for reimbursing more than the purchase price. **EXCEPTION TO GUARANTEE** - In cases where the animal is subjected to any hormonal or surgical reproduction techniques after the sale, the guarantee shall be null and void.

**HEALTH** - It is the buyer's responsibility to determine health requirements for importing any animal into his province or state. Transcon Livestock Corp. assumes no responsibility for the health status of any animal in the sale.

**EMBRYO & SEMEN** – Full settlement must be made before release is done and shipping arrangements should be done within 30 days of the sale unless arrangements made between buyer and seller prior to the sale. Shipping arrangements and costs are the expense of the purchaser once release has been given.

**ACCIDENTS** - Although every precaution will be taken to protect the safety and comfort of buyers, neither the Sales Management, auctioneer, consignors, or Association assumes any responsibility in this matter and disclaims any liability legal or otherwise in the event of accident or loss of property.

**RIGHTS AND OBLIGATIONS** - The above terms and conditions of the sale shall constitute a contract between the buyer and the seller and be equally binding to both. Resale of animals following purchase in this sale shall constitute a separate transaction and the rights and obligations of the two parties connected thereto are not covered by the terms and conditions of this sale.

**TRANSCON LIVESTOCK CORP. IS AGENT ONLY** - It is to be clearly understood that Transcon Livestock Corp. is only acting as a medium between buyer and seller and is not in any way responsible for any failure on the part of either party to live up to his obligations. Neither does Transcon Livestock Corp. assume any financial obligations to collect or enforce collection of any monies between parties. Any legal action that may be taken, in exceptional cases, must be between buyer and seller.



Return:  
Transcon Livestock Corp  
Box 300  
Sundre, AB  
T0M 1X0



TRANSCON'S  
*Peace Country*  
SIMMENTAL BULL SALE

*1:00 pm MST · Friday, April 4, 2025*  
VJV Auctions - Beaverlodge, AB

